



Sue Adler

**KELLER WILLIAMS
PREMIER PROPERTIES**



Cell: (973) 975-0197
Office: (973) 376-0033 x 101
VIP@SueAdler.com
www.SueAdler.com/75Southern

8 Hillside Avenue

SUMMIT | NEW JERSEY

sueadler 
THE #1 KELLER WILLIAMS TEAM IN NEW JERSEY **team**

Each Keller Williams office is independently owned and operated.



With its charm, character and architecturally unique details this Summit home sets itself apart. Inside, a center hall foyer with gleaming hardwoods provides open entry to the adjoining rooms. Flowing floor plan with hardwoods under foot and an abundance of windows, with natural sunlight flowing through, add warmth and tranquility to the beauty of this exquisite home. The gourmet kitchen provides ample space and opportunity for family meals, while also serving as a perfect place for family and guests to gather alike. The breakfast area, open and inviting, provides access to a backyard deck, extending gathering space and providing ample opportunity for entertainment. Private sleeping quarters on the first level allow your overnight guests to relax. The master suite on the second level features its own gorgeous bath to rejuvenate in. Two additional bedrooms on the second level and three on the third provide ample privacy and comfort for your family and your guests to retire to. The location, space and setting of this home offer endless opportunities and possibilities.

THE FIRST LEVEL

- ◆ An entry vestibule with slider a guest closet
- ◆ The foyer features hardwood floors, a closet, a curved staircase under an arched entry leading to the upper level and open entry to the dining room, living room, kitchen and guest sleeping quarters
- ◆ A spacious living room features hardwood floors, crown molding and French doors to the family room.
- ◆ Hardwoods continue into the dining room, which features a built-in china cabinet
- ◆ The gourmet kitchen features a tile floor with decorative inlay, recessed lights, a tile backsplash, granite counters, maple cabinets, a pantry, a multi-level center island with granite countertop, breakfast area with doors leading to the backyard deck.
- ◆ A bright and spacious family room features hardwood floors, cathedral ceiling, recessed lights, palladium windows and a glass paned door to the backyard
- ◆ A guest bedroom features hardwood floors, two closets and a full en-suite bathroom.
- ◆ A hall bath features a tile floor, recessed lights, a vanity, a linen closet and tile shower stall



- ◆ A laundry room is conveniently located off the kitchen

THE SECOND LEVEL

- ◆ The second floor landing, with open access to the sleeping quarters, features a hardwood floor, crown molding, closet, window seats and a large and inviting sitting area
- ◆ The master bedroom features hardwood floors under an arched entry, ceiling fan, crown molding, closet with slider and a walk in closet with built-ins
- ◆ The master bath features a tile floor, recessed lights, a linen closet, tile wainscoting, tile shower stall, a tile spa and a double vanity
- ◆ A sitting room/study off the master features wall-to-wall carpet and a closet
- ◆ Bedroom 2 features wall-to-wall carpet, crown molding and closet
- ◆ Bedroom 3 features wall-to-wall carpet, crown molding and closet
- ◆ A hall bath features a tile floor, chair rail, shower/tub and vanity

THE THIRD LEVEL

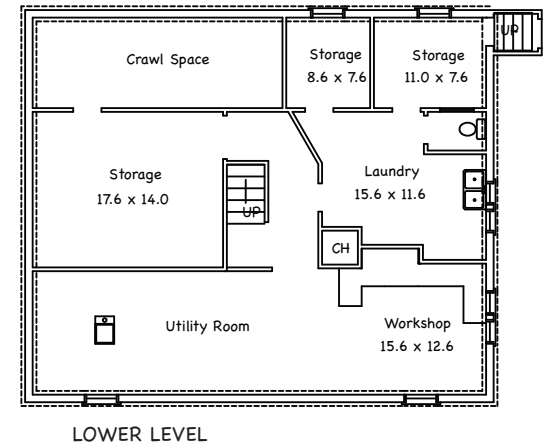
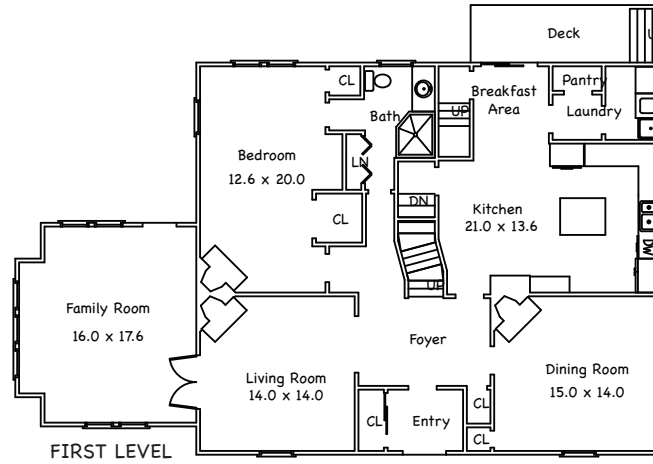
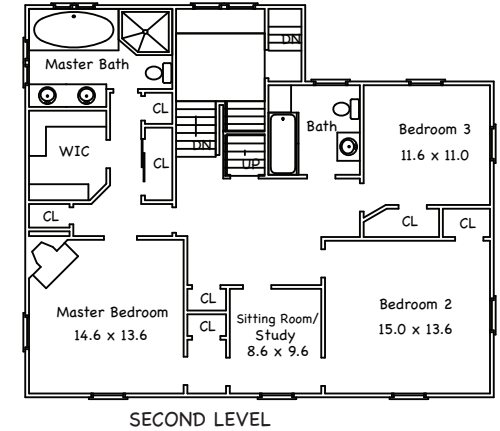
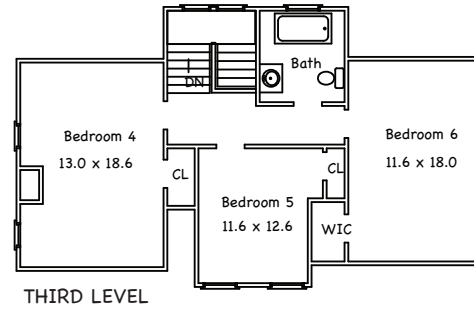
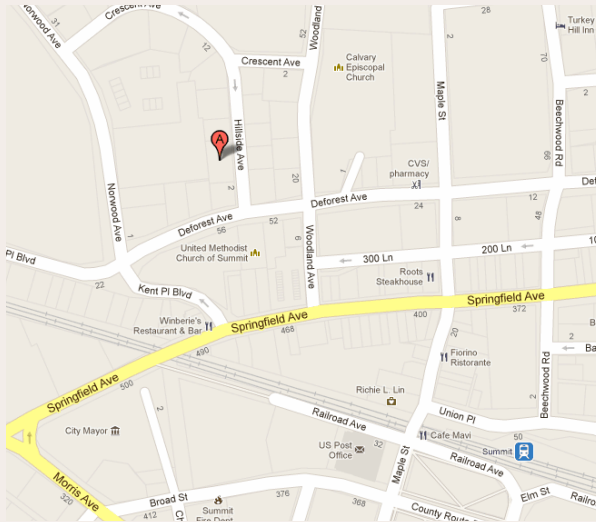
- ◆ Bedroom 4 features wall-to-wall carpet and a closet
- ◆ Bedroom 5 features a hardwood floor, cathedral ceiling, built-ins and a closet
- ◆ Bedroom 6 features wall-to-wall carpet and a walk-in closet

THE LOWER LEVEL

- ◆ Workshop with built-ins
- ◆ Laundry room with access to two storage closets
- ◆ Powder room off laundry room
- ◆ Unfinished storage room
- ◆ Mechanical/utility room
- ◆ Crawl space

ADDITIONAL FEATURES

- ◆ Stone and brick walls line front of property
- ◆ Stone walk-up
- ◆ Stone front porch
- ◆ Paver driveway
- ◆ Detached garage
- ◆ Deck
- ◆ The property has been professionally landscaped with mature trees, shrubbery, specimen plantings and established lawn.
- ◆ Easy access to major highways, business centers and Newark / Liberty International Airport



Summit is a thriving community with a bustling downtown featuring varied shops and restaurants. Its proximity and easy access to NYC via MidTown Direct commuter trains makes this one of New Jersey's most desirable places to live. In this fine home, you have the opportunity to take full advantage of all Summit has to offer in comfort and style.

Disclaimer: Information contained in this brochure is deemed reliable but not guaranteed and should be independently verified by the buyer(s). Keller Williams Realtors and agents acting on their behalf for the purpose of creating this brochure are not responsible for typographical errors, misprints or misrepresentations and are therefore held totally harmless. This listing is subject to price changes and/or withdrawal without prior notice.