



Sue Adler
KELLER WILLIAMS
PREMIER PROPERTIES



Cell: (973) 975-0197
Office: (973) 376-0033 x101
Sue@sueadler.com
www.SueAdler.com/132Ormont

132 Ormont Road

CHATAHM | NEW JERSEY

sueadler 
team



Move-In-Ready custom Chatham home, featuring three first floor bedrooms, with one on the lower level, and three full bathrooms. Appealing finishes throughout make this home hard not to like. Entering the home through the foyer, you finally get to see how large this home actually is. Stepping up into the living space you find a well proportioned living room and family room. Both of which are positioned perfectly to take advantage of the breathtaking views out the back. Off the living room is the formal dining room. This formal space adjoins to the sun room, both of which get full frontage to the magnificent view out the back windows.

The Kitchen is perfectly placed to be the center of the home. Totally remodeled, with granite counter tops, center island, black appliances, and a stainless steel Sub Zero refrigerator, this kitchen is perfectly set up for anything from a small family dinner to elegant dinner parties. With access to the side patio and back yard, the kitchen is sure to be a popular spot!





Walking down the hall on the main entrance floor you find three of the four bedrooms that this home has to offer. All three offer generous space, and ample closet room. The master bedroom with full master bath is the ultimate place to retire after a long day and enjoy the wonderful views of the rear yard. The full hall bath is perfectly placed for ultimate convenience and over night guests.

Heading downstairs, the views and great layout continue to flow. The lower level features a recreation room perfect to let your imagination run wild with. The lower level also features the fourth bedroom with large closet space, and a second family room with fireplace. The lower level family room takes full advantage of the spectacular views, with large windows, plenty of natural light and a stone laid fireplace. This space is a true bonus to the home.



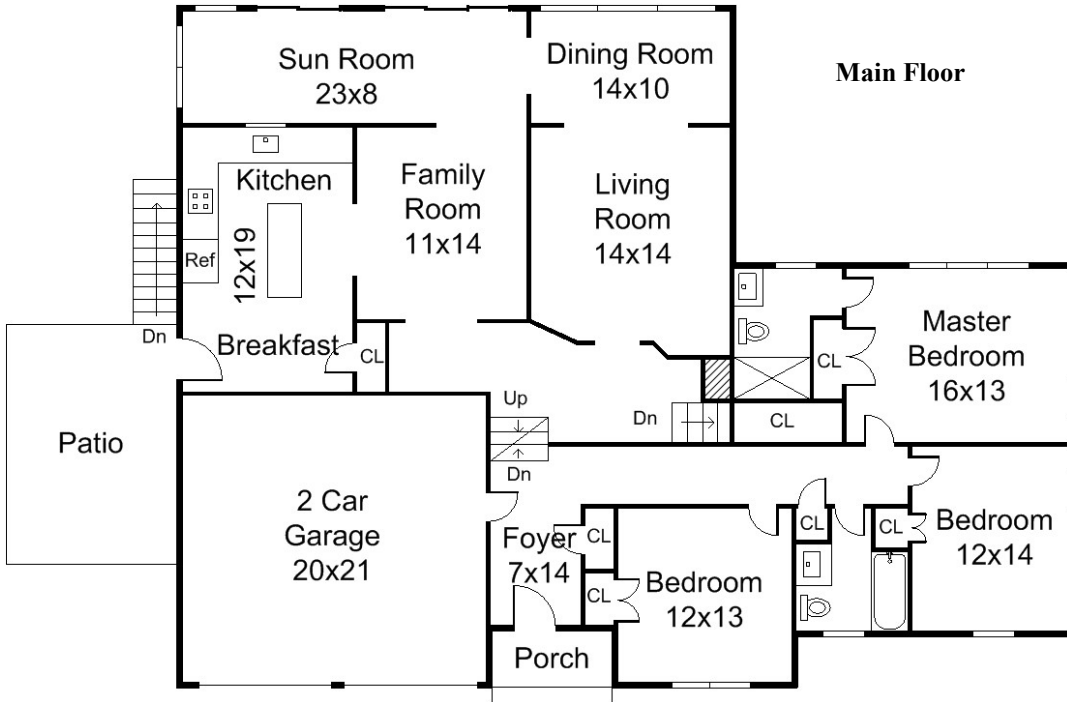
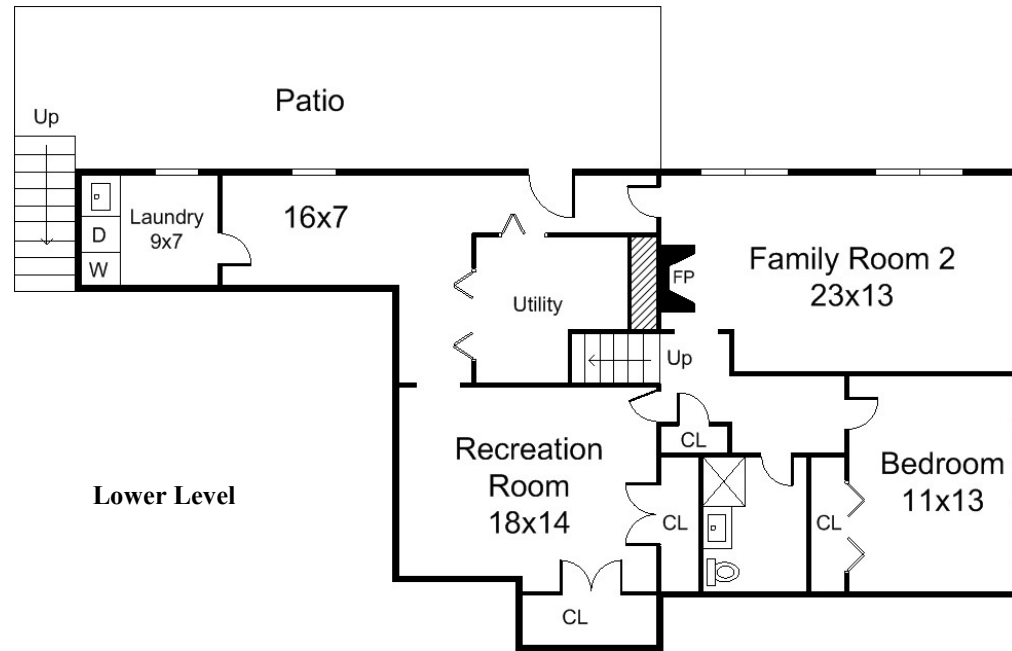
From the lower level you have access to the patio and back yard. The back yard has plenty of space for outdoor parties or just lazy summer days, enjoying all that this serene property has to offer.

132 Ormont Road in picturesque Chatham New Jersey showcases what Chatham living is all about. With great space indoors and out, tasteful upgrades and access to top rated schools, NYC transportation and downtown, 132 Ormont is the opportunity you have been waiting for!



Additional Features and Updates:

- New carpeting throughout the house
- Fresh Paint
- New Kitchen Hardware
- Master Closet renovated and remodeled
- New Washer and Dryer



Property Particulars:

Beds: 4
Baths: 3
Taxes for 2012: \$10,997
Lot Size: 100x200 (.45 acres)