



*Sue Adler*  
**KELLER WILLIAMS**  
PREMIER PROPERTIES



Cell: (973) 975-0197  
Office: (973) 376-0033 x101  
Sue@sueadler.com  
[www.SueAdler.com/53hickory](http://www.SueAdler.com/53hickory)

**53 Hickory Place**  
LIVINGSTON | NEW JERSEY

**sueadler**   
team

Each Keller Williams office is independently owned and operated.

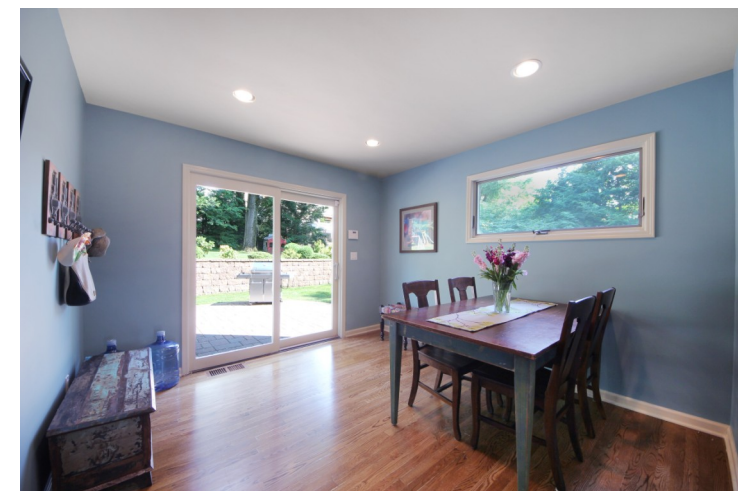




*Stunning classic Colonial with impeccable style both inside and out*

Picture perfect classic Colonial positioned perfectly to expose amazing lighting and views on quiet street only blocks from Burnett Hill Elementary school. Every inch of this home has been updated with high end finishes, custom details throughout and an open, flowing floor plan with plenty of room to entertain both inside and out.

The welcoming curb appeal and bluestone walkway guides you up to the front door and over the threshold into the entry foyer where your first glimpse of elegance comes into view. The Living Room is warm and cozy with a wood burning fireplace that peeks into the newly built adjacent office with large picture window and French doors. The Dining Room features crown molding, hand painted metallic ceiling and French doors out to the patio-truly an inviting setting for formal dinner parties. The reconfigured Family room with chair rail detail leads into the updated eat-in kitchen, combining custom design, sophistication and functionality into one space.







The Kitchen with Breakfast Room was designed with a breakfast bar, custom made cabinets and top of the line appliances and fixtures. The addition of the breakfast room overlooking the patio is perfect for more casual dining and the updated Powder Room just steps away completes the first level of this home.

The second level is home to four spacious bedrooms each with custom built closets. The Master Suite offers a romantic setting and has been updated with large walk-in closet with window for added natural light. The spa-like Master Bath with soaking tub, walk-in shower and custom built vanity is any couple's dream.



The finished lower level has a Recreation Room with recessed lighting and full bathroom for added convenience. And there's more...the rear yard is an entertainer's dream with the carefully designed patio, retaining wall, privacy fence and leveled top tier.

Nothing has been overlooked in this one-of-a-kind, turn-key home. Become part of a community with a blue ribbon school district, access to NYC, superb restaurants and first class shopping.



# Inside and Outside...

## FIRST LEVEL

- Entry foyer with hardwood floor, crown molding and coat closet
- Family room with hardwood floor, crown molding and chair rail detailing
- Powder room with marble basket weave tile floor and chair rail detailing
- Eat-in kitchen with breakfast bar, Madre Perla granite counters, tumbled stone backsplash, recessed lighting, professional grade appliances including Viking 4-burner oven with range and microwave, Liebherr refrigerator, dishwasher, under mount Kohler sink with garbage disposal
- Breakfast room with hardwood floors, sliding doors to rear patio and recessed lighting
- Dining room with hardwood floors, hand painted ceiling, recessed lighting and sliding doors out to rear patio
- Living room with hardwood floors, wood fireplace with slate hearth and wood mantle, crown molding and recessed lighting
- Office with hardwood floors, French doors, picture window, crown molding and recessed lighting
- Laundry room with hardwood floors, utility sink, extra storage with upper cabinets and shelving
- 2 car attached garage

## SECOND FLOOR

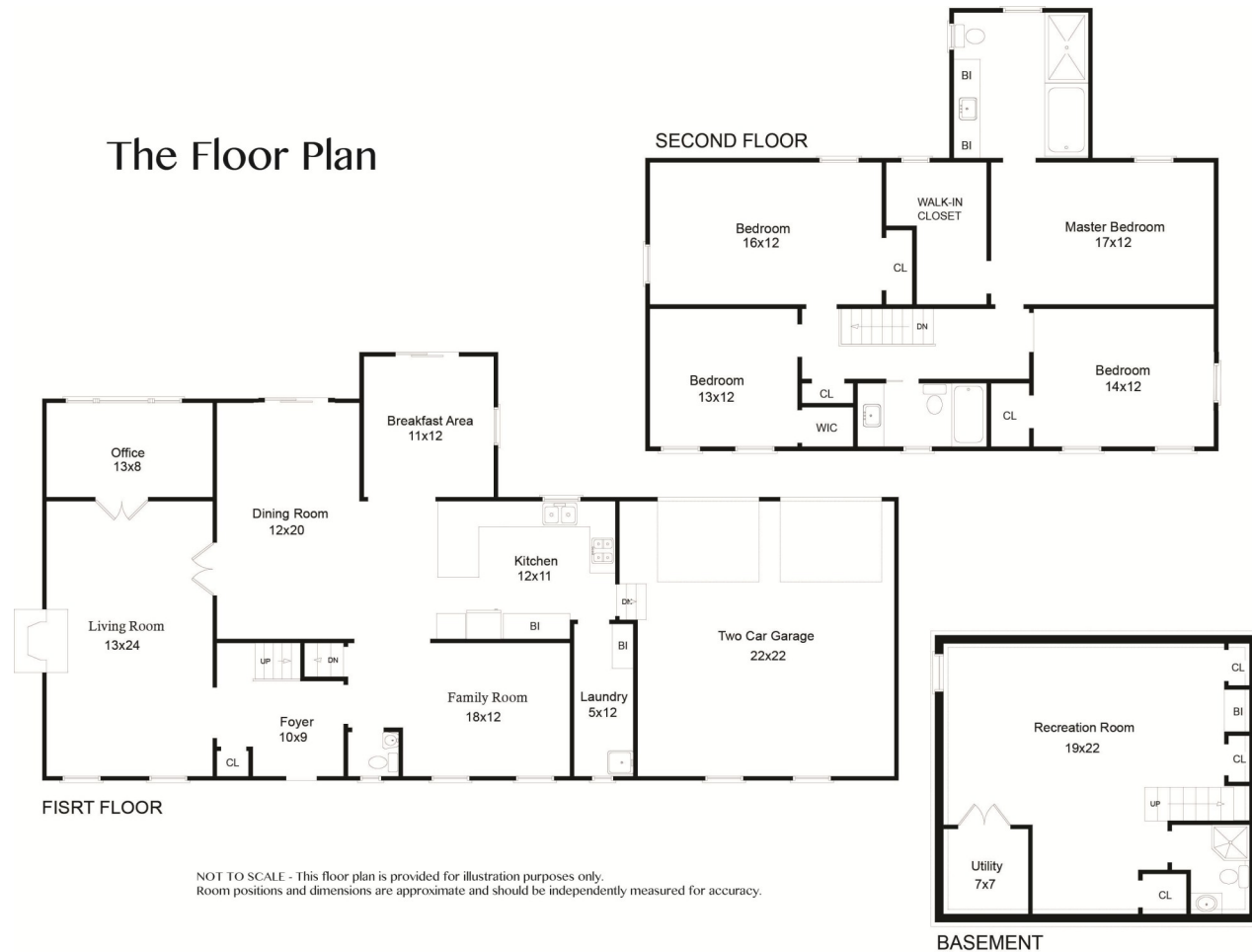
*(Hardwood floors under carpet throughout second level)*

- Master bedroom with new carpet, walk-in closet, crown molding and recessed lighting
- Master bathroom with tile floor, custom vanity, 2 built-in hampers and storage, Corian counter with Kohler sink and fixtures, tile and tumbled stone backsplash, soaking tub and walk-in shower with river rock floor and tile backsplash
- Bedroom with new carpet, picture ledge, closet with custom shelving
- Hall bathroom with marble basket weave tile floor, vanity with marble counter, subway tile with mosaic marble tile border backsplash, tub shower with custom shelf
- Bedroom with new carpet, walk-in closet with custom shelving
- Bedroom with new carpet, wainscoting and chair rail detailing, closet with custom shelving and recessed lighting
- Linen closet

## LOWER LEVEL

- Recreation room with carpet, custom built-in shelving, banquet seating and two closets, bathroom with tile floor and stall shower, utility room and crawl space for additional storage

## The Floor Plan



NOT TO SCALE - This floor plan is provided for illustration purposes only. Room positions and dimensions are approximate and should be independently measured for accuracy.

## ADDITIONAL FEATURES AND UPDATES

- New Kitchen
- Breakfast Room (addition)
- Dining Room
- Office (addition)
- Master Bedroom (addition of walk-in closet and Master Bathroom)
- Master Bathroom
- Powder Room
- Basement
- Freshly painted
- New carpeting throughout home
- New Roof
- New Siding
- New Patio and retaining wall
- Leveled top portion of rear yard
- Bluestone front walkway
- Newer windows (except front windows)
- Sprinkler System
- Security System
- New Privacy Fence