

18 Notch Hill Road

Livingston, New Jersey



Sue Adler
KELLER WILLIAMS
PREMIER PROPERTIES





Welcome to 18 Notch Hill Drive, set back on .92 private, park-like acres with mature landscaping. Located in the sought after Chestnut hill section this classic center hall colonial will leave you with lasting impressions.

Enter the home and into the two-story entry foyer where you catch your first glimpse of the open and airy floor plan and custom oak wood moldings and detailing seen throughout the home. White glazed terracotta tile floors lead you from the entry hall into the inviting living and dining rooms with large picture windows. With white washed oak crown molding and designer wallpaper, the dining room is a perfect place to entertain all your dinner guests in complete style. The light and bright, spacious living room features bay and palladium windows, ushering in plenty of natural sunlight and the adjacent family room with wood fireplace provides the perfect touch for entertainment, movies and relaxation. Steps away, the gourmet eat-in kitchen has all the amenities even the fussiest of chefs would appreciate. With granite counters, dining area, and plenty of storage, this kitchen is sure to impress. Enjoy dining al fresco on the deck or private three-season porch with stunning mahogany floors and cedar ceiling-a true highlight of this home, overlooking the tranquil property. Completing this level is a powder room, laundry room and access to the oversized two-car garage.

When the evening draws to a close everyone will find their own personal retreat in one of four bedrooms, including the master suite with large walk-in closet. With dramatic floor to ceiling French windows, cathedral ceiling and luxurious bathroom, the master suite is nothing short of perfection. Three additional bedrooms, a full bathroom and two large hall linen closets complete the second level.

The finished lower level is home to the recreation room , a bonus room, powder room and dedicated storage room.

Outside, the private and serene grounds can be enjoyed by all with flat yard space, perfect for all your outdoor hobbies and entertaining spaces on the rear deck and porch.

It is not often that a home of this quality comes along. With little to do except bring your furnishings and personal touch, this is a fabulous opportunity to enjoy all Livingston has to offer.

Inside and Out...

First Level

- Two-story entry foyer with white glazed terracotta floor, 7 inch whitewashed oak crown molding, decorative wall moldings, extra large coat closet
- Dining room with white glazed terracotta floor, 7 inch whitewashed oak crown molding, bay window and recessed lighting
- Living room with oak hardwood floor, bay window, west-facing palladium window and oak crown molding
- Family room with hardwood floor, wood fireplace with brick surround wall and hearth, built-ins and recessed lighting
- Eat-in kitchen with tile floor, granite counters, tumbled marble tile backsplash, 4 burner gas glass cook-top, double ovens, French sliding doors to deck
- Powder room with tile floor and custom vanity
- Laundry room with tile floor and cabinets for storage/pantry items
- Three-season screened-in porch with mahogany floor, cedar-planked ceiling and ceiling fan
- Coat closet (side entrance)
- Over-sized two car garage

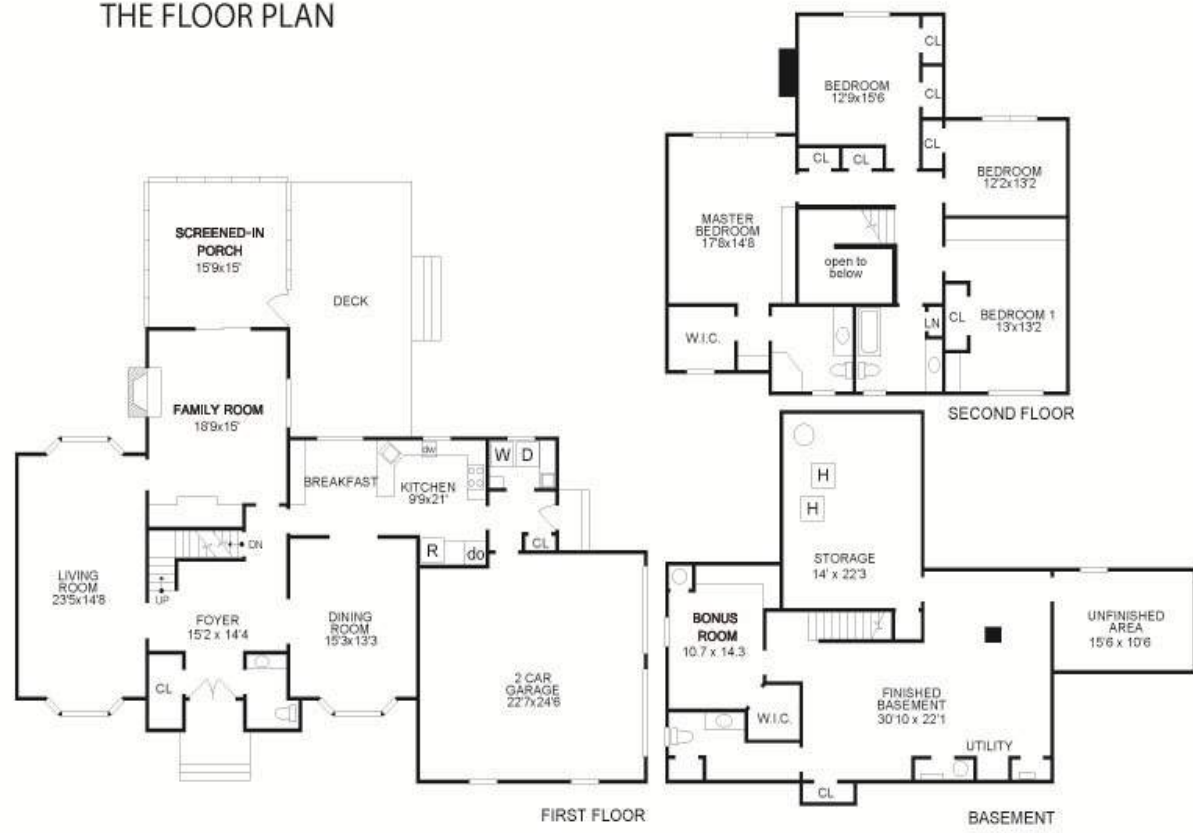
Second Level

- Bedroom with carpet, built-ins, closet with shelving, crown molding and recessed lighting
- Bedroom with carpet and closet with shelving
- Bathroom with tile floor, tile half wall and backsplash, custom maple vanity with marble counter, shower over tub and linen closet
- Bedroom with carpet, two closets with shelving and built-ins
- Master bedroom with carpet, floor to ceiling French windows, cathedral ceiling, crown molding, built-in armoire and two dressers, large walk-in closet with custom shelving and built-in linen closet
- Master bathroom with tile floor and half wall, frameless glass three-sided walk-in shower, custom Cherry vanity with marble counter

Lower Level

- Bonus room with carpet, built-in bookcases and walk-in closet with shelving
- Recreation room with carpet and closet
- Powder room with tile floor
- Storage room
- Utility and storage room

THE FLOOR PLAN



NOT TO SCALE - This floor plan is provided for illustration purposes only. Room positions and dimensions are approximate and should be independently measured for accuracy.

Additional Features and Updates

- Updated second floor bathrooms
- Screened-in porch
- New front walkway
- Reconfigured laundry room
- Stained deck
- Gas line
- Central vacuum
- Security/Fire system
- Professionally landscaped
- Re-graded front yard
- Underground lawn sprinkler system
- Water softener-rented
- New garage doors
- Over sized two car garage
- Two zone heat and A/C



Sue Adler
KELLER WILLIAMS
 PREMIER PROPERTIES

Cell: (973) 464-9129
 Office: (973) 376-0033 x101
 Sue@sueadler.com
 www.sueadler.com/18notchhill

