

# 68 Westview Road

Short Hills, New Jersey



*Sue Adler*  
**KELLER WILLIAMS**  
PREMIER PROPERTIES

**sueadler**   
THE #1 KELLER WILLIAMS TEAM IN NEW JERSEY team

Each Keller Williams office is independently owned and operated.





Step right in to this well-maintained home in the Deerfield section of Short Hills. Located on a quiet tree-lined street, minutes to both train stations direct to NYC, downtown shopping, recreation, and school. Every inch has been maintained by its current homeowners with care and their attention to detail is evident in every room, all while staying true to the charm and character of a classic home.

The warm and inviting center hall foyer leads you into the Living and Dining rooms, where you can easily entertain family and guests in complete comfort and style and the eat-in kitchen is just steps away. Kick back and relax in the family room, featuring wood fireplace, built-ins and access out to the rear paver patio. Completing this level is a powder room, laundry room and access to two car garage. The flexible floor plan of the first level provides you with endless opportunities for your growing family's needs.







When the evening draws to a close, everyone will find their own personal retreat in one of five bedrooms. The master bedroom with hardwood floor, skylight and two walk-in closets and private bathroom, is any couple's dream. The second level of this home provides an option of a second master suite or in-law suite. Three additional bedrooms with plenty of storage and hall bath aptly service these bedrooms.

The lower level is finished to include a large recreation room with space for indoor play and hobbies. This level also includes a powder room, utility/storage room and crawlspace-plenty of storage!

Outside the paver patio is waiting for your first spring BBQ and hosting all your outdoor activities on the graded yard.

This house has so many options to grow with your changing family, coupled with its sought after location, making 68 Westview Road an ideal place to call home.

# Inside and Out...

## THE FLOOR PLAN

### First Level

- Entry with hardwood floor, crown molding and two coat closets
- Living room with hardwood floor, crown molding, picture window and recessed lighting
- Dining room with hardwood floor with crown molding, chair rail detailing and access to the kitchen
- Kitchen with tile floor, center island with electric (moveable-on wheels), double ovens (top convection oven), 4 burner range, walk-in pantry, built-in work/desk area with light, separate dining area and access to rear patio
- Family room with hardwood floor, wood fireplace with brick surround and stone hearth, recessed lighting and glass sliding doors to patio
- Powder room with tile floor and pedestal sink
- Laundry room with closet and utility sink

### Second Level

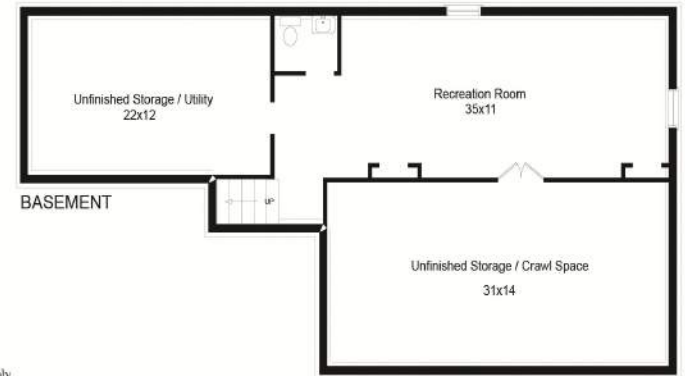
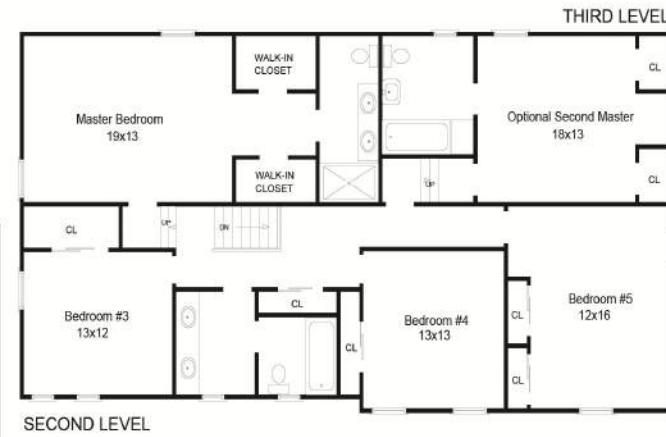
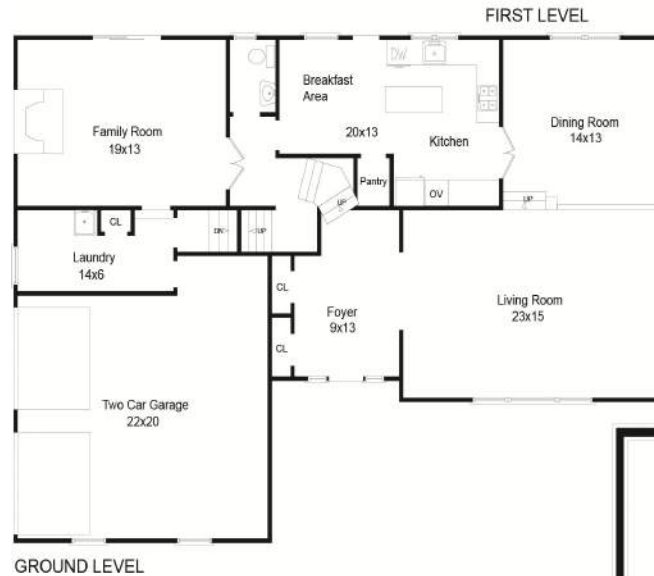
- Master bedroom with hardwood floor, skylight, two-walk-in closets (one with custom shelving), ceiling fan and recessed lighting
- Master bathroom with tile floor, vanity with double sinks and shower stall
- Bedroom with hardwood floor, closet (with custom shelving) and recessed lighting, ceiling fan
- Bedroom with hardwood floor, extra large closet (with custom shelving)
- Bedroom with hardwood floor, two closets with custom shelving, ceiling fan and recessed lighting
- 2<sup>nd</sup> Master Suite or Bedroom suite with hardwood floor, two closets (with custom shelving), ceiling fan and en-suite bathroom with tile floor and shower over tub
- Bathroom with tile floor, vanity with double sinks, shower over tub
- Extra large linen closet

### Lower Level

- Recreation room with carpet and recessed lighting
- Huge crawl space with storage
- Powder room with tile floor and pedestal sink
- Utility/Storage room with shelving



Cell: (973) 464-9129  
 Office: (973) 376-0033 x101  
 Sue@sueadler.com  
 www.sueadler.com/68westview



NOT TO SCALE - This floor plan is provided for illustration purposes only. Room positions and dimensions are approximate and should be independently measured for accuracy.

### Additional Features

- New roof (2013)
- New gutters (2013)
- New garage doors (2013)
- New driveway (2013)
- New hot water heater (2013)
- New drains from leaders (2012)
- New furnace humidifier (2012)
- New furnace (2007)
- Patio (2012)
- Retaining wall (2010)
- Refrigerator, oven, range top, dishwasher, microwave (2010)
- Washer/dryer (2009)
- Central A/C (2007)
- Full size attic
- Full house fan
- Attic fan

