

# 15 Northfield Court

Livingston, New Jersey



*Sue Adler*  
**KELLER WILLIAMS**  
PREMIER PROPERTIES

**sueadler**   
THE #1 KELLER WILLIAMS TEAM IN NEW JERSEY team



Positioned to take full advantage of all Livingston has to offer, a short distance to all schools, downtown and one block to bus stop to NYC, you will feel right at home in this charming home, situated on a quiet cul-de-sac, tree-lined street in the desirable "Collins" section.

Step right into the warm and inviting Living room with hardwood floors. The adjacent sun-filled family room is perfect for relaxing after a long day of work or curling up and reading your favorite book. The dining room is ready to host your next dinner party in complete comfort and style, and just steps away is the updated eat-in kitchen featuring tile backsplash, breakfast bar and stainless steel appliances. Also on this level is a private office or fourth bedroom.

When the evening comes to a close, everyone will find their own personal retreat in one of four bedrooms, all featuring hardwood floors. Conveniently located down the hall is an updated full bathroom with tile floor and shower over tub. The spacious master bedroom is complete with plenty of closet space and a full bathroom with stall shower.

And there's more...the walk-out lower level has a recreation room with decorative fireplace, storage and laundry area.

Loving care and thoughtful updates have kept this fine home fresh and modern. Outside, the backyard is private and spacious and provides endless opportunities for outdoor play. This move-in ready home brings generous interior spaces, a prime location and pretty setting together in one fabulous package.



## THE FIRST LEVEL

- ◆ Entry hall with coat closet
- ◆ Living room with hardwood floor and picture window
- ◆ Family room with hardwood floor and crown molding
- ◆ Dining room with hardwood floor
- ◆ Bedroom/Office with hardwood floor, closet and recessed lighting
- ◆ Kitchen with granite counters, center island and breakfast bar, tile backsplash, stainless steel appliances including-4 burner gas range, dishwasher, refrigerator, garbage disposal, pantry and recessed lighting
- ◆ Bathroom with tile floor, custom vanity with shelving, shower over tub and laundry chute
- ◆ Master bedroom with hardwood floor and closet with custom shelving
- ◆ Master bathroom with tile floor, stall shower and laundry chute
- ◆ Bedroom/Office with hardwood floor, closet and recessed lighting
- ◆ Bedroom with hardwood floor and closet
- ◆ Bedroom with hardwood floor and closet
- ◆ Linen closet

## THE LOWER LEVEL

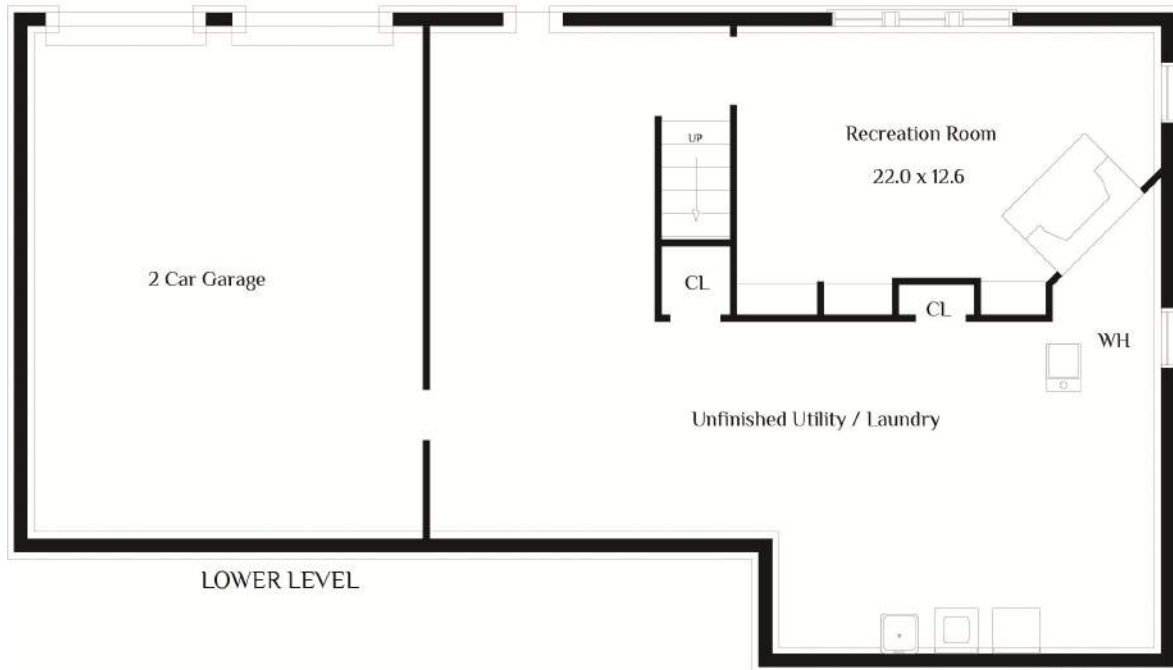
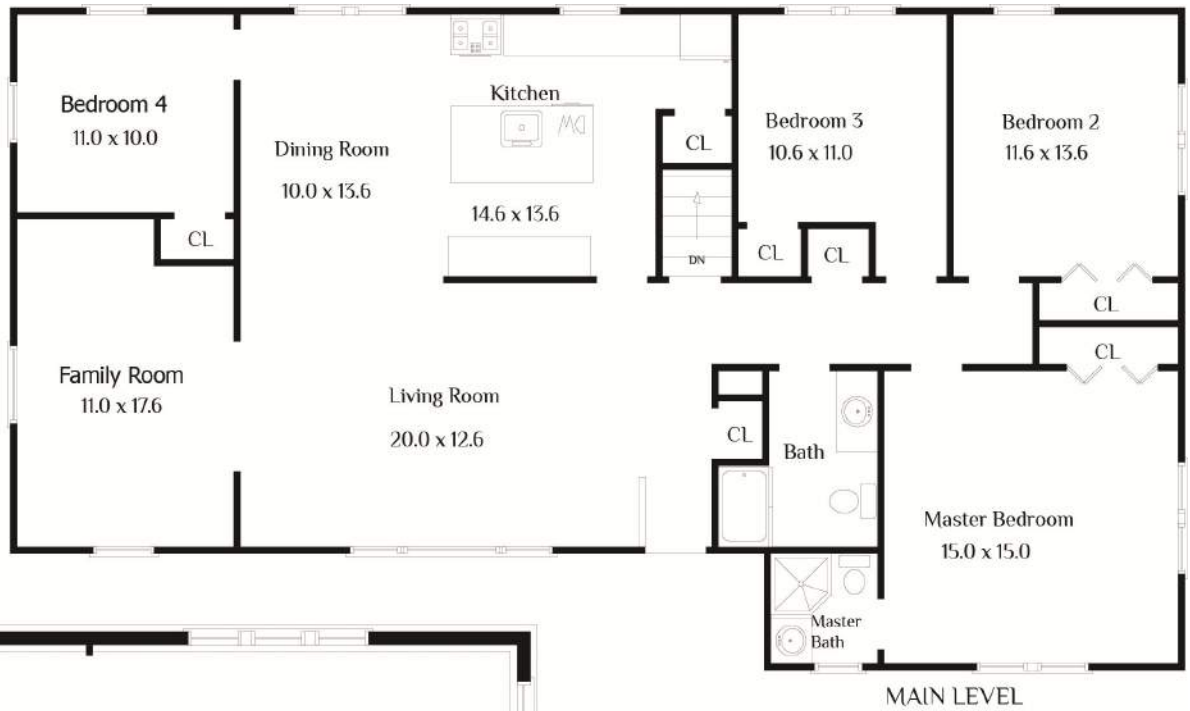
- ◆ Recreation room with laminate floor, built-ins and wood fireplace with brick surround
- ◆ Storage/Utility Room
- ◆ 2 car garage

## ADDITIONAL FEATURES

- ◆ Updated hall bathroom (2014)
- ◆ Driveway repaved (2013)
- ◆ Security system
- ◆ Laundry chutes



# THE FLOOR PLAN



NOT TO SCALE - This floor plan is provided for illustration purposes only. Room positions and dimensions are approximate and should be independently measured for accuracy.



*Sue Adler*  
**KELLER WILLIAMS**  
 PREMIER PROPERTIES

Cell: (973) 464-9129  
 Office: (973) 376-0033 x101  
 Sue@sueadler.com  
 www.sueadler.com/15northfield

