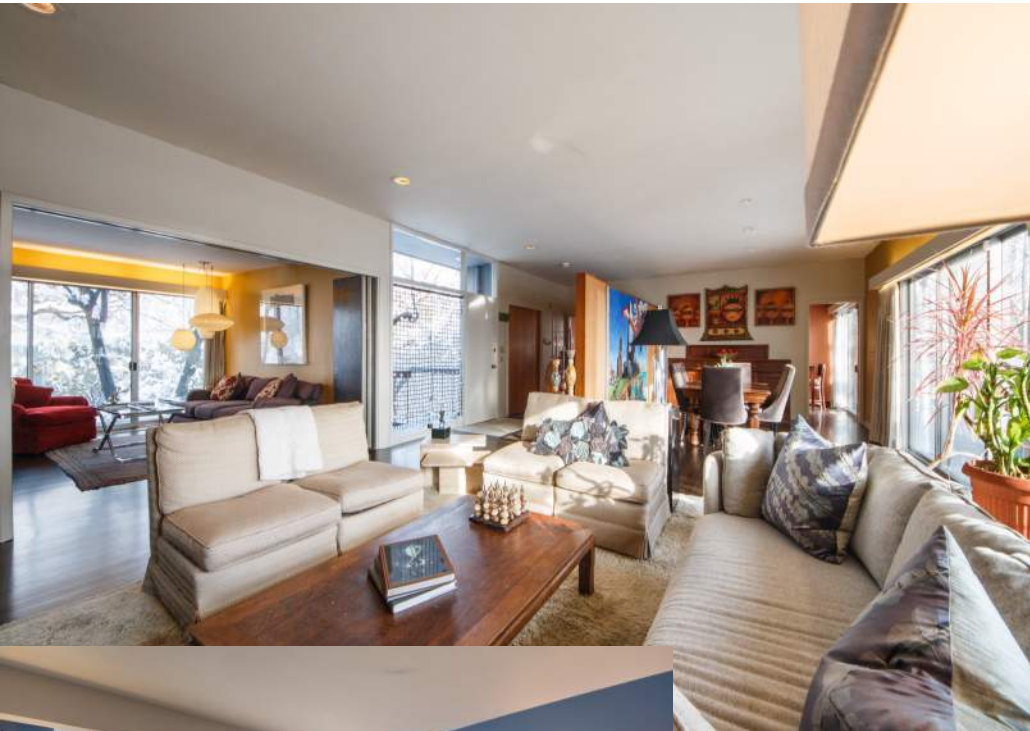


6 Farview Road

Millburn, New Jersey

Sue Adler
KELLER WILLIAMS
PREMIER PROPERTIES





Described as a house for all seasons, architect Milton Klein makes extensive use of glass walls and outdoor living areas. Featured in *House Beautiful*-Building Manual Magazine 1964-65. In this rare mid-century modern ranch, spacious rooms flow effortlessly along polished hardwood floors with artful displays at every turn. Positioned perfectly in walking distance to midtown direct train and downtown Millburn, you look out over neighboring roofs and treetops with breath taking sunsets, manicured lawns and a tranquil courtyard with waterfall, and enclosed garden. This home will surely impress.

As you enter the home into the foyer, the inviting open spaces and wall of glass sliders are on prominent display. The eat-in kitchen features Italian tile with warm earth-toned limestone counters, top of the line appliances and French sliding doors out to the rear deck that runs the entire length of the home.

Flowing right in from the Kitchen, the Dining and Living rooms are at the heart of this home, perfect to entertain a party of any size and with wide-sweeping views of the property-it's sure to be a popular spot. The Family room features a fireplace, wet bar and sliding door out to the private courtyard with waterfall feature and pond.

When it's time to relax after a long day, everyone will find their own personal retreat in one of 4 bedrooms. The Master bedroom is conveniently located on the first level with plenty of closet space, glass sliders out to the deck and with its own private bath with skylight you'll enjoy retiring here after a long day of work.

The two story section at the rear of the house utilizes the slope for privacy and for architectural interests. The walk-out lower level is finished and features 3 bedrooms and 2 full bathrooms. There is also a recreation room, laundry room with storage and dedicated storage room with workshop.

Outside, the lower level features a bluestone patio and the yard is ready for your toboggan or sled. The two-car garage with extra storage space is positioned with easy access to the kitchen.

Enjoy all this home has to offer in complete comfort and style in a desirable community with a thriving downtown and top rated school system. Quiet tree-lined streets come together in a charming neighborhood populated with a variety of distinctive homes.

Inside and Out

The First Level

- Entry foyer with coat closet
- Living room with hardwood floors, custom built-ins and recessed lighting
- Dining room with hardwood floors
- Kitchen with dining area, Italian tile floor, limestone counter and tile backsplash, double ovens, 5-burner gas range, sliding door to deck and access to garage, Pocket doors separating the dining room and kitchen, recessed counter space under the oven
- Family room with hardwood floors, brick focal wall, fireplace, wet bar and sliding door out to courtyard
- Powder room with Italian tile floor, limestone counter and skylight
- Master bedroom with carpet and two closets
- Master bathroom with tile floor, custom built-in closets (plenty of storage), marble vanity counter top, stall shower and tub, opening skylight

Lower Level

- Bedroom with carpet and closet
- Bedroom with carpet, closet and custom built-in
- Bedroom with carpet and closet-access to rear patio
- Bathroom with tile floor, pedestal sink and shower over tub
- Recreation room with carpet and recessed lighting
- Laundry room plus additional storage/utility room
- Bathroom with tile floor and stall shower
- Storage room plus additional workshop
- Hall gallery with custom built-in

Additional Features and Updates

- Refinished hardwood floors (2013)
- New Hot Water Heater (2012)
- Updated Kitchen and entry with Italian tile floor (2010/2011)
- New lower level bathroom (2009)
- New carpeting in Master bedroom
- 2-zone A/C and heat and humidifier (except for one lower level bedroom)
- Professionally landscaped
- Courtyard with waterfall feature
- Central station security system with fire



Sue Adler
KELLER WILLIAMS
PREMIER PROPERTIES

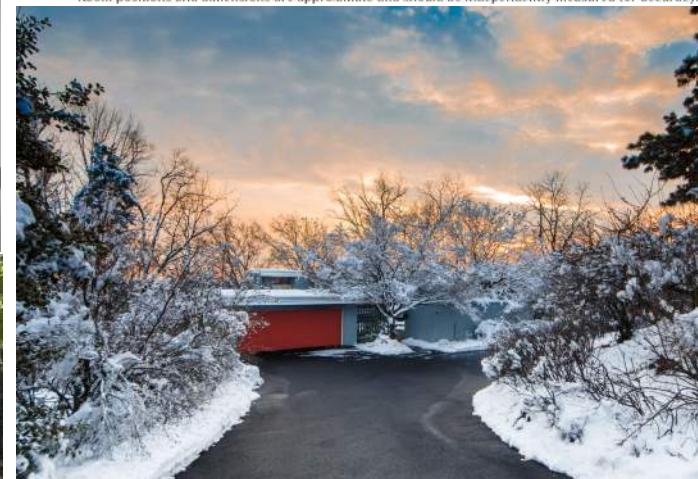
Cell: (973) 975-0197
Office: (973) 376-0033 x101
Sue@sueadler.com
www.sueadler.com/6farview



THE FLOOR PLAN



NOT TO SCALE - This floor plan is provided for illustration purposes only.
Room positions and dimensions are approximate and should be independently measured for accuracy.



sueadler 
THE #1 KELLER WILLIAMS TEAM IN NEW JERSEY team