

14 Pine Terrace East

Short Hills, New Jersey



Sue Adler
KELLER WILLIAMS
PREMIER PROPERTIES

sueadler 
THE #1 KELLER WILLIAMS TEAM IN NEW JERSEY **team**

Each Keller Williams office is independently owned and operated.



A short drive through the tree lined streets of the Glenwood section of Short Hills will bring you to 14 Pine Terrace East. Here you'll find a beautiful and meticulously maintained "Old Short Hills" style colonial boasting the ultimate in historic charm combined with numerous upgrades.

The bluestone walkway guides you to the front door and into the Entry Hallway where you will get your first glimpse of all that the home has to offer. Warm toned hardwood floors, decorative paneled wainscoting and a classic center staircase provide the backdrop for all your living and entertaining options. Proceed through the broad archway into the gracious Living Room where the large gas fireplace serves as the focal point of the room adorned with built-in bookcases and shelving on either side...the room is just perfect for either an intimate gathering or larger holiday celebration. Guests will flow easily into the adjacent Sun Room where light streams in on three sides and another gas fireplace warms you on cool evenings. French doors lead you into the inviting Family Room where the natural light is breathtaking thanks to large windows and French doors that lead out to the mahogany deck, brick patio and lawn right outside. Picture yourself outdoors with multiple tables and chairs, appetizing smells coming from the barbecue and perennials blossoming at every turn...it's a personal retreat as well as an enticing spot for outdoor entertaining.

Proceed on into the gourmet Kitchen where preparing meals is a pleasure with top of the line appliances and custom cabinetry complete with plenty of pantry space. Sit down in the Breakfast Room for a quick snack overlooking the lush greenery outside or continue on through the conveniently located Home Office, complete with built-in desk and charming bay window, to the Dining Room where family and friends can relax while enjoying a more formal meal. A conveniently located Powder Room, access to the lower level and a rear staircase to the Master Bedroom complete the first level living space.



When it's time to retire for the night, the second level awaits with 4 bedrooms and 2 full baths to assure everyone's complete comfort. The Master Suite includes a spacious Bedroom with rich hardwood floors, plenty of closet space, access to the rear staircase and an En Suite Bath with elegant marble shower and built-in storage. A bright and airy Recreation Room is accessible from 2 of the generously sized bedrooms and an additional bedroom with French doors and hardwood floors provides numerous options for alternate use. But that's not all...2 additional bedrooms, a large Play Room with built-in bookcases and storage as well as another Full Bath on the 3rd level provide private living quarters for family and guests.

And there's more....the open lower level offers space for use as a Home Gym or Recreation Room, a Dark Room with utility sink for photography enthusiasts, plenty of storage closets, a fully equipped Laundry Area and access to the backyard.

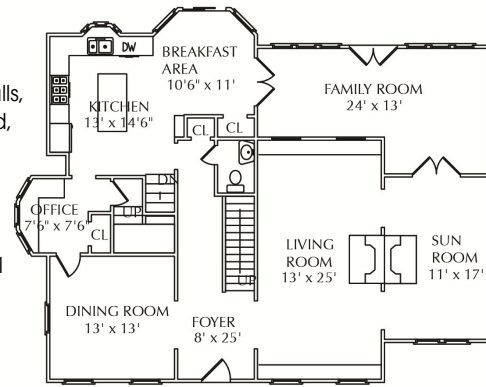
In a sought after location within easy walking distance of schools and NJ Transit Midtown Express to NYC, access to top schools and a wonderful Millburn Downtown, 14 Pine Terrace East is the perfect places to call home.

Inside and Out...

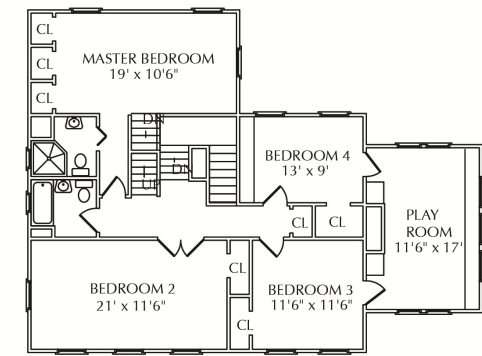
First Level

- Entry Foyer with hardwood floors, wainscoting, custom made wood plank door with sidelights, 2 coat closets (one with built-in shelves) fixture crown moldings and view of fireplace
- Living Room with hardwood floors, crown moldings, recessed lights, large windows with Duet shades and archway to Dining Room
- Dining Room featuring crown moldings, hardwood floors, textured faux painted walls, large gas fireplace with custom made stone mantel and decorative stone surround, French doors to Trex deck
- Powder Room with chair rail and picture moldings, pedestal sink, stone tile floor, oil rubbed bronze hardware and decorative mirror
- Kitchen with custom French country cabinets with granite countertop, stainless appliances including Thermador Professional Series range/oven with six burners, grill and convection oven, Thermador 48" refrigerator/freezer, granite topped center island and breakfast bar with built-in GE microwave and under counter cabinets, large walk-in pantry with shelving and cabinets, open access to Family Room and Office
- Family Room features, decorative wall moldings, travertine tile floor with mosaic inlaid border, raised ceiling with decorative moldings and center fixture medallion, large windowed wall and paned glass sliders to deck and patio, and archway to Sun Room
- Sun Room with marble tile floor, crown moldings, iron fixture with crystal accents and French doors to deck
- Laundry Room with ceramic tile floor, washer/dryer, utility sink and access to garage
- Office with custom wood built-ins including large desk/work space, and full wall of cabinets and shelves, hardwood floors, chair rail and crown molding, and Duet shades

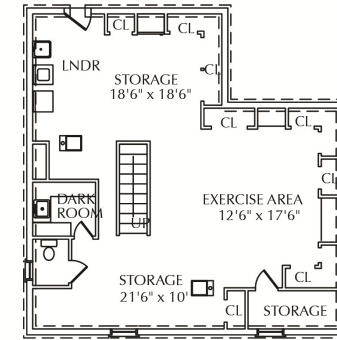
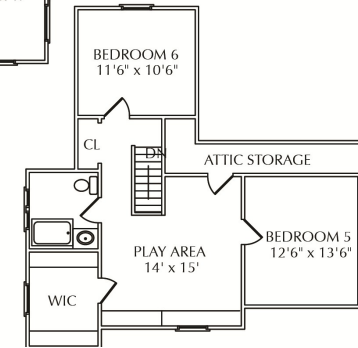
THE FLOOR PLAN



FIRST FLOOR



SECOND FLOOR



LOWER LEVEL

NOT TO SCALE - This floor plan is provided for illustration purposes only. Room positions and dimensions are approximate and should be independently measured for accuracy.

Second Level

- Gallery Landing with hardwood floors, linen closet with shelves and drawers and stairway access to Third Level
- Bedroom #1 with walk-in closet with shelving, built-in bookcase, crown moldings, carpet, ceiling fan, window blinds and bi-fold door entry to Recreation Room
- Recreation Room with windows on 3 sides, built-ins with shelves and cabinets, ceiling fan and second set of bi-fold doors to Bedroom #2
- Bedroom #2 with crown moldings, carpet, ceiling fan, window blinds and bedside sconce
- Bedroom #3 with French doors, hardwood floors, closet, recessed lights, 4 large windows with blinds, chair rail, crown moldings currently used as a home theater
- Hall Bath with marble floor and walls, whirlpool tub with shower, mirrored wall, medicine cabinet, towel closet, pedestal sink and recessed lights
- Master Bedroom Suite with hardwood floors, crown moldings, bedside sconces, window blinds, 3 custom built closets (one with built-in drawers) windows overlooking backyard, staircase to first level office and En Suite Bathroom featuring marble floor, walls and walk-in stall shower with glass doors, heat lamp, pedestal sink, cabinets with shelves, fixture and mirrored wall

Third Level

- Bedroom #5 with hardwood floors, arched ceiling, ceiling fan and access to large hallway closet
- Play Room with hardwood floors, built-in bookcases/toy storage, large storage closet and access to attic
- Bedroom #6 with hardwood floors, paneled window seat, arched ceiling and built-in bookcase
- Full Bath with shower over claw foot tub, pedestal sink, ceramic tile floor and fixtures

Lower Level

- Gym/Recreation Room with 6 storage closets and separate storage room and private area with toilet
- Dark Room with utility sink
- Utility Area
- Laundry Area with washer/dryer, utility sink, broom closet, second refrigerator/freezer
- Access to back yard

Additional Features and Updates

- 1-Car detached garage with electricity
- Professionally landscaped and maintained property with underground sprinkler system
- Family Room addition (2010)
- Multi-zone gas heat
- Multi-zone central air (installed 2001)
- Fire, security and low temperature alarm systems
- Direct gas line to patio
- Water purifier
- Water Softener
- New Roof (2009)
- 2 New Chimneys (2003)
- Gas chimney relined (2008)
- New dishwasher and microwave (2008)
- New hot water heater (2014)
- 3rd floor windows replaced (2010)
- Exterior painting (2007)
- Driveway resurfaced (2011)



Cell: (973) 975-0197
Office: (973) 376-0033 x101
Sue@sueadler.com
www.sueadler.com/14PineTerrEast