

7 Woodmere Drive

Summit, New Jersey



Sue Adler
KELLER WILLIAMS
PREMIER PROPERTIES

sueadler 
THE #1 KELLER WILLIAMS TEAM IN NEW JERSEY team

Each Keller Williams office is independently owned and operated.





Welcome to 7 Woodmere Drive, an elegant move-in ready colonial situated on more than half an acre of exquisite, park like property in the desirable Northside section of Summit. The picturesque setting of this home boasting private access to Mallard Pond is a must see.

Inside, the Entry Foyer serves as your introduction to this gracious home with warm hardwood floors, a grand center staircase and archways leading to adjoining rooms. An easy flowing floor plan and rich tasteful embellishments are seen throughout the home beginning with the generous Living Room that beckons with its grand scale and impressive fireplace...a perfect setting for intimate gatherings or grand festivities alike. Peer through the elegant French doors into the Sun Room overlooking the magnificent grounds as you continue on into the expansive and open Family Room and Kitchen area. Here you may choose to gaze through a full windowed wall out upon the backyard greenery, cozy up in front of the gas fireplace flanked by rich looking custom cabinetry and bookshelves or head into the chef's dream Kitchen to whip up a quick snack or a gourmet creation. Custom French country style cabinetry is finished to perfection with exquisite Carrera marble and the finest in stainless steel appliances. Enjoy the convenience of the open Breakfast Room featuring a built in corner banquette, the built-in marble topped desk and the Butlers Pantry that services the adjacent elegant Dining Room. A rear wing with a conveniently located Powder Room, a Mudroom with backyard and lower level access, a Laundry Room and an additional walk-in pantry complete the first level living space.

Five bedrooms and four baths located on the second level assure everyone's complete comfort. The Master Suite awaits with amenities including walk-in closets, a well-appointed dressing area and luxurious Master Bath. Relax in the soaking tub while enjoying the outdoor views or let the spa jets in the marble walk-in shower rejuvenate you. Four generously sized additional bedrooms with plenty of closet space (2 with en suite baths) and a full Hall Bath provide plenty of options for family and guests, while a conveniently located washer and dryer, linen closet and access to attic storage assure all your needs are met.

And there's more...casual spaces are found on the finished lower level where a large Recreation Room with fully outfitted built-in bar and impressive stone fireplace, an Exercise Room and three additional unfinished storage rooms assure plenty of space for leisure time hobbies and entertaining. Outside, you're sure to enjoy the enormous brick paver patio when it's set with multiple tables and lounge chairs, the inviting in ground pool and pool house and the breathtaking lawns abutting the serenity of Mallard Pond.

Custom details combined with the ultimate in modern amenities and a magnificent setting make 7 Woodmere Drive a truly special property. With downtown shopping, recreation, top rated schools and NYC commuter trains nearby, this central location invites you to take full advantage of all Summit has to offer.



Inside and Out...

First Level

- Entry Foyer with hardwood floors, grand center staircase, 2 large coat closets, light fixture and archways to Living Room and Dining Room
- Living Room features deep crown moldings, hardwood floors, large fireplace with wood mantel, granite surround and slate hearth with built-in mirror above, 2 sets of French doors to Sunroom and heated Greenhouse, large window facing front yard, French doors to Family Room and Kitchen
- Sun Room with decorative window cornices, hardwood floors, windows on 3 sides and door to yard
- Dining Room with hardwood floors, chandelier, 2 decorative corner display/storage units, crown moldings, large windowed wall and swinging door to Kitchen Butler's Pantry with custom cabinetry, granite countertop and marble backsplash
- Kitchen features custom cabinetry with granite topped center island/breakfast bar, marble backsplash, farmhouse sink, pendant light over island, recessed lighting, high-end stainless appliances including JADE 6 burner range, Dacor wall oven, microwave and warmer, dishwasher with matching cabinetry panel, Sub-Zero refrigerator/freezer with matching cabinetry panel, additional dishwasher, built-in display nook/spice rack, desk/work area with granite top and custom cabinetry and walk-in pantry with shelves
- Breakfast Room with recessed lights, pendant fixture, built-in corner banquette
- Family Room features 4 built-in bookcases/storage units flanking large windowed wall overlooking brick paver patio and walkway to pool, gas fireplace with wood mantel and granite surround with nook for flat screen TV above, French Doors to patio
- Powder Room with crown molding, black/white marble tile floor, pedestal sink and 2 sconces
- Laundry Room with marble tile floor, utility sink, shelving and light fixture
- Mudroom with recessed lighting, 2nd pantry room with shelves, access to Dog Run

Second Level

- Gallery Landing with hardwood floors
- Master Bedroom with hardwood floors, recessed lighting, large windows and door to open porch, dressing area with custom built-ins with marble top, walk-in closet with pocket door and custom shelving, doorway to en suite bath
- Master Bathroom with marble topped double sink vanity with decorative backsplash, free standing soaking tub below window with decorative mullions, marble tile floor with inlaid border, separate commode with window and fixture, stall shower with built-in seat, steam shower and spa jets, 3 sconces, recessed lights, high ceilings and blinds
- Bedroom #2 with hardwood floors, recessed lights, crown moldings, closet and windows with blinds
- Bedroom #3 with hardwood floors, 2 closets with built-in shelving, bay window with blinds, recessed lights and En Suite Bath featuring stone top vanity, 2 sconces, tile stall shower, heat lamp and window blinds
- Bedroom #4 with tray ceiling, recessed lights, hardwood floors, large double closet with built-ins and automatic light, 2 large windows
- Bedroom #5 with dormer ceiling, recessed lights hardwood floors, closet, window overlooking backyard and En Suite Bath featuring marble tile, shower over tub with marble tile wall, Corian top vanity with cabinets below, 2 sconces and heat lamp
- Hall Bath featuring large granite topped vanity with inlaid sink, tile walls with mirror, tiled shower over tub with glass door
- Rear Hallway includes linen closet, access to unfinished attic storage, nook with washer and dryer

Lower Level

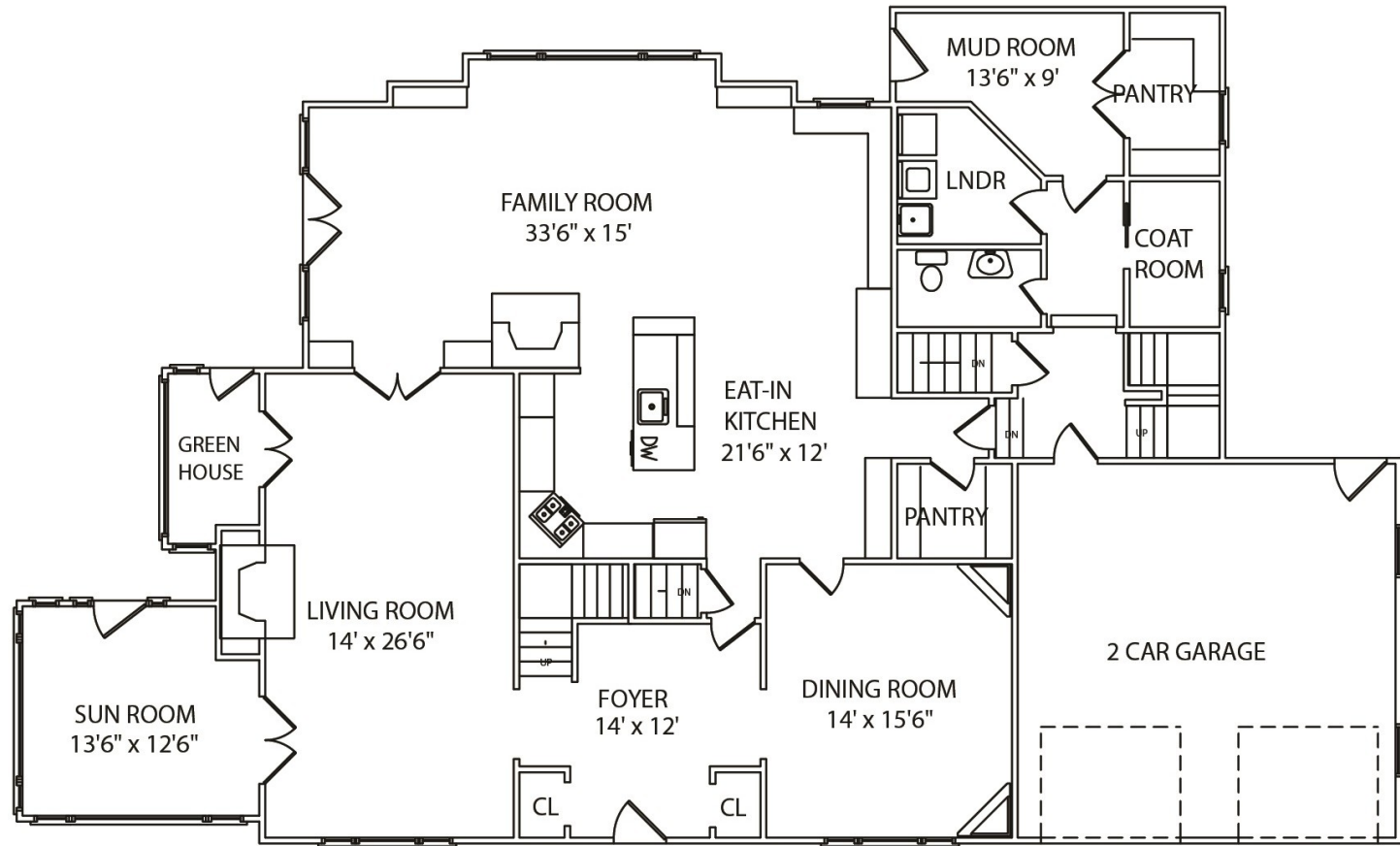
- Recreation Room with wide plank wood laminate floors, recessed lights, paneled wall, large stone fireplace with wood mantel, decorative wood beam detail and 2 sconces
- Full Wet Bar with beer taps, ice storage bin, glass tile counter and shelving with mirror, built-in foot rail
- Exercise Room with wood laminate floor
- Utility Room
- 2 unfinished Storage Rooms

Additional Features and Updates

- Beautiful setting overlooking Mallard Pond
- Complete home renovation (2005)
- Brick and Hardiplank patio (updated 2013)
- New Kitchen backsplash (2015)
- Underground sprinkler
- Storage Shed
- Heated in ground pool
- Pool house with Bathroom and Kitchenette
- New whole house back-up generator (2014)
- Fenced in dog run
- 3 Zone Heat/AC with radiant heat
- Built in speakers throughout 1st level



THE FLOOR PLAN



FIRST FLOOR

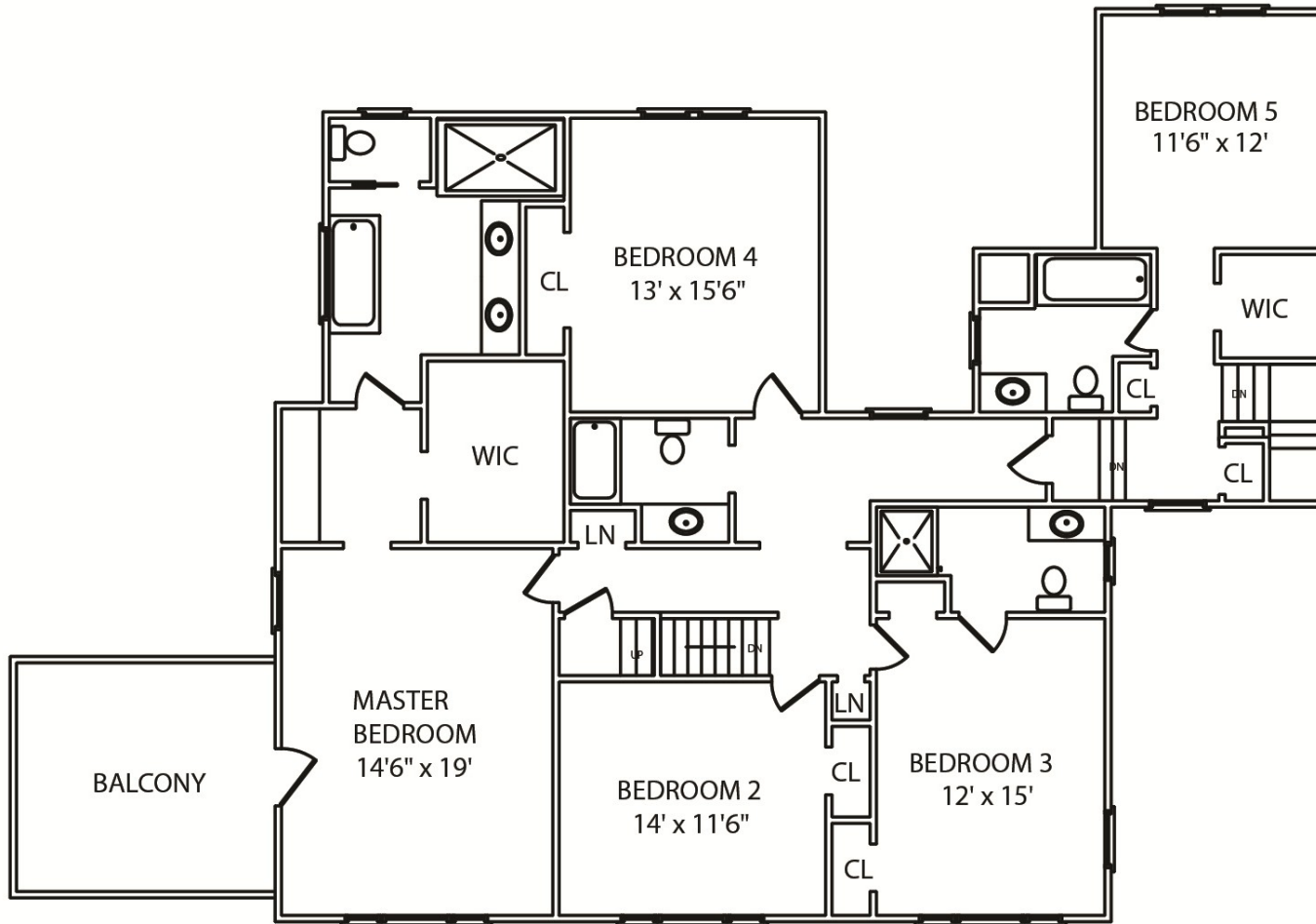
NOT TO SCALE - This floor plan is provided for illustration purposes only. Room positions and dimensions are approximate and should be independently measured for accuracy.



Sue Adler
KELLER WILLIAMS
PREMIER PROPERTIES

Cell: (973) 975-0197
Office: (973) 376-0033 x101
Sue@sueadler.com
www.sueadler.com/7Woodmere

sueadler 
THE #1 KELLER WILLIAMS TEAM IN NEW JERSEY **team**



SECOND FLOOR

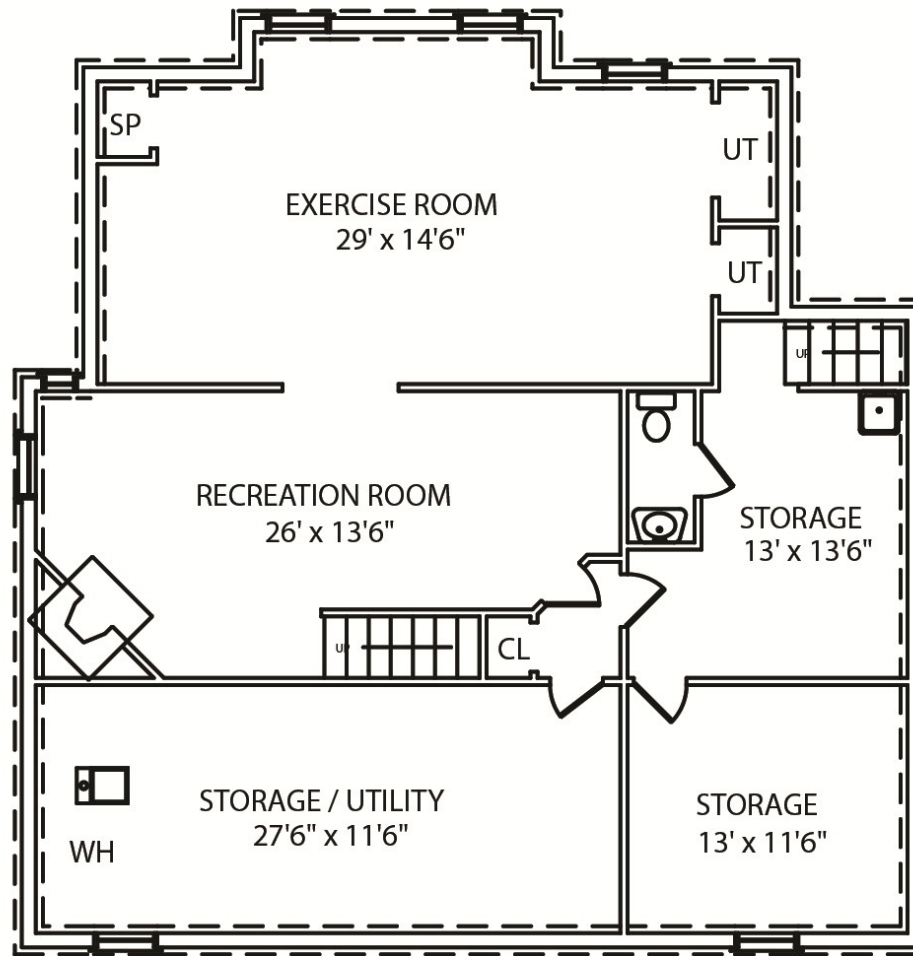
NOT TO SCALE - This floor plan is provided for illustration purposes only.
Room positions and dimensions are approximate and should be independently measured for accuracy.



Sue Adler
KELLER WILLIAMS
PREMIER PROPERTIES

Cell: (973) 975-0197
Office: (973) 376-0033 x101
Sue@sueadler.com
www.sueadler.com/7Woodmere

sueadler 
THE #1 KELLER WILLIAMS TEAM IN NEW JERSEY **team**



LOWER LEVEL

NOT TO SCALE - This floor plan is provided for illustration purposes only. Room positions and dimensions are approximate and should be independently measured for accuracy.



Sue Adler
KELLER WILLIAMS
 PREMIER PROPERTIES

Cell: (973) 975-0197
 Office: (973) 376-0033 x101
 Sue@sueadler.com
 www.sueadler.com/7Woodmere

sueadler 
 THE #1 KELLER WILLIAMS TEAM IN NEW JERSEY **team**