

19 Country Club Drive

Chatham, New Jersey



Sue Adler
KELLER WILLIAMS
PREMIER PROPERTIES

sueadler 
THE #1 KELLER WILLIAMS TEAM IN NEW JERSEY team

Each Keller Williams office is independently owned and operated.





Step into 19 Country Club Drive on a sought after street in Chatham Township where style, elegance and comfort await you! Situated on a picturesque, tree-lined street surrounded by multi-million dollar homes in the Rolling Hill section, this magnificent Colonial has been renovated to perfection, both inside and out.

Sitting on just under half an acre of land with manicured trees and shrubs, the front bluestone walkway guides you to the front door and into the double story entrance foyer leading to the open, airy floor plan of well planned living and entertaining spaces. The Dining Room features large picture windows, gas fireplace and warm toned hardwood floor. The addition of the family room offers soaring high vaulted ceilings and focal wall with gas fireplace, dramatic mantle and flanking custom built-in shelving and storage. The addition of the butler's pantry with wine and beverage refrigerators further makes entertaining in this incredible space that much easier. A conveniently located Powder Room rounds out this area of the home.

Central to the open first level is the Kitchen inspired by any cook's dream. With top-of-the line appliances, the abundant counter space and granite top center island and breakfast bar make cooking both gratifying and delightful. Enjoy dining informally in the adjacent breakfast area (extension of the kitchen) overlooking the bluestone patio and rear yard.



Just up a couple of steps you will find the first set of sleeping quarters including 3 bedrooms with hardwood floor and ample closet space. One bedroom is complete with en-suite full bathroom and just down the hall is an additional full bathroom servicing the other two bedrooms.

On the second level the Master Suite awaits you with double-sided gas fireplace, dressing area that could easily work as a private office and large custom walk-in closet. Relax away the cares of the day in the spa-like Master Bath complete with soaking tub, walk-in shower and double vanity. Steps down the hall is the Sitting Room, which would easily work as an additional Bedroom, with double door entry, hardwood floor and shared fireplace (with Master bedroom).

And there's more....the finished lower level includes a spacious Recreation Room, Bonus Room, as well as a newly renovated Mudroom and full Bathroom. The over-sized two-car garage can be accessed from the lower level. This house has so many options to grow with your changing family, coupled with its sought after location, makes 19 Country Club drive a perfect place to call home.

Inside and Out...

First Level

- 2-story entry Foyer with chandelier, sconces, wall with custom panel molding, hardwood floor and two coat closets
- Dining Room with hardwood floor, large picture windows, fireplace with stone surround and hearth and decorative wood mantel, crown molding, chandelier and recessed lighting
- Powder Room with hardwood floor, recessed lighting, light fixture, mirror and pedestal sink
- Butler's pantry with hardwood floor, recessed lighting, crown molding, Sub-Zero wine refrigerator, 2 drawer refrigerators and built-in wine racks and storage
- Family Room with hardwood floor, vaulted bead board and wood trim ceiling, custom architectural windows, custom built-ins, fireplace with stone surround and decorative wood mantel, crown molding, recessed lighting, custom light fixture, wired sound, access to rear patio and yard
- Kitchen with hardwood floor, recessed lighting, granite countertops with custom cabinetry and under cabinet lighting, double sink, tumbled marble backsplash, GE Monogram six-burner gas/oven range, GE Monogram refrigerator, GE Monogram microwave, secondary GE Monogram oven, center island with breakfast bar, breakfast area with chandelier, additional custom cabinetry and beverage refrigerator and French sliders to rear patio and yard
- Hall Bathroom with tile floor, vanity with marble top, storage below and mirror with light above, shower over tub, window with shutters and linen closet
- Bedroom #2 with hardwood floor, windows with shutters, crown molding, walk-in closet, en-suite Bathroom with tile floor and mosaic detail inlay, vanity with marble top and storage below and mirror with light above, window with shutter and stall shower with glass door
- Bedroom #3 with hardwood floor, crown molding, windows with shutters and walk-in closet
- Bedroom #4 with hardwood floor, light fixture, windows with shutters and double door closet

Second Level

- Master Bedroom with carpeting, recessed lighting, double-sided gas fireplace with stone surround and decorative wood mantel, walk-in California Closet with ceiling attic access via stair, two double windows, ceiling fan with light, crown molding and dressing/bonus room with carpet, recessed lighting, window and access to attic storage via loft stairs
- Master Bathroom with tile floor and mosaic detail inlay, light fixture, double vanity with marble top, storage below and double mirrors with lighting above and overhead spotlighting, two medicine cabinets, soaking tub with decorative tile mosaic and overhead light, walk-in tile shower with glass door, linen closet and separate commode area with door
- Sitting Room/5th Bedroom with hardwood floor, angled ceiling, recessed lighting, double-sided gas fireplace with decorative stone surround and wood mantel with look through into Master Bedroom

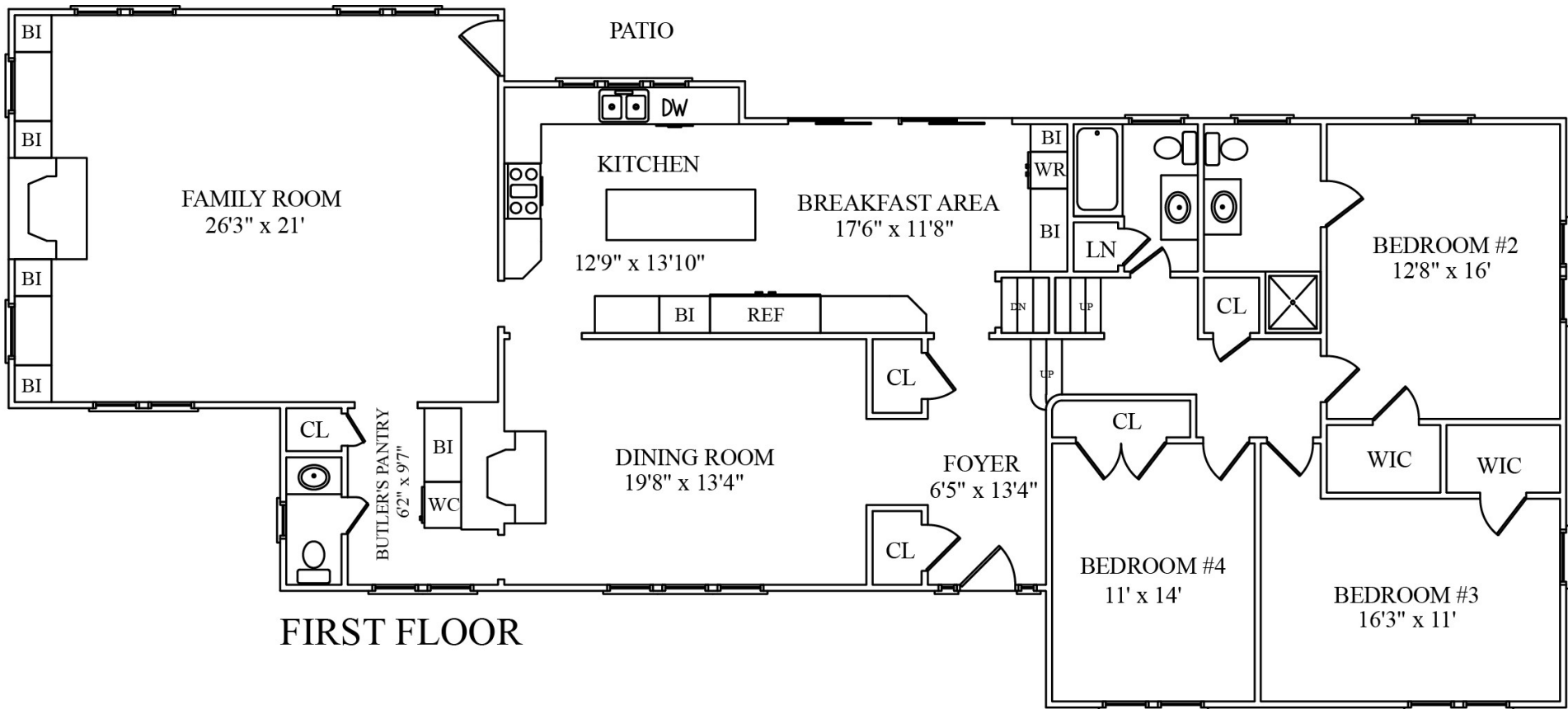
Lower Level

- Recreation Room with carpeting and recessed lighting
- Bonus Room with carpeting, recessed lighting, custom built-ins and walk-in closet
- Laundry Room with tile floor, built-in cabinets with countertop, overhead light and utility sink
- Full Bathroom with ceramic wood-look floor, vanity with marble top, storage below and mirror with overhead light, stall shower with marble mosaic walls and glass door
- Mudroom with ceramic wood-look floor, bench seating, hooks with storage shelf above and built-in cubbies
- Access to over-sized two-car GarageTek garage with storage

Additional Features

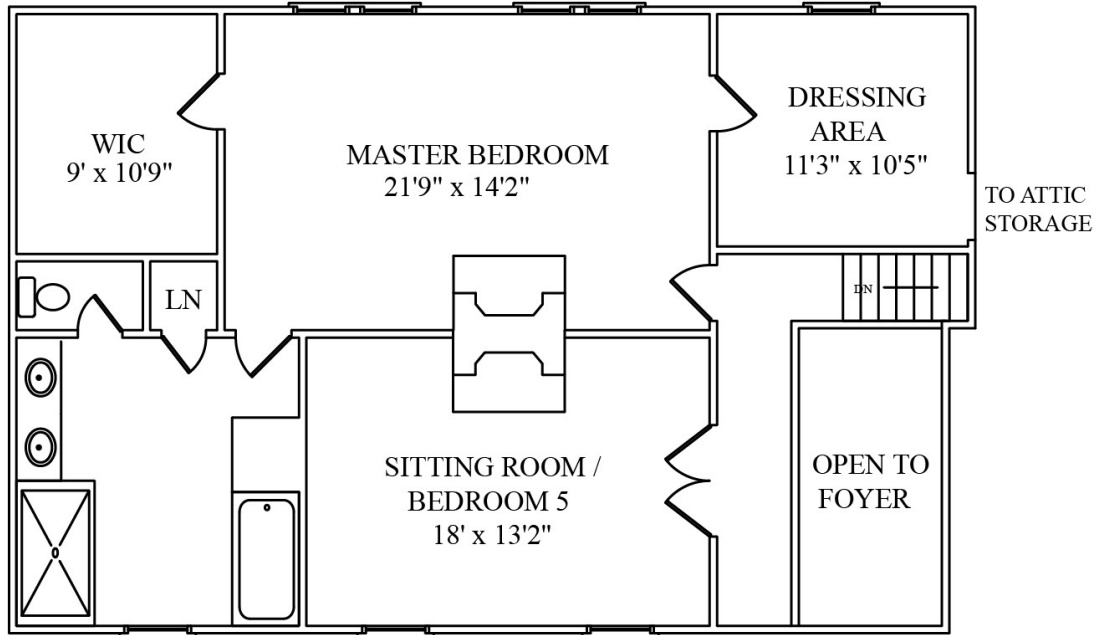
- Down to studs remodel (2007)
- Family Room and Butler's Pantry added (2013)
- Complete Lower Level Bathroom renovation, custom Mudroom remodel (2014)
- Entrance Hall remodel with custom paneling (2014)
- Rear Patio with professional landscaping, mature greenery, landscape lighting and fenced-in yard
- Bluestone front walkway
- Pipe/wiring for gas generator
- 3-zone heating



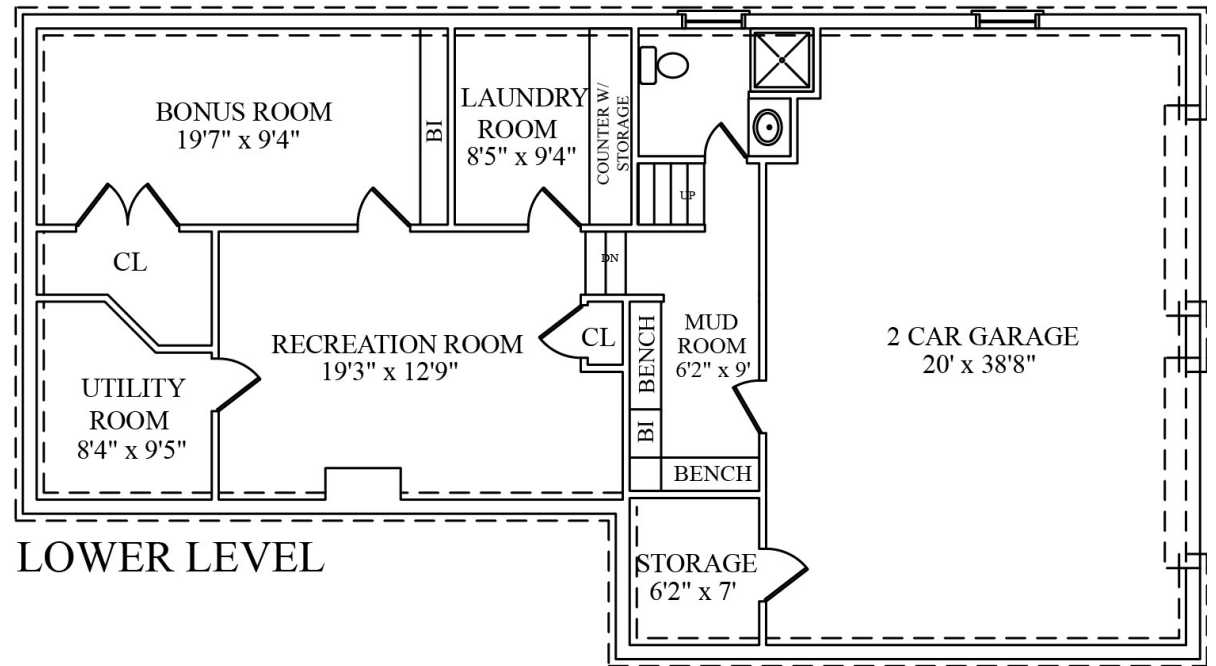


FIRST FLOOR

NOT TO SCALE - This floor plan is provided for illustration purposes only.
 Room positions and dimensions are approximate and should be independently measured for accuracy.



SECOND FLOOR



LOWER LEVEL

NOT TO SCALE - This floor plan is provided for illustration purposes only.
Room positions and dimensions are approximate and should be independently measured for accuracy.



Sue Adler
KELLER WILLIAMS
PREMIER PROPERTIES



Cell: (973) 975-0197
Office: (973) 376-0033 x101
Sue@sueadler.com
www.sueadler.com/19CountryClub

sueadler 
THE #1 KELLER WILLIAMS TEAM IN NEW JERSEY **team**