

22 Wade Drive

Summit, New Jersey



Sue Adler
KELLER WILLIAMS
PREMIER PROPERTIES

sueadler 
THE #1 KELLER WILLIAMS TEAM IN NEW JERSEY team

Each Keller Williams office is independently owned and operated.



Welcome to 22 Wade Drive, a stunning 5 bedroom, 3 full bathroom split level home that's full of storage space, renovated bathrooms and a custom design. Step inside right into the sun soaked Living Room, with impressive natural light from the many windows, while overlooking the picturesque in-ground heated gunite pool in the rear, the meticulously maintained home's hidden gem. Exposed ceiling beams set the original look against the incredible recent renovations. With the flexible floorplan, stroll right into the Dining Room and enjoy dinner with the family under a custom chandelier. A few steps away and you will find the eat-in Kitchen, renovated to perfection with new appliances, granite counters, and custom ceramic backsplash.

Just a few steps down to the lower level a warm, bright Family Room with custom dry bar and striking fireplace invites you into the space. The recently renovated downstairs would not be complete without a full updated bathroom, convenient Laundry Room, spacious pantry that would easily work as a Mudroom, additional bedroom and perfectly located Recreation Room with walkout access to the gorgeous backyard.





Upstairs, you will be greeted by a warm Master Bedroom with a perfectly updated en-suite bathroom with striking glass shower enclosure. Two additional spacious bedrooms welcome you with generously sized rooms, ample closet space and tons of natural light, as well as an additional updated full hall bathroom. And there is more! The bonus 3rd floor is home to a completely custom Office/Bedroom carved out of the attic that can be used for work-from-home parents, an additional bedroom, playroom for the kids – the space is so flexible, the options are endless!

Conveniently situated blocks from the Summit train station, residents can access downtown Manhattan in mere minutes. Bustling downtown Summit is full of cafes and restaurants, sought after schools and plenty of places to have fun, making 22 Wade Drive the perfect place to call home.



Inside and Out...

First Level

- Living Room with hardwood-style floors with picture windows, sliding windows, exposed beamed ceiling and baseboard molding
- Dining Room with hardwood-style floor, window, chandelier, coat closet and china closet
- Eat-in Kitchen with ceramic tile floor, granite counter tops with ceramic backsplash featuring decorative detailing, GE Profile refrigerator, GE Spectra gas oven with four ranges, Whirlpool Gold dishwasher, 2 light fixtures and two windows

Second Level

- Master Bedroom with carpet, security system motion sensor controls, two closets with double rods and light fixtures, two windows, en-suite Full Bathroom with stand up shower featuring partial glass wall and inset shelving, heated hanging towel rack, pedestal sink with storage below, ceramic tile floor with ½ wall tiling and window
- Bedroom #2 with hardwood floor, baseboard molding, light fixture, two windows and closet
- Bedroom #3 with carpet, light fixture, window and closet with double rods and light fixture
- Hall Bathroom with shower over tub with inset shelving, pedestal sink, ceramic floor, baseboard molding, window, built-in storage, recessed lighting and two sconces

Third Level

- Office/Bedroom #4 with carpet, angled ceiling, two windows, walk-in closet and access to large attic storage space

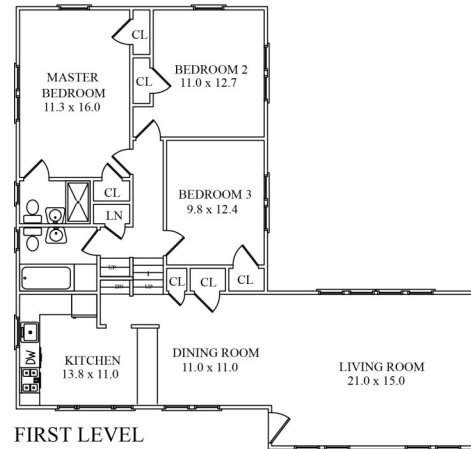
Lower Level

- Family Room with recessed lighting, carpet, mounted audio surround sound speakers, oversized fireplace with brick hearth and surround and glass doors, ½ wall picture ledge, dry bar and two large storage closets
- Laundry/Utility Room with built-in shelving and new front loading Whirlpool washer and dryer on pedestals with workspace and utility sink

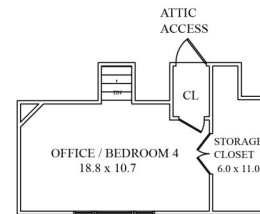
Ground Level

- Recreation Room with tile floor, paneled walls, track lighting, recessed lighting, two windows and walkout access to yard
- Bedroom #5/Exercise Room with carpet, two windows, built in shelving, closet and exposed beamed ceiling
- Hall Bathroom with tile floor, pedestal sink, shower over tub with inset shelving, recessed lighting and window
- Pantry/Storage and built-in shelving, additional refrigerator, oversized storage

SECOND LEVEL

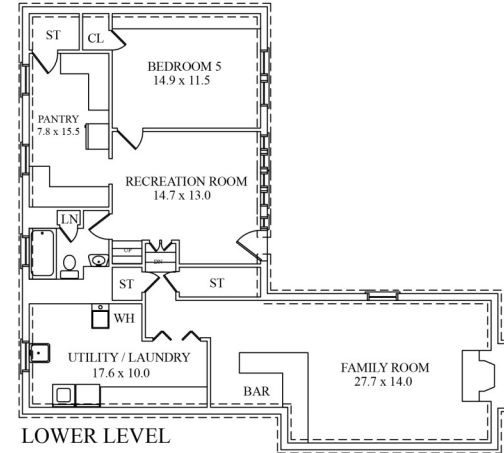


FIRST LEVEL



THIRD FLOOR

GROUND LEVEL



LOWER LEVEL

NOT TO SCALE - This floor plan is provided for illustration purposes only. Room positions and dimensions are approximate and should be independently measured for accuracy.

Additional Features and Upgrades

- Living Room and Dining Room flooring replaced (2016)
- Roof replaced (2012)
- Kitchen renovated (2001)
- Bathrooms renovated (2001)
- New doors and hardware throughout home (2001)
- Lower Level renovation (2001)
- Furnace (2009)
- Water heater (2009)
- Driveway repaved and Belgium blocks added to driveway and curbing (2011)
- HVAC system with 1 zone heating (2009)
- In-ground heated gunite pool and equipment
- Portable Generator
- Professional landscaping
- Security system with motion sensors
- Underground sprinkler system
- Fully fenced yard
- Driveway parking for 6 cars



Cell: (973) 464-9129
Office: (973) 376-0033 x101
Sue@SueAdler.com
www.sueadler.com/22Wade

Sue Adler
KELLER WILLIAMS
PREMIER PROPERTIES