

9 Winthrop Place

Maplewood, New Jersey



Sue Adler
KELLER WILLIAMS
PREMIER PROPERTIES

sueadler 
THE #1 KELLER WILLIAMS TEAM IN NEW JERSEY team

Each Keller Williams office is independently owned and operated.



A sunlight-filled enclosed porch welcomes you home to 9 Winthrop Place. Enjoy warm summer nights, spring afternoons, and even a fall morning in your almost-outdoor space. Step inside and be welcomed by a Living Room adorned in hardwood floors, cased entryways, crown and baseboard molding, and a uniquely detailed ceiling. Enjoy these beautiful updates as you travel through the Dining Room with a built-in bar and lots of space for your family to sit down to dinner. Built-in shelving features will surprise you in nearly every room! The open floor concept takes you from the Dining Room into the newly updated Kitchen. Stainless steel appliances like the GE Monogram four burner gas cooktop and griddle take cooking to the next level while your eyes are drawn upward to the stunning contemporary hood with floating glass shelving.





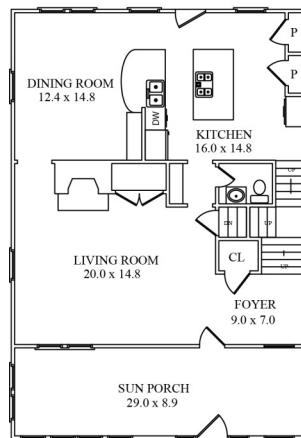
Step upstairs from either the Kitchen or Living Room and find more surprises on the Second Level with four spacious bedrooms featuring hardwood floors, tons of space, lots of light and baseboard moldings that make each room feel special. Yet another level awaits you, as access to the attic through a full staircase is available on this floor. A cedar closet, an additional bedroom and an open area gives your family plenty of space to grow and enjoy. Back outside and not to be missed, you'll have a large backyard with impressive landscaping - just picture your family enjoying outdoor activities together! And there's more - the lower level is the perfect place to gather and is also home to an additional half bathroom.

From top to bottom, this stunning house is a wonderful mix of classic architecture and contemporary amenities. Within a few short blocks to fabulous shopping and dining in the lively town center, a sought after school system, as well as public transportation into nearby Manhattan, 9 Winthrop Place is a wonderful place to call home.

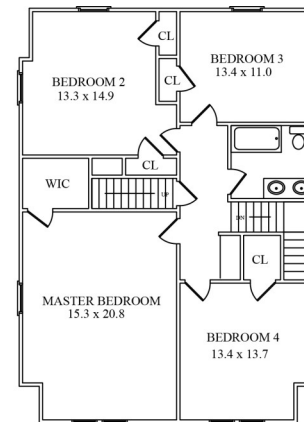
Inside and Out...

First Level

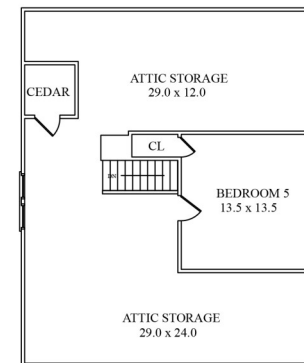
- Foyer with hardwood floor and coat closet
- Sun Room with hardwood floor, wrap around windows with display ledges, ceiling fan, wood paneled ceiling
- Living Room with hardwood floor, baseboard and crown molding, three windows with custom blinds, built in shelving with folding double doors, fireplace with brick surround and hearth and wood mantel, modified coffered ceiling
- Powder Room with cork tile floor, chair rail detail, baseboard molding, vanity sink with storage below, mirror with overhead light
- Kitchen with cork tile floor, crown and baseboard molding, recessed lighting, built in storage and two pantries, two windows with custom blinds, built in stainless steel GE Profile microwave, stainless steel GE Profile electric wall oven, stainless steel Bosch dishwasher, stainless steel Kenmore Elite refrigerator, GE Monogram four burner gas cooktop with griddle, stainless steel custom hood with glass shelving above, Vinotemp wine fridge, combination stainless steel and soapstone countertop and island
- Dining Room with hardwood floor, crown and baseboard molding, 2 windows with views of the deck, soapstone bar open with look-through to Kitchen, built-in shelving
- Bedroom #2 with hardwood floors, large closet with shelving, large windows with custom blinds, and baseboard molding
- Bedroom #3 with hardwood floors, large closet with shelving, large windows with custom blinds, and baseboard molding
- Hallway Linen Closet with shelves and drawers
- Hallway Bathroom with shower over tub combination, tiled walls, extra linen closet, pedestal sink, and tile floors
- Master Bedroom with handsome double doors, hardwood floors, large windows with custom blinds, walk-in closet with shelving, and en-suite bathroom
- Master Bathroom with tiled stand-up shower, waterfall shower head, and extra linen/storage closet



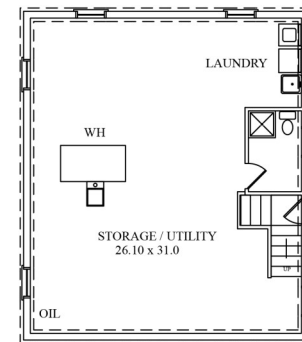
FIRST FLOOR



SECOND FLOOR



THIRD FLOOR



LOWER LEVEL

NOT TO SCALE - This floor plan is provided for illustration purposes only. Room positions and dimensions are approximate and should be independently measured for accuracy.

Second Level

- Master Bedroom with hardwood floor, baseboard and crown molding, three windows with custom blinds, walk-in closet, light fixture
- Bedroom #2 with hardwood floor, baseboard and crown molding, two windows with custom blinds, 2 closets, light fixture
- Bedroom #3 with hardwood floor, baseboard molding, two windows with custom blinds, closet, light fixture
- Bedroom #4 with hardwood floor, baseboard molding, three windows with custom blinds, closet, light fixture
- Hall Bathroom with soapstone tile floor, crown molding, window with custom blinds, shower over tub with white subway tiling, soapstone vanity countertop with double sinks and storage below, over sink sconce lights
- Built- linen closet in hallway with 6 drawers underneath

Third Level

- Bedroom #5 with painted hardwood floor, baseboard molding, two windows with custom blinds, closet, light fixture
- Walk-out full attic storage/Bonus Area with cedar closet

Lower Level

- Basement with 6 above grade windows, under stair storage, additional freezer, overhead light fixtures
- Half Bath with stall shower, one above grade window, light fixture
- Laundry Area with LG washer and Kenmore Elite dryer and utility sink

Updates and Additional Features

- Professional landscaping (2016)
- Interior paint (2016)
- Front walkway (2016)
- New Attic vents (2015)
- 2-car detached Garage with custom loft storage, and new electric door opener (2012)
- Kitchen/Dining open floor plan (2007)
- Brand new Kitchen appliances (2007)
- Updated bathrooms (2007)
- Deck addition (2007)
- 1 Sump pump (2007)
- 6-car Driveway
- Security system with 24 hour monitoring on doors and windows with 2 motion sensors
- 1-zone heating

Cell: (973) 464-9129
Office: (973) 376-0033 x101
Sue@sueadler.com
www.sueadler.com/9Winthrop



sueadler 
THE #1 KELLER WILLIAMS TEAM IN NEW JERSEY team