

8 Elmwood Place

Short Hills, New Jersey



Sue Adler
KELLER WILLIAMS
PREMIER PROPERTIES

sueadler 
THE #1 KELLER WILLIAMS TEAM IN NEW JERSEY team

Each Keller Williams office is independently owned and operated.



Drive up the tree-lined street in sought after Glenwood and walk up the charming stone walkway to this perfectly designed 5 bedroom, 3 ½ bath home, with a seamless open floorplan and ample living space - 8 Elmwood Place is the model of absolute perfection. Enter this stunning home through the warm, wood entryway and become transfixed by all this house has to offer – the glowing natural light meets you in the foyer, featuring an orb-crystal chandelier, hardwood floors and soothing paint colors, which extends throughout the entire 1st and 2nd floors. Move into the sun-drenched Living Room gracefully adorned with wainscoting and high design starburst chandelier with filament lighting. Dinner parties are a dream in the elegant formal Dining Room featuring wainscoting and graceful rectangular pillar candle chandelier. The Gourmet Chef's Kitchen is outstanding with superb design and high end finishes. An exquisite island, with waterfall edge Quartz countertops, exhibits the best in style and function. The stainless steel appliances, stone countertops and custom shaker-style white cabinetry complete the sophistication and function of this space. Breakfast is served in the light-filled adjacent Breakfast Room with sliding French Door looking out to the ample property beyond.

Be amazed by the magnificent Family Room that flows directly from the Chef's Kitchen. This impressive Family Room, bathed in sunlight and with its own elegant fireplace, exudes relaxation and is well-suited for family game night, movie watching or cozy nights by the fire. And not to be missed is a first floor bedroom, easily used as a guest room, nanny's room or office. A beautiful full Bathroom rounds out this floor.



When it's time to retire for the evening, the stately staircase leads you to the second floor literally drenched in sunlight. Luxury abounds in the private and open Master Bedroom with an arched ceiling and generous windows. The suite is functionally designed with a generous walk-in closet. Enjoy a soak in the tub in the en suite spa-like Master Bathroom complete with marble backsplash tile, oversized shower with marble tile and stylish double vanity. 3 additional bedrooms are steeped in sunlight and include generous double closets and large windows. Laundry is a snap in the 2nd Floor Laundry Room with stainless steel Samsung High Efficiency washer and dryer.

And there's more... The massive Lower Level with Recreation Room will provide endless hours of family entertainment. Equipped with an area for movie watching, children's art studio, wine storage and/or exercise room, the Lower Level provides all the space you need for any pursuit. And it doesn't end there. Easily accessed from the Breakfast Room, relax in the outdoor entertaining area that flows easily from inside, with a stunning rear deck and patio paver. Enclosed by a charming picket fence, is ready for an al fresco dinner party or simply roasting marshmallows with friends.

This truly is an amazing opportunity to own a perfectly appointed home in one of Short Hill's best neighborhoods. Just minutes from Blue Ribbon schools, NYC transportation, Hartshorn Arboretum and downtown Millburn shopping, 8 Elmwood Place is an absolute must see!

Inside and Out...

First Level

- Wood front door with 8" glass sidelights and arched window above
- 2 story Entry Foyer featuring hardwood floors, orb crystal chandelier light fixture, baseboard molding
- Coat Closet
- Living Room featuring hardwood floors, wainscoting, starburst chandelier with filament lighting, crown and baseboard molding
- Dining Room featuring hardwood floors, wainscoting, pillar candle rectangular chandelier, crown and baseboard molding
- Gourmet Kitchen featuring center island/breakfast bar with waterfall Quartz countertops, rectangular pendant light fixture with filament lighting, custom shaker style cabinetry with Quartz countertops, nickel hardware, subway tile with herringbone pattern backsplash, stainless steel appliances (Samsung Refrigerator, Bosch double oven/microwave combo, Samsung range and oven, Samsung Dishwasher), stainless steel sink with gooseneck fixture, recessed lighting, hardwood floors
- Breakfast Room featuring sliding French doors out to backyard, starburst chandelier with filament lighting, hardwood floors, baseboard molding
- Door to 1 car Attached Garage with electric opener
- Family Room featuring hardwood floors, gas fireplace with stone surround and custom millwork, picture window, crown molding, recessed lighting
- Full Bathroom featuring tile floor, shower with marble basket weave and subway tile, vanity with storage, double sconce over mirror
- Bedroom #5 featuring hardwood floors, baseboard molding, large closet, flushmount light fixture

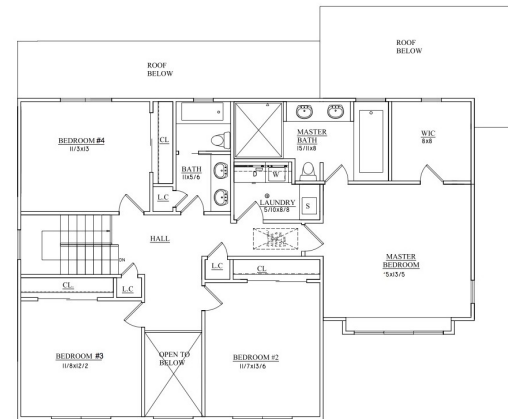
Second Level

- Stairway with decorative wood railings, glass lantern
- 2nd floor landing featuring arched window, balcony overlooking front entry way, orb crystal chandelier, recessed lighting, hardwood floors, baseboard molding
- 2 Linen closets with shelving
- Master Bedroom featuring arched ceiling, hardwood floors, picture window, recessed lighting, baseboard molding, oversized walk-in closet
- Master Bathroom featuring marble tile flooring, double vanity with storage and quartz countertops, oversized shower with recessed light, hexagonal marble floor tile, marble subway tile and built-in stone shelving, built-in soaking tub with stone surround, triple light sconces over each mirror, baseboard molding
- Bedroom #2 featuring hardwood floors, closet with double sliding doors, double picture window, baseboard molding, flushmount light fixture
- Bedroom #3 featuring hardwood floors, closet with double sliding doors, double picture window, baseboard molding, flushmount light fixture
- Bedroom #4 featuring hardwood floors, closet with double sliding doors, double picture window, baseboard molding, flushmount light fixture
- Full Hallway Bathroom featuring tile flooring, double vanity with storage and quartz countertop, shower over tub with tile surround, rustic 2 light sconces over each mirror
- 2nd Floor Laundry Room with tile flooring, Samsung Stainless Steel High Efficiency Washer and Dryer, Vanity with storage and sink, recessed lighting

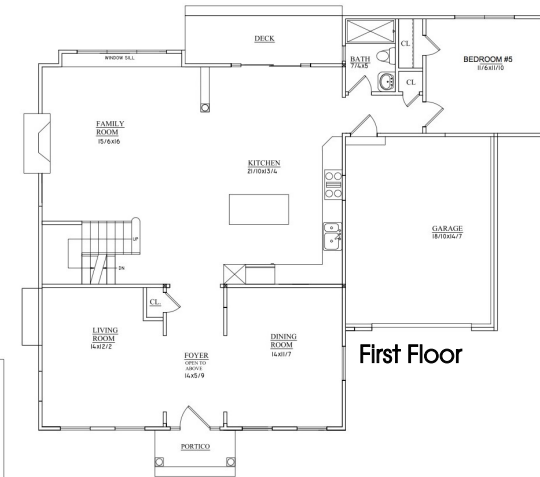
Lower Level

- Wood stairway to fully finished basement
- Recreation Room with Mohawk carpeting, recessed lighting, baseboard molding
- Fully Finished Room for Exercise Room, Game Room and/or Wine Storage
- Office with carpeting, flushmount fixture, baseboard molding
- Powder Room featuring wood vanity with storage and stone countertop, 3 light sconce over mirror, tile floor, baseboard molding
- Utility Room

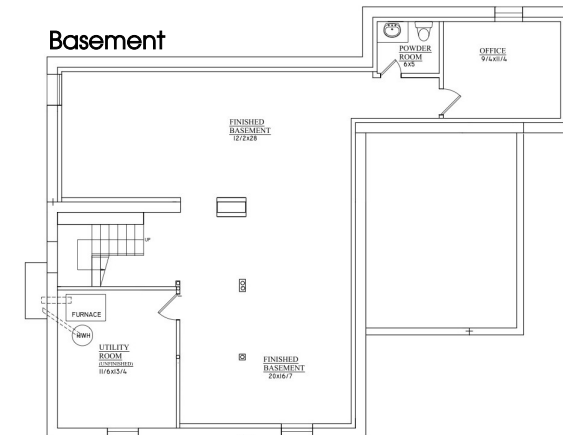
The Floor Plan



Second Floor



First Floor



Basement

Backyard/Landscaping

- Level, fenced in yard with picket fence, deck and paver patio
- New pine trees along rear fence line for privacy
- New driveway with pavers
- Hardie composite siding
- Anderson windows

Additional Features and Upgrades

- 9' ceilings on 1st floor and 8' ceilings on 2nd floor (Master Bedroom 8'+ under arch)
- 2 zone AC/Forced Air



Sue Adler
KELLER WILLIAMS
 PREMIER PROPERTIES

Cell: (973) 975-0197
 Office: (973) 376-0033 x101
 Sue@sueadler.com
 www.sueadler.com/8Elmwood