

17 Robin Hood Lane

Chatham, New Jersey



Sue Adler
KELLER WILLIAMS
PREMIER PROPERTIES

sueadler 
THE #1 KELLER WILLIAMS TEAM IN NEW JERSEY team

Each Keller Williams office is independently owned and operated.





Drive up the curved, tree-lined street to view this stunning like new 5 Bedroom, 5 and ½ Bathroom Custom Colonial, a vision of perfect proportion and detail. Stroll up the paver front walkway to the stunning front entrance graced by a stone exterior, mahogany front porch and a stately front door. Enter the spacious 2-story Entry Foyer and prepare to be overwhelmed by the sheer elegance of this home. With gleaming hardwood floors, 9-foot ceilings, custom moldings and an open floorplan, the First Level is the consummate example of high design and function.

The Entry Foyer includes dual Coat Closets and gorgeous views of the Living Room, Dining Room and elegant staircase. Beauty abounds in the gracious Living Room featuring a tray ceiling, custom moldings and an exquisite pendant light fixture with drum shade. Flow easily through the large archway into the impressive Family Room featuring a gas-burning fireplace with beautiful millwork, tray ceiling and a gorgeous picture window with a view of the lush backyard. Dinner parties are a dream in the magnificent Dining Room featuring a coffered ceiling, wainscoting and a stunning chandelier. The Dining Room connects easily to the impressive Gourmet Chef's Kitchen that will satisfy any cook's desire. Creamy white custom wood cabinetry with gorgeous custom island with seating for 5, Bar Area with custom cabinetry and Marvel wine refrigerator, granite countertops, top of the line appliances make the Kitchen extraordinary. Storage abounds in the Walk-In Pantry ensuring that not a thing will be out of place. Take in the backyard view in the Breakfast Area with an oversized French sliding door leading out to the substantial Bluestone Patio, perfect for al fresco dining or just spending time with friends. Rounding out the 1st Floor are a Powder Room, Office/Bedroom with a Full Bath, a Mudroom with custom cubbies, a large Laundry Room and a 3-car Garage complete with custom storage to eliminate any clutter.



When it's time to retire for the evening, the stately staircase, beaming with natural light, leads you to the second floor with 4 spacious bedrooms and 3 full baths. Luxury abounds in the enormous Master Bedroom drenched in sunlight and with plenty of nooks for cuddling up with a book. The Master Suite is functionally designed with a generous His and Her Walk-In Closet (plus an additional large closet) and a spa-like Master Bathroom complete with marble tiling, frameless glass shower door and soaking tub. 3 additional large-sized bedrooms are steeped in sunlight and include generous closets. Two additional Full Baths (1 in the Hallway and 1 Jack and Jill) are luxurious and well appointed with custom cabinetry and granite countertops.

And there's more...The Lower Level, with its massive Recreation Room, Arts and Crafts Room and Renovated Full Bathroom, is an entertainer's paradise. Whether it's movie watching, card games or children's art projects, the Lower Level provides wonderful functional space.

17 Robin Hood Lane is a dream home in every way. Just minutes from Blue Ribbon schools, NYC transportation, luxury shopping and downtown Chatham, this home cannot be missed!





Inside and Out...

First Level

- Outside Entry featuring stone façade, mahogany front porch, craftsman style mahogany front door with side lights, lantern
- 2-Story Entry Foyer featuring hardwood floors, wainscoting, crown molding, oil rubbed bronze chandelier, Coat Closets flanking front door, decorative ledge over front door and arched window
- Staircase featuring iron railings
- Living Room featuring hardwood floors, tray ceiling, crown and baseboard molding, pendant light fixture with decorative drum shade, plantation shutters and custom curtains, grass cloth wall paper, wall to wall archway into Family Room
- Dining Room featuring hardwood floors, wainscoting, coffered ceiling, crown molding, rectangular shaped fringe glass chandelier, grass cloth wallpaper, plantation shutters
- Powder Room featuring marble flooring, pedestal sink, oval tilting mirror, 2 light sconce over mirror, wallpaper
- Gourmet Chef's Kitchen featuring hardwood floors, recessed lighting, pendant lighting with drum shades over island, creamy ivory custom cabinetry, granite countertops, farm sink, dark wood island with seating for 5, Sub Zero Refrigerator, Thermador Range with 6 burners and griddle, Dishwasher, Sharp Microwave Drawer, tile backsplash
- Bar Area featuring Marvel Wine Refrigerator, stainless steel bar sink with gooseneck fixture, custom cabinetry with glass door cabinets above
- Walk-in Pantry with custom floor to ceiling shelving with electrical outlets at shelf level
- Breakfast Area featuring hardwood floors, sliding French doors out to Bluestone Patio, chandelier
- Family Room featuring hardwood floors, tray ceiling, crown molding, gas fireplace with custom millwork, stone surround and log set, large picture window, crown and baseboard molding, recessed lighting, custom curtain panels
- Office/Bedroom #5 featuring hardwood floors, ceiling fan, crown and baseboard molding, closet with double sliding doors
- Full Bathroom featuring tile flooring, tub/shower combination with marble tile surround, wood vanity with storage and gooseneck fixture, granite countertop, framed mirror, 3 sconce light above mirror, wallpaper
- Laundry Room featuring built in cabinetry with sink, granite countertops, Maxima Steam XL front loader washer and dryer, storage closet, tiled flooring, flush mount light fixture
- Mud Room featuring built-in cubbies with bead board and hooks, recessed lighting, door to Garage
- Rear staircase to 2nd Floor with wainscoting, iron railings and wood risers
- Heated 3 Car Garage featuring carriage style electric doors, custom garage storage and shelving

Lower Level

- Recreation Room with carpeting, baseboard molding, recessed lighting
- Bonus Room/Arts and Crafts Room with vinyl wood-look flooring, recessed lighting, baseboard molding
- Renovated Full Bathroom featuring wood-look tile, shower with subway tile surround and glass sliding doors, wood vanity with granite countertops, brushed nickel fixtures, 3 light sconce
- Storage Closet
- Utility Room for Water Heater/Furnace

Second Level

- Second Floor Landing featuring hardwood floors, crown and baseboard molding, recessed lighting, Linen Closet with floor to ceiling shelving, doorway to unfinished attic
- Master Bedroom Suite featuring tray ceiling, hardwood floors, crown and baseboard molding, recessed lighting, plantation shutters, closet with double doors and custom adjustable shelving, Enormous Walk In Closet with His and Her custom adjustable shelving and drawers
- Ensuite Master Bathroom featuring shower with frameless glass shower door with decorative tile and shower seat, waterfall shower head and handheld shower, basket weave floor tile in shower, soaking tub with tile surround, custom double vanity, gooseneck fixtures, granite countertops, marble tile flooring, chandelier, two 3 light sconces over each sink, recessed lighting, separate room for toilet
- Bedroom #2 (flexibly being used as Office) featuring hardwood floors, ceiling fan, crown and baseboard molding, plantation shutters, double closet
- Bedroom #3 featuring hardwood floors, crown and baseboard molding, double closet with custom adjustable shelving and drawers, ceiling fan, recessed lighting (shares Jack and Jill Full Bathroom)
- Bedroom #4 featuring chair rail, hardwood floors, crown and baseboard molding, double closet with custom adjustable shelving and drawers, ceiling fan, recessed lighting (shares Jack and Jill Full Bathroom)
- Jack and Jill Full Bathroom featuring custom wood vanity with 2 sinks, granite countertops, 2 light sconces over each mirror, gooseneck fixtures, tile flooring, separate room for toilet and shower, shower with glass doors and tile surround, chandelier
- Full Hall Bathroom featuring tiled flooring, custom wood vanity with granite countertops, mirror, 4 light sconce above mirror, flush mount light fixture, tub/shower combination with tile surround

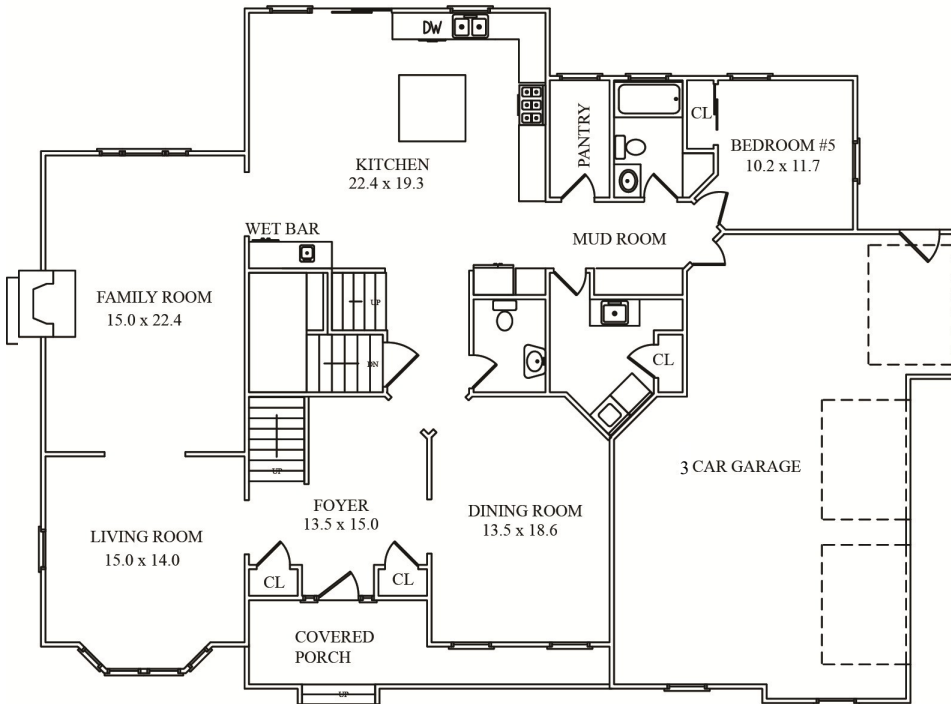
Additional Features/Upgrades

- Generator
- Wiring for Sonos System
- Family Room wired for surround sound
- 2 Zone Rheem HVAC with programmable thermostats
- 75 Gallon Hot Water Heater
- Wireless Security System (with hard wiring)
- Cement Board Siding and Azek Exterior Trim
- Irrigation System

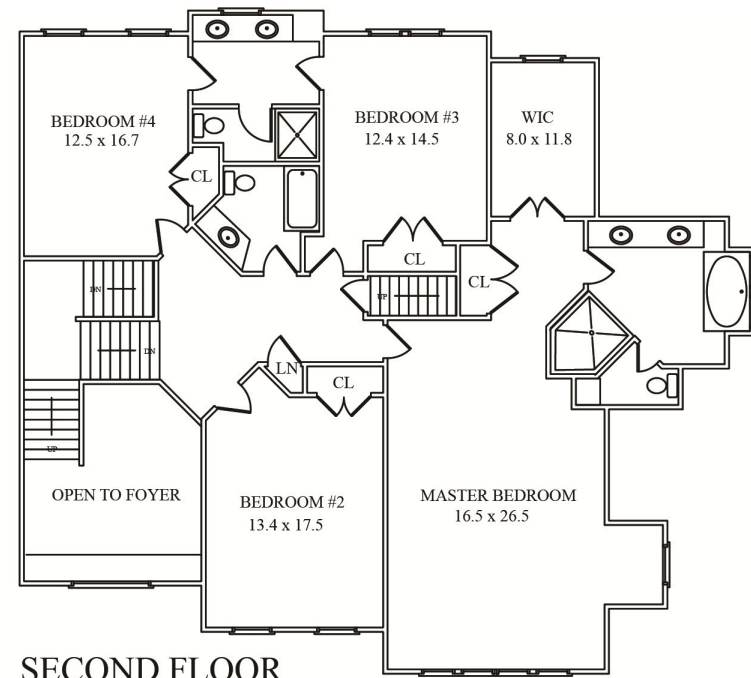
Backyard

- Bluestone steps from Breakfast Room
- Large Bluestone Patio
- Wiring for outdoor Sonos speakers
- Manicured Landscaping
- Storage Shed
- Swingset

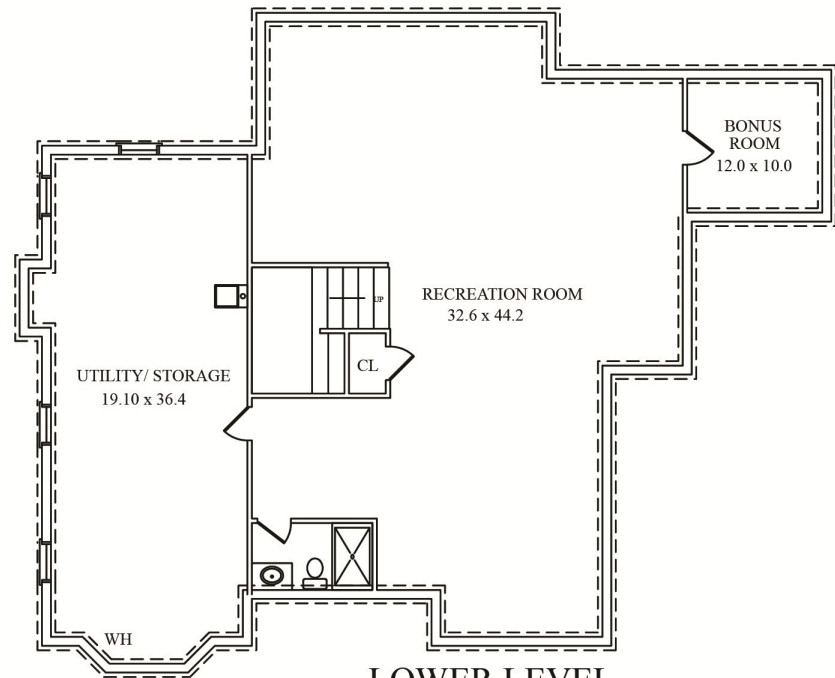




FIRST FLOOR



SECOND FLOOR



LOWER LEVEL

NOT TO SCALE - This floor plan is provided for illustration purposes only. Room positions and dimensions are approximate and should be independently measured for accuracy.



Sue Adler
KELLER WILLIAMS
PREMIER PROPERTIES



Cell: (973) 936-9129
Office: (973) 376-0033 x101
Sue@sueadler.com
www.sueadler.com/17RobinHood

sueadler 
THE #1 KELLER WILLIAMS TEAM IN NEW JERSEY **team**