

121 Glenmere Drive

Chatham, New Jersey



Sue Adler
KELLER WILLIAMS
PREMIER PROPERTIES

sueadler 
THE #1 KELLER WILLIAMS TEAM IN NEW JERSEY team

Each Keller Williams office is independently owned and operated.





Welcome to 121 Glenmere Drive, a truly unique home located on a tree-lined street in the sought after Wickham Woods section of Chatham Township. This custom designed multi-level home provides the ultimate in modern amenities, expansive, flexible living spaces and a show-stopping backyard oasis.

A short walk up the brick paver path leads you into the welcoming Entry Foyer with front-to-back views that provides your first taste of all this home has to offer. Proceed straight through the foyer into the spacious Living Room where gleaming hardwood floors and an abundance of light streaming in through a grand picture window creates a welcoming setting for family gatherings and holiday celebrations alike. Here, an elegant gas fireplace is flanked by custom lighted built-ins to provide an attractive setting for your prized collectibles. Continue on into the adjacent Dining Room to enjoy an elegant venue for formal dining. Or if you prefer, step through the French doors that provide easy access to the spectacular architect designed backyard just outside. Here you'll find an expansive brick paver patio surrounded by colorful lush gardens - a truly stunning environment for al fresco entertaining. Picture the space set with multiple tables and chairs and appetizing smells coming from the barbecue on a warm summer night. Step up to the upper tier to view a lush green lawn large enough for a child's swing set if desired.

Continue on into the spacious Kitchen where custom cherry cabinetry, high-end appliances and an abundance of counter and storage space are sure to please the most discerning of chefs. Enjoy a quick snack at the Breakfast Bar or a casual sit down meal at the kitchen table that boasts a large buffet and wet bar as well as outdoor views through large picture windows. After your meal, settle in to the expansive ground level Family Room featuring a full wall built-in entertainment center with surround sound built in speakers - a perfect setting to watch your favorite movie on TV or enjoy a family game night. A fully equipped Wine/Beverage Room, a Mud Room with access to the driveway and backyard and an elegant Powder Room complete the ground level space. Just a few steps down to the right you'll find the partially finished lower level Game Room that provides even more space for playtime and hobbies.



When it's time to retire at the end of the day, you'll find 6 spacious bedrooms and 3 full baths upstairs. The luxurious Master Suite awaits featuring a large, light filled bedroom, a room-sized His & Hers walk-in closet/dressing room and an elegant en suite bath with marble topped vanity and walk-in shower. Two additional bedrooms and another full bath complete the second level. On the next level are two spacious bedrooms with high ceilings and an abundance of closet space, both with professional built-ins as well as a fully equipped Laundry Room down the hall and another updated hallway bath. Finally you come to Bedroom #6 that's also the perfect setting for a family gym, movie room or home office should you desire.

121 Glenmere Drive is a move in ready home that brings generous living spaces and a pretty setting together into one fabulous package. With its sought after location, Blue Ribbon schools, easy access to NYC transportation, and world class shopping and restaurants, this property is the perfect place to call home.





Inside and Out...

First Level

- Entry Foyer with front-to-back views, hardwood floors, coat closet with sliding doors, crown molding, light fixture; access to Kitchen, steps to grade level and bedroom level, archway to Living Room
- Living Room with hardwood floors, large picture window set in alcove, crown molding, gas fireplace with carved wood mantel and marble surround flanked by custom built-ins with storage cabinets and lighted glass shelves, Bose sound system with built-in ceiling speakers; archway to Dining Room
- Dining Room with hardwood floors, French doors with shades and upgraded mullions leading to expansive patio, wainscoting, crystal chandelier with ceiling medallion, crown molding; doorway to Kitchen
- Kitchen with ceramic tile floor, custom cherry cabinetry, Corian counter tops, ceramic tile backsplash, Corian sink with window above, recessed lighting, under cabinet lighting, breakfast bar, KitchenAid double wall/convection oven, SubZero refrigerator/freezer with integrated cabinetry panel, built-in GE microwave, KitchenAid dishwasher, granite topped center island with JennAir 4 burner cooktop, pantry closet and additional pantry cabinet with pull out shelving, broom closet; open to Breakfast Room with ceramic tile floor, chandelier, large bay window with display shelf, additional picture window, side door with glass panes, buffet/wet bar with storage cabinets, glass fronted accent panels, wine rack, stainless steel prep sink

Ground Level

- Family Room featuring custom built-in entertainment center with storage cabinets, display shelving and wiring for sound system, carpet, crown molding, recessed lighting, 3 windows; archway to Mud Room, Bar and Powder Room
- Wine/Beverage Room with stone floor, utility sink, custom cabinets with faux marble top and bead board backsplash, bead board wainscoting, French door entry, window with bamboo shades
- Powder Room with stone tile floor, vanity with granite top, framed mirror above and storage cabinet below, window with grass cloth shade
- Mud Room with stone tile floor, built-in bench and cubby storage, wainscoting, coat closet; doorway to attached garage, doorway to backyard
- Storage/Utility Room

Second Level

- Gallery Landing with carpet, linen closet with shelving, additional storage closet, crystal light fixture
- Master Bedroom Suite featuring carpet, 2 windows, chandelier, room-sized His & Hers closet with, custom shelving, dressing area with built-in dresser unit, window with shade and recessed lighting, en suite bath with tile floor, 2 sink marble topped vanity with framed mirror and built-in medicine cabinet above, storage below, recessed lighting, glass door shower with 2 shower heads, built-in corner shelf and bench, window with blinds
- Bedroom #2 with hardwood floors, 2 large closets, 2 large windows, ceiling fixture
- Bedroom #3 (Office) with hardwood floors, crown molding, chair rail, double closet and light fixture
- Full Hallway Bath with marble tile floor, vanity with marble top and framed mirror above, storage cabinet below, recessed lighting, shower over tub with tiled walls and sliding glass door, window, crown molding, exhaust fan

Third Level

- Large landing with hardwood floors, linen closet, recessed lighting and light fixture
- Bedroom #4 with carpet, high ceilings, angled ceiling, ceiling fan, windows on 2 sides, large walk-in closet with built-in shelving
- Bedroom #5 with carpet, ceiling fan with light, angled ceiling, walk-in closet with custom shelving, large windows
- Hall Bath #2 with vanity with Corian top, large framed mirror above and storage cabinet below, tiled floor, linen cabinets, separate walk-in shower with sliding glass door, two shower heads, slatted doors to private commode with window
- Laundry Room with ceramic tile floor, storage cabinets with faux marble counter top, Samsung washer/dryer (new 2015), utility sink, closet, open shelving; access to large attic/storage area

Fourth Level

- Bedroom #6/Recreation Room with carpet, ceiling fan, recessed lighting, large walk-in closet with shelving, large window; access to attic

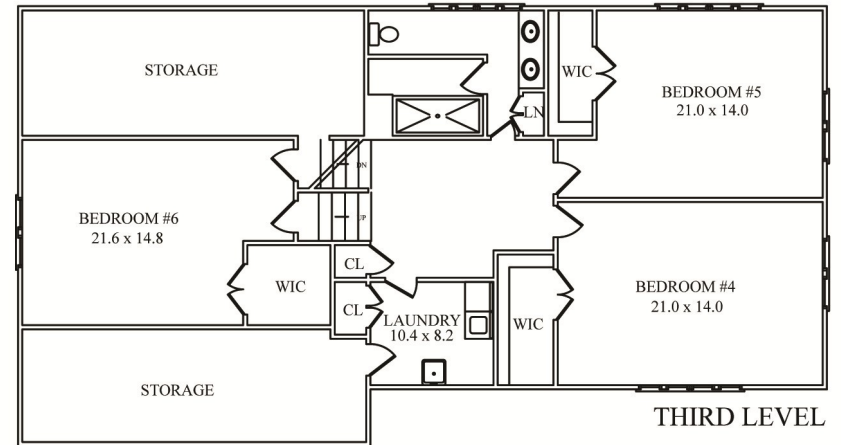
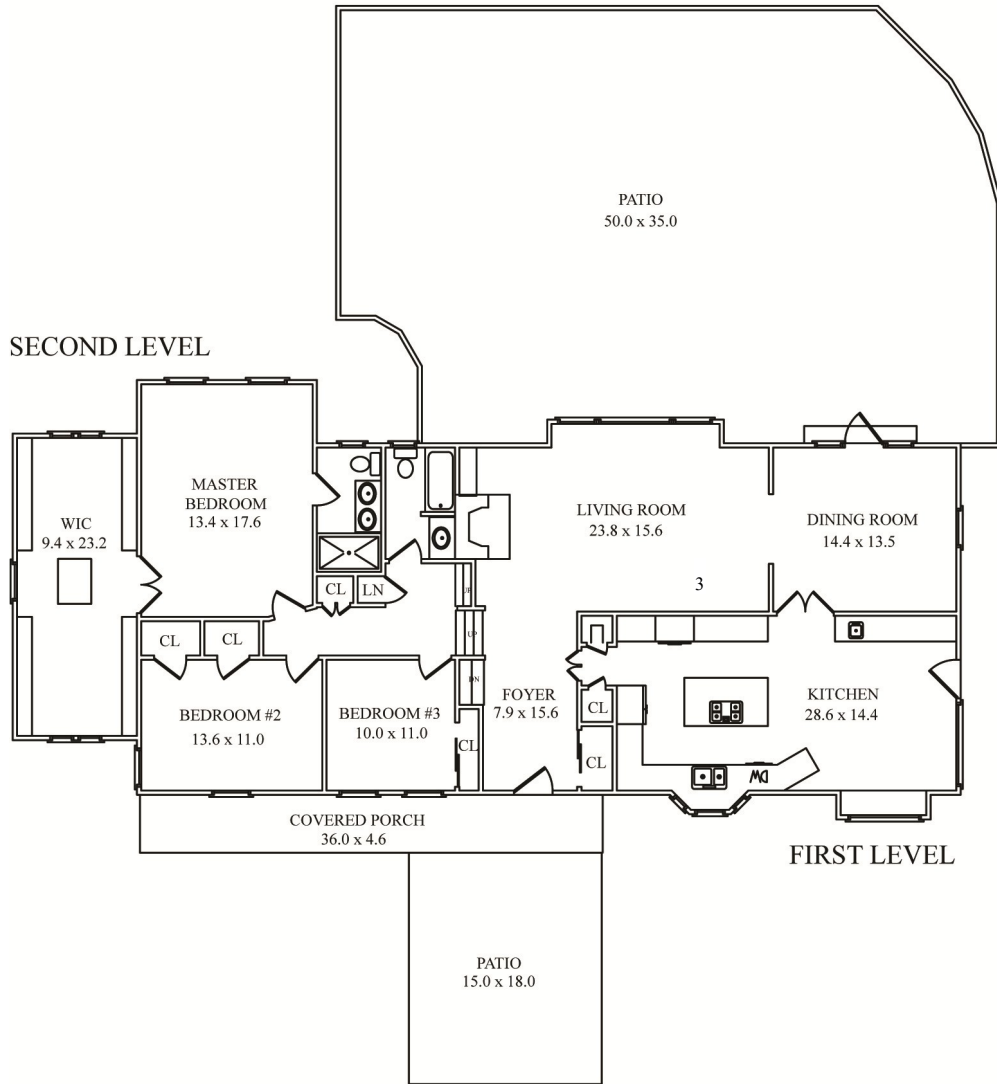
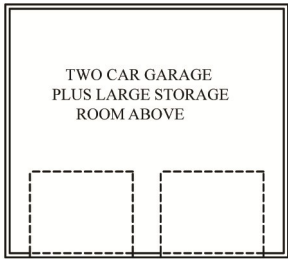
Lower Level

- Game Room with carpet; access to utilities and storage space

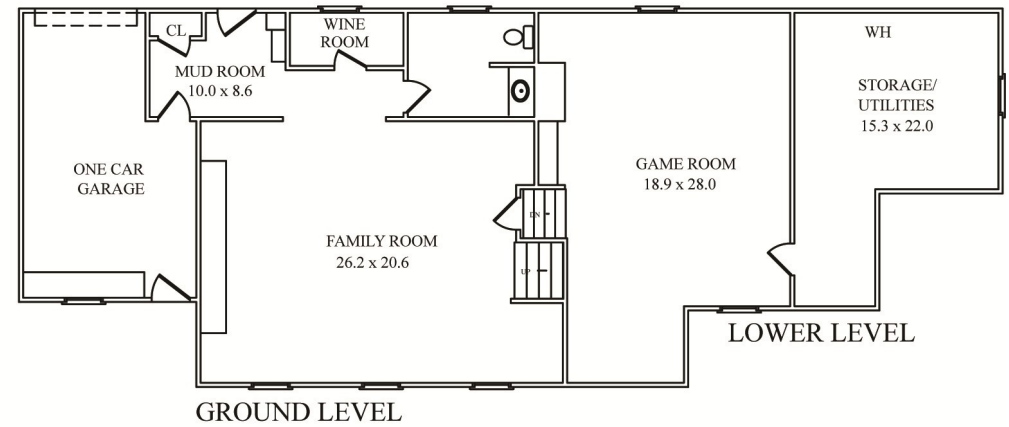
Additional Features/Upgrades

- Professionally landscaped property with brick paver walkway to front door, private two-tiered backyard featuring expansive brick paver patio surrounded by lush gardens, flat lawn on second tier, outdoor lighting, 4-zone underground sprinkler (front and back), Invisible dog fence
- 1-car attached garage with electric door, built-in work bench and storage cabinets
- 2-car detached garage with electric door and unfinished second level with electricity (flexible space ideal for studio, home office or home gym)
- 3-zone force air heat/central AC
- ADT alarm system
- Lower level has sump pump and French drains
- Whole house back-up generator
- New Samsung washer and dryer (2015)
- All doors solid wood





FOURTH LEVEL



NOT TO SCALE - This floor plan is provided for illustration purposes only.
Room positions and dimensions are approximate and should be independently measured for accuracy.



Sue Adler
KELLER WILLIAMS
PREMIER PROPERTIES



Cell: (973) 936-9129
Office: (973) 376-0033 x101
Sue@sueadler.com
www.sueadler.com/121Glenmere

sueadler 
THE #1 KELLER WILLIAMS TEAM IN NEW JERSEY **team**