

# 20 Claremont Drive

Short Hills, New Jersey



*Sue Adler*  
**KELLER WILLIAMS**  
PREMIER PROPERTIES

**sueadler**   
THE #1 KELLER WILLIAMS TEAM IN NEW JERSEY team

Each Keller Williams office is independently owned and operated.





Welcome to 20 Claremont Road! Move right in or turn into your dream home this meticulously maintained 3 Bedroom, 2 and 1/2 Bathroom Colonial, located on a level lot on a quiet, family-friendly street in Short Hill's sought after Glenwood neighborhood. With an exceptional location, just steps from downtown Millburn restaurants and shopping, Direct Train to NYC and top-rated schools, this house cannot be missed!

Drive up the tree-lined street and walk up the charming flagstone walkway. Curb appeal abounds with charming shutters, delightful front porch and professionally landscaped front yard. Enter through the welcoming front door into the Entry Vestibule with parquet-look floors and a convenient coat closet. Flow easily into the sun-drenched Living Room with a warm and inviting fireplace with dentil molding and a stately bay window. Elegant dinner parties await in the spacious Dining Room featuring hardwood floors, chair rail and graceful pendant light fixture. A gracious French door leads to the conveniently located Sun Room featuring windows at 3 exposures and a great view of the lush, flat property. The Sun Room is perfect for relaxing and unwinding at the end of the day. Move easily into the Kitchen with plenty of counter space, sunny window overlooking the yard and a bright and cheery Breakfast Room. The Kitchen is perfect for cooking nightly dinners or has all the bones to be renovated to your liking. A conveniently located Powder Room rounds out the First Floor.





Ready to retire for the evening? Walk up the stately staircase to the elegant 2<sup>nd</sup> Floor Landing complete with hardwood floors and built-in storage for linens. Wander into the well-appointed Master Bedroom featuring hardwood floors, three closets, neutral paint colors and plenty of natural light. An Ensuite Master Bathroom rounds out the Master Bedroom area. Roomy Bedrooms 2 and 3 feature hardwood floors, generous closets and abundant windows allowing for plenty of light. A spacious Full Bathroom with a stand-alone shower and its own tub serves the other 2 bedrooms.

And there's more! The Lower Level features a Laundry Room and carpeted Recreation Room with plenty of storage and recessed lighting. Whether it's a children's art studio or movie watching, the Lower Level adds plenty of functional space. And do not miss the exterior where you can find host friends for a barbeque or watch your little ones play from the Kitchen – the options for outdoor enjoyment are endless!

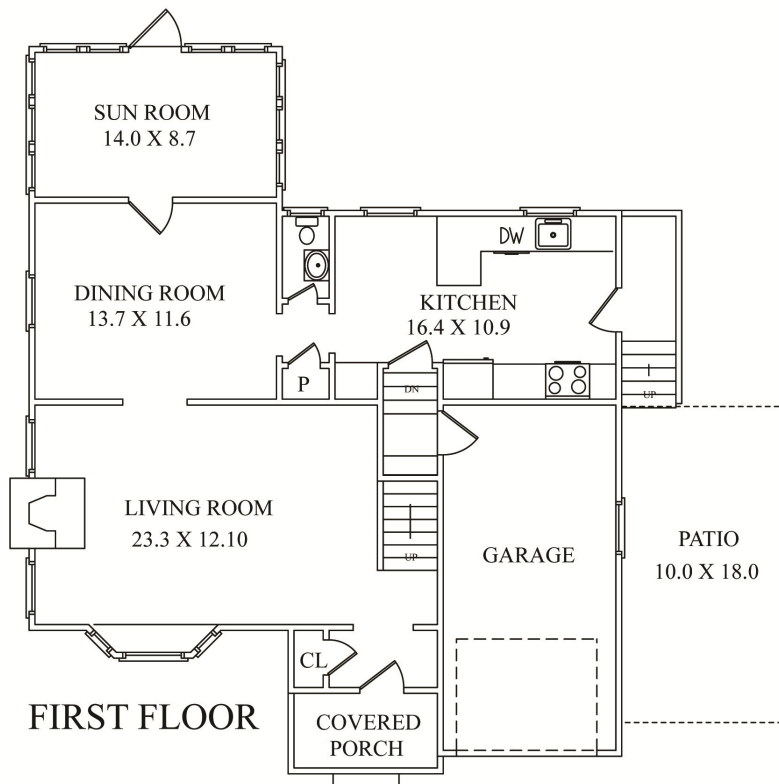
Don't miss this great opportunity to own a home in one of Short Hill's best neighborhoods. Just minutes from Blue Ribbon schools, NYC transportation, Hartshorn Arboretum and downtown Millburn shopping, 20 Claremont is an absolute must see and simply won't last!



# Inside and Out...

## First Level

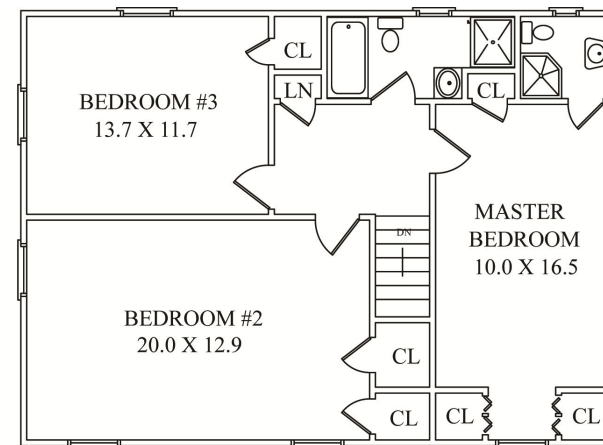
- Entry Vestibule featuring coat closet, parquet-look floors, flush mount light fixture, baseboard molding
- Living Room featuring carpeting (hardwood underneath), baseboard molding, crown molding, fireplace with millwork, dentil molding and brick surround, bay window, painted neutral off white
- Dining Room featuring hardwood floors, chair rail, crown molding, baseboard molding, French door out to Sun Room, painted neutral off white
- Sun Room featuring wainscoting, carpeting, windows at 3 exposures, ceiling fan with light
- Powder Room featuring linoleum flooring, pedestal sink, window, tile wainscoting, single sconce, medicine cabinet
- Kitchen featuring linoleum flooring, chair rail, tile wainscoting, wood cabinetry, Corian countertop, door to backyard, Kenmore dishwasher, GE refrigerator, Maytag Oven/Range, ceiling fan with light, pendant light over sink area, Breakfast Area with Pantry closet
- Stairway to Lower Level with access to 1 Car Garage



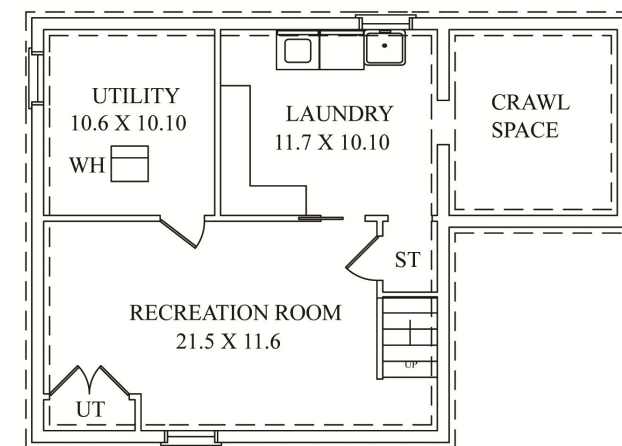
FIRST FLOOR

## Second Level

- Stairway with carpeting
- 2<sup>nd</sup> floor landing featuring hardwood floors, baseboard molding, Linen Closet with shelving and storage, pull down access to attic, flush mount light fixture
- Master Bedroom featuring hardwood floors, ceiling fan, baseboard molding, 3 closets, 2 windows, painted neutral off white
- Master Bathroom featuring linoleum flooring, tile wainscoting, shower, pedestal sink, medicine cabinet, single sconce, recessed light in shower
- Bedroom #2 featuring hardwood floors, baseboard molding, 3 windows, dual closets, painted neutral off white
- Bedroom #3 featuring carpeting (hardwood underneath), baseboard molding, 2 windows, closet, painted neutral off white
- Full Hallway Bathroom featuring linoleum flooring, bathtub, stand alone shower, wood vanity with storage, medicine cabinet, single sconce, flush mount light fixture, tile wainscoting



SECOND FLOOR



LOWER LEVEL

NOT TO SCALE - This floor plan is provided for illustration purposes only. Room positions and dimensions are approximate and should be independently measured for accuracy.

## Additional Features/Backyard

- Level, professionally landscaped flat yard
- Picket fence
- Brick patio on side
- Sump pump and French drains

## Lower Level

- Carpeted staircase to Lower Level
- Recreation Room featuring carpeting, baseboard molding, recessed lighting, storage closet under staircase, 2<sup>nd</sup> storage closet, painted neutral off white
- Utility Room
- Laundry Room featuring utility sink, built in cabinetry with storage

*Sue Adler*  
**KELLER WILLIAMS**  
 PREMIER PROPERTIES



Cell: (973) 936-9129  
 Office: (973) 376-0033 x101  
 Sue@sueadler.com  
 www.sueadler.com/20Claremont