

# 41 Spenser Drive

Short Hills, New Jersey



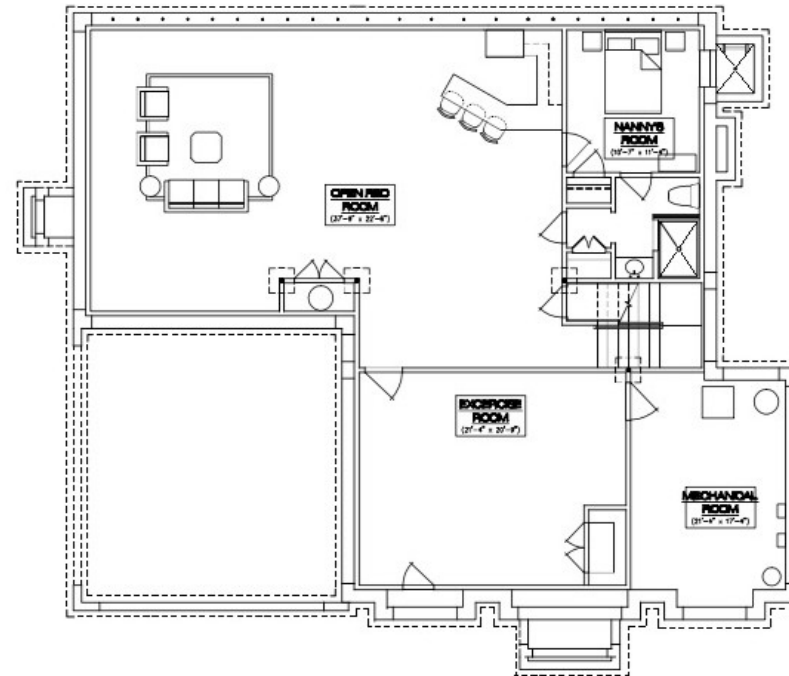
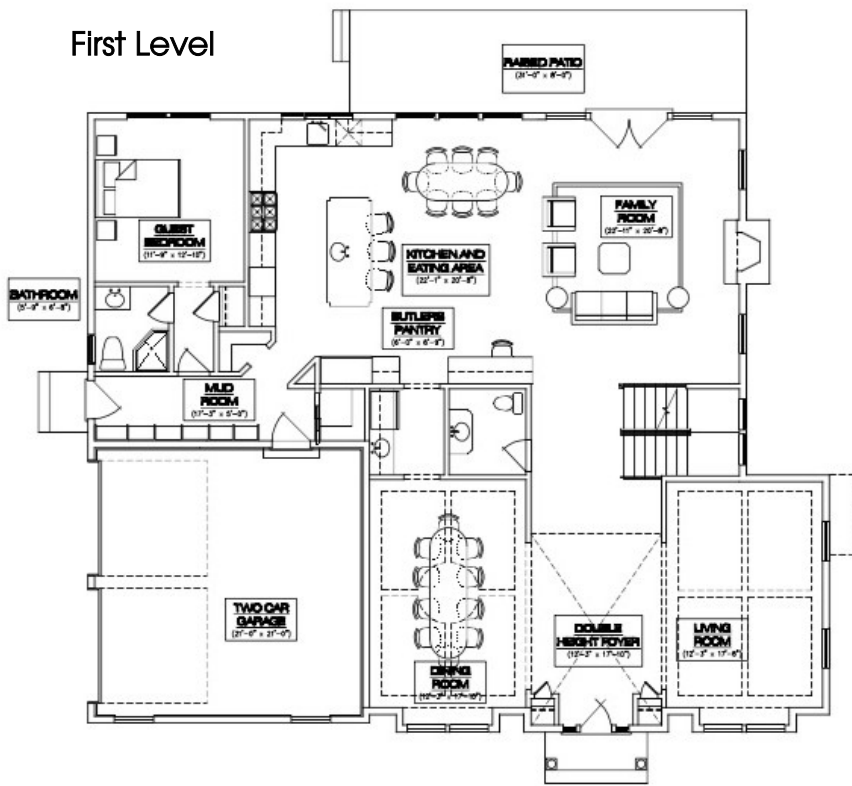
*Sue Adler*  
**KELLER WILLIAMS**  
PREMIER PROPERTIES

**sueadler**   
THE #1 KELLER WILLIAMS TEAM IN NEW JERSEY team

Each Keller Williams office is independently owned and operated.

\*\*Note: Bar will not be built standard but can be an additional add on at buyer expense

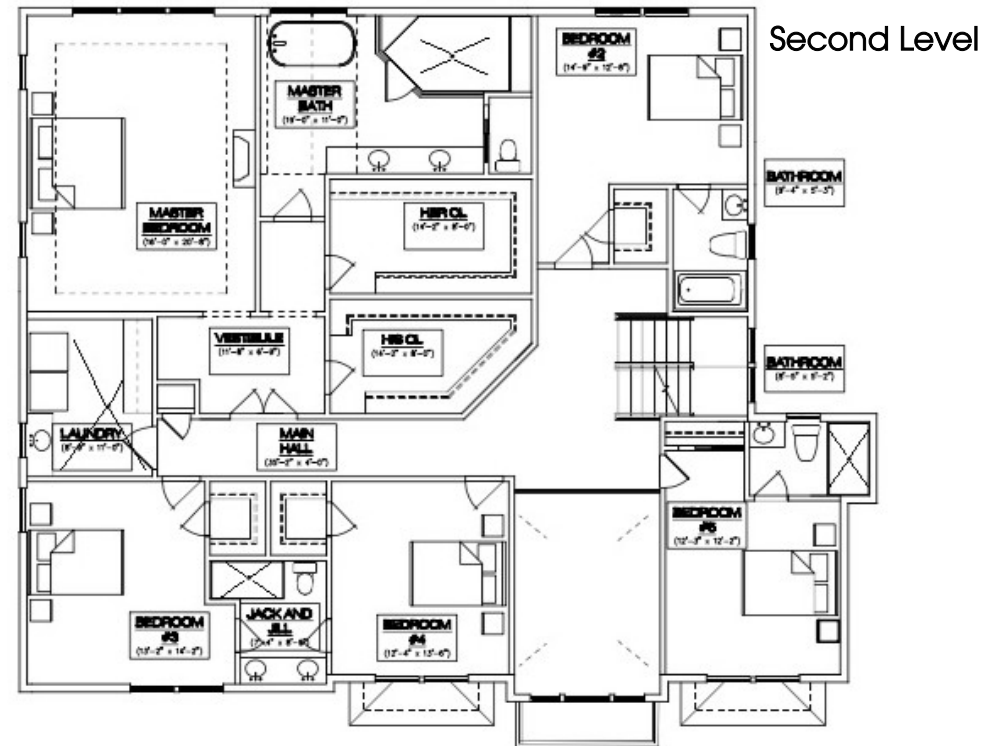
## First Level



## Lower Level

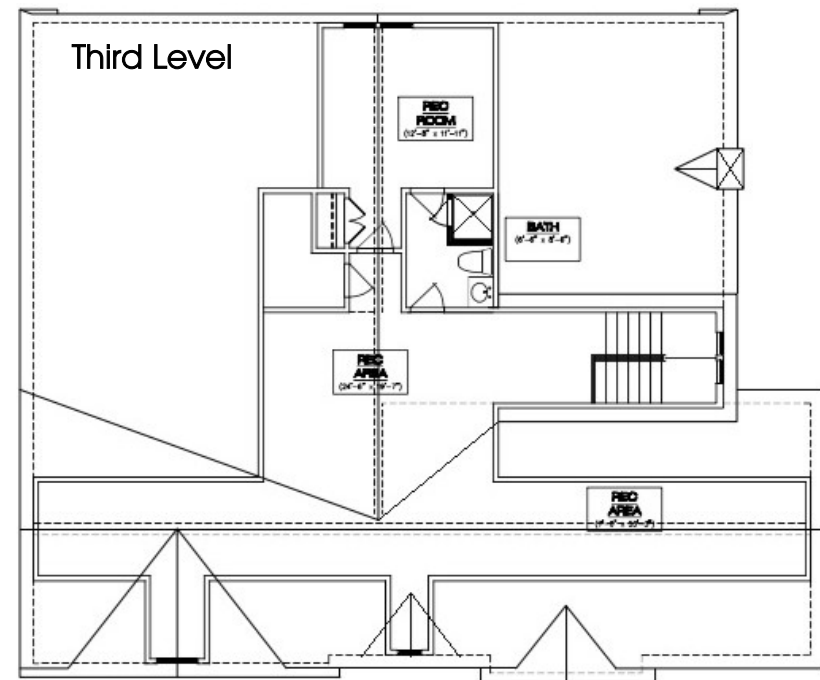
The tree-lined streets of Short Hills are just an inviting prelude to the home at 41 Spenser Drive, a rare new construction opportunity designed by Thomas Baio and built by Durso Construction in the sought after Poet section of town. A short walk up the bluestone path and through the wooden door with decorative sidelights leads you into the welcoming 2-story Entry Foyer and your first glimpse of all this home has to offer. Light streams into the Living Room found through a broad archway just to the right. The room features warm hued hardwood floors, a coffered ceiling and large windows. It's a truly refined setting for intimate conversation with friends or festive holiday celebrations alike. Continue on into the neighboring Dining Room where large front facing windows, coffered ceiling and attractive crown moldings set the perfect tone for formal entertaining. Here, guests will dine in style as they savor gourmet creations prepared in the chef's dream Kitchen found just beyond the adjacent Butler's Pantry. You're sure to be wowed as you step into the open and airy Kitchen that is central to the first level open floor plan. Equipped with top-of-the-line stainless appliances and custom cabinetry accented by granite countertops, this is the perfect setup for preparing a quick snack to enjoy at the center island Breakfast Bar, or a casual meal in the adjacent dining area. Sliding doors lead to an outdoor stone patio that's perfect for al fresco entertaining beneath a canopy of mature trees found in the private backyard. After dining, relax in the open Family Room featuring hardwood floors, plenty of windows and a large gas fireplace as its central focal point. A private Guest Room with en suite bath, Mud Room fully equipped with custom cubbies and a conveniently located Powder Room complete the first level living space.

When it's time to retire for the night, the stately staircase will lead you to the second floor Gallery Landing, 5 spacious bedrooms and 4 full baths. Luxury surrounds you in the Master Suite as light streams through large windows by day, and flickering flames from the gas fireplace are sure to calm at night. The suite is impeccably designed with enormous His & Hers walk-in closets accessible through an elegant vestibule. An en suite spa-like marble bath is the perfect place to unwind at the end of the day as you get comfortable in the large soaking tub that sits majestically beneath large windows facing the backyard greenery. Four additional bedrooms (2 with private en suite baths, 2 that share a Jack and Jill bath) have plenty of closet space and flexibility for family and guest use. A fully equipped Laundry Room rounds out the second level living space. Continue on to the sunny 3<sup>rd</sup> level where an additional bedroom with en-suite bath and flexible Bonus Area provides multiple options for use as you see fit.



And there's more... a fully finished lower level is home to a spacious Recreation Room that provides plenty of space for day and night fun, while an expansive additional room can easily be used as a Media Room to host movie nights or even as Exercise Room – whatever your needs, this home can accommodate them. An additional bedroom with full en-suite bath assures ample options for your family's changing needs.

41 Spenser Drive boasts an extremely flexible floor plan, generous interior spaces, a prime location and a pretty setting together in one fabulous package...it's the perfect place to call home. Easy access Blue Ribbon schools, NYC transportation, and world class shopping and restaurants are just icing on the cake!





RIGHT ELEVATION



REAR ELEVATION



FRONT ELEVATION



LEFT ELEVATION

## First Level

- Double height Entry Foyer with mahogany stained custom wood door with custom glass sidelights, custom wood moldings, hardwood floor, coffered ceiling; broad archways to Living Room, Dining Room and access to Powder Room and staircase with decorative railings
- Living Room with hardwood floors, coffered ceiling, recessed lighting, large windows
- Dining Room with hardwood floors, coffered ceiling, recessed lighting, large picture window; access to Butler's Pantry
- Butler's Pantry with sink and custom cabinetry and access to Dining Room from Kitchen
- Kitchen with custom designer cabinetry with stone countertops, professional grade stainless steel appliances including 48" Subzero refrigerator/freezer, Wolf gas range top with double oven below, Bosch dishwasher, Sharp microwave drawer, Marvel wine refrigerator and Marvel beverage center, center island with stone top, utility sink, and breakfast bar open to dining area with large windowed wall with sliders to raised stone patio; open to Family Room and access to Guest Suite and Mud Room
- Family Room with hardwood floors, gas fireplace with mantel and surround, sliding doors to patio; open to Kitchen
- Guest Bedroom with hardwood floors, crown molding and closet with shelf and pole with en suite bath featuring corner stall shower, vanity with stone top, mirror and tile floors
- Powder Room with vanity with stone top, mirror and tile floors
- Mud Room with tile floors, custom cubbies; side door and access to garage

## Second Level

- Gallery Landing with hardwood floors, crown moldings, access to Bedrooms and Laundry Room
- Master Bedroom Suite featuring hardwood floors, crown molding, tray ceiling, gas fireplace with mantel and surround, windows with two exposures, entry vestibule with access to 2 large walk-in closets with custom shelving and en suite marble bath with steam shower with frameless enclosure, multi-showerheads and built in bench and soaking tub
- Bedroom #2 with hardwood floors, crown molding, walk-in closet with shelf and pole and en suite bath with tile floors, vanity with storage below, mirror and shower over tub
- Bedroom #3 with hardwood floors, crown molding, walk-in closet, en suite Jack & Jill bath (shared with Bedroom #4) with tile floors, 2 sink vanity with storage below, mirror and shower over tub
- Bedroom #4 with hardwood floors, crown molding, walk-in closet, en suite Jack & Jill bath (shared with Bedroom #3)
- Bedroom #5 with hardwood floors, crown molding, double wide closet with shelf and rod and en-suite bath with tile floor, stall shower, vanity with storage below and mirror
- Laundry Room with tile floors, washer, dryer, built-in storage cabinets and utility sink

## Third Level

- Bedroom #6 with carpet, window, double closet with shelf and pole and crown molding and en-suite bath with tile floors, stall shower, vanity with storage below and mirror
- Bonus Area with carpet and dormer windows and access to Bedroom #6 en-suite bath

## Lower Level

- Recreation Room with carpet, storage closet, built in bar and access to full bath
- Bedroom #7 with carpet, window, crown molding, closet with shelf and pole and en-suite bath with tile floor, vanity with storage below, mirror and stall shower
- Media Room/Exercise Room with carpet, storage closet and access to Mechanical Room
- Mechanical Room

## Additional Features

- 2-car garage with electric door
- Multi-zone state of the art gas fired heating and cooling
- 10' ceilings throughout first level; 9' ceilings on second level
- 3" hardwood floors throughout first and second levels
- Crown molding in all Bedrooms and Hallways and base molding in all Bedrooms and all windows, doors and openings with detailed oversized casings and moldings
- Moen and Grohe plumbing fixtures in all bathrooms
- Recessed lighting throughout
- Pella simulated divided light windows throughout
- Professionally landscaped property with brick paver walkways, brick paver patio with direct gas line for barbeque, automatic underground irrigation system for lawn and planting beds, privacy trees surrounding the back of property
- Classic stone, cedar shakes and Hardi-Plank exterior
- Prewired for stereo system throughout Lower Level, First Level, Master Suite and Exterior
- Alarm System and pre-wired for a smart house system

*Sue Adler*  
**KELLER WILLIAMS**  
 PREMIER PROPERTIES



Cell: (973) 975-0197  
 Office: (973) 376-0033 x101  
 Sue@sueadler.com  
 www.sueadler.com/41Spenser