

61 Fuller Avenue

Chatham, New Jersey



Sue Adler
KELLER WILLIAMS
PREMIER PROPERTIES

sueadler 
THE #1 KELLER WILLIAMS TEAM IN NEW JERSEY team

Each Keller Williams office is independently owned and operated.



Warm and welcoming Center Hall Colonial on one of the most sought after residential streets in Chatham Boro, 61 Fuller is the perfect place to call home! As you enter through the front door, you'll notice the charm and character immediately, from the pebble stone flooring in the entry foyer to the warm hardwood floors in the living areas, dentil and baseboard moldings and center staircase, bright and sunny interior spaces – all the things that make a house feel like a home. The Living Room is flooded with sunshine streaming through the large picture window, and the fireplace with wood mantel, brick surround and slate hearth create the room's focal point. French doors lead to a Sunroom, a wonderful transition space between indoors and outdoors – a great place to enjoy coffee and your favorite show on the mounted television and still enjoy the views of the yard. Sliders to the deck lead to the back yard, complete with paved asphalt area, a patio, lush lawn, and children's play set nestled within a built-in gravel base.

Back inside, the charm continues in the Dining Room, courtesy of the moldings, hardwood floor and built-in glass-paned china cabinet. A French door leads to Kitchen where meal prep is a snap thanks to the full suite of GE Profile appliances. Serving your friends and family a casual meal or snacks is a delight at the breakfast bar situated under hanging light fixtures and topped with granite countertops. Privacy for work or homework can be found in the Office, with wood paneled walls and built-in bookshelf. A full bath with glass stall shower completes the first floor.



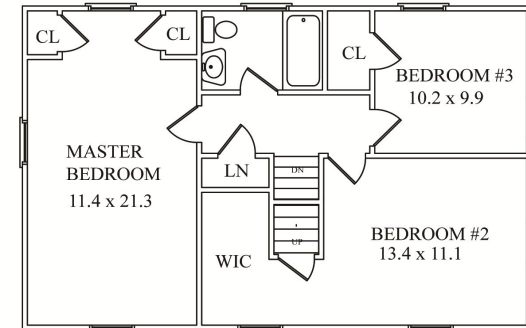
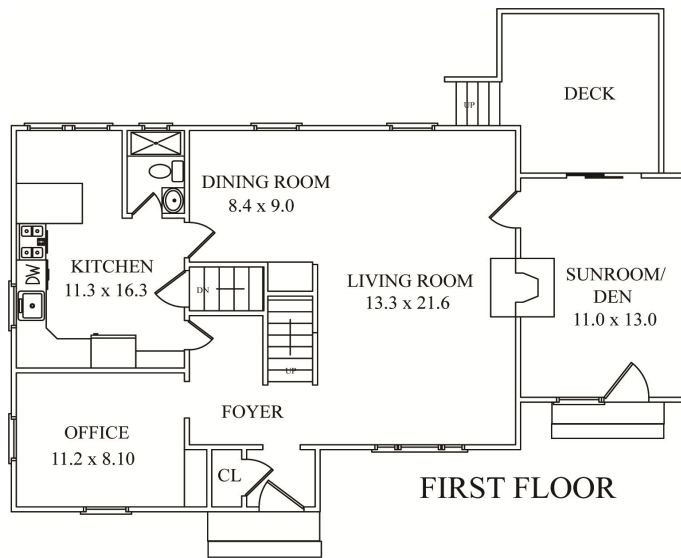
Upstairs you'll find three Bedrooms, including the Master, which features hardwood floor, base and crown molding, walk-in closet with built-ins and access to the attic via full staircase. Additional Bedrooms offer crown and base molding and plenty of storage in multiple closets with built-ins. The full Hall Bathroom has a shower over tub, charming pedestal sink with storage below, tile floors, and additional storage can be found in the 2nd floor landing linen closet. A Recreation Area, Laundry Area with utility sink and door to the rear yard, and a storage area can be found in the home's Lower Level.

This move-in ready home, situated on a Chatham cul-de-sac, has great interior spaces and beautiful curb appeal, with a deep front yard and mature plantings - truly your next "home sweet home."

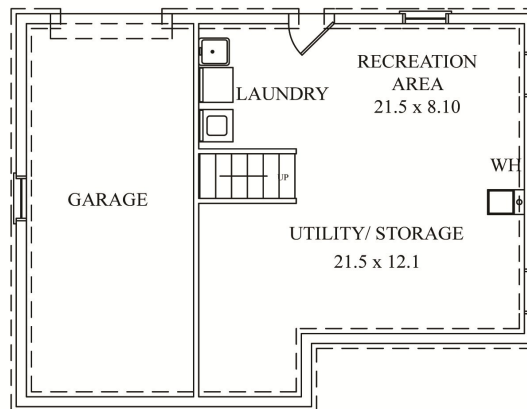
Inside and Out...

First Level

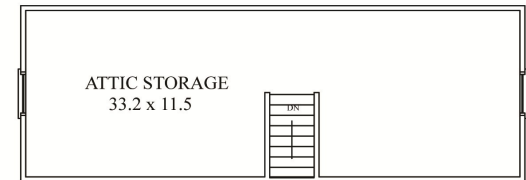
- Entry Vestibule with shelved closet, light fixture, mosaic pebble stone floor
- Center staircase with runner, crystal light fixture, hardwood floor, dentil molding, baseboard molding
- Living Room with hardwood floor, oversized picture window with two double hungs, mounted TV, dentil molding, baseboard molding, fireplace with wood mantel, brick surround and slate hearth, French door to sunroom
- Sunroom with decorative brick wall, sliders to rear deck, French doors to front of the house, 4 side by side windows, recessed lightning, hardwood floor, baseboard molding, mounted TV and speakers, built in wall speakers
- Dining Room with hardwood floor, baseboard molding, dentil molding, 2 windows, built in glass paned china cabinet, two hanging light fixtures, French door to kitchen
- Kitchen with light fixture, tile floor, granite counters, GE Profile electric oven/stovetop, GE Profile refrigerator, GE Profile dishwasher, GE Profile microwave, sink with window above and light fixture overhead, cabinets with under lighting, built in pantry, breakfast bar hanging lights fixture with seating for 4, 2 windows, door to Basement
- Full Bathroom with tile floor, glass stall shower with light fixture and tiled walls, vanity with storage below, mirror with storage and light above,
- Office with hardwood floor, wood paneled walls, track lighting, 2 windows, built in bookshelf



SECOND FLOOR



LOWER LEVEL



THIRD FLOOR

NOT TO SCALE - This floor plan is provided for illustration purposes only. Room positions and dimensions are approximate and should be independently measured for accuracy.

Second Level

- 2nd level landing with linen closet, light fixture and hardwood under carpet
- Master with (access to the attic via full stairs to walk out attic with light fixtures) walk in closet with built ins and track lighting, hardwood floor, baseboard molding, crown molding, 3 windows, ceiling fan with light
- Bedroom #2 with carpet, 3 windows, crown and base molding, 2 closets with built ins
- Bedroom #3 with carpet, light fixture, two windows, closet with built ins, crown and base molding
- Full Hall Bathroom with shower over tub with subway tile and mosaic detail, tile floor, light fixture overhead, window, pedestal sink with storage below, mirror with light fixture above, baseboard molding

Lower Level

- Recreation Area with wood-look floor, track lighting
- Laundry Area with utility sink, door to rear
- Storage Area

Additional Features and Upgrades

- Yard with deck, paved asphalt area, patio area, lawn area, children's play set in built-in gravel base
- Sunroom renovation (2007)
- Rear Deck addition (2007)
- 1 car garage
- Cul-de-sac

Sue Adler
KELLER WILLIAMS
 PREMIER PROPERTIES



Cell: (973) 936-9129
 Office: (973) 376-0033 x101
 Sue@sueadler.com
 www.sueadler.com/61Fuller