

36 Hemlock Road

Short Hills, New Jersey



Sue Adler
KELLER WILLIAMS
PREMIER PROPERTIES

sueadler 
THE #1 KELLER WILLIAMS TEAM IN NEW JERSEY **team**

Each Keller Williams office is independently owned and operated.







This spectacular Short Hills Estate is the epitome of sophistication and style! Situated on 1 1/3 acres, this 8-bedroom home highlights modern living at its finest, both inside and out. Exquisite gardens, gunite pool, lush landscaping, and a patio that spans across the entire back of the home create a private oasis for entertaining or for enjoying your own perfect "staycation." Inside, renowned architects, The Rosen Group, seamlessly renovated the entire house in 2005-2007, with impeccable attention to every detail, masterfully planning for a 21st century lifestyle, including both a study and a garden office. It is evident that the heart of the home is in the open-concept kitchen and family room, with the wonderful use of reclaimed wood in both the flooring and the beamed ceilings. The gourmet cook's kitchen, with two islands, is large enough to host your family and friends with room to spare and the adjacent family room is stunning with its vaulted ceiling and floor-to-ceiling hand-cut focal stone fireplace—the details and special features are endless!

Upon entering through the Mudroom/Foyer with Italian travertine tile flooring and six built-in floor-to-ceiling cubbies, and bench one is drawn in by the warmth, elegance and splendor of the home. The fabulous large open, gourmet eat-in kitchen with the adjacent family room immediately welcomes you and is the true heart of this home. This spectacular bright kitchen features: wide planked, reclaimed chestnut wood floors, two large islands, travertine countertops and 4 inch butcher block, top of the line appliances including 60 inch Wolfe Gas Range, complete with a French cook top and grille, full size refrigerator and freezer, and custom antique leaded glass cupboards and cabinets by Bischoff cabinetry. French doors lead out to the patio with stunning views of the pool and garden with plantings providing privacy from neighboring homes.

The kitchen opens to an amazing Family Room with antique reclaimed hewn beams that frame the vaulted ceiling and a gas starting wood burning stone fireplace. The warmth from the floors, the distinct color palette, floor to ceiling hand cut stone fireplace, 7 large windows with built-in book shelves dividing the room from the kitchen makes this room radiate with cozy elegance. Another set of French doors also leads to the patio and pool to complete this home's perfect four season entertaining flow. Established towering trees provide privacy for outdoor parties and gatherings.

Leading off from the kitchen, custom built-in antique glass fronted cabinets and a desk have been designed to double as homework stations or as a butlers pantry. The elegant banquet-sized Dining Room boasts original hardwood flooring and windows that frame the views of the formal gardens providing an intimate entertaining space for formal holiday dinners or gatherings with family and friends. Original antique pocket glass doors lead to the foyer and are matched by a pair that leads to the formal Living Room.

The Living Room features original hardwood flooring, another gas burning fireplace, original windows overlooking the patio, and original French doors that lead to the Study. The cozy study/library emanates warmth from its' southern exposure, the limestone radiant tile floor, gas fireplace with honed black marble, and handsome custom mahogany built-in shelves and desk making for the perfect home office or idyllic setting for the studious school child. The glass door conveniently leads to the outdoor fireplace. Also leading from the foyer is the Sunroom with its large original windows and double French doors opening to the bluestone patio and original formal English gardens. Enjoy a picturesque snowfall curled up with a book or open the doors on a beautiful spring or summer day. Two powder rooms complete this first level.





The flawless fluency of the first floor transmits to the second level by way of two stately staircases. Unlimited charm and allure transpire from room to room, including four completely renovated baths showcasing the highest quality in design and fixtures. The Master Suite has an entry foyer, a decorative fireplace and French doors to a balcony creating a romantic and graceful setting. The Master Bath is luxurious--rejuvenate in the soaking tub while watching a favorite program on the mirrored television or steam in the steam shower, then step out onto the warmth of the radiant honed marble tile floor. Guests will embrace a few nights snug in a guest bedroom with a decorative fireplace and perfectly appointed en-suite bathroom. Four additional bedrooms with built-in desks, shelves, storage and, custom closets, benefit from unique charm and features; one has a two story loft area, two share a secret passageway between closets and one has a trap ceiling door, to add fun and whimsy for the children and teens. The six bedrooms on the second level floor are truly a unique attribute of the home offering the rare opportunity for a large family to share sleeping quarters all on one floor.

The distinctiveness of this home continues to a Third Level that separates into two wings. The Left Wing is designed with a Loft continuing for the open second floor's fourth bedroom. In addition a two room playroom with built-in shelving for books and toys provides a cozy escape for children and teen. This floor also offers storage attic space. The Right Wing encompasses two additional bedrooms and a full bath with an original claw-foot tub with shower.

The Lower Level provides all day and night family entertainment and fun. Get in a workout on a stationary bike or treadmill or have a game of pool while relishing in a movie on the 110-inch retractable movie screen. The 10-foot ceiling Recreation Room complete with laminate wood and stone tile floor with stairs that lead up to the pool and windows make this basement feel magical. Your budding musician can bang away on that drum set or strum their guitar in the Music Room with sound absorbing walls and materials. And for the more artistic members in the family, enjoy endless hours of creativity in the carpeted Crafts Room. A full bath, plenty of storage space and a walk-in storage/wine room complete the Lower Level.

With breathtaking grounds, stunning architecture and impeccable finishes throughout, 36 Hemlock Road is a private retreat in the midst of world class amenities and Blue Ribbon Schools, a one-of-a-kind dream home that is nothing short of perfection!







Inside and Out...

First Level

- Mudroom entry has Italian travertine tile, built-in bench and 6 built-in floor-to-ceiling cubbies
- Powder room has basket weave pattern tile floor, waterworks commode, and custom console by Bischoff Cabinetry
- Family room with reclaimed wide plank chestnut wood floors, vaulted ceiling with antique reclaimed hewn beams, gas starting wood burning floor to ceiling stone fireplace, double French doors out to patio pool and spa (open to kitchen)
- Magnificent gourmet kitchen with two oversized islands-Italian travertine countertop and island top with built in 4-in butcher block, Bischoff Cabinetry throughout provides beautiful storage, including antique leaded glass fronted upper cabinets, 2 sinks – 1 farm sink with barber Wilson gooseneck faucet, 1 oversized stainless steel sink, 2 Miele dishwashers, 60 inch wolf gas range with French cook top, grill and 4 burners, warming drawer, side by side Monogram refrigerator and freezer, beverage refrigerator and high capacity clean ice maker. Two double French doors to patio, pool and spa, large pantry, and pull outs over stove to storage and convenience for cooking
- Dining room with original hardwood floor, gas fireplace, pocket doors with views to formal garden
- Living room with chestnut hardwood floor, wood fireplace and original pocket doors to foyer
- Study with limestone radiant tile floor, gas fireplace, mahogany built-ins, trim crown molding, custom Pella windows, banquet seating, French door to bluestone patio
- Sunroom with original hardwood floor, crown molding and original windows and double French doors to bluestone patio and garden
- Foyer, original hardwood floors, original 2-inch thick glass pocket doors
- Powder Room, with corner sink, chestnut wide plank reclaimed hardwood floor
- Attached oversized 2 car garage with oversized sink and heater

Second Level

- Master Bedroom suite with entry foyer, hardwood floor, decorative fireplace, crown molding, French doors out to balcony
- Master Bathroom with radiant honed marble floor, Bischoff cabinetry, mirrored television, steam shower, soaking tub, double vanity custom made by Bischoff Cabinetry, 2 custom mahogany walk-in closets, Toto commode windows overlooking formal English garden
- Bedroom 2 with hardwood floor, decorative fireplace, crown molding, en-suite bathroom with waterworks basket weave pattern tile floor, waterworks tiles, stall shower with rain head, waterworks console and faucet, waterworks commode
- Laundry room with tile floor, crown molding, 2 front loading high efficiency washer and dryers, sink, shelves and cabinets

- Bedroom 3 with hardwood floor, crown molding, built-in shelving unit and walk-in custom closet, en-suite (Jack and Jill) bath with tile floor, Bischoff vanity with double sinks and shower over tub, waterworks commode
- Bedroom 4 with hardwood floor, vaulted ceiling with loft, built in shelf and desk, 2 closets
- Bathroom with waterworks mosaic tile floor, stall shower, Bischoff built-in cabinetry, waterworks oversized sink and faucet
- Bedroom 5 with hardwood floor, built-in bed with under bed storage, shelves and custom walk-in closet
- Bedroom 6 with hardwood floor, crown molding, built-in desk, storage and shelves, custom walk-in closet

Third Level (Left Wing)

- Playroom with built-in shelving units
- Loft
- Attic storage space

Third Level (Right Wing)

- Bedroom 7 with hardwood floor and built-in drawers
- Bedroom 8 with hardwood floor and closet
- Bathroom with tile floor and original claw foot tub with shower

Lower Level

- Recreation room with laminate wood and stone tile floor, 10 ft. ceiling, 110 inch movie screen and projector
- Bathroom with stone tile floor and stall shower
- Crafts room with carpet
- Music room with sound absorbing walls and materials
- Walk-in closet/wine storage with 210 amp outlet
- Storage room/utility rooms /Mechanical room (3)

Additional Features and Updates

- Linfield house originally built in 1904
- Renovated 2005-2007
- Architect: The Rosen Group
- Builder: Barnes Construction
- Outdoor fireplace
- Gas line with BBQ
- Bluestone patio
- In-ground dark bottom gunite pool and spa with stamped concrete patio (renovated 2006).
- Pool shed (stores pool plumbing and filtration), wired for laqua link mobile pool controller, 2 changing rooms
- New bathrooms (6 full 2.5)
- New electrical
- New plumbing
- Converted porte-cochere (large side porch)
- Oversized Two-car attached heated garage with potting sink (zone for 4 car-already passed variance process)

Additional Features and Updates continued

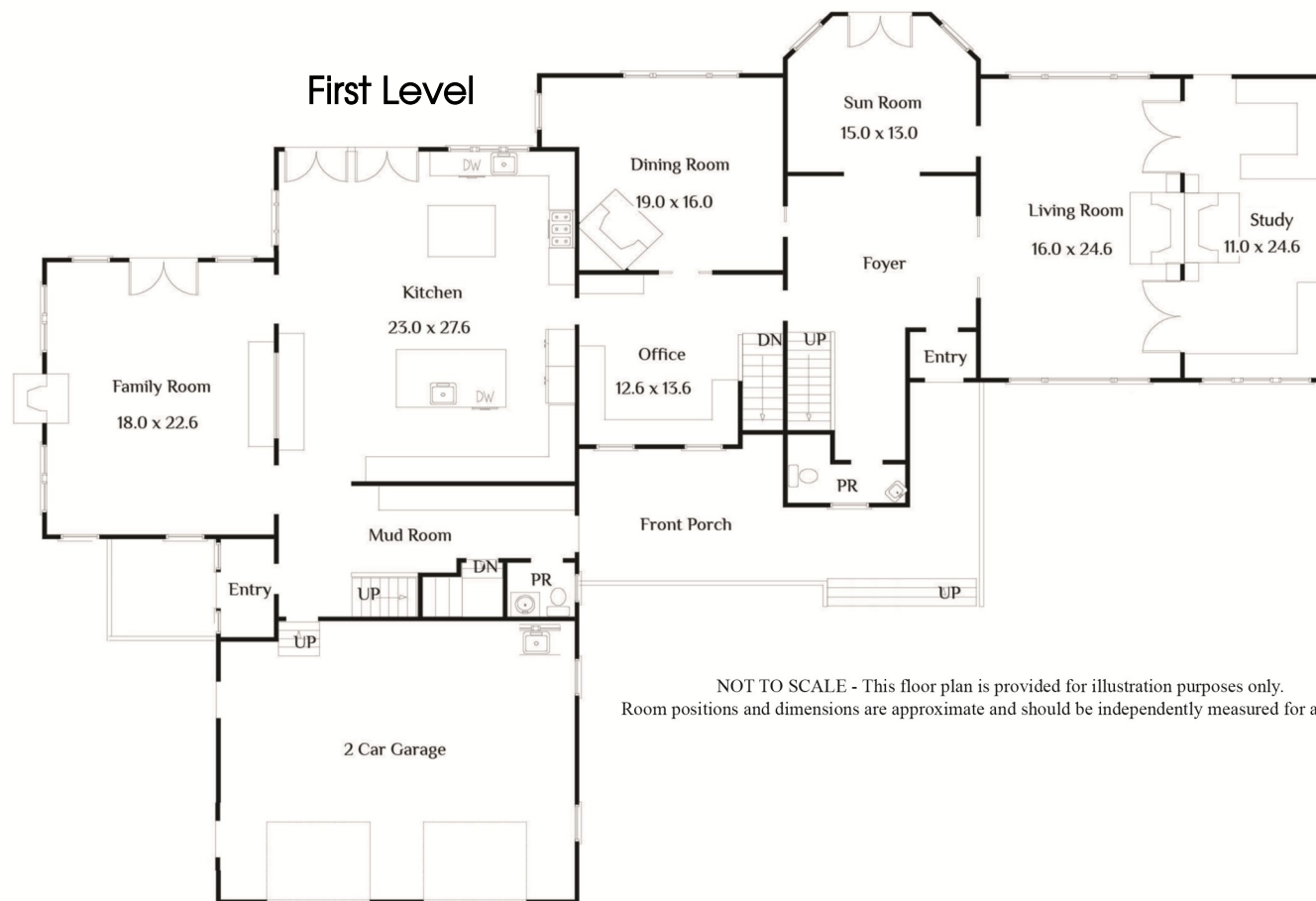
- Lutron lighting system
- Crestron Electronic system for television and sound system
- 100 amps Kohler generator
- Whole house water filtration system (EWS)
- Steel reinforced lower level
- Two water heaters
- Two furnaces
- 2 A/C systems
- Security system with hardwired fire system
- Curved stone walls built by Strecker landscaping
- 2 sump pumps, French drains leading to 4 dry wells
- All utility wires underground



Second Level

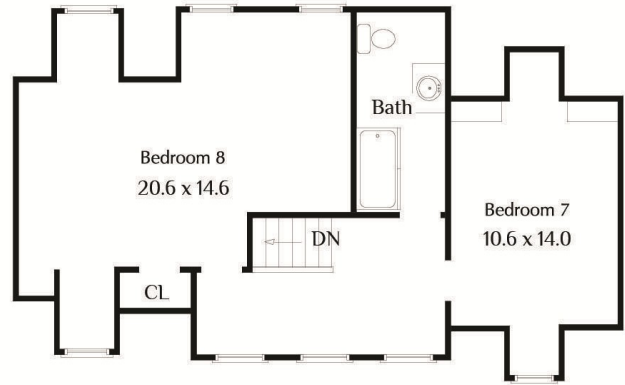
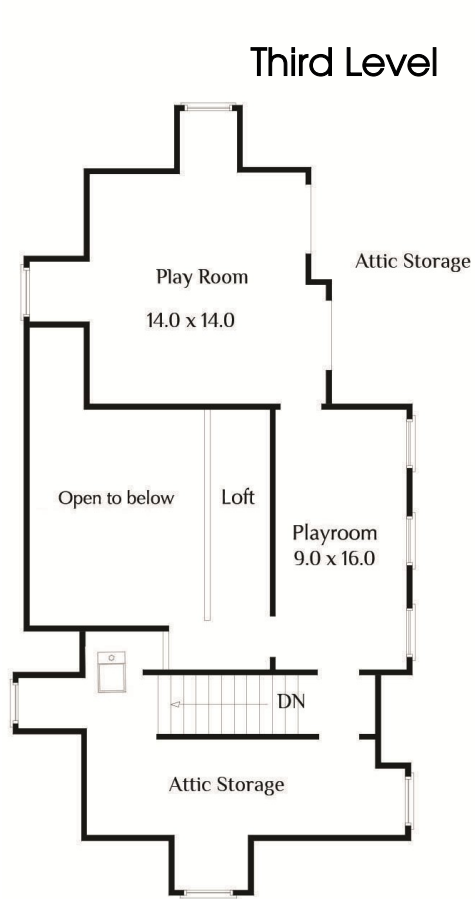


First Level



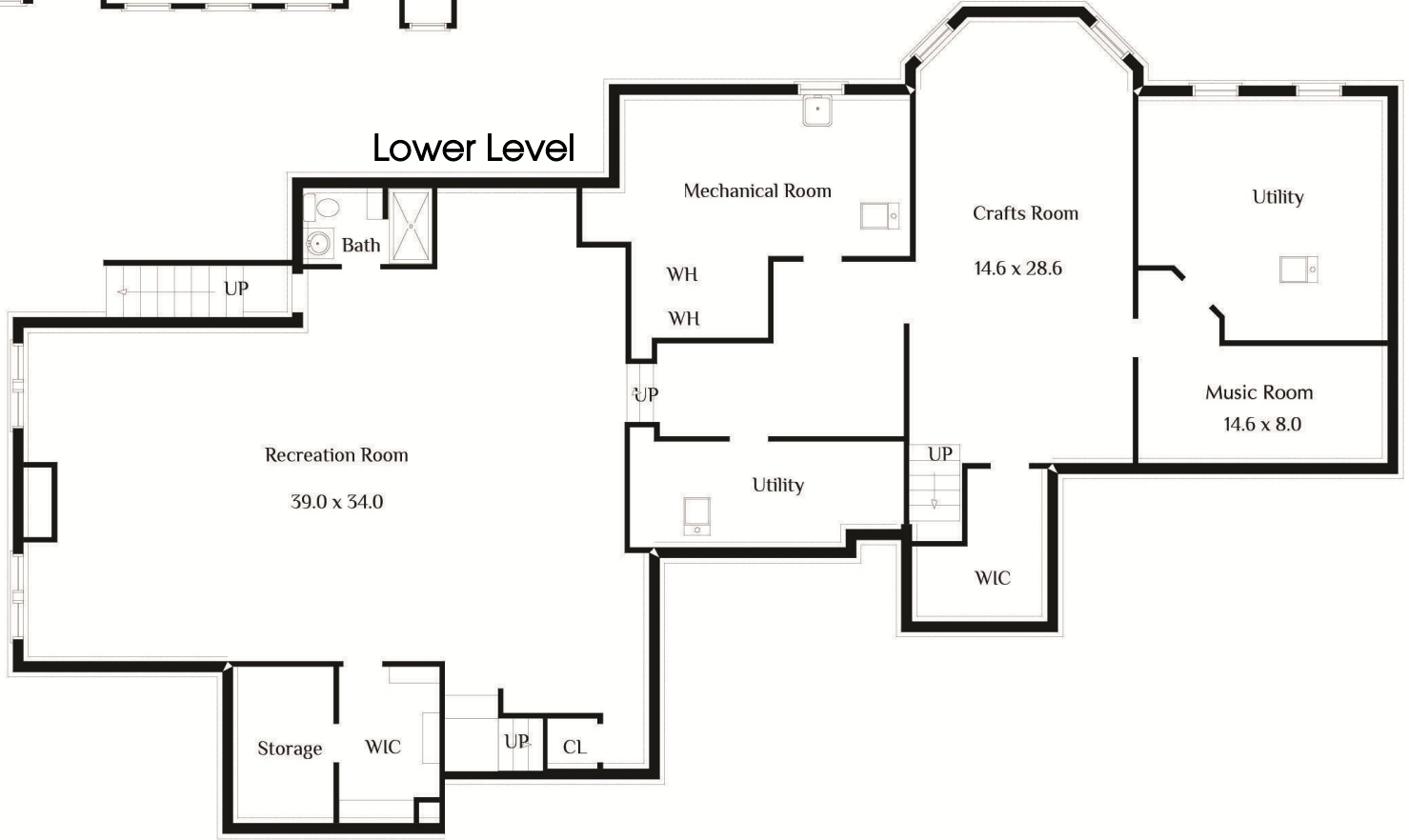
NOT TO SCALE - This floor plan is provided for illustration purposes only.
Room positions and dimensions are approximate and should be independently measured for accuracy.

Third Level



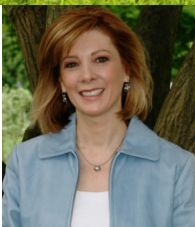
NOT TO SCALE - This floor plan is provided for illustration purposes only.
Room positions and dimensions are approximate and should be independently measured for accuracy.

Lower Level





Sue Adler
KELLER WILLIAMS
PREMIER PROPERTIES



Cell: (973) 936-9129
Office: (973) 376-0033 x101
Sue@sueadler.com
www.sueadler.com/36Hemlock

sueadler 
THE #1 KELLER WILLIAMS TEAM IN NEW JERSEY **team**