

11 Hillview Terrace

Summit, New Jersey



Sue Adler
KELLER WILLIAMS
PREMIER PROPERTIES

sueadler 
THE #1 KELLER WILLIAMS TEAM IN NEW JERSEY team

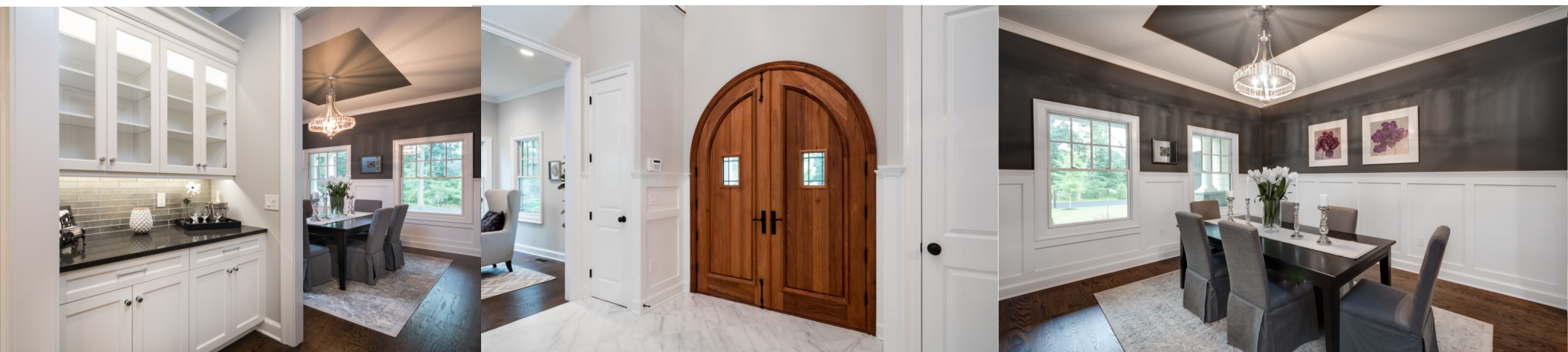
Each Keller Williams office is independently owned and operated.





Welcome to 11 Hillview Terrace! This stunning Brand New 6 Bedroom, 6 Full and 2 Half Bath Custom Colonial (over 6000 square feet) is a vision of ideal beauty and craftsmanship. Situated on an ultra private cul-de-sac in sought after Summit, near downtown restaurants, shopping and Midtown Direct train, 11 Hillview Terrace aims to please!

Stroll up the bluestone walkway to the dramatic gothic-style wood doors framed by an idyllic, relaxed front porch perfect for cocktails and relaxation with family and friends. Enter the spacious 2-story Entry Foyer and prepare to be overwhelmed by the sheer elegance of this home. With gleaming marble floors, 10-foot ceilings, custom moldings and an open floor plan, the First Level is the consummate example of high design and function. The 2-story Entry Foyer includes immense natural light, 2 coat closets, incredible custom craftsmanship and lovely views of the Living Room, Dining Room and elegant staircase. Beauty abounds in the gracious Living Room adorned with elegant custom moldings and a beautiful view of the outdoors. Dinner parties are a dream in the magnificent Dining Room featuring a custom ceiling, soothing paint colors and elegant wainscoting. Mix drinks and select your favorite wine in the adjacent Butler's Pantry and Wine Room. The Dining Room connects easily to the outstanding Gourmet Chef's Kitchen that will satisfy any top chef. Crisp white custom wood cabinetry with gorgeous custom island, marble countertops, stainless steel professional grade appliances and designer lighting make the Kitchen outstanding. A walk-in pantry just outside the kitchen, with floor to ceiling shelving, provides tons of additional storage space. Take in the backyard view in the Breakfast Area with double French sliding doors out to a roomy bluestone patio perfect for al fresco dining or just spending time with friends. Flow easily into the impressive Family Room featuring a gas-burning fireplace with beautiful millwork and marble surround, coffered ceiling and gorgeous windows with views of the lush backyard. Your guests will love to stay in the first floor's Guest Bedroom Suite with a luxurious ensuite bathroom featuring lovely tile and custom vanity. A chic Powder Room with designer tile and roomy Mudroom with custom cabinetry round out the first level.





When it's time to retire for the evening, the majestic staircase leads you to the second floor with four spacious bedrooms (each with its own bath). Luxury abounds in the enormous Master Bedroom Suite drenched in sunlight and with graceful sitting room perfect for cuddling up with a book at the end of a long day. The Master Suite is functionally designed with generous dual walk-in closets with custom shelving, drawers and hanging storage and a spa-like Master Bathroom complete with a striking soaking tub, marble tiling and enormous custom dual vanity with quartz countertop. Three additional large bedrooms with bathrooms are steeped in sunlight and include generous closets. Each has their own luxurious ensuite bath with the finest in finishes like quartz countertops, designer tile and rain shower fixtures. Finally, laundry is a snap in the 2nd floor Laundry Room with its own custom built-in cabinetry and sink.

And there's more...The Lower Level boasts a massive Recreation Room, children's arts and crafts area, convenient Powder Room and Gym area. Whether it's movie watching, card games or children's art projects, the Lower Level provides tremendous additional space. An immensely private Au Pair or Guest Suite, with a chic Full Bathroom and walk-in closet, rounds out this Lower Level.

11 Hillview Terrace is the perfect custom home in one of Summit's most prestigious neighborhoods. Just minutes from Blue Ribbon schools, NYC transportation, downtown Summit shopping and restaurants, this home must be seen to be believed!





Inside and Out...

First Level

- Front Porch featuring bluestone flooring, bead board ceiling, recessed lighting, stonework at base of house and pillars
- Warm and welcoming gothic style double wood doors
- 2-story Entry Foyer featuring marble floor tiles, baseboard molding, crown molding, wainscoting, 2 coat closets, antique finish chandelier with crystals, curved staircase to 2nd Level
- Living Room featuring hardwood floors, baseboard molding, crown molding, recessed lighting
- Dining Room featuring hardwood floors, wainscoting, crown molding, chandelier with antique silver finish and crystal detail, painted inset ceiling
- Gourmet Chef’s Kitchen featuring hardwood floors, baseboard molding, custom white wood cabinetry, glass door cabinets with custom lighting, subway tile backsplash, marble and granite countertops, island with seating for 3, recessed lighting, designer pendant lighting over island, Miele dishwasher, stainless Wolf 48” range, stainless Wolf wall oven and microwave, stainless 48” Subzero refrigerator/freezer, 2 U-Line stainless refrigerator drawers
- Breakfast Area with pendant light fixture with drum shade, double French sliding doors out to patio area
- Butler’s Pantry featuring hardwood flooring, recessed lighting, custom cabinetry, glass door cabinetry for china and bar glass storage, subway tile backsplash with silver detail, granite countertops
- Wine Room featuring custom built-in wine storage, rustic flush mount light fixture, hardwood floors
- Family Room featuring hardwood floors, baseboard molding, coffered ceiling, recessed lighting, fireplace with custom millwork and marble surround, painted soothing grey with darker grey accent wall, double sliding French doors to bluestone patio area
- Mud Room featuring slate tile flooring, closet, crown molding, baseboard molding, doorway to garage, custom built-in with bead board detail and hanging storage, flush mount light fixture with drum shade
- Walk-in pantry off Mud Room featuring floor to ceiling shelving, recessed lighting, slate tile flooring
- Powder Room featuring geometric designer tile flooring, marble subway tile wainscoting, custom wood vanity with quartz countertop, 2 light sconce, wood framed mirror, flush mount light fixture with drum shade
- 3 car garage with carriage style electric doors, epoxy flooring, door to outdoors
- Ensuite Bedroom #5 featuring hardwood floors, baseboard molding, crown molding, closet, recessed lighting, flush mount light fixture, ensuite full bath with marble floor tile with mosaic accent, shower over tub with subway tile and mosaic tile surround, hand held shower, flush mount light fixture, custom wood vanity with quartz countertop, custom mirror, 2 light sconce over mirror

Second Level

- Laundry Room featuring laundry hookup, tile flooring, custom built-in cabinetry with sink, recessed lighting
- Master Bedroom and Sitting Room featuring hardwood floors, tray ceiling, baseboard molding, crown molding, light fixture with drum shade, recessed lighting, dual walk-in closets with custom adjustable shelving, drawers and storage
- Master Bathroom featuring double entry doors, modern rectangular soaking tub, custom dual vanity with quartz countertop, custom mirrors with 3-light crystal sconces above, recessed lighting, shower with frameless glass door and marble tile surround and seat, rain shower head, marble floor tile, separate area for toilet, linen closet with floor to ceiling shelving
- Ensuite Bedroom #2 featuring hardwood floors, baseboard molding, crown molding, recessed lighting, flush mount light fixture with drum shade, walk-in closet, ensuite Bathroom featuring hexagonal floor tile, custom vanity with quartz countertop, custom mirror with 4 light sconce, flush mount light fixture with drum shade, shower over tub with glass subway tile surround, rain shower head and handheld shower
- Ensuite Bedroom #3 featuring hardwood floors, baseboard molding, crown molding, recessed lighting, flush mount light fixture with drum shade, huge walk-in closet, ensuite Bathroom featuring hexagonal penny floor tile, custom vanity with quartz countertop, custom mirror with 4 light sconce, flush mount light fixture with drum shade, shower over tub with subway tile surround and mosaic accent tile, rain shower head and handheld shower
- Ensuite Bedroom #4 featuring hardwood floors, baseboard molding, crown molding, recessed lighting, flush mount light fixture with drum shade, 2 closets with double doors, ensuite Bathroom featuring marble floor tile, custom vanity with quartz countertop, custom mirror with 4 light sconce, flush mount light fixture with drum shade, shower over tub with subway tile surround and mosaic accent tile, rain shower head and handheld shower, linen closet with floor to ceiling shelving

Lower Level

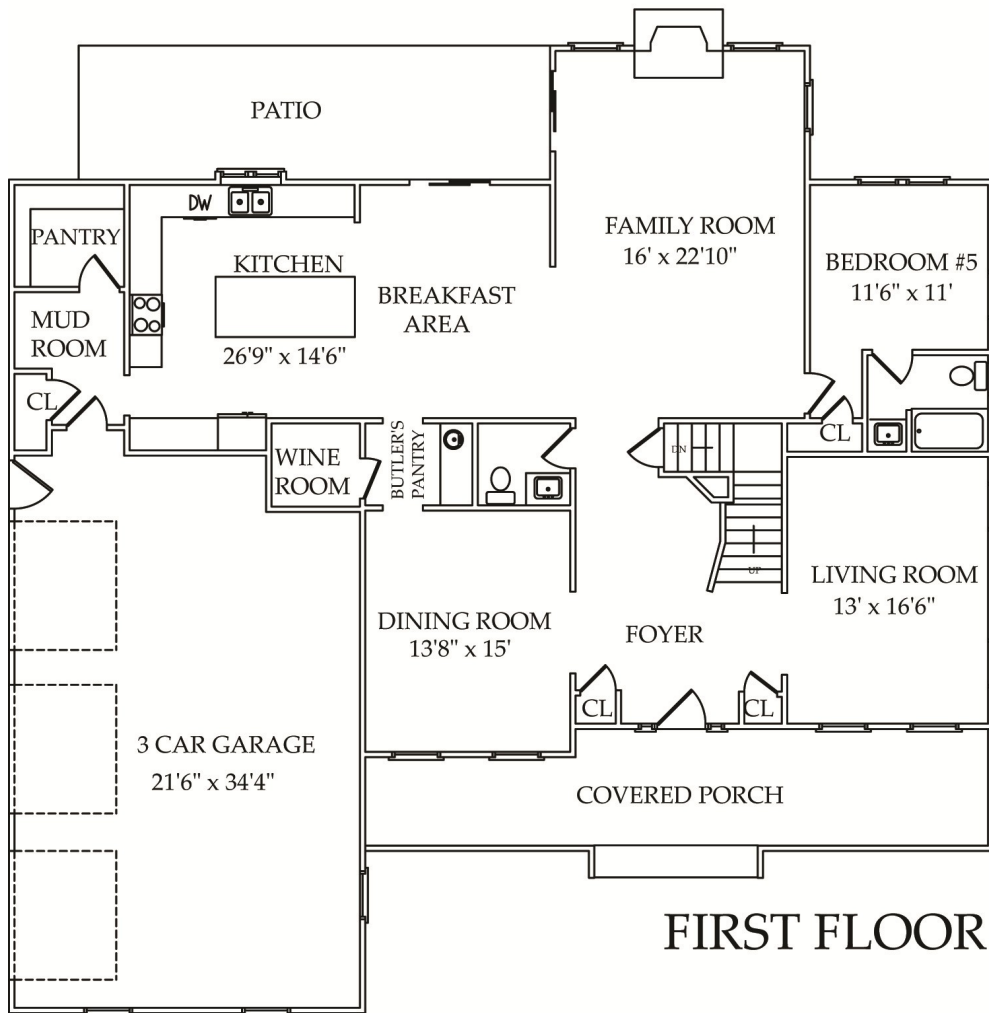
- Recreation Room featuring hardwood floors, baseboard molding, crown molding, recessed lighting, storage closet
- Open Gym Area
- Powder Room featuring tile flooring, tile accent wall, custom wood vanity with quartz countertop, 2 light sconce, flush mount light fixture
- Ensuite Bedroom #6 featuring hardwood floors, baseboard molding, crown molding, flush mount light fixture, walk-in closet, ensuite Bathroom featuring hexagonal penny tile, custom wood vanity with quartz countertop, flush mount light fixture, custom mirror, 2 light sconce, shower over tub with subway tile surround
- Utility/Storage area

Front and Backyard

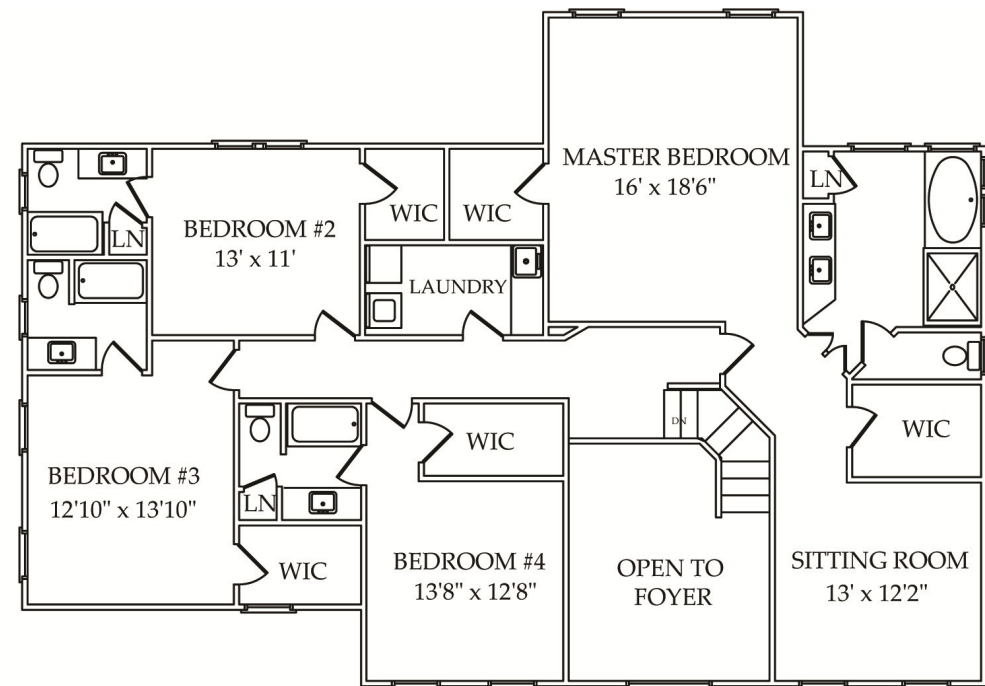
- Bluestone walkway leading to front porch
- Serene view out front of mature specimen trees
- Just under 1/2 acre property
- Flat backyard with professional landscaping with sod, foundation and specimen plantings
- Bluestone patio
- Paved driveway with cobblestone detail
- Irrigation

Additional Features/Upgrades

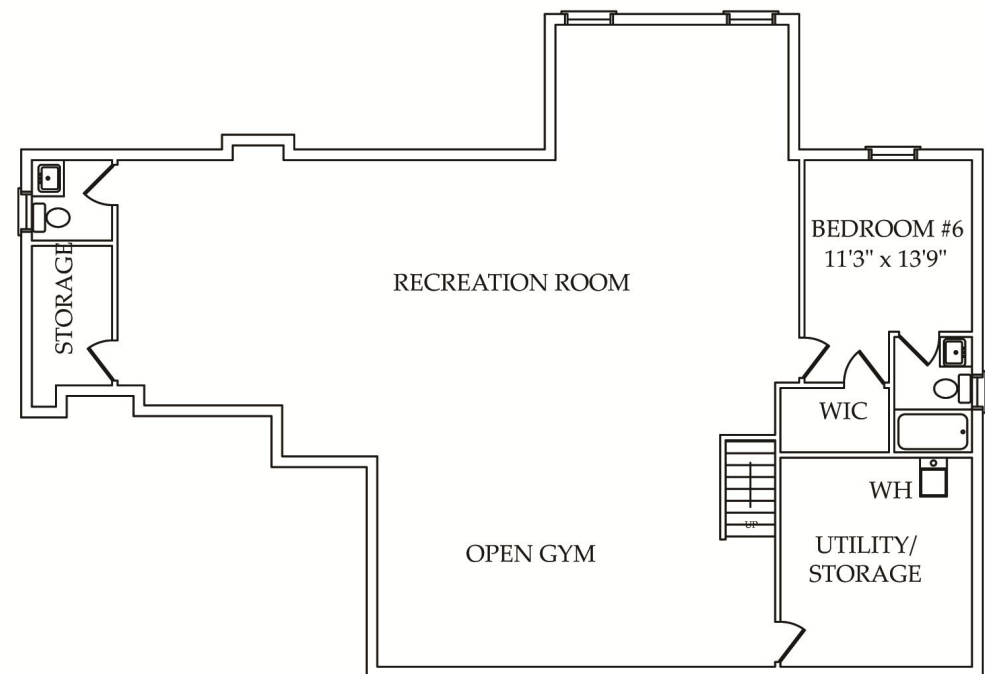
- Built in 2016 by Millennium Custom Homes (recognized as New Jersey’s best home builders by Metropolitan Builder and Contractor Association)
- High ceilings throughout
- Solid core Masonite interior doors throughout
- Rubbed bronze door hardware
- Kohler fixtures throughout
- Hardie Plank siding and shakes
- Cultured stone exterior base
- Architectural metal roof
- GAF 30 year shingle roof
- Pella windows and doors throughout
- Frost free hose bibs front, rear and garage
- LED recessed lighting throughout
- Pre-wired for sound in Living Room, Dining Room, Family Room and Patio
- 300 Amp electrical service, telephone and cable all underground
- Home security system with smoke and carbon monoxide detectors (with battery backup)
- CAT 5 wires and cable wire throughout
- Two 50-gallon high efficiency water heaters with recirculating line
- 4 zone high efficiency forced hot air/AC
- Pre-wired for 20Kw generator
- Central vacuum system
- Sump pump
- Digital clock thermostats



FIRST FLOOR



SECOND FLOOR



LOWER LEVEL

NOT TO SCALE - This floor plan is provided for illustration purposes only.
Room positions and dimensions are approximate and should be independently measured for accuracy



Sue Adler
KELLER WILLIAMS
PREMIER PROPERTIES



Cell: (973) 936.9129
Office: (973) 376-0033 x101
Sue@sueadler.com
www.sueadler.com/11Hillview

sueadler 
THE #1 KELLER WILLIAMS TEAM IN NEW JERSEY **team**