

# 24 Marion Lane

Scotch Plains, New Jersey



*Sue Adler*  
**KELLER WILLIAMS**  
PREMIER PROPERTIES

**sueadler**   
THE #1 KELLER WILLIAMS TEAM IN NEW JERSEY team

Each Keller Williams office is independently owned and operated.



Welcome to 24 Marion Lane, a spacious center hall colonial situated on an expansive 1 acre lot nestled at the end of a prestigious cul de sac. This expansive home will satisfy even the most discerning of buyers. Fine craftsmanship, attention to detail and upgraded amenities are abundant in this spacious 5 bedroom, 4.5 bath gem.

Upon arrival, an attractive brick paver walkway leads you through the elegant front covered portico. Proceed through double wooden doors with decorative glass insets and a striking Palladian window above into the large two story center foyer where the grand center stairway and front-to-back views afford your first glimpse of the elegance and grandeur of this home. Broad archways reveal views of spacious rooms that provide numerous options for daily life as well as all your entertaining needs. Step to the right to enter the stylish Living Room where light streams through large windows onto the fine dentil moldings and gleaming hardwood floors. The room flows seamlessly into the neighboring Family Room where you'll relish lounging in front of the fireplace as you enjoy drinks prepared in the room's fully outfitted wet bar featuring custom glass fronted cabinetry and a striking granite counter top. Exquisite views are visible through two sets of sliding doors leading to the lush backyard oasis and an elegant French door leads to a handsome Library where fine craftsmanship is evident in the gorgeous paneling and cabinetry that fills the room. A built-in desk is sure to become your favorite place to finish up a work project or daily paperwork.

Continue on into the Kitchen where crisp white custom cabinetry, high-end stainless steel appliances accented by fine granite counter tops and a limestone backsplash provide the ideal setting for the preparation of your favorite gourmet creations. Here you'll find plenty of counter space and a built-in desk to assure you're perfectly organized. Sit down for a casual meal or your morning coffee in the adjacent Breakfast Room or step into the Dining Room via a French door to entertain guests in a truly elegant fashion. A conveniently located Powder Room is just around the corner as is access to the Rear Wing that's complete with a welcoming Guest Room with en suite bath, a fully outfitted Laundry Room and access to the 3-car garage.

When it's time to retire at the end of the evening you'll proceed up the grand center staircase leading to the second level where a gallery hallway guides you to the Master Bedroom Suite and 3 additional spacious bedrooms. Luxury surrounds you in the impeccably designed Master Suite highlighted by a sitting room that's sure to be your favorite place to cozy up with your favorite book, 2 walk-in closets with custom shelving and an abundance of space for all your clothing and shoes, and an en suite, spa-like Master Bath featuring a vaulted ceiling and skylight, a double sink vanity, a whirlpool tub and large walk-in shower. On the opposite side of the gallery hallway there's ample room for family and guests in three light filled bedrooms boasting plenty of closet space and access to a spacious hall bath.



Outside, the large multi-level wood deck is ideal for al fresco entertaining. Picture the space on a cool summer night set with multiple tables and lounge chairs as appetizing smells come from the barbecue. Step down to the expansive lushly landscaped backyard where there's so much space for child's play and all your favorite outdoor hobbies.

And there's more...the finished lower level provides great space for day and night entertainment and includes an expansive Recreation Room that's ideal for family fun. Complete your daily workout in a fully equipped Exercise Room and then move on to any wine collector's dream - a temperature controlled cellar with a 2,100-bottle capacity. Gather around the wet bar just outside for a tasting of your favorite vintage. A large storage room complete with shelving and access to utilities, a room-sized cedar closet as well a full bath with steam shower complete the lower level space.

Upon viewing, you'll undoubtedly see how much the home at 24 Marion Lane has to offer. A vast array of upgraded luxury features, a flexible and spacious floor plan and a spectacular setting with easy access to downtown Westfield shopping and restaurants, NYC transportation and excellent schools make this home a must see! Freshly painted in neutral colors, this move-in ready home is just waiting for the right family to call it home.

# Inside and Out...

## First Level Main Wing

- 2-story Entry Foyer with double wood door entry with decorative glass insets and Palladian window above, chandelier, ceramic tile floor, double door coat closet, chandelier; access to grand center staircase, Powder Room and Lower Level, front-to-back views through Kitchen, broad archways to Dining Room and Living Room
- Living Room with hardwood floors, 2 banks of windows with transom above, dentil crown molding, carpet, dentil crown molding, recessed lighting; archway to step down Family Room
- Family Room with carpet, gas fireplace with wood mantel and brick surround, built-in wet bar with custom cabinetry with glass fronted panels, granite counter top, stainless steel prep sink, 2 sets of sliding doors to raised wood deck and additional window with window treatments, pass-through window to Breakfast Room; French door entry to Library
- Library with walnut paneling and custom cabinetry featuring display shelving, storage cabinets and built-in desk with spot lighting, large picture window and 2 additional windows with wood blinds, recessed lighting, walnut wall clock; French doors with wood mini-blinds leads to rear deck
- Kitchen with hardwood floors, custom white cabinetry, granite countertops, limestone backsplash, stainless steel appliances including Jenn Air 4-burner electric cooktop with center griddle, Jenn Air double wall oven, Frigidaire built-in microwave, Jenn Air trash compactor, Sub Zero refrigerator/freezer with integrated cabinetry panel, center island, built-in desk and buffet serving surface with granite counters, pendant lights above island, recessed lighting, stainless steel double sink with disposal and instant hot and large window above; open to Breakfast Room, French door access to Dining Room, access to rear wing
- Breakfast Area with hardwood floors, chandelier with faux painted ceiling medallion, large bank of windows with window treatments, door with bamboo shades leading to deck
- Dining Room with French door entry, hardwood floors, chair rail, dentil molding, chandelier with ceiling medallion, bay window with window treatments
- Powder Room with ceramic tile floor, pedestal sink with light fixture and mirror above

## First Level Rear Wing

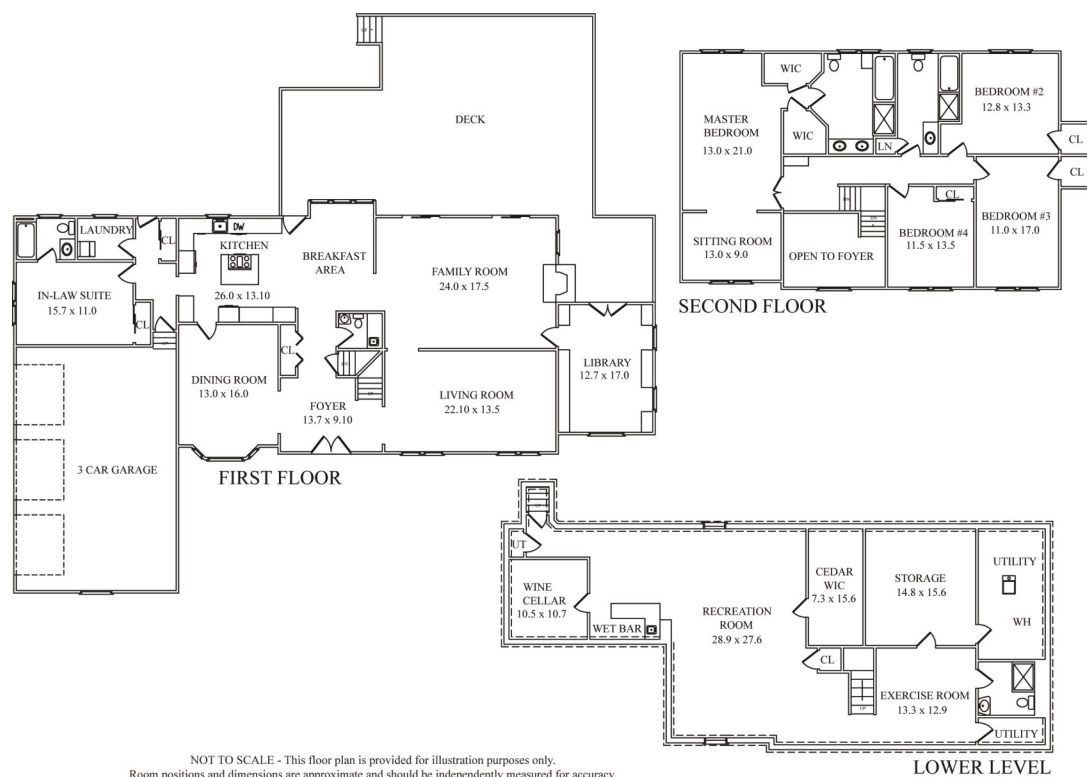
- Hallway with double door storage closet/pantry with shelving, door to backyard
- Guest Room/In-Law Suite with carpet, double door closet, large picture window with wood blinds, en suite bath featuring vanity with faux stone top, large mirrored medicine cabinet and light fixture above, storage below, shower over tub with tiled walls, window with wood blinds
- Laundry Room with ceramic tile floor, window with blinds, utility sink, ceiling fixture

## Second Level

- Gallery Landing with hardwood floors, dentil molding, 2 ceiling fixtures
- Master Bedroom Suite with double door entry, bedroom with carpet, ceiling fan with light, large picture window with blinds, recessed lighting, step up sitting room with large picture window with wood blinds, carpet and recessed lighting, en suite bath with vaulted ceiling with skylight, ceramic tile floor, 2-sink vanity with stone top, built-in mirrored medicine cabinets and light fixture above, storage below, jetted tub with tile surround, walk-in shower with glass sliding doors, tiled walls and 2 shower heads, large picture window with wood blinds, storage cabinet with Corian top
- Bedroom #2 with carpet, ceiling fan with light, large window with wood blinds, walk-in closet with shelving
- Bedroom #3 with carpet, ceiling fan with light, large window with wood blinds, walk-in closet with shelving
- Bedroom #4 with carpet, double door closet, ceiling fan with light, large bank of windows with wood blinds
- Full Hallway Bath with vanity with stone top, storage below and mirrored medicine cabinet above, light fixture, tub with tiled ½ wall above, shower with sliding glass doors, window with wood blinds, ceiling fixture

*Sue Adler*  
**KELLER WILLIAMS**  
PREMIER PROPERTIES

Cell: (973) 936-9129  
Office: (973) 376-0033 x101  
admin@sueadler.com  
www.sueadler.com/24Marion



## Lower Level

- Recreation with carpet, recessed lighting, grade level window, room sized cedar closet with shelving, deep under-stair storage closet, wet bar with Formica counter top, stainless steel prep sink, storage cabinets and mirrored backsplash
- Wine Cellar with ceramic tile floor, 2,100 bottle capacity, temperature controlled, recessed lighting and tasting table
- Exercise Room with carpet, recessed lighting and wall mounted TV
- Full Bath with ceramic tile floor, recessed lighting, pedestal sink with mirror above, glass door shower with built-in bench and grade level window
- Unfinished Storage Room with shelving and fluorescent lighting and access to Utility Room

## Additional Features and Upgrades

- Professionally landscaped 1-acre level lot with brick paver walkways, expansive multi-level wood deck, underground sprinkler, landscape lighting, perennial gardens, mature trees and shrubs, children's play set
- 3-car garage with electric doors and wire shelving
- Security system with Central Station hook-up
- 2-zone forced air heat/AC
- Updated Kitchen
- Bilco door for lower level emergency exit
- French drains and sump pump (new 2016) installed in lower level
- Freshly painted interior (2017)
- High ceilings throughout home
- Central vacuum system
- Full home generator (2015)

