

54 Tillou Road West

South Orange, New Jersey



Sue Adler
KELLER WILLIAMS
PREMIER PROPERTIES

sueadler 
THE #1 KELLER WILLIAMS TEAM IN NEW JERSEY team

Each Keller Williams office is independently owned and operated.



Welcome to 54 Tillou Road West! This picture perfect 3 Bedroom (with potential 4th Bedroom in Basement), 4 ½ Bath home, situated in one of South Orange's most prestigious neighborhoods, boasts high end finishes and upgrades at every turn, gleaming hardwood floors throughout, an open and airy floor plan and spacious rooms.

Drive up to find this extraordinary home nestled on a quiet cul de sac and prepare to be impressed. Walk up to the welcoming front door flanked by elegant sidelites and transom. Beauty abounds with the dramatic 2-story Entry Foyer featuring a statement butterfly staircase with decorative iron railings, chic tile floor and a view of the second floor landing. A graceful Powder Room, large Coat Closet and generous Laundry Room are conveniently located just off of the Entry Foyer. Flow easily into the sundrenched Living Room with gleaming hardwood floors and a gorgeous bay window. Dinner parties are divine in the sophisticated formal Dining Room complete with an exquisite chandelier, wainscoting and a beautiful view of the property beyond. Any chef will be impressed with the Gourmet Kitchen with custom wood cabinetry, island, gorgeous countertops and a huge Walk-In Pantry so that not a thing will be out of place. An adjacent Butler's Pantry Area, with its own refrigerator, sink and marble countertops, is the perfect place to mix cocktails. Enjoy a cup of coffee in the dreamy Breakfast Room as you soak in sunlight and views of the backyard. The spacious Family Room flows easily from the Breakfast Area. This impressive room, bathed in sunlight, is the ultimate in comfort with its cozy fireplace, beamed ceiling and French doors out to the covered outdoor entertaining space.



Ready to retire for the evening? Walk up the elegant staircase to the magnificent 2nd Floor Landing overlooking the Entry Foyer. It doesn't get better than the luxurious Master Bedroom Suite. A two-sided fireplace with stone surround, decorative inset ceiling and an ENORMOUS Dressing Room with a custom island, built-ins and Dual Walk-In Closets make the Master Suite your own sumptuous oasis. The Master Bathroom is tastefully appointed with a built-in Jacuzzi tub, dual vanities and separate shower. Walk down the hallway to find 2 more spacious ensuite bedrooms, each with its own Walk-In Closet and spacious bath.

And there's more! The finished Lower Level will provide endless hours of entertainment with a Recreation Room and Exercise Room. Off of the Recreation Room is a Bonus Room, perfect as a au pair suite, additional Bedroom or Office. A tasteful Full Bathroom is the perfect addition to this floor. This spacious Lower Level adds tons of living space and functionality to the home.



With fantastic schools, easy access to the Jitney, Midtown Direct Train and South Orange Village, 54 Tillou Road West is ideal in every way.

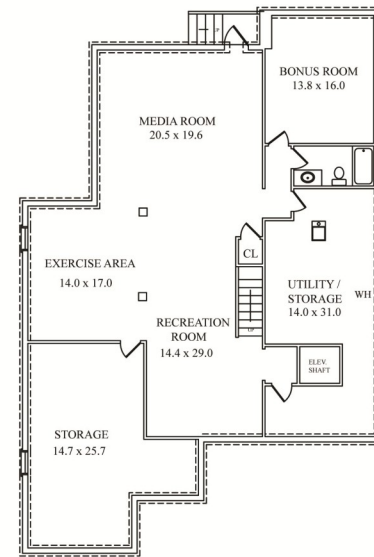
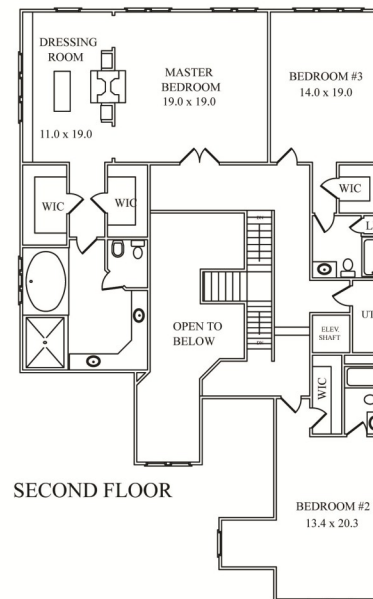
Inside and Out...

First Level

- Elegant wood front door with sidelites and transom
- Two-story Entry Foyer featuring butterfly staircase with decorative iron railings, tile flooring, wainscoting, chandelier, runner on staircase
- Laundry Room with tile floor, utility sink with storage cabinetry above and below, Samsung He dryer, Kenmore He washer
- Powder Room featuring tile flooring, pedestal sink, mirror with light fixture above, ceiling light fixture
- Walk-in wrap around Coat Closet with storage and shelving
- Library featuring hardwood floors, triple window with transom, vaulted ceiling, recessed lighting
- Living Room featuring hardwood floors, bay window, recessed lighting, wainscoting, crown molding, designer window treatments
- Dining Room featuring hardwood floors with decorative inlay, recessed lighting, chandelier, wainscoting, crown molding, designer window treatments
- Family Room featuring fireplace, beamed ceiling and French doors to covered patio
- Gourmet Chef's Kitchen featuring custom cabinetry with tiger eye decorative pulls and stone backsplash with tiger eye decorative inlay, granite countertops, tile flooring, high end GE Monogram stainless steel appliances, island with two pendant light above, warming drawer, range/oven, 2 dishwashers, 2 wall ovens, 2 sinks, walk-in pantry with shelving and storage
- Butler's Pantry featuring marble countertops, glass front custom cabinetry with decorative pulls, mirrored backsplash, sink and GE Monogram wine refrigerator
- Covered Porch off Family Room
- Breakfast Area featuring tile flooring, plantation shutters, recessed lighting, chandelier, baseboard molding
- Elevator shaft
- 2 Car Garage with carriage style electric doors

Second Level

- Gallery Landing overlooking Entry Foyer, hardwood floors, wainscoting, recessed lighting, sconces, crown molding
- Master Bedroom Suite featuring fireplace with custom millwork mantle and stone surround, carpeting, decorative inset ceiling, crown molding, wainscoting, recessed lighting
- Master Dressing Area featuring dual Walk-In Closets, fireplace with custom millwork mantle and stone surround, custom built in cabinetry, island and window seat, carpeting, recessed lighting, crown molding, wainscoting
- Master Bathroom featuring tile flooring, dual vanities with granite countertops, jetted soaking tub, separate shower, separate toilet room
- Ensuite Bedroom #2 featuring carpeting, ceiling fan with light, recessed lighting, baseboard molding, study nook, custom walk in closet, Full Bath featuring tile flooring, custom cabinetry with granite countertop, mirror with light above, shower over tub with tile surround and glass doors
- Ensuite Bedroom #3 featuring carpeting, recessed lighting, baseboard molding, custom walk in closet, Full Bath featuring tile flooring, custom cabinetry with granite countertop, mirror with light above, shower over tub with tile surround and glass doors, linen closet and corian surround, custom mirror, recessed lighting, skylight, linen closet



NOT TO SCALE - This floor plan is provided for illustration purposes only. Room positions and dimensions are approximate and should be independently measured for accuracy.

Lower Level

- Recreation Room featuring carpeting, recessed lighting and high ceiling
- Exercise Room featuring recessed lighting,
- Hall Bathroom featuring tile flooring, custom cabinetry with granite countertop, mirror with light above, shower over tub with tile surround and glass doors
- Bonus Room featuring carpeting, recessed lighting, inset ceiling, baseboard molding
- Storage Room (with potential to be finished for an additional living space/bonus room)
- Utility/Storage Room

Lower Level

- Professionally landscaped
- Covered Porch off Family Room

Additional Features and Upgrades

- 9' - 9'6" ceilings throughout
- Irrigation system
- Andersen windows throughout
- 2 zone heat/AC
- High end finishes, top of the line appliances and exquisite finishes throughout - superior to builder grade base model in all areas
- Hot water heater (2017)

Sue Adler
KELLER WILLIAMS
 PREMIER PROPERTIES

Cell: (973) 936-9129
 Office: (973) 376-0033 x101
 admin@sueadler.com
 www.sueadler.com/54TillouW