

65 LENOX ROAD
SUMMIT, NJ 07901

Cell: (973) 936-9129
Office: (973) 376-0033 x101
admin@sueadler.com
www.sueadler.com/65Lenox



Sue Adler
KELLER WILLIAMS
PREMIER PROPERTIES

sueadler 
THE #1 KELLER WILLIAMS TEAM IN NEW JERSEY **team**

Each Keller Williams office is individually owned and operated.





Situated gracefully on nearly 1 acre in Summit's sought after Northside, 65 Lenox is a rare opportunity to own a fully renovated architectural masterpiece with fabulous grounds and gardens close to New York City, Midtown Direct train, Blue Ribbon schools, excellent restaurants, shopping and all Summit has to offer.

Walk up the herringbone patterned front walkway and prepare to be transfixed by this incredible home. With a front entry flanked by meticulous bluestone, gorgeous brickwork, crisp hedges and lush gardens, this magnificent home has a truly enchanting vibe. Enter the elegant Entry Foyer and note the stunning craftsmanship, timeless architectural details and beautiful moldings at every turn. If you love to entertain, this is the home for you. Walk through the Entry Foyer and prepare to host friends and family in the marvelous Reception Area/Bar Room perfectly equipped with built-in cabinetry, ice maker and wine refrigerator. After cocktails, flow easily into the formal Dining Room complete with French doors and elongated windows perfect for viewing the park-like property beyond. Move from the Dining Room to the lovely Butler's Pantry with custom cabinetry and glass front storage so that all your china and glassware can be easily stored away. Prepare to be dazzled by the Gourmet Chef's Kitchen with its oversized 2-tier island, marble and walnut countertops, stainless steel high-end appliances and a second furniture-style built-in with glass fronts and marble countertops. The adjacent Breakfast Room has its own fireplace, built-in window seats and provides gorgeous views of the outdoor entertaining area. This kitchen, truly a work of art, is the highest in form and function. A large Mudroom and Office are sure to be "command central" for any busy family and provide easy access to the garage and backyard.







Sit down and enjoy your favorite novel fireside in the breathtaking Living Room complete with custom built-ins, architectural moldings and lovely views of the Music Room beyond. The Music Room, with access to the outdoor gardens, is the perfect spot to practice your scales or merely enjoy some quiet time. The elegant Library, with its warm mahogany paneling built-ins and fireplace, is the perfect spot to work from home. Flow easily into the nearby Great Room, bathed in sunlight, with a coffered ceiling, lavish use of windows and a fireplace adorned with floor to ceiling custom millwork. This room exudes relaxation and is well suited for family game night, movie watching or cozy nights by the fire. Accessed from the Great Room, relax in the tranquil and breezy 3-season Sun Porch well suited for quiet time or simply spending time with friends and boasting easy access to the outdoor entertaining space.

When it's time to retire for the evening, the stately staircase leads you to a sitting area featuring a pretty architectural window and timeless wainscoting. Enter the incredibly private Master Bedroom Wing with luxurious His and Her Walk-In Closets AND Bathrooms, a Sitting Room, dressing area and main bedroom with custom built-ins and gorgeous fireplace. The immense privacy and sophistication of this space is sure to captivate. Spacious Bedrooms 2-4 (all ensuite) include gorgeous architectural moldings and generous closet space. A second floor Laundry Room, complete with custom cabinetry and plenty of counter space for folding, makes doing laundry ultra convenient. The immense Third Level comprises two additional bedrooms and a fully renovated Full Bath. An enormous Recreation/Den Area, rounds out the Third Level.

Equally fantastic as the architectural magnificence of the house is its ethereal outdoor space and charming Cottage. Multiple bluestone patios, elaborate brickwork, an outdoor fireplace, professional lighting and magical gardens are just a few of the extraordinary outdoor features. Even better, guests will be entranced by the fairy-tale like Cottage with plenty of room for additional entertaining pursuits.

65 Lenox's architectural details, entertaining spaces and magnificent outdoor space make it a dream home in every way. Just minutes from Blue Ribbon schools, NYC transportation, luxury shopping and downtown Summit, this home must be seen to be believed.



INSIDE AND OUT...

First Level

- Entry Foyer featuring Entry Door with leaded glass sidelites and leaded glass transom, elongated windows with true divided lights, custom window treatments, hardwood floors, wainscoting, wallpaper, custom hand blown glass chandelier with ceiling medallion, recessed lighting, sconces, crown molding, in-ceiling speakers, U-shaped staircase
- Powder Room featuring marble mosaic tile flooring, wood vanity with marble countertop, wall paper, sconces, recessed lighting, baseboard molding, crown molding, Toto toilet
- Dining Room featuring hardwood floors, wainscoting, double French doors with sidelites, custom Swarovski chandelier with ceiling medallion, inset ceiling, crown molding, baseboard molding, elongated windows with true divided lights and custom window treatments, in-ceiling speakers, sconces with crystal accent
- Living Room featuring elongated windows with true divided lights, custom window treatments, hardwood floors, custom raised wall molding, custom built-in shelving, fireplace with marble surround and custom millwork mantle, custom sisal area rug, recessed lighting, sconces, in-ceiling speakers, crown molding, baseboard molding, pocket doors into Family Room
- Music Room featuring double French doors to outdoors, elongated windows with true divided lights, custom window treatments, custom sisal area rug, recessed lighting, in-ceiling speakers, pocket doors to Library
- Library featuring fireplace with stone surround and custom millwork mantle, elongated windows with true divided lights, hardwood floors, recessed lighting, sconces, custom wood built-ins with open and concealed storage (including glass door fronts), mahogany millwork/paneling throughout, custom accent lighting, crown molding with dentil detail, pocket doors to Family Room
- Family/Great Room featuring double French doors out to Sun Porch, coffered ceiling, fireplace with brick surround and floor to ceiling custom millwork mantle, hardwood floors, elongated windows with true divided lights, custom window treatments, wallpaper, Vaughn lantern light fixture, recessed lighting, sconces, baseboard molding
- Screened Sun Porch featuring bluestone flooring, bead board ceiling, ceiling fan, recessed lighting, in ceiling speakers, 2 French doors into Family Room, removable screens at 3 exposures
- Bar Room featuring custom built-in cabinetry with concealed storage and glass front cabinetry, granite countertops, stainless Franke bar sink, wine refrigerator, U-Line icemaker, wallpaper (cushioned for sound), crown molding, baseboard molding, in-ceiling speakers, pendant light fixture, double French doors with sidelites, to outdoor entertaining space, niche for artwork, Coat Closet

- Gourmet Chef's Kitchen featuring hardwood floors, custom wood cabinetry with dentil detail, marble, granite and walnut countertops, handmade subway tile backsplash, glass front cabinetry with in-cabinet lighting and bead board detail, custom pot rack with lighting, Sub Zero refrigerator, warming oven, Wolf convection oven, Bosch stainless steel dishwasher, Wolf stainless steel 6 burner double oven/range with griddle, 2 stainless steel sinks, coffered ceiling, recessed lighting, custom pendant light fixtures over island, in-cabinet lighting, 2 tier island with seating for 4 (lower sous chef with marble countertop and sink for baking preparation), a custom furniture style built-in with marble countertop, glass front doors, plate storage and bead board detail, hanging, pocket door Mudroom
- Breakfast Area featuring fireplace with brick surround and floor to ceiling millwork mantle, hardwood floors, recessed lighting, chandelier, double French doors with sidelites to outdoor entertaining space, 2 custom window seats with built-in storage
- Hallway between Kitchen and Dining Room featuring Broom Closet, Walk-in Pantry, back staircase to 2nd Level, hardwood floors, recessed lighting, wallpaper, baseboard molding, crown molding, doorway to Lower Level
- Butler's Pantry featuring hardwood floors, custom built-in cabinetry with concealed storage, glass front doors for upper storage, walnut countertops, wallpaper, bead board wainscoting, Bosch dishwasher, Shaws farm sink, recessed lighting, semi-pendant light fixtures, Pantry Closet with pocket door
- Mudroom featuring slate flooring, custom built-in cabinetry and seat with concealed storage, bead board wainscoting, recessed lighting, custom chandelier, wallpaper, Double Door Closet, door with sidelites to backyard, stairway to garage and Lower Level
- Office featuring slate flooring, custom built-in cabinetry, walnut countertop, bead board wainscoting, recessed lighting, pocket door, wood blinds
- 3 car heated garage with carriage style electric doors, access to storage over garage with 3 dormer windows and electric (potential to be finished area)

Second Level

- U-shaped staircase with new custom runner, picture window at landing, lantern light fixture, decorative wood railings
- Second Floor Sitting Area and Hallway featuring hardwood floors, custom area rug, wainscoting, recessed lighting, sconces, oval decorative window, crown molding, wallpaper, Linen Closet with floor to ceiling shelving, rear staircase to Lower Level, staircase to Third Level
- Master Bedroom Wing featuring (1) Main Room with fireplace with marble surround and custom millwork mantle and custom built-ins, custom area rug, sconces, wood

- blinds and custom window treatments, crystal door knobs (2) Study, (3) Dual Walk In Closets with custom adjustable shelving, hanging storage and drawers (4) Dressing Room with safe and access to Outdoor Terrace, recessed lighting, heated hardwood floors
- "His" Master Bathroom featuring heated marble flooring, porcelain wash basin sink, recessed lighting, sconce, in-ceiling speakers, built-in Jacuzzi tub, tiled shower with frameless glass door and handheld and regular shower, linen closet, Toto toilet
- "Her" Master Bathroom featuring heated basket weave floor tile, custom vanity with storage below and marble countertops, window seats with storage, separate room with pocket door for toilet, Toto toilet, marble tiled shower with rain showerhead and handheld shower, frameless glass door, built-in linen storage, recessed lighting, in-ceiling speakers, Perrin and Rowe fixtures, wood blinds
- 2nd Floor Laundry Room featuring slate flooring, custom built-in cabinetry with stainless countertop, subway tile backsplash, Electrolux front loader washer and dryer, stainless sink, built in ironing board, recessed lighting, crown molding
- Ensuite Bedroom #2 featuring hardwood floors, baseboard molding, crown molding, Walk-In Closet with custom adjustable shelving and hanging storage, wood blinds, wallpaper, sconces, Full Bathroom featuring marble hexagonal floor tile, shower over tub with subway tile surround, regular and handheld showers, sliding glass doors, wash basin sink, recessed lighting, baseboard molding, crown molding, fan, sconces, Toto toilet
- Ensuite Bedroom #3 featuring hardwood floors, baseboard molding, crown molding, Double Door Closet with custom adjustable shelving and hanging storage, custom built-in bookshelves with window seat (with bead board detail), wood blinds, recessed lighting, sconces, Full Bathroom featuring mosaic floor tile, shower over tub with subway tile surround and rope accent tile, regular and handheld showers, bead board wainscoting, wood vanity with storage and Corian countertop, built in medicine cabinet, recessed lighting, baseboard molding, crown molding, Toto toilet
- Ensuite Bedroom #4 featuring hardwood floors, baseboard molding, crown molding, Double Door Closet with custom adjustable shelving and hanging storage, wood blinds, recessed lighting, Full Bathroom featuring mosaic floor tile, shower over tub with subway tile surround and rope accent tile, regular and handheld showers, bead board wainscoting, wood vanity with storage and Corian countertop, built in medicine cabinet, recessed lighting, baseboard molding, crown molding, Toto toilet, Linen Closet, sconce



INSIDE AND OUT...

Third Level

- Staircase with new custom runner to Third Level, sconces
- Third Floor Great Room featuring carpeting, bead board wainscoting, arched ceiling, recessed lighting, traditional wood shutters, architectural arched windows with true divided lights, eave storage
- Bedroom #5 featuring hardwood floors, wood blinds, arched ceiling, baseboard molding, eave storage, Double Door Closet
- Bedroom #6 featuring sitting area with built in bench with storage and bead board detail, hardwood floors, Double Door Closet, baseboard molding, arched ceiling, eave storage, wood blinds, sconce
- Full Bathroom featuring hexagonal floor tile, porcelain wash basin sink, 3 light sconce, shower with regular and handheld shower, subway tile surround and frameless glass door, recessed lighting, arched ceiling, traditional wooden shutters, Toto toilet

Lower Level

- Main staircase with custom runner, window seat with storage and bead board detail at landing, recessed lighting, semi-pendant light fixture
- Entry Area featuring carpeting, recessed lighting, Storage Closet
- Recreation Room featuring carpeting, recessed lighting, in-ceiling speakers, chandelier, Double Door Storage Closet
- Mud Room Area at rear staircase featuring slate flooring, recessed lighting, custom built-in cubbies with seat, Walk-In Closet with custom shelving, baseboard molding, Utility Closet
- Exercise Room featuring carpeting, recessed lighting, bead board detail, baseboard molding, Utility Closet
- Den/Storage featuring linoleum flooring, fireplace with stone surround, recessed lighting, Utility Closets (space could be finished and used a potential Wine Cellar)
- Half Bathroom featuring hexagonal mosaic tile, pedestal sink, medicine cabinet, baseboard molding, recessed lighting, Toto toilet, pocket door
- 2nd Laundry Room/Children's Art Studio featuring epoxy flooring, built-in cabinetry with Corian countertop, utility sink, Maytag washer and dryer, custom built-in shelving for art supply storage, recessed lighting and task lighting
- Utility storage area

Carriage House/Cottage

- Stone exterior
- Carpeting
- Cathedral ceiling
- Baseboard heating (A/C not needed)
- In-ceiling speakers
- Ceiling fans with lights, recessed lighting

Front Yard/Backyard

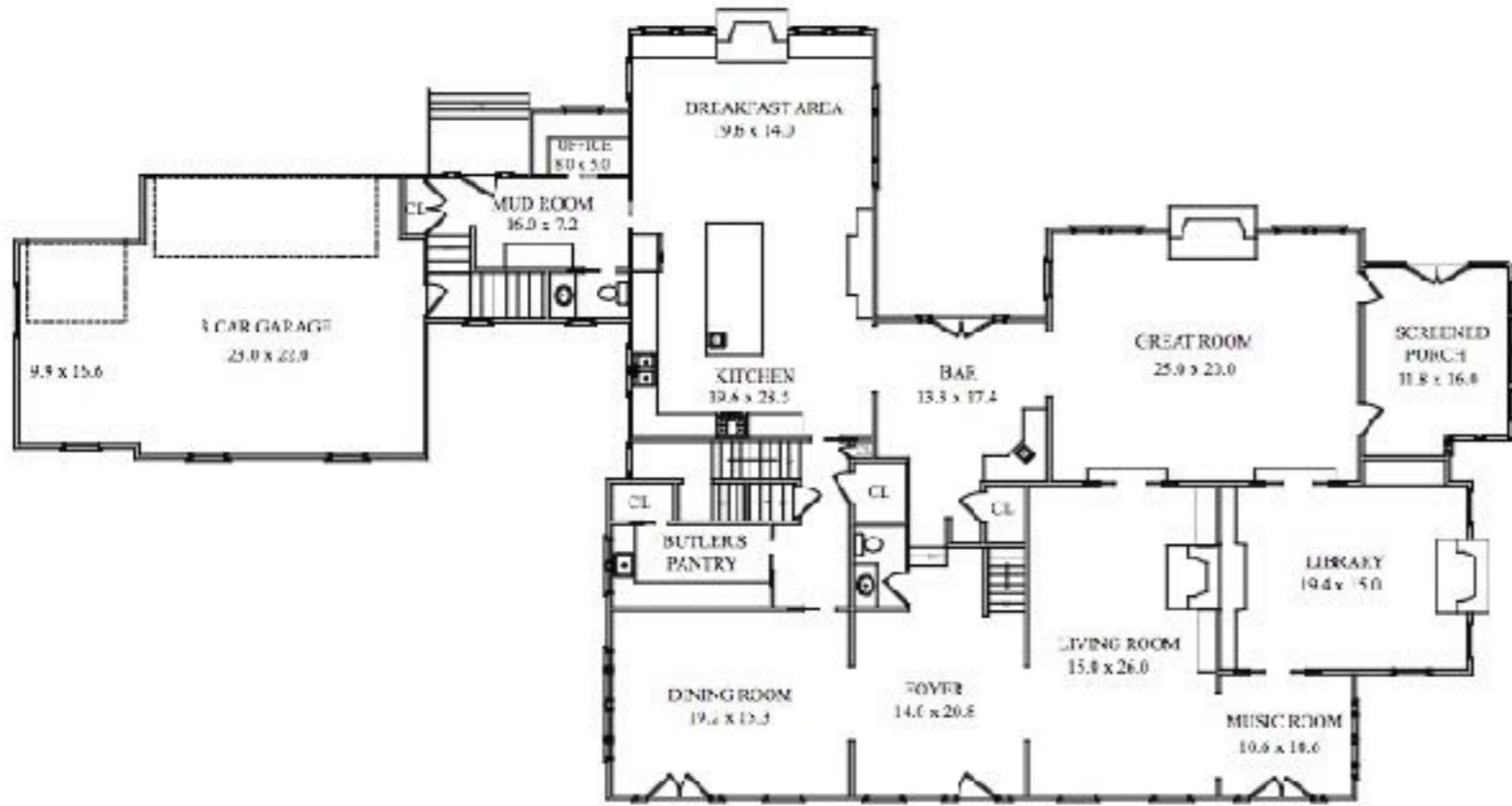
- Herringbone pattern brick front walkway
- Custom flower window boxes with hidden irrigation
- Custom fencing, posts and arbor
- Main Bluestone and Brick Patio
- 2nd Bluestone Patio outdoor gas fireplace and enclosed by stone walls
- Built-in barbeque with decorative brickwork surround, stone walls, outdoor lanterns
- Professionally landscaped throughout with a dozen varietal and seasonal plants, as such as walls of hydrangea, hosta, and crisp neat hedges (2012)
- Professional outdoor lighting and high-end lanterns
- Outdoor sound system
- Kitchen window bird bath and permanent bird feeder

Additional Features/Upgrades

- Entire house and outdoors wired with speakers
- 6 zone Heat/AC
- Electric and gas infrastructure for generator
- New water heater (2017)
- Alarm system
- Central vacuum
- All light switches with dimmer feature
- Intercom system tied to exterior doors
- Custom faux hand painting on First Floor



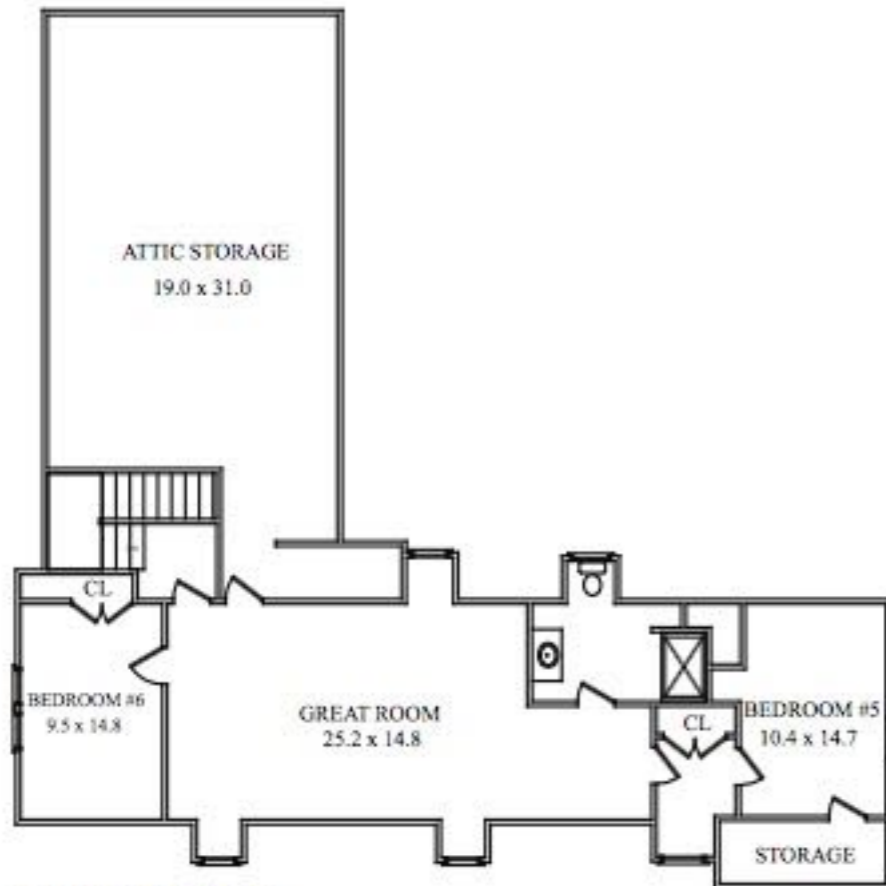




FIRST FLOOR



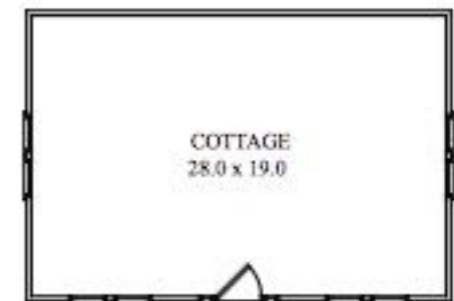
SECOND FLOOR



THIRD FLOOR



LOWER LEVEL



NOT TO SCALE - This floor plan is provided for illustration purposes only. Room positions and dimensions are approximate and should be independently measured for accuracy

