

# 6 MAPLE STREET

CHATHAM, NJ 07928

Cell: (973) 936-9129  
Office: (973) 376-0033 x101  
admin@sueadler.com  
www.sueadler.com/6Maple



*Sue Adler*  
**KELLER WILLIAMS**  
PREMIER PROPERTIES

**sueadler**   
THE #1 KELLER WILLIAMS TEAM IN NEW JERSEY **team**

Each Keller Williams office is individually owned and operated.





Welcome to 6 Maple Street where you'll find a truly stunning custom home on display for you. With multiple high end million dollar plus homes transforming the area, this unique property surely adds to the allure of this sought after, family friendly neighborhood. Newer construction with attention paid to every last detail, this striking home displays perfection both inside and out.

Upon arrival, you'll step through the exquisite mahogany front door into the welcoming Entry Foyer that provides your first glimpse of all this home has to offer. Warm hued wide plank oak floors and custom millwork set the tone for all the fabulous details you'll experience as you move throughout the light filled living and entertaining spaces. Through a broad archway to the right you'll find the formal Living Room featuring an elegant gas fireplace that is sure to become the focal point of the room when sitting down with family and friends for intimate conversation or grand holiday celebrations alike. Step through another archway to the left to enter the formal Dining Room highlighted by a fully windowed wall, custom wainscoting and a statement making chandelier. A conveniently located Butler's Pantry linking the Kitchen and the Dining Room makes your dining experiences easy and exceptional!

Central to the open first level is the designer Kitchen inspired by any cook's dream. It features a striking coffered ceiling, crisp white custom cabinetry with leathered granite counters and subway tile backsplash, every top-of-the-line appliance imaginable and an oversized center island/breakfast bar topped with stunning Carrera marble. Enjoy your gourmet creations in the adjacent Breakfast Room that's highlighted by a fully windowed wall providing stunning backyard views and French door access to the stone patio just outside. A conveniently located Powder Room, a handsome Study (which can flexibly be used as an additional bedroom) with en suite bath and backyard access, and a spacious Mud Room with cubbies complete the first level living space.







When it's time to retire at the end of the evening you'll proceed to the stately staircase leading up to the second level where a central foyer guides you to the Master Bedroom Suite and 4 additional bedrooms – each with plenty of closet space and an elegant en suite bath. Savor the luxury found in the Master Bedroom Suite featuring a tray ceiling, large windows with views of the lush grounds and a private dressing room with a full wall of custom cabinetry assuring the perfect place for all your belongings. The unit includes a glamorous marble topped vanity with large mirror and lighting above. Through the dressing room you'll find a fully customized room-sized walk-in closet as well as the double door entry into the spa-like en suite bath boasting His & Hers vanities with fine Carrera marble counters, a radiant heated marble floor, an attractive free standing tub and glass enclosed shower with multiple shower heads and wall jets. A more luxurious private retreat you will not find! A conveniently located second floor Laundry Room equipped with two sets of washers and dryers is sure to please, and the private Study Nook around the corner is perfect for daily homework. Proceed up the staircase to the unfinished third level with so many options for you to create as you see fit – perhaps an artist studio, a children's play room, home office or all three – the space has endless possibilities!

And there's more... A fully finished lower level with expansive Recreation Room, Home Gym with rubber flooring, an additional bedroom and a full bath plus a Bonus Room that's equipped with storage shelving all provide an abundance of potential to meet changing needs. And don't miss the fabulous, fully fenced backyard where a large bluestone and travertine rear patio, sprawling flat lawns and spectacular salt water pool are ideally suited for outdoor entertaining...picture the space with multiple tables and lounge chairs while appetizing smells emanate from the built-in barbecue grill and your favorite tunes are broadcast through the outdoor speakers. Then, gather round the built-in fire pit to enjoy a cool summer night under the stars. You'll never want to leave this private oasis!

Nothing has been overlooked in this one-of-a-kind meticulously maintained home highlighted by the ultimate in modern amenities and chic upscale styling. With its sought-after location, top notch schools and easy access to world class shopping, restaurants and NYC transportation, 6 Maple Street is the perfect place to call home.



# INSIDE AND OUT...

## First Level

- Entry Foyer with front to back views, 7" wide plank oak floors, 10' ceiling, custom millwork including deep crown moldings and recessed wainscoting, double door coat closet, chandelier; broad archways to Living Room and Dining Room, access to center staircase, Kitchen, Powder Room and Lower Level
- Living Room with wide plank oak floors, deep crown moldings, gas fireplace with travertine surround and wood mantel, 4 large windows with Roman shades, recessed lighting and built-in ceiling speakers
- Dining Room with wide plank oak floors, deep crown moldings and wainscoting, 2 large windows with Roman shades, polished nickel chandelier, recessed lighting, built-in ceiling speakers; doorway to Butler's Pantry
- Butler's Pantry with hardwood floors, crown molding and wainscoting, custom cabinetry with glass fronted accent panels and display lighting, subway tile backsplash, leathered granite counter, under cabinet lighting, walk-in pantry closet with shelving and water cooler; doorway to Kitchen
- Kitchen featuring travertine tile floor, coffered ceiling with recessed lighting, custom cabinetry with glass fronted accent panels LED under-cabinet lighting and interior lighting, leathered granite counter tops, oversized center island with 5 seat breakfast bar, honed Carrera marble counter, large stainless steel prep sink and oversized polished nickel pendant lights above, filtered water, top-of-the-line stainless steel appliances including 2 Thermador refrigerators, 2 Miele dishwashers, trash compactor, 2 SubZero freezer drawers, SubZero wine refrigerator, 36" 6-burner Thermador range with hood above, Thermador microwave, Thermador warming drawer, Marvel ice maker, stainless steel sink with Grohe fixtures, pot filler, instant hot and window above; open to Breakfast Room with coffered ceiling, recessed lighting, travertine floor and French doors to patio with sidelights and transom above; open to

Family Room, access to rear hallway, Study, Full Bath and Mud Room

- Family Room with oak floors, recessed lighting, crown molding, built-in ceiling and surround sound speakers, gas fireplace with floor to ceiling stone surround, 2 large picture windows and 2 additional windows with Roman shades
- Powder Room with marble penny tile floor, pedestal sink, tile wainscoting, 2 sconces, mirror, crown molding and recessed lighting
- Bedroom #7/Study with French door entry, hardwood floors, wainscoting, large picture window with wood blinds flanked by 2 custom built-ins, double door closet; en suite access to Full Bathroom
- Full Bathroom accessed via Study or Kitchen hallway with marble tile floor, wainscoting, window with wood blinds, vanity with leathered granite counter top, glass door shower, storage/linen closet with shelving
- Mud Room with 5 built-in cubbies with adjustable shelving and coat hooks, wainscoting, travertine tile floor; entry via driveway, garage and lower level staircase

## Second Level

- Gallery Landing with wide plank oak floors, double door linen closet with shelving, recessed lighting, crown molding, ceiling fixture; access to all bedrooms and rear hallway
- Master Bedroom Suite featuring double door entry, wide plank oak floors, large picture window and 2 additional windows with Roman shades, tray ceiling, recessed lighting, built-in ceiling speakers, crown molding, Samsung TV; archway to Dressing Room with full wall custom built-in featuring drawers, shelving and vanity table with Carrara marble top, mirror and recessed lighting above, room sized walk-in closet custom shelving, 3 light fixtures, hardwood floors, floor to ceiling mirror, "closet within a closet" for storage; double door entry to en suite bath with radiant heated patterned marble tile floor, recessed lighting, crown molding, His & Hers vanities with custom cabinetry and Carrara marble counter, framed

mirror and 2 sconces above, free standing tub with window above, glass enclosed marble shower with rain shower and hand held shower heads plus 3 additional jets, separate commode with window

- Bedroom #2 with hardwood floors, 2 windows with shades, custom wainscoting, crown molding, recessed lighting, walk-in closet with shelving, en suite bathroom with patterned marble tile floor, custom vanity with Carrara marble top, framed mirror and light fixture above, crown molding, recessed light, shower over tub with subway tile wall, 2 shower heads and swinging glass door
- Bedroom #3 with hardwood floors, crown molding, recessed lighting, 3 windows with Roman shades, walk-in closet with shelving, en suite Bathroom with hexagonal marble tile floor, custom vanity with storage below, Carrara marble top and framed mirror and light fixture above, glass enclosed tiled shower, window with shades, crown molding
- Rear Hallway with 2 double door closets with shelving; access to Laundry Room, Bedroom #4 & #5, study nook and rear staircase
- Laundry Room with travertine tile floor, custom cabinetry, stainless steel sink, large windows, 2 sets of Whirlpool Duet front loading washers and dryers, double door storage closet, broom closet
- Bedroom #4 with hardwood floors, large picture window with built-in window seat flanked by 2 bookcases/storage units, crown molding, double door closet with shelving, en suite Bathroom with marble tile floor, wainscoting, custom vanity with marble top, framed mirror and light above, glass door tiled shower, window with shade, recessed light
- Bedroom #5 with hardwood floors, 2 window seats with storage nooks below, 4 additional windows with shades, walk-in closet plus 2 additional closets, crown molding, recessed lighting, en suite Bathroom with marble tile floor, wainscoting, custom vanity with marble top, framed mirror and light above, glass door tiled shower, window with shade, recessed light





# INSIDE AND OUT...

## Third Level

- Fully roughed out level (800+ square feet) with plumbing, electrical and central vacuum installed

## Lower Level

- Recreation Room with Karastan carpet, wainscoting, recessed lighting, built-in ceiling speakers, wall mounted TV, 3 double door storage closets, storage closet with controls for whole house Sonos sound system, 2 grade level windows, GE Profile refrigerator/freezer
- Exercise Room with double door entry, rubber floor, 2 double door closets, recessed lighting
- Full Bathroom with leathered granite topped vanity with framed mirror and light fixture above, porcelain tile floor, tiled shower with sliding glass doors
- Bedroom #6 with double door entry, wainscoting, recessed lighting, double door closet with shelving
- Bonus Room with carpet, closet, storage shelving, recessed lighting, access to utilities

## Exterior

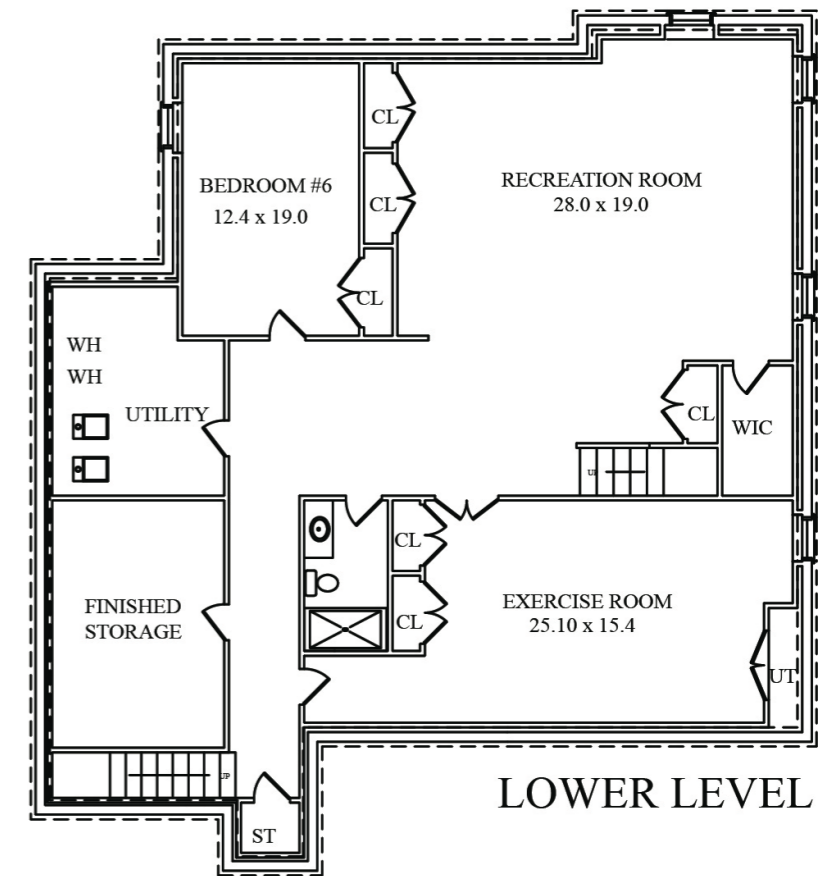
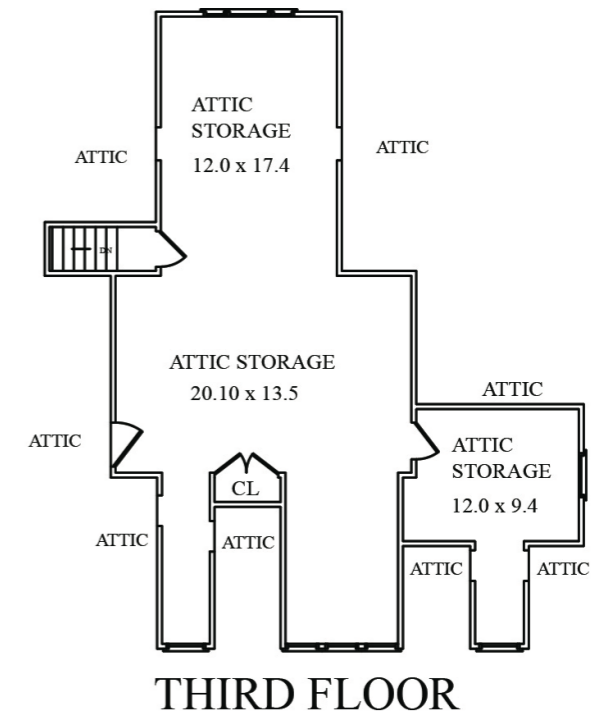
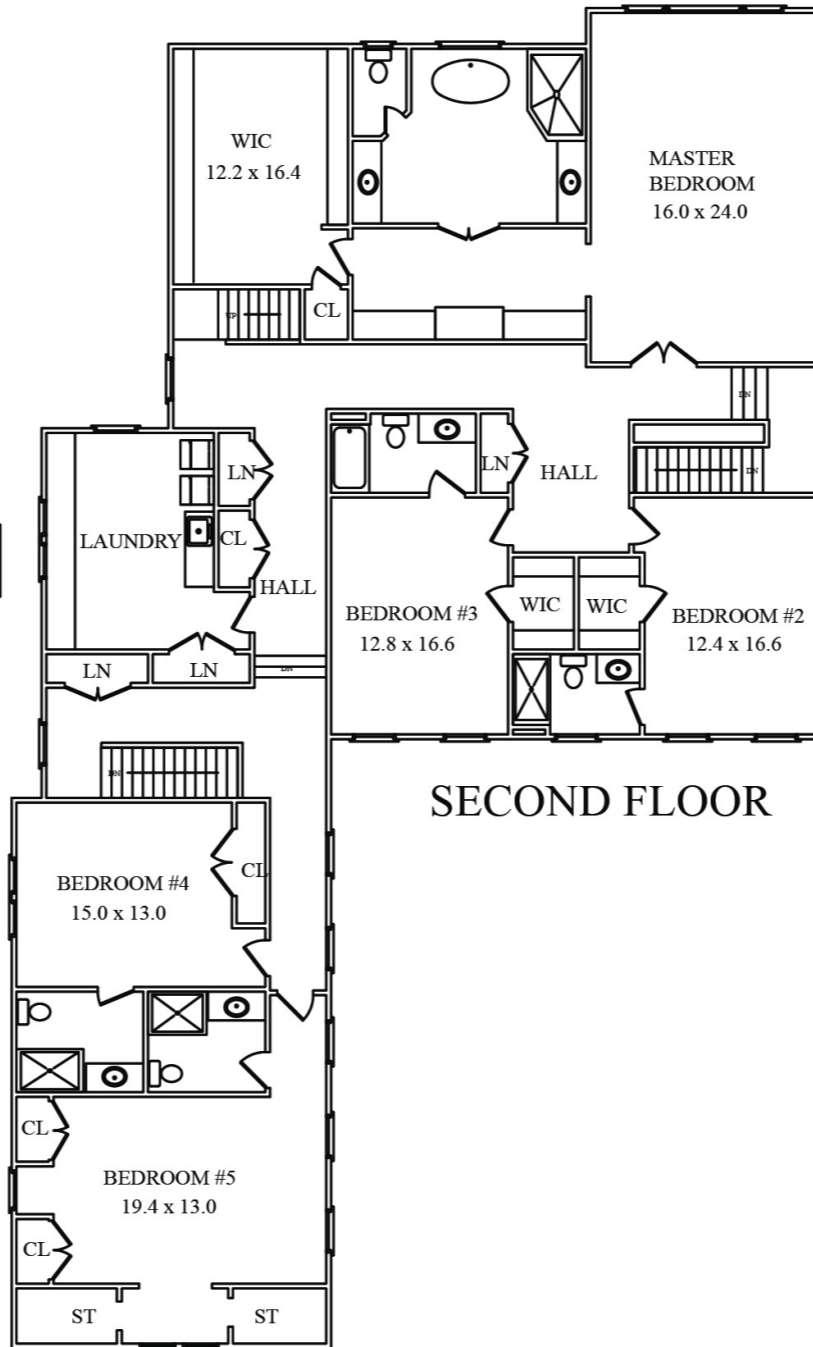
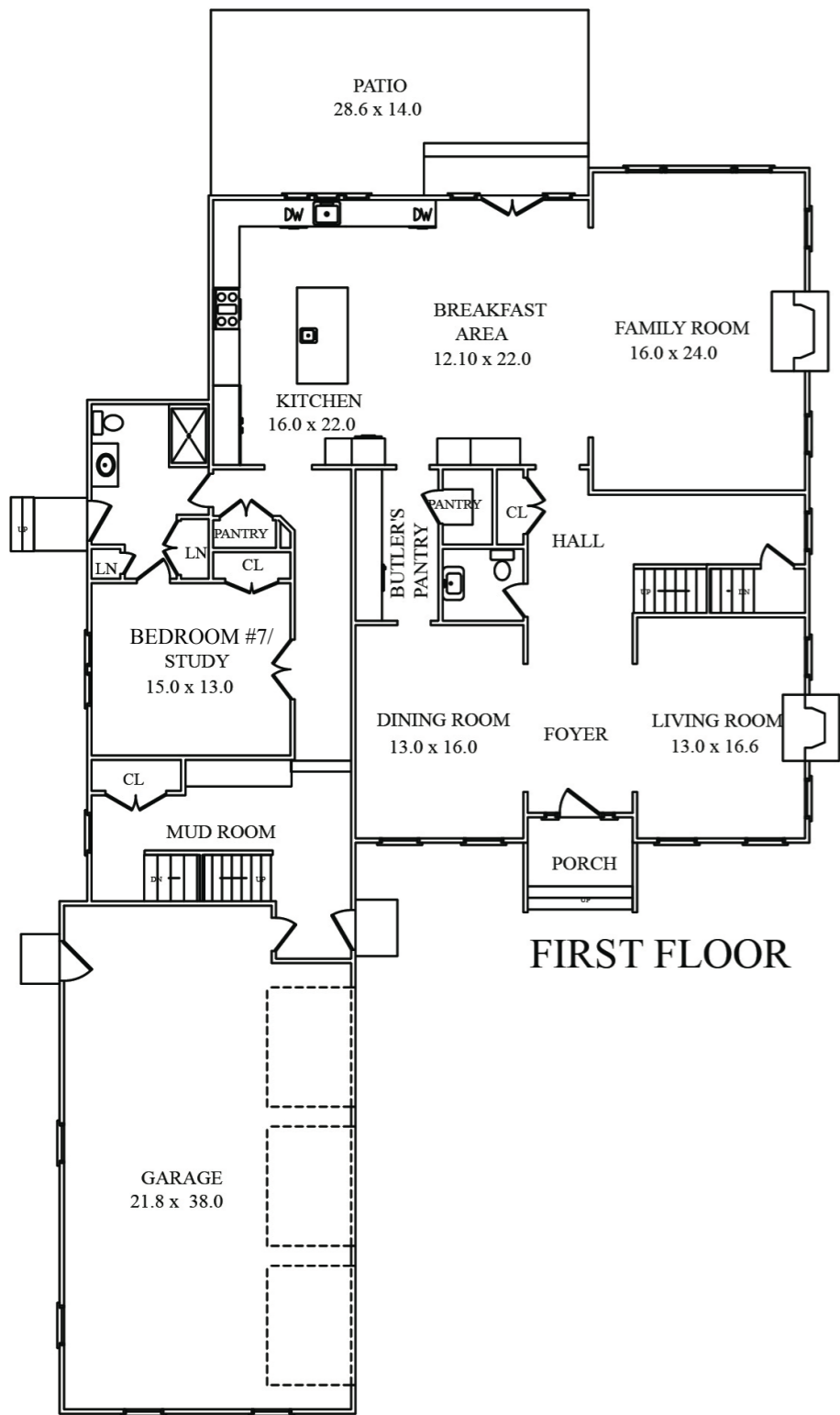
- Board and Batten exterior with standing seam copper/silver detail
- Lighted cupola
- Professionally landscaped 1+ acre flat, fully fenced lot featuring travertine and bluestone patio with outdoor fire pit and built-in 48" Linx grill, 900 square foot Blue Haven Gunite salt water heated pool, outdoor speakers by pool and patio, children's playset, Green Giant privacy hedges, exterior lighting, underground sprinkler system
- 3-car garage with electric doors, built-in shelving, 4 windows and separate door to side yard

## Additional Features/Upgrades

- 4-Zone forced air HVAC
- 2 High recovery 75-gallon hot water tanks with circulator
- Central vacuum
- Generac backup generator
- Enhanced security system with glass break sensors, motion sensors, radio back-up for signal and 2<sup>nd</sup> floor coverage on all windows with roof access
- Custom mahogany front and side doors
- Baldwin hardware throughout
- 10' ceilings throughout
- 7" wide plank solid oak floors throughout
- 10 1/2" crown moldings on first level, 6 1/2" on second level, 7" base moldings throughout
- Sonos audio system installed with speakers throughout first floor, in master bedroom and by patio and pool
- All lights on dimmers
- Upgraded Restoration Hardware light fixtures throughout
- Restoration Hardware Roman shades and blinds throughout







NOT TO SCALE - This floor plan is provided for illustration purposes only.  
 Room positions and dimensions are approximate and should be independently measured for accuracy

