

26 RANDALL DRIVE | SHORT HILLS, NJ



kww PREMIER
PROPERTIES
KELLERWILLIAMS.

Each Keller Williams office is individually owned and operated.

sueadler 
THE #1 KELLER WILLIAMS TEAM IN NEW JERSEY **team**

Welcome to 26 Randall Drive! It is not every day that a home and property of this caliber comes on the market. Don't miss this exceptional opportunity for the buyer seeking an extraordinarily designed custom home, with California-style indoor/outdoor living! Drive up to view this beautifully situated expanded ranch, a vision of perfect proportion and detail. The stunning front entrance is graced by a charming front porch with stone flooring and a stately mahogany French double door entry. Enter the spacious and elegant Entry Foyer and prepare to be overwhelmed by the sheer elegance, light and scale of this home. The Entry Foyer includes stunning hardwood floors, elegant wainscoting, chic designer light fixture and gorgeous views of both the Office and Living Room, as well as views to the secluded back patio and yard, with incredible in-ground pool!





Working from home is a dream in the graceful Office featuring darling double French doors at the entry. Move into the sun-drenched step down Living Room with an exquisite statement fireplace and a beautiful bay window with views of the stunning property. Proceed into the nearby formal Dining Room with magnificent wainscoting, gorgeous windows and plenty of space to host family gatherings and gourmet dinners. The Dining Room connects easily to the impressive Family Room featuring a lovely stone fireplace and access to the breathtaking Sun Room. This tranquil and breezy space, with stone flooring and tray ceiling, exudes relaxation and is the perfect spot for sipping cocktails with friends and accessing the astounding property beyond. Flow easily into the Gourmet Chef's Kitchen which will satisfy any cook's desire. Custom crisp cabinetry with an enormous custom island, magnificent granite countertops, designer lighting and top of the line stainless steel appliances round out the sophistication of this space. A custom Desk Area is sure to be "command central" for any busy family. A huge Breakfast Room, with plenty of room to accommodate a table for 10, makes mealtime a snap. Take in the backyard view from the Breakfast Room with oversized sliding doors leading out to the outdoor entertaining space. Storage abounds in the well-appointed Butler's Pantry perfect for mixing cocktails. Two Powder Rooms (renovated to perfection) and the BEST Laundry/Mudroom (with TONS of storage and a convenient side entrance door) round out the First Level living space.





When it's time to retire for the evening, stroll down the hallway through the stately double doors leading to the extraordinary Master Bedroom Suite. The immensely private and spacious Master Bedroom Suite exudes relaxation and the ultimate in bliss. Two Walk-In Closets make getting ready for the evening sublime. A spa-like Master Bathroom, complete with double vanity, chic soaking tub and a huge shower, make this Master Bedroom Suite the best in form and function. Ensuite Bedroom #2, steeped in sunlight and with a huge closet and wonderful custom bath, rounds out the First Level bedroom area. Bedrooms #3 through #5 occupy the Second Level. Tons of closet space (1 Walk In) and state of the art baths make the Second Level superb.

The real star of this property is the mind-blowing outdoor entertaining space easily accessed from either the Sun Room or Chef's Kitchen. Two enormous bluestone patios, complete with areas for al fresco dining, lounging and planting, and a gorgeous free form gunite pool are sure to make your home "party headquarters" this summer. Any family is sure to enjoy endless sunsets and special family gatherings in this incredible outdoor entertaining area.

And there's more... The massive Lower Level will provide endless hours of family entertainment. Equipped with a Recreation Room, Game Room, Exercise Room, Media Room, potential Nanny Suite and abundant storage, the Lower Level provides all the space you need for any pursuit.

I N S I D E + O U T

FIRST LEVEL

- Entry Foyer featuring elegant solid mahogany Norwood double doors with high end solid bronze Emtek doorknobs at entry, hardwood floors, wainscoting, decorative crown molding, flush mount light fixture with gold leaf and crystal detail, recessed lighting, wood blinds, double door Coat Closet, stairways to 2nd Level
- Office featuring double French doors at entry, hardwood floors, crown molding, baseboard molding, Closet with folding doors, doorway to rear bedroom area hallway, wood blinds
- Powder Room featuring marble tile flooring, custom wood vanity with marble countertop, 2 sconces, Linen Closet, Kohler toilet
- Step Down Living Room featuring hardwood floors, large bay window, fireplace with stone surround and custom millwork mantle, custom built ins with concealed storage and speakers, recessed lighting, decorative crown molding, baseboard molding
- Dining Room featuring hardwood floors, wainscoting with picture ledge, bay window, chandelier, swing door and direct access to Butler's Pantry
- Family Room featuring hardwood floors, fireplace with stone surround and custom millwork mantle, recessed lighting, double French doors with floor to ceiling sidelites to Sun Room, walls with raised moldings, crown molding, baseboard molding
- Step Down Sun Room featuring stone flooring, Anderson windows/doors at 3 exposures overlooking patios and pool, inset raised ceiling, recessed lighting, ceiling fan, baseboard molding, crown molding, sliding doors to Patio
- Gourmet Chef's Kitchen featuring wood look tile flooring, custom transitional style white cabinetry including glass door cabinetry, granite countertops, hand-cut subway tile backsplash, stainless Elkay sink, commercial fixture, sleek navy oversized island with granite countertops, storage, 2nd Elkay stainless sink, commercial fixture and seating for 4 or 5, pendant light fixtures over island, recessed lighting, sconces, Thermador Stainless Refrigerator/Freezer, Wolf stainless wall oven, Bosch stainless dishwasher, Miele stainless dishwasher at island, Wolf stainless 6 burner oven/range, Wolf induction cooktop, custom Desk Area with open and concealed storage, in ceiling speakers, door to garage, Pantry with shelving, staircase to 2nd Level
- Breakfast Room featuring sliding doors to Patio and Pool, wood look tile flooring, wainscoting, recessed lighting, crown molding, baseboard molding
- Butler's Pantry featuring wood look floor tile, custom cabinetry with glass doors, bar sink with gooseneck fixture, beverage refrigerator, recessed lighting
- Half Bathroom off Butler's Pantry featuring tile flooring, wash basin vanity, wainscoting, flush mount light fixture, crown molding, baseboard molding, sconces, Toto toilet
- Laundry/Mud Room featuring tile flooring, radiant heat, custom built cabinetry and storage, quartz countertop, stainless sink, LG front loader washer and

- dryer, Walk In Pantry, double door Coat Closet, pull down ironing board, flush mount light fixture, door to side driveway area, wood blinds
- 3 car garage with electric doors

1st LEVEL BEDROOM AREA

- Rear Hallway featuring double doors at entry, hardwood floors, double door Closet, recessed lighting
- Master Bedroom Suite featuring hardwood floors, baseboard molding, crown molding, wood blinds, designer flush mount light fixture, 2nd flush mount light fixture, 2 Walk In Closets with custom adjustable storage and drawers, Master Bathroom featuring marble floor tile, custom double vanity with marble countertop, 2 medicine cabinets, recessed lighting, sconces, soaking tub, Toto toilet, frameless glass door shower with marble tile surround, rain shower head, crown molding, baseboard molding, wood blinds, window overlooking private backyard
- Ensuite Bedroom #2 featuring hardwood floors, double sized Closet with folding doors, crown molding, baseboard molding, flush mount light fixture, wood blinds, Ensuite Bathroom featuring marble tile flooring, custom double vanity with marble countertop, bath/shower combination with tumbled tile surround, 2 sconces, wood blinds, 4 large windows for natural light

SECOND LEVEL

- Second Level landing featuring hardwood floors, recessed lighting, baseboard molding, crown molding, wood blinds, Linen Closet, 2nd Linen Closet, 2 doors to large separate attic storage areas
- Ensuite Bedroom #3 featuring hardwood floors, baseboard molding, crown molding, Walk In Closet, double door Closet, flush mount light fixture, Ensuite Bathroom featuring designer floor tile, custom wood vanity with marble countertop, frameless glass door shower with marble tile surround, Kohler toilet, crown molding, baseboard molding, recessed lighting, sconces
- Bedroom #4 featuring hardwood floors, baseboard molding, crown molding, double door Closet, flush mount light fixture
- Full Hall Bathroom featuring floor tile, custom double vanity with marble countertop, recessed lighting, sconces, frameless glass door shower with tile surround and rain shower head, Kohler toilet, wood blinds
- Bedroom #5 featuring hardwood floors, baseboard molding, crown molding, 2 Closets, flush mount light fixture, wood blinds

LOWER LEVEL

- Carpeted staircase to Lower Level
- Recreation Room/Game Room/Children's Art Studio featuring tile flooring, paneled walls, multiple storage and utility closets, drop ceiling with lighting
- Media Room featuring wall to wall Berber carpeting, door to backyard, recessed lighting, Closet
- Exercise Room featuring carpeting, paneling, Closet, recessed lighting

- Ensuite Guest Bedroom #6 featuring Closet, carpeting, recessed lighting, baseboard molding, Ensuite Bathroom featuring tile flooring, bath/shower combination with tile surround, basin style sink, American Standard toilet, lantern, medicine cabinet
- Utility Room

FRONT YARD + BACKYARD

- Covered front porch with stone flooring
- .69 Acre
- Meticulously landscaped with mature trees, blooming perennials for immense privacy and rare 20 year old Japanese maple
- Professional outdoor lighting in front and back
- 2 bluestone patios
- Stone and brick retaining walls
- Gunite pool
- Western sunset views

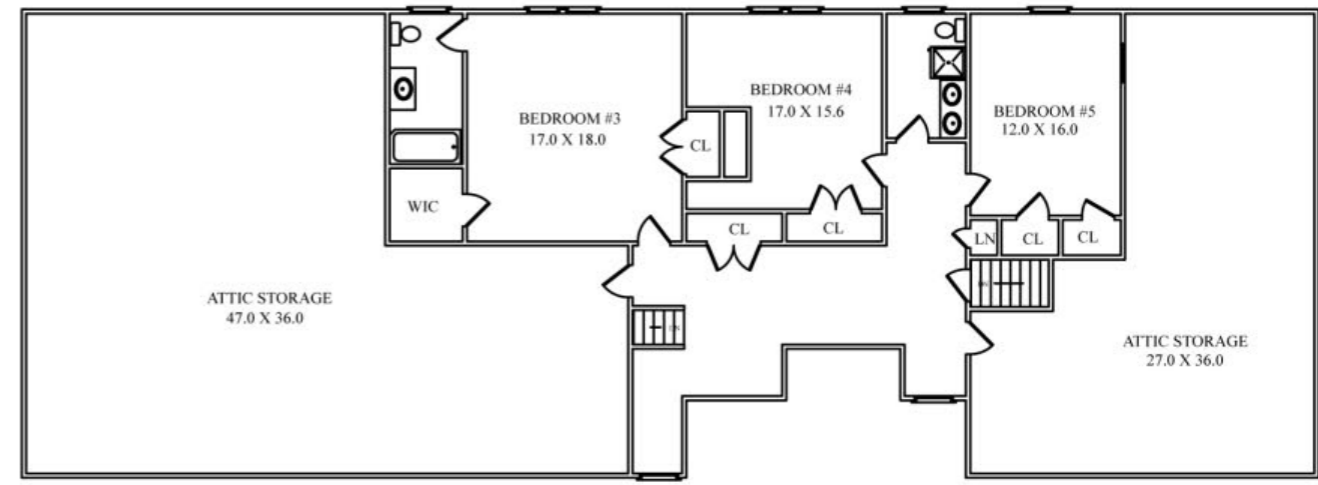
ADDITIONAL FEATURES + UPGRADES

- 8,050 square feet
- All 1st and 2nd floor bathrooms renovated
- Master Suite and Kitchen renovation completed 2017
- Direct access into home with no stairs from Garage to Master Suite
- Steel beam construction in length of the house
- New solid wood doors and freshly painted throughout
- Extra wide doorways
- Surround sound speakers in Kitchen and outdoor patios (control panel inside walk in Kitchen Pantry)
- All LED lighting
- Heavily insulated walls throughout, making for energy efficiency and extra sound proofing
- Short distance to Hartshorn Elementary
- New sump pump
- All new electric
- 3 zone AC/Heat
- 2 new hot water heaters

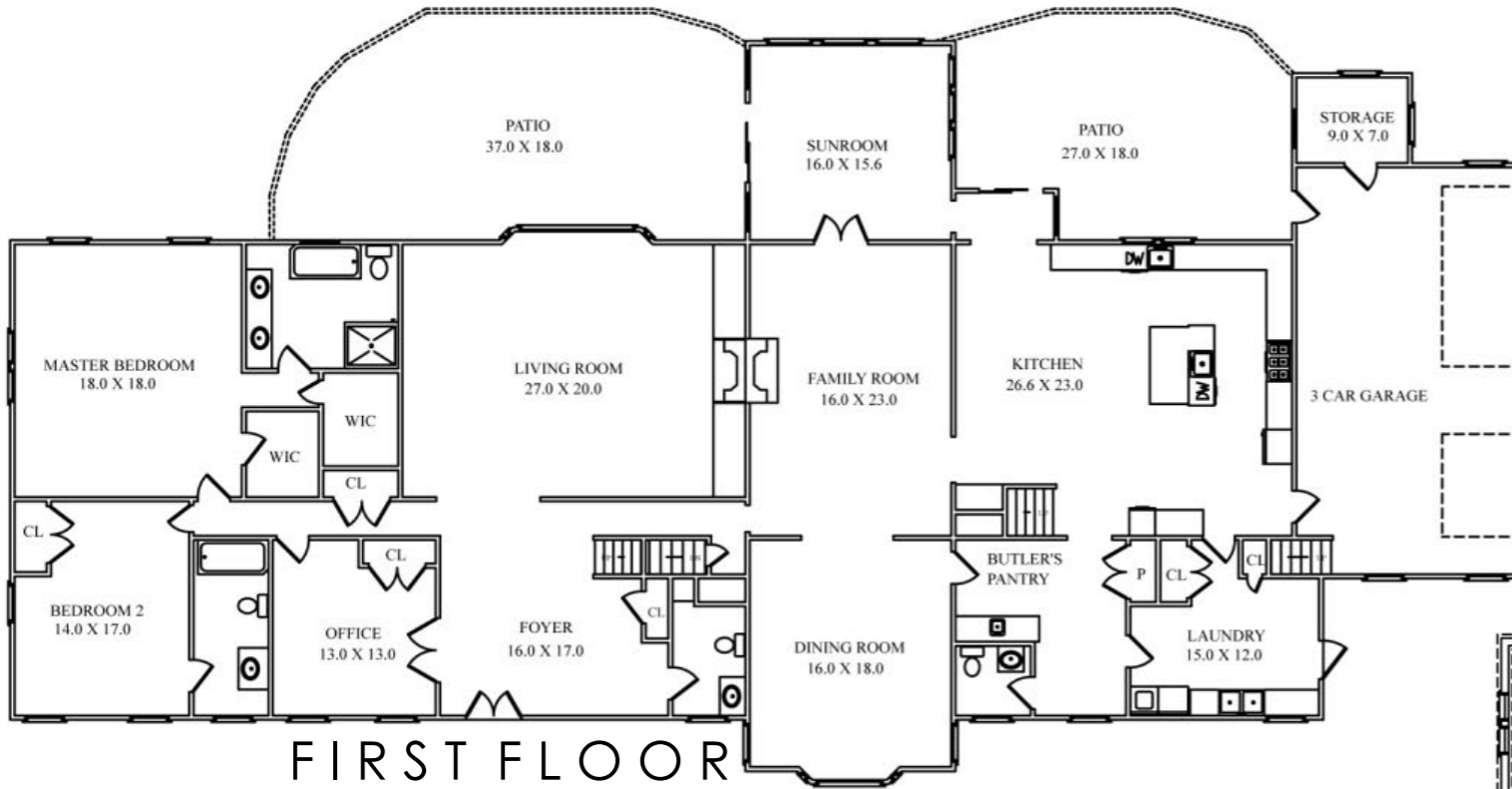


26 Randall Drive is a dream home in every way - just minutes from Hartshorn School, NYC transportation, luxury shopping and downtown Millburn, this home is one of Short Hill's greatest treasures!

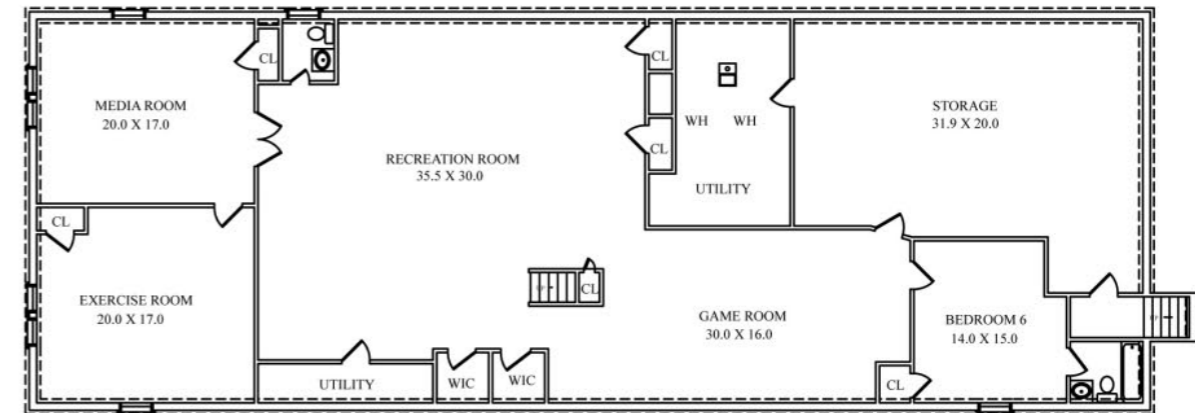




SECOND FLOOR



FIRST FLOOR



LOWER LEVEL

THE FLOORPLAN

NOT TO SCALE - This floor plan is provided for illustration purposes only.
Room positions and dimensions are approximate and should be independently measured for accuracy.



sueadler 
THE #1 KELLER WILLIAMS TEAM IN NEW JERSEY **team**

CELL: 973.936.9129
OFFICE: 973.376.0033 x101
admin@sueadler.com
sueadler.com/26randall

kw PREMIER
PROPERTIES
KELLERWILLIAMS.