

148 LAFAYETTE AVENUE | CHATHAM, NJ



kw PREMIER
PROPERTIES
KELLERWILLIAMS

Each Keller Williams office is individually owned and operated.

sueadler 
THE #1 KELLER WILLIAMS TEAM IN NEW JERSEY team



Welcome to 148 Lafayette Avenue! This charming and pristine 3 Bedroom, 2 Bath in sought after Chatham hits all the right notes. Enjoy all this home has to offer with top-notch schools, close to fantastic shopping and restaurants and NYC Midtown Direct train.

Step inside the welcoming front door to find the blissful, sun drenched Living Room with gleaming hardwood floors and a stunning statement fireplace. In addition to the front entrance, you have the option of entering through the massive Breezeway/Mudroom perfect for storing shoes, coats and sports equipment. From the Living Room, flow easily into the light and airy Sun Room perfect for sipping cocktails on a summer evening. Dinner parties are a dream in the luminous Dining Room ready for entertaining family and friends. Gourmet meals are a snap in the picture perfect Kitchen featuring wood cabinetry, ample counter space and high-end stainless steel appliances. Walk down the hallway to find a roomy bedroom with hardwood floors, plenty of light and closet space. A tasteful Full Bath rounds out this level.





Walk upstairs to find generously sized Bedrooms 2 and 3 gleaming with natural light. The Second Floor boasts tons of closet space and storage. The Bedrooms share the perfectly appointed Hall Full Bath.

And there's more! The unfinished Lower Level has plenty of potential for a Playroom, Recreation Room and/or Office. Even better, don't miss the private and flat backyard with a huge paver patio for entertaining. Whether it's al fresco dining or hosting family and friends, you will love spending time in this backyard oasis.

With its incredible neighborhood, top notch schools, Midtown Direct Train and convenience to fantastic shopping and restaurants, 148 Lafayette is an absolute must see!



INSIDE & OUT

FIRST LEVEL

- Vestibule featuring flagstone flooring, bead board ceiling, screens and front door
- Living Room featuring hardwood floors, fireplace with custom millwork mantle with stone surround and hearth, crown molding, baseboard molding, door to Sunroom, 2 windows
- Sunroom featuring hardwood floors, windows at 3 exposures, brick accent wall, curtains and blinds
- Dining Room featuring hardwood floors, chair rail, crown molding, baseboard molding, chandelier, 2 oversized windows
- Staircase with runner to 2nd Level, Coat Closet
- Pantry Closet with floor to ceiling shelving
- Kitchen featuring tile floor, wood cabinetry, laminate countertop and backsplash, double sink, bread box, Bosch stainless dishwasher, LG stainless microwave, Sub Zero refrigerator, Viking stainless oven and Viking 4-burner cooktop, recessed lighting, door to Mudroom/Breezeway
- Mudroom/Breezeway featuring tile flooring, windows at 3 exposures, door to outdoor patio, door to garage, door to front driveway, ceiling fan/light
- 1 car attached garage
- Bedroom #1 featuring hardwood floors, 2 windows, baseboard molding, closet
- Full Bathroom featuring tile flooring, tiled walls, vanity with laminate countertop, shower over tub with tile surround, 3 light sconce, built in cabinet

SECOND LEVEL

- Bedroom #2 featuring hardwood floors, vaulted ceiling, eave storage, double door closet, flush mount light fixture
- Back Hallway featuring hardwood floors, 2 closets, flush mount light fixture, eave storage
- Full Bathroom featuring tile flooring, tiled walls, vanity with laminate countertop, shower over tub with tile surround, 3 light sconce, built in cabinet
- Bedroom #3 featuring hardwood floors, vaulted ceiling

LOWER LEVEL

- Unfinished Lower Level with tons of potential for Recreation Room, Playroom, Office
- Maytag Washer and Dryer
- Double basin utility sink

ADDITIONAL FEATURES

- Generator
- Maintenance free siding
- Heat/AC, 1 zone
- Sump pump

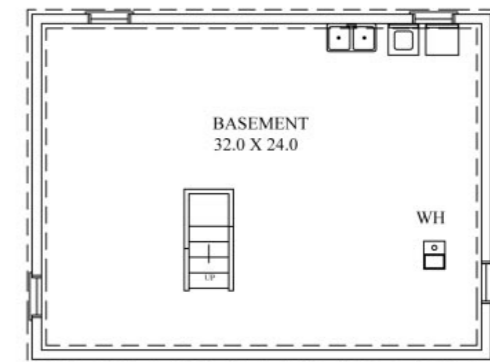
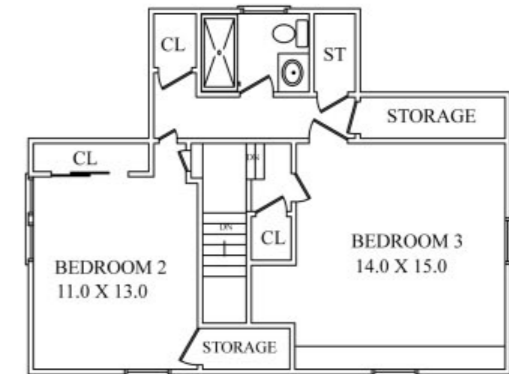
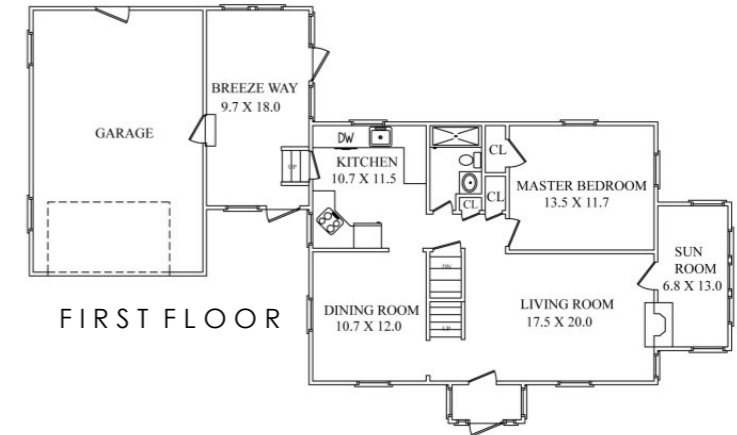
BACKYARD

- New oversized paver patio
- Fully fenced in flat yard
- Vegetable garden
- Irrigation



CELL: 973.936.9129
OFFICE: 973.376.0033 x101
info@sueadler.com
sueadler.com/148lafayette

FLOORPLAN



The information contained herein has been obtained through sources deemed reliable by The Sue Adler Team, but cannot be guaranteed for its accuracy. We recommend to the buyer that any information, which is of special interest, should be obtained through independent verification. ALL MEASUREMENTS ARE APPROXIMATE.