

459 HOMESTEAD PLACE | UNION, NEW JERSEY



kw PREMIER
PROPERTIES
KELLERWILLIAMS

Each Keller Williams office is individually owned and operated.

sueadler 
THE #1 KELLER WILLIAMS TEAM IN NEW JERSEY team



Move right in to this hi-tech 5 bedroom, 3 bathroom custom colonial with the perfect combination of modern convenience and vintage charm! Built in 2014, this home is in perfect condition and has an exceptional location close to Union Train Station, Washington Elementary School, Kawameeh Middle School, and close to Galloping Hill Park and Golf Course. 459 Homestead Place is exceptional!

Enter the Front Door and prepare to be amazed. The bright and airy Foyer has multi-story ceilings and a stunning decorative picture window with gorgeous detail. Architectural details abound in the exceptional Living Room with gleaming hardwood floors and an abundance of natural light. The elegant formal Dining Room features a handmade crystal chandelier, making any dinner party an extravagant affair. The open layout allows you to flow easily into the extraordinary Chef's Gourmet Kitchen, which is truly the showpiece of the home. Crisp, white cabinets, granite countertops and top of the line stainless steel appliances make the kitchen the ultimate in function and style. And as if that wasn't enough, the open layout to the Family Room make entertaining easy. The gorgeous fireplace flanked by French doors flow to the huge deck making the home perfect for al fresco dinner parties or simply sipping cocktails with friends. A Bedroom on this level is perfect for an au pair or out of town guests. A Full Hallway Bath rounds out the First Level.





Ready to retire for the evening? Follow the staircase up to the spacious Second Level to find the Master Bedroom Suite which boasts tons of sunlight, gorgeous architectural details and huge dual Walk-In Closet/Dressing Areas with custom crisp white cabinetry to ensure that nothing is out of place. The spa-like marble Master Bathroom is perfection with luxurious marble floors, cool gray vanities with marble countertops, and a spacious marble walk-in shower. Down the Hallway you will find additional sunlit and roomy Bedrooms 2 and 3 and 4 with gigantic closets for plenty of storage. Laundry on the second floor adds to the ease and convenience of this home. A deluxe Full Hall Bath and huge linen closet round out this level.

And that's not all! This hi-tech smart home equipped with Nest allows you to control your home from your keypad or phone. Whether it's watching your property while you're away or getting an alert that your child is home from school, this hi-tech homes does it all. And there's more! The huge deck overlooking the property has room for grilling with the family or hosting a party with friends. Don't miss this great opportunity to own a home just steps from NYC transportation, schools and recreation! 459 Homestead Place is an absolute must see and won't last!



INSIDE & OUT

THE FLOORPLANS

FIRST LEVEL

- Smart Home with Nest keypad Entry Door
- Entry Foyer featuring hardwood floors, baseboard molding, multi-story ceiling, oversized decorative picture window, designer chandelier, coat closet with hanging and shelving, traditional staircase to Second Level
- Living Room featuring hardwood floors, baseboard molding, crown molding, designer pendant light fixture, decorative picture window, double hung windows with wood blinds
- Dining Room featuring hardwood floors, baseboard molding, crown molding, designer handmade chandelier, double hung windows with wood blinds
- Family Room featuring hardwood floors, baseboard molding, crown molding, recessed lighting, gas fireplace with stone and custom white millwork surround flanked by French Doors to outdoor wood deck, decorative picture window, double hung windows with blinds, open layout to Kitchen
- Gourmet Chef's Kitchen featuring hardwood floors, baseboard molding, crown molding, recessed lighting, custom built-in cabinetry with granite countertops, subway tile backsplash with decorative glass tile inlay, GE stainless steel range, GE stainless steel dishwasher, GE stainless steel built-in microwave, Adora stainless steel Refrigerator/Freezer, island with seating for 4 and storage, designer pendant light fixtures over island, Food Pantry with floor to ceiling shelving, separate Butler's Pantry/Wet Bar Area with built-in custom cabinetry, sink, open wine storage
- Breakfast Nook featuring hardwood floors, baseboard molding, crown molding, recessed lighting, designer ceiling fan with light, double hung windows with custom wood blinds
- Full Hallway Bathroom featuring tile flooring, tile baseboard molding, flush mount light fixture, vanity with storage, mirror, sconce, shower with tile surround, recessed lighting and built-in shelving, double hung window with wood blinds
- Bedroom #5 featuring hardwood floors, baseboard molding, crown molding, flush mount light fixture, dual double door closets, double hung windows with blinds

SECOND LEVEL

- Traditional wood staircase to Second Level
- Second Level Landing/Hallway featuring hardwood floors, baseboard molding, crown molding, recessed lighting, oversized picture window, wood railing overlooking Main Level, linen closet with floor to ceiling shelving
- Hallway Laundry Area in double door closet with LG front load washer and LG front load dryer, flush mount light fixture, shelving, utility sink
- Master Bedroom featuring hardwood floors, baseboard molding, decorative tray ceiling, recessed lighting, double hung windows with blinds, decorative picture window, dual Walk-In Closet/Dressing Areas with custom built-in white cabinetry

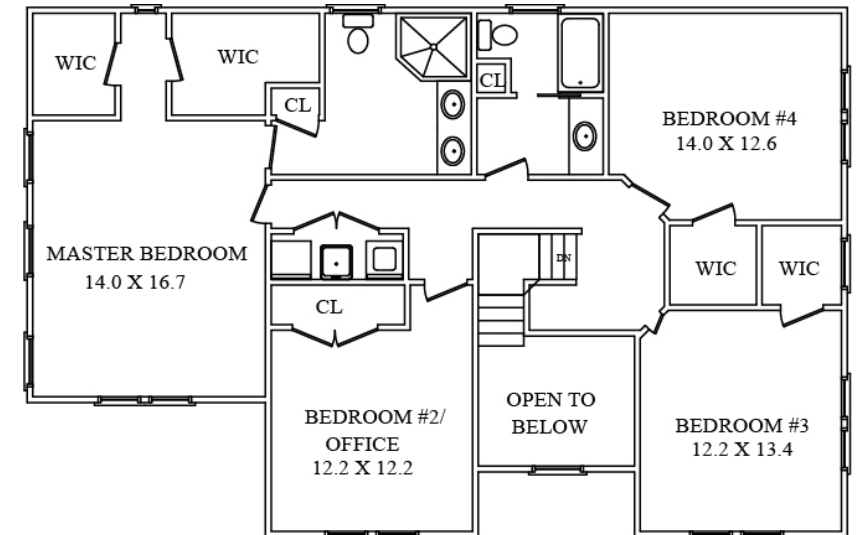
- Master Bathroom featuring marble floors, marble baseboard molding, recessed lighting, custom grey vanity with dual sinks, storage and marble countertops, mirror on one exposure, 6 light sconce, walk-in shower with stone floor and marble surround, rain showerhead, built-in shelving and recessed lighting, linen closet with floor to ceiling shelving
- Bedroom #2/Office featuring hardwood floors, baseboard molding, flush mount light fixture, double hung windows with blinds, double door closet
- Bedroom #3 featuring hardwood floors, baseboard molding, flush mount light fixture, double hung windows with blinds, decorative picture window, walk-in closet
- Bedroom #4 featuring hardwood floors, baseboard molding, flush mount light fixture, double hung windows with blinds, walk-in closet
- Full Hallway Bathroom featuring tile flooring, tile baseboard molding, recessed lighting, custom vanity with storage and marble countertop, mirror, 6 light sconce, separate toilet area with pocket door, tub/shower with subway tile surround and built-in marble shelving, flush mount light fixture, linen closet

LOWER LEVEL

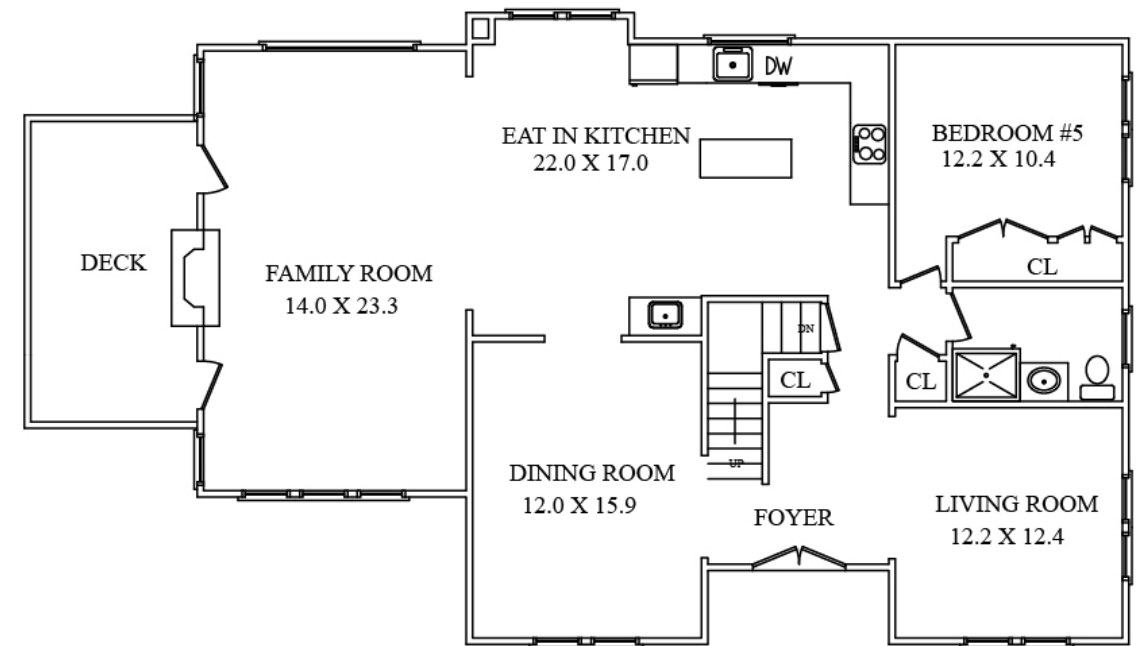
- Traditional wood staircase to Lower Level
- Unfinished Storage Area featuring painted cement floors with closet for additional storage

ADDITIONAL FEATURES & UPGRADES

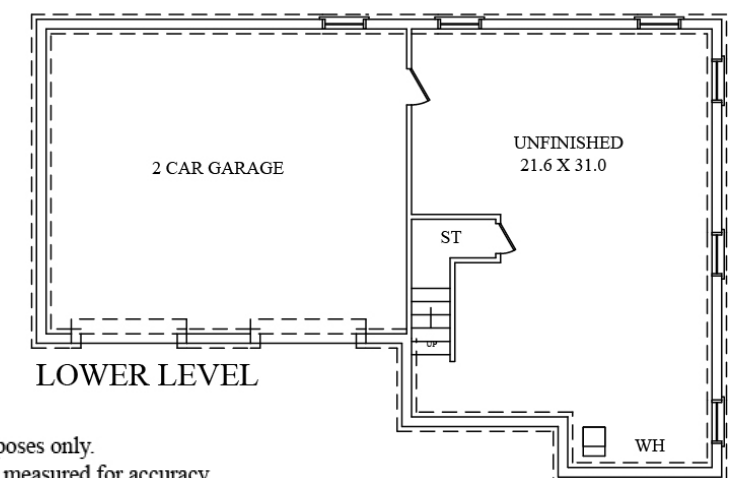
- Smart Home featuring Nest controlling all features of home from keypad and/or smart phone
- Exterior cameras
- Central vacuum
- Dual zone, high efficiency HVAC
- Fully fenced-in private back yard
- Wood deck with area for grilling and seating
- Electrified 2 car garage
- Paver driveway
- Alarm
- Irrigation – 6 zone
- Walking distance to Kawameeh Middle School and Washington Elementary School
- Close to Union Township Train
- Close to Galloping Hill Park and Golf Course, Suburban Golf Club and Kean University



SECOND FLOOR



FIRST FLOOR



LOWER LEVEL



CELL: 973.936.9129

OFFICE: 973.376.0033 x101

info@sueadler.com

sueadler.com/459Homestead

NOT TO SCALE - This floor plan is provided for illustration purposes only.
Room positions and dimensions are approximate and should be independently measured for accuracy