

kw PREMIER
PROPERTIES

KELLER WILLIAMS

Each Keller Williams office is individually owned and operated.

sueadler 
THE #1 KELLER WILLIAMS TEAM IN NEW JERSEY **team**

241 SUMMIT AVENUE
SUMMIT, NJ



Spacious, bright and flexible are the perfect descriptors for the special home at 241 Summit Avenue. Here you'll find 5 bedrooms, 3 ½ baths and so many options for customization to meet your specific needs. Freshly painted inside and out, this unique residence provides a neutral canvas for you to make all your own.

Upon arrival, step through the welcoming entry foyer to get your first glimpse of all that this home has to offer. Beautifully maintained hardwood floors lead you to each of the living and dining spaces found on the first level. Proceed through an archway to the left to enter the light filled Living Room highlighted by a large picture window, attractive dentil moldings and an impressive fireplace with stone surround that becomes the focal point of the room. It's the perfect place to gather with friends and family before sitting down to an elegant meal in the adjacent Dining Room featuring a large picture window with plantation shutters and a comfortable window seat below. The window is flanked by two built-in units that provide the perfect place for display of your favorite collectibles. Here you'll enjoy easy access to the recently updated eat-in kitchen where crisp white cabinetry is accented by new stainless steel appliances, attractive granite counter tops and a tile backsplash.



Relish the views of the lush greenery in the backyard as you gaze through a large window while simply brewing your morning coffee or as you prepare a full gourmet meal. After dining you'll have your choice of destinations for true relaxation. A pair of doorways off the Living Room lead you to a light filled Sun Room featuring 3 fully windowed walls, a volume beamed ceiling and a charming painted brick accent wall. Cozy up while watching your favorite movie in this inviting room or proceed through the Kitchen door to take a seat on the raised wood deck as you languish among cool breezes on a summer night.



When it's time to retire for the evening, 5 bedrooms and 3½ baths found on 3 different levels await and provide great flexibility for use. Step through the rear hallway to reach Bedroom #1 featuring an en suite bath, cozy sitting room and plenty of closet space. The room is ideal either as first floor Master or Guest Suite. The light filled neighboring Bedroom #2 with carpet and plenty of closet space is also a flexible space that, in addition to use as a traditional bedroom, can be converted for use as a Den, Home Gym or Study. Take the center staircase to the second level to reach 2 more bedrooms (one with en suite ½ bath) - each bright and airy options with charming nooks to explore. A full hallway bath completes the second floor living space.

And there's more.... A finished lower level is home to a large Recreation Room as well as an additional bedroom with en suite full bath... What a perfect private set up for a house guest, live-in nanny or teen aged family member. An unfinished Utility Room with a fully equipped Laundry Area and plenty of additional storage space completes the lower level space. Outdoors, lush lawns and a canopy of mature trees surround an inviting bluestone patio equipped with a gas lit fire pit. Gather here on a cool night to enjoy fun times with friends and family. Nestled on the hillside just to the right you'll find a cozy wood structure that's easily adapted to serve as a child's playhouse, an artist studio or perhaps simply a storage shed...the choice is yours!

Upon viewing, you will undoubtedly see how much the home at 241 Summit Avenue has to offer. With its sought-after location within walking distance to downtown Summit, its numerous upgrades and amenities combined with its flexibility to tailor to your needs, this unique residence is just waiting for you to call it home!



INSIDE & OUT

FIRST LEVEL

- Entry Foyer with hardwood floors, wood door with glass accents, coat closet, recessed lighting; access to center staircase, rear hallway and Living Room
- Living Room with hardwood floors, large picture window with blinds, dentil molding built-in bookcase/display shelving, fireplace with wood mantel and granite hearth; two doorways flanking fireplace lead to Sun Room, broad archway to Dining Room
- Sun Room featuring windows with shades on three sides, carpet, raised ceiling with beams, ceiling fan with light, painted brick accent wall
- Dining Room with hardwood floors, bead board wainscoting, fully windowed wall with plantation shutters flanked by two built-in shelving units, dentil molding, chandelier with ceiling medallion; broad archway to Kitchen
- Kitchen with hardwood floors, crisp white cabinetry with glass fronted accent panels, tile backsplash, granite countertops, stainless steel appliances including Thermador 4-burner gas range with oven below, KitchenAid refrigerator/freezer, Thermador dishwasher, built-in GE Profile microwave, large pantry closet with shelving, stainless steel sink with disposal and window with wood blinds above, bead board wainscoting; doorways to Lower Level and rear wing bedrooms
- Master Bedroom with hardwood floors, crown molding, large picture window with shades, crown molding, ceiling fixture, walk-in closet with shelving, en suite bath featuring faux marble ceramic tile, ceiling fixture, vanity with plantation shuttered window above, storage below, glass enclosed shower with tiled walls, river rock floor, built-in bench and 2 showerheads, recessed lighting, storage nook with shelving
- Bedroom #2 with hardwood floors, large picture window with wood blinds, ceiling fan with light, double door closet with built-in shelving

SECOND LEVEL

- Landing with hardwood floors, 2 sconces, linen closet and attic storage access
- Bedroom #3 with hardwood floors, ceiling fan with light, 3 windows with wood blinds, in window air conditioner, 2 closets, built-in book case, reading nook with window with blinds, hardwood floors, angled ceiling, built-in book case and 2 sconces
- Bedroom #4 with hardwood floors, angled ceiling, ceiling fan with light, 2 built-in book case/display shelving units, closet, en suite ½ bath with ceramic tile floor, vanity with stone top and storage below, window with wood blinds, sitting room with window and hardwood floors
- Full Hall Bathroom with ceramic tile floor, stone topped vanity with mirror and light fixture above, storage below, shower over tub with tiled walls and sliding glass door, exhaust fan and ceiling fixture

LOWER LEVEL

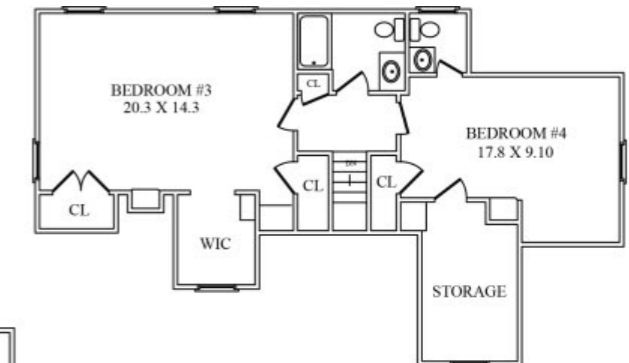
- Recreation Room with carpet and faux wood tiled floor, bead board wainscoting, recessed lighting, crown molding
- Unfinished Utility Room with storage areas and laundry area with Admiral washer, Whirlpool dryer and utility sink; doorway to driveway
- Bedroom #5 with faux wood tile floor, double door closet, grade level window, recessed lighting, en suite bath featuring tile floor, vanity with granite top, framed mirror and light above, storage below, stall shower with tiled walls and accent border, stone floor, and built-in granite topped bench

ADDITIONAL FEATURES + UPGRADES

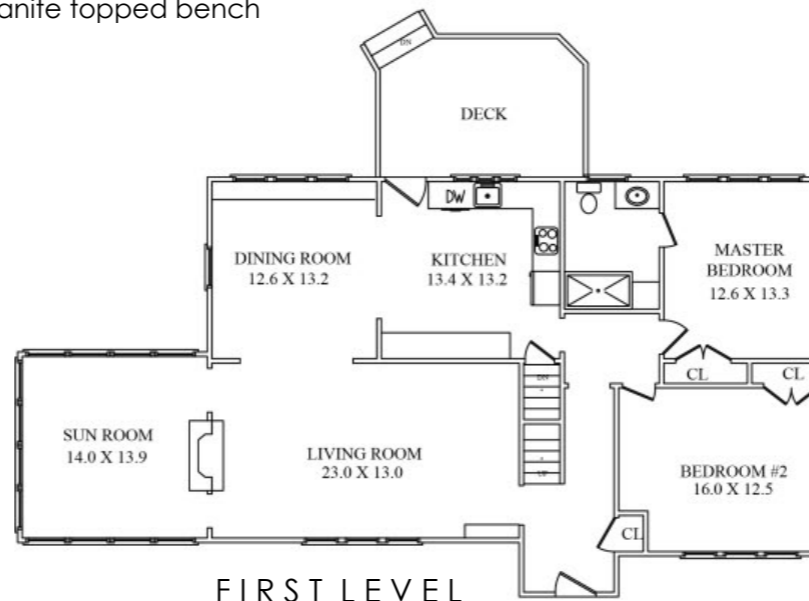
- 2-car garage with electric doors
- Central AC and forced air heating
- Full interior and exterior painting (2018)
- Raised wood deck with Kitchen access
- Lush private backyard property featuring large stone patio with gas fire pit, wooded area with canopy of mature trees, shed/playhouse with multiple options for use, exterior lighting
- Kitchen remodel (2011)



THE FLOORPLAN

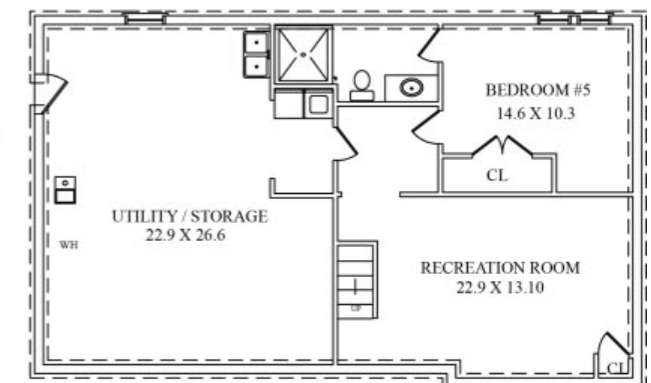


SECOND LEVEL



FIRST LEVEL

LOWER LEVEL



CELL: 973.936.9129
 OFFICE: 973.376.0033 x101
 info@sueadler.com
 sueadler.com/241summit