

3 PIHLMAN PLACE
CHATHAM, NJ



Welcome to 3 Pihlman Place! This charming and immaculate 3 Bedroom, 1 Bath home, on a sought after street and located close to Midtown Direct Train and downtown Chatham, hits all the right notes.

Drive up to 3 Pihlman to find attractive maintenance free siding, delightful shutters and beautiful greenery which all lend to the home's curb appeal. Step inside the welcoming front door to find the blissful, sun drenched Living Room with large windows, hardwood floors and cheery tones. Flow easily into the eat-in Kitchen where preparing meals is a snap. Move easily down the hallway where 2 sunny bedrooms with ample closet space await, one being flexibly used as a Home Office. A tasteful Full Hall Bathroom rounds out this level. On the second level find a spacious loft style Bedroom #3 and a Bonus Room with potential to create a 4th Bedroom, as well.



Back downstairs, take a few steps down from the Kitchen to the Lower Level with plenty of potential for a Recreation Room, Art Studio, etc. A 1 car garage and spacious Laundry/Utility Room with plenty of storage round out this level.

With its incredible neighborhood, top notch schools, New York City Midtown Direct Train and convenience to fantastic shopping and restaurants in Chatham and Madison, 3 Pihlman is an absolute must see!



INSIDE & OUT

FIRST LEVEL

- Living Room featuring hardwood floors, blinds, baseboard molding, crown molding
- Door to side yard
- Kitchen featuring laminate flooring, wood cabinetry, laminate countertop, Frigidaire refrigerator, Hotpoint oven/range, track lighting, blinds, Breakfast Area
- Master Bedroom featuring hardwood floors, baseboard molding, crown molding, blinds, Closet
- Rear hallway with Coat Closet and Linen Closet
- Bedroom #2/Office featuring hardwood floors, baseboard molding, crown molding, Closet, blinds
- Full Hall Bathroom featuring tile flooring, wash basin sink, medicine cabinet, 2 light sconce, shower over tub with tile surround

SECOND LEVEL

- Bedroom #3 featuring wood look laminate flooring, vaulted ceiling, track light fixture, closet
- Bonus Room (Potential Bedroom #4) featuring wood look laminate flooring, vaulted ceiling, track lighting, Closet

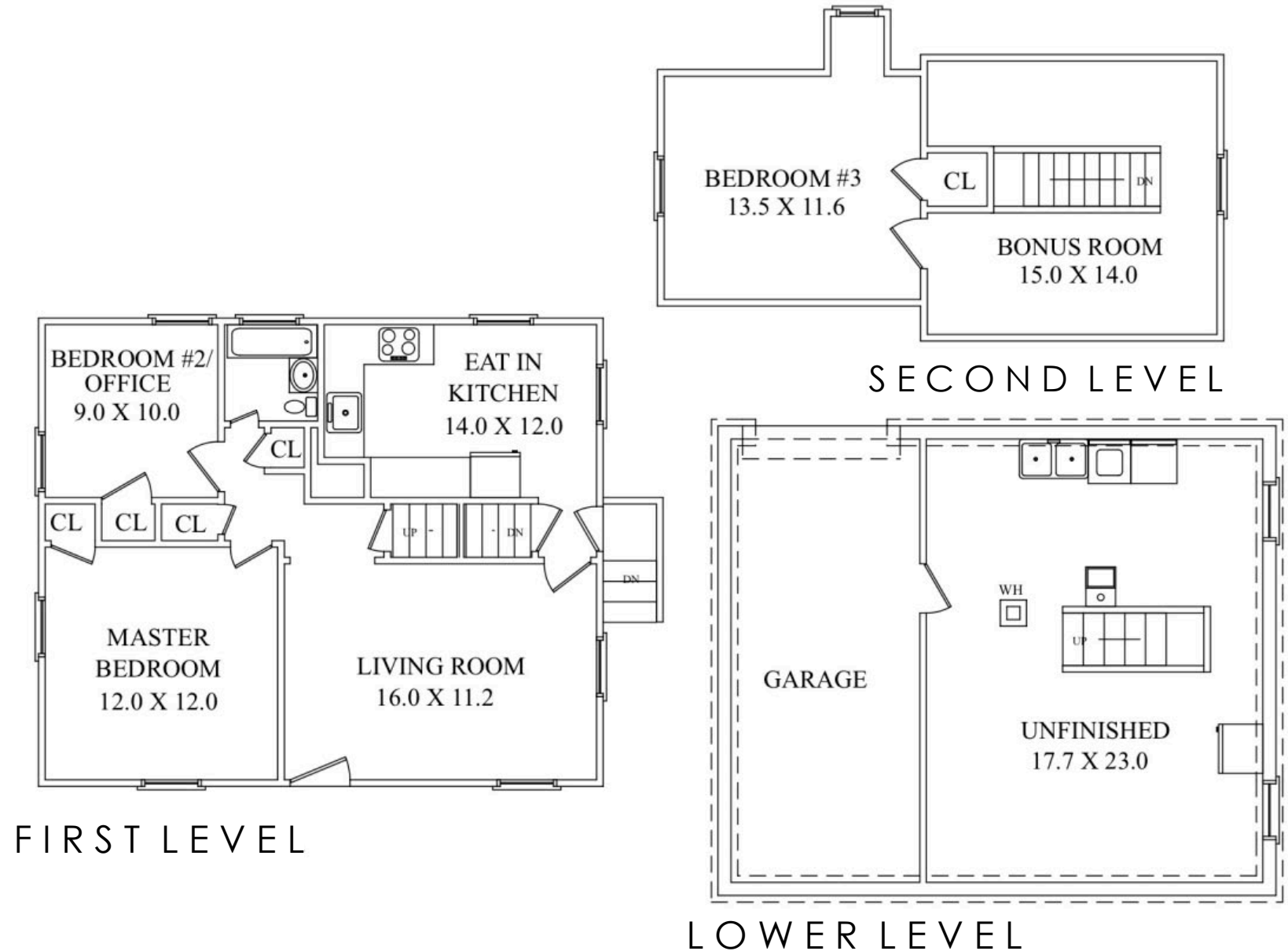
LOWER LEVEL

- Unfinished with potential for "Walk Out" Recreation Room
- Laundry Area with Samsung front loader washer and dryer

FRONT & BACK YARD

- Maintenance free siding
- Central AC

THE FLOORPLAN



FIRST LEVEL

SECOND LEVEL

LOWER LEVEL

CELL: 973.936.9129
OFFICE: 973.376.0033 x101
info@sueadler.com
sueadler.com/3pihlman

sueadler 
THE #1 KELLER WILLIAMS TEAM IN NEW JERSEY **team**