

25 GATEHOUSE COURT
MORRISTOWN, NJ



Welcome to 25 Gatehouse Court, a luxury townhome located in beautiful Moore Estates, a community offering classic elegance and sophisticated amenities for even the most discerning buyer! The open and spacious interior design is evident from the moment you walk through the front door, with updates throughout from top to bottom! Brand new carpeting throughout, you will find a lovely dining area worthy of the finest gourmet meals that greets you, which opens into the wonderful living room where you'll spend time gathered around the lovely fireplace, or enjoying the sunlight streaming in glass-paned door to the covered rear deck. Meals are a breeze to prepare in the fully appointed kitchen and the adjacent breakfast area, which provides the perfect place for a casual meal or a convenient spot to do a little work.





The first floor Master Suite is the perfect place to retire after a long day. There will be plenty of room for all of your designer clothes thanks to the spacious walk in closet and you can relax in the jetted tub in the en-suite Master Bathroom, which also features a glass-enclosed shower and double vanity with plenty of storage. An additional bedroom/office, updated full hall bathroom and convenient mudroom/laundry room rounds out the first floor.

The lower level of this interior townhome unit features a large recreational space that's crafting or hobbies, or hosting friends to watch the big game – the possibilities are endless! This level also includes an additional bedroom with door to rear patio and pond view, full updated bathroom and tons of storage spaces!

Residents of Moore Estates can take advantage of all the amenities of this enclave, including relaxing by the pool, playing tennis with friends and neighbors, keeping fit in the clubhouse fitness room, and walking and biking trails can be found at nearby Loantaka Park. This lovely home in Moore Estates offers an unparalleled lifestyle—maintenance-free living and sophisticated amenities in a country setting, yet still minutes to train, vibrant downtown Morristown and fine dining, shopping, theatre and cultural activities.



INSIDE + OUT

MAIN LEVEL

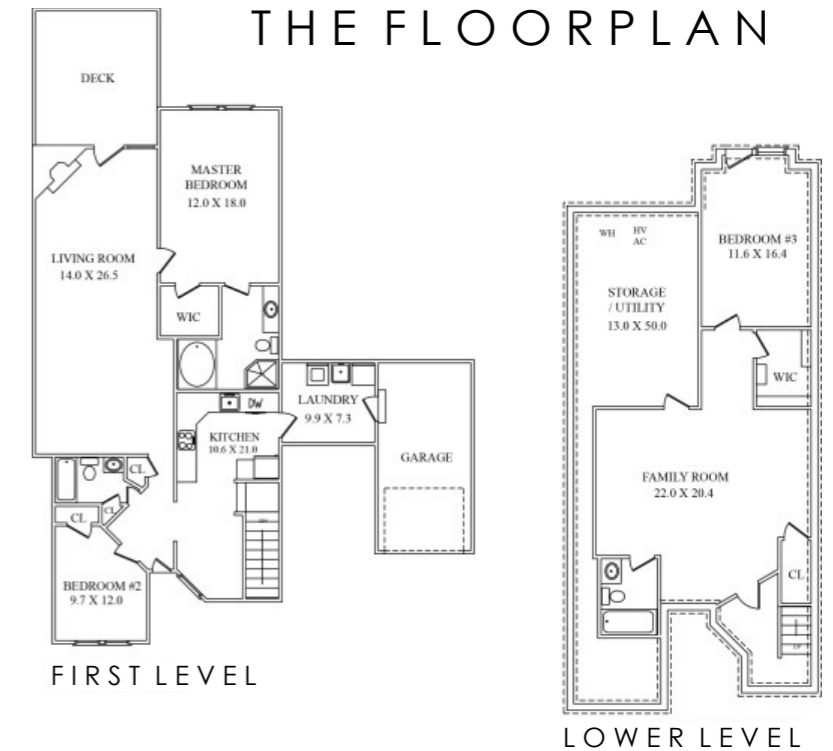
- Entry foyer with tile, light fixture, baseboard molding, coat closet
- Dining Room Area with carpet, baseboard molding, light fixture, recessed lighting
- Living Room with carpet, baseboard molding, recessed lighting, fireplace, door to rear covered deck
- Bedroom #2 with carpet, closet, window, baseboard molding
- Master Bedroom with carpet, window, light fixture, baseboard molding, walk-in closet with built-ins and light fixture
- Master Bathroom with tile floor, double vanity with light fixture above, jetted tub, glass enclosed shower
- Kitchen with hardwood floor, light fixture, windows, breakfast nook, granite countertops, marble tile backsplash, recessed lighting Whirlpool stainless steel appliance suite (dishwasher, refrigerator, range/oven, microwave)
- Laundry Room with hardwood floor, baseboard molding, built in storage, Whirlpool washer and dryer, utility sink, light fixture, access to one car garage
- Full Bathroom with tile floor, vanity with granite top and mirror with light overhead, fan, shower over tub with tiled walls

LOWER LEVEL

- Recreation Room with carpet, recessed lighting, high ceiling
- Bedroom #3 with carpet, baseboard molding, recessed lighting, high ceiling, walk-in closet at entry, walkout to patio
- Full Bathroom with tile floor, vanity with mirror and light overhead, baseboard molding, shower over tub with tiled walls
- Storage/Utility Room with built-in storage and under stairs storage room

ADDITIONAL FEATURES & UPGRADES

- All of the following updates newly done in 2018:
 - Kitchen stainless steel appliances
 - Painted throughout, including ceilings and cabinetry
 - Custom closets
 - Lighting fixtures inside and out
 - Laundry room storage and shelving
 - 3/4 inch solid Brazilian cherry wood 30 year Bella flooring in Kitchen and Laundry
 - Master Bedroom windows
 - Carpet throughout
 - Dimmers throughout
 - Electrical outlets throughout with Decora faceplates
 - Toilets in all bathrooms
 - Locks including deadbolts on front and backdoor
 - Electric outlets on back deck and downstairs patio
 - Recessed lighting upstairs and downstairs
 - All bathrooms have been completely or partially updated and new
 - Panasonic whisper quiet fans in in both guest bathrooms
- Furnace and air conditioning (2013)
- Water softener
- Attached one car garage
- Conveniently located .9 mile from train at Convent Station, 2.5 miles from the Morristown Green and from Madison town center
- Moore Estate community amenities including an outdoor pool, club house, exercise room and tennis courts, as well as walking and biking paths at nearby Loantaka Park
- *Note: Association to seal and stain the front porch and replace roof this year*



CELL: 973.936.9129

OFFICE: 973.376.0033 x101

EMAIL: info@sueadler.com
sueadler.com/25gatehouse