

8 8 M A Y D R I V E
CHATHAM, NJ



sueadler 
THE #1 KELLER WILLIAMS TEAM IN NEW JERSEY **team**

kw PREMIER
PROPERTIES
KELLERWILLIAMS

Each Keller Williams office is individually owned and operated.



Situated on a spectacularly landscaped private lot in the desirable Rolling Hills section of Chatham, this perfectly maintained family home at 88 May Drive is a true gem. Fully updated inside and out, this elegant residence featuring spacious rooms with high end finishes and a fabulous flow for entertaining- both inside and out- is truly move-in ready! The home's meandering bluestone path leads you to the welcoming columned portico that provides the first taste of the brick fronted residence's classic warmth and elegance.



Step into the Entry Foyer highlighted by front-to-back views and newly refinished hardwood floors that lead to each of the living and dining spaces found on the first level. A broad archway to the left leads to an airy Living Room highlighted by a bay window with custom window treatments and an elegant fireplace around which family and guests may gather for a relaxing evening together. Continue on into the expansive Family Room boasting a full wall custom built-in unit with storage cabinets and shelving that surely will become home for your favorite books and cherished collectibles. A fully windowed wall provides spectacular views of the greenery just outside. Gather in this light-filled space before sitting down in the adjacent Dining Room. Here, four decorative columns define this elegant space for dining on gourmet meals prepared in the neighboring chef's dream Kitchen.



Fully renovated in 2010, this spacious Kitchen features custom cherry cabinetry, top-of-the-line stainless appliances accented by chic granite counter tops, built-in banquet seating below a large bay window and a spacious center island/breakfast bar. The space is just perfect for preparation of all your favorite gourmet creations. An elegant Powder Room complete the first level living space.





When it's time to retire at the end of the evening you'll proceed to the grand staircase leading up to the second level where a gallery hallway guides you to the master bedroom suite and 3 additional spacious bedrooms. Luxury surrounds you in the Master Suite that features handsome plantation shutters, abundant closet space and a well-appointed en suite bath. Three additional bedrooms and a full hallway bath on the second level assure privacy and comfort for all family members. Take a walk up to the third level where two additional bedrooms and a full hall bath provide option for use as you see fit...private Guest Suite, Home Office, Art Studio...it's up to you to decide!

And that's not all...the lower level provides plenty of space for all day and night family entertainment and fun. Watch movies in a cozy carpeted Recreation Room featuring a full wall built-in entertainment unit complete with flat screen TV, shelving & storage and a gas fireplace. Play ping-pong or pool in the adjacent Game Room that has easy access to a full bathroom as well as the backyard patio and pool. A Home Office with custom desk and built-in storage cabinets and plenty of unfinished storage options complete the lower level space.

But there's even more...Prepare to be wowed as you step outside to your own serene oasis – the exceptionally private 2-tiered backyard features a brick paver patio surrounding a free form pool and a rolling green lawn sitting below a canopy of mature trees with specimen plantings and colorful flower beds in view. Picture the space with multiple tables and lounge chairs and appetizing smells coming from the barbeque grill as family and friends hop in and out of the inviting fresh water heated pool on a warm summer day. You'll find that vacationing at home has never been more relaxing!



I N S I D E & O U T

FIRST LEVEL

- Entry Foyer with hardwood floors, crown molding, double door coat closet, wood door with leaded glass accents; front to back views with and broad archways to Living Room and Family Room, access to Powder Room, Kitchen and center staircase
- Living Room with hardwood floors, wainscoting, crown molding, recessed lighting, large bay window display ledge, wood blinds, Roman shade and drapery panels, fireplace with wood mantel, brick surround and stone hearth, built-in wall speakers
- Family Room with hardwood floors, crown molding, recessed lighting, fully windowed wall and additional window with custom Roman shades and drapery panels, full wall built-in unit with display shelving and storage cabinets below; open to Dining Room
- Dining Room featuring four decorative columns, hardwood floors, crown molding, alabaster chandelier with ceiling medallion, recessed lighting, lighted built-in unit with display shelving and storage cabinets; double door entry to Sun Room and access to Kitchen
- Sun Room featuring triple pane windows with encased mini-blinds on three sides, angled ceiling with recessed lighting, hardwood floors, wall mounted Fujitsu supplemental air conditioning unit
- Kitchen with hardwood floors, recessed lighting, custom cherry cabinetry with glass fronted accent panels, large pantry cabinet with pullout drawers, granite counter tops, honed marble backsplash with decorative inset above range, under-cabinet lighting, top-of-the-line stainless steel appliances including dual fuel KitchenAid 6-burner gas range with 36" electric oven below, KitchenAid refrigerator/freezer, Sharp Insight Pro microwave drawer, KitchenAid dishwasher with integrated cabinetry panel, stainless steel Elkay sink, granite topped center island breakfast bar with pendant light above and storage cabinets below, dining area with built-in banquet seating, chandelier and large bay window with wood blinds and display ledge; access to Garage, backyard and Laundry Room/Mud Room
- Powder Room with lattice patterned marble floor, furniture style vanity with granite top and storage below, mirror and light fixture above, crown molding, window with wood blinds, recessed light
- Laundry Room/Mud Room with stone tile floor, Whirlpool Duet front load washer and dryer with storage cabinets above, utility sink, storage closet, built-in shelving, fluorescent lighting window with wood blinds

SECOND LEVEL

- Gallery Landing with hardwood floors, crown molding, picture moldings, sitting area, large linen closet with shelving
- Master Bedroom Suite featuring, hardwood floors, crown molding, recessed lighting ceiling fixture, full windowed wall with plantation shutters plus additional shuttered window, 2 closets with frosted glass double doors, walk-in closet with custom shelving, linen closet with shelving; pocket door to en suite bath with marble topped vanity with framed mirror above and storage below, glass tile backsplash, recessed lighting, ceiling fixture, glass enclosed walk-in shower tiled walls and floor, hand-held shower head and built-in bench
- Bedroom #2 with hardwood floors, crown molding, recessed lighting, 2 windows with wood blinds, walk-in closet with shelving
- Bedroom #3 with hardwood floors, 3 windows with wood blinds, crown molding, ceiling fan with light, walk-in closet with shelving
- Bedroom #4 with hardwood floors, 2 double door closets, crown molding, ceiling fan with light, 3 windows with wood blinds
- Full Hall Bathroom with tile floor, 2-sink marble topped vanity with large framed mirror above, storage below, decorative tile backsplash, window with plantation shutters, 2 shower heads over tub with tiled wall and decorative border tile

THIRD LEVEL

- Landing with hardwood floors, sitting area with angled ceiling, recessed lighting, 2 closets and wall mounted supplemental air conditioning unit
- Bedroom #5 with carpet, angled ceiling, 2 large windows with wood blinds, walk-in closet with shelving, supplemental air conditioning unit, 3 under-eave storage closets
- Bedroom #6 with carpet, angled ceiling, 2 large windows with wood blinds, walk-in closet, 3 under-eave storage closets, recessed lighting, supplemental air conditioning unit
- Full Hall Bathroom with marble tile floor, quartzite topped 2-sink vanity, framed mirror and light fixture above, glass enclosed shower with marble tile walls and floor, built-in product nooks, 2 shower heads, 2 windows with wood blinds, recessed lighting, supplemental baseboard heater

LOWER LEVEL

- Recreation Room/Billiards Room with carpet, built-in media wall unit with gas fireplace, shelving, TV and speakers, large windows with backyard views, built-in ceiling speakers, built-in eating counter furniture; door to patio and pool, access to full bath
- Full Bathroom with marble tile floor, glass tile backsplash, vanity with large framed mirror above, glass door tile shower with 2 shower heads, linen closet with shelving
- Office/Exercise Room with built-in desk and storage drawers
- Flexible open area with access to utilities

EXTERIOR

- Extremely private 2-tiered backyard featuring brick paver patio surrounding heated free gunite form pool and hot tub, extensive professional landscaping including lush lawn, mature specimen trees and shrubbery and colorful flower beds, 8-zone underground sprinkler system

ADDITIONAL FEATURES / UPGRADES

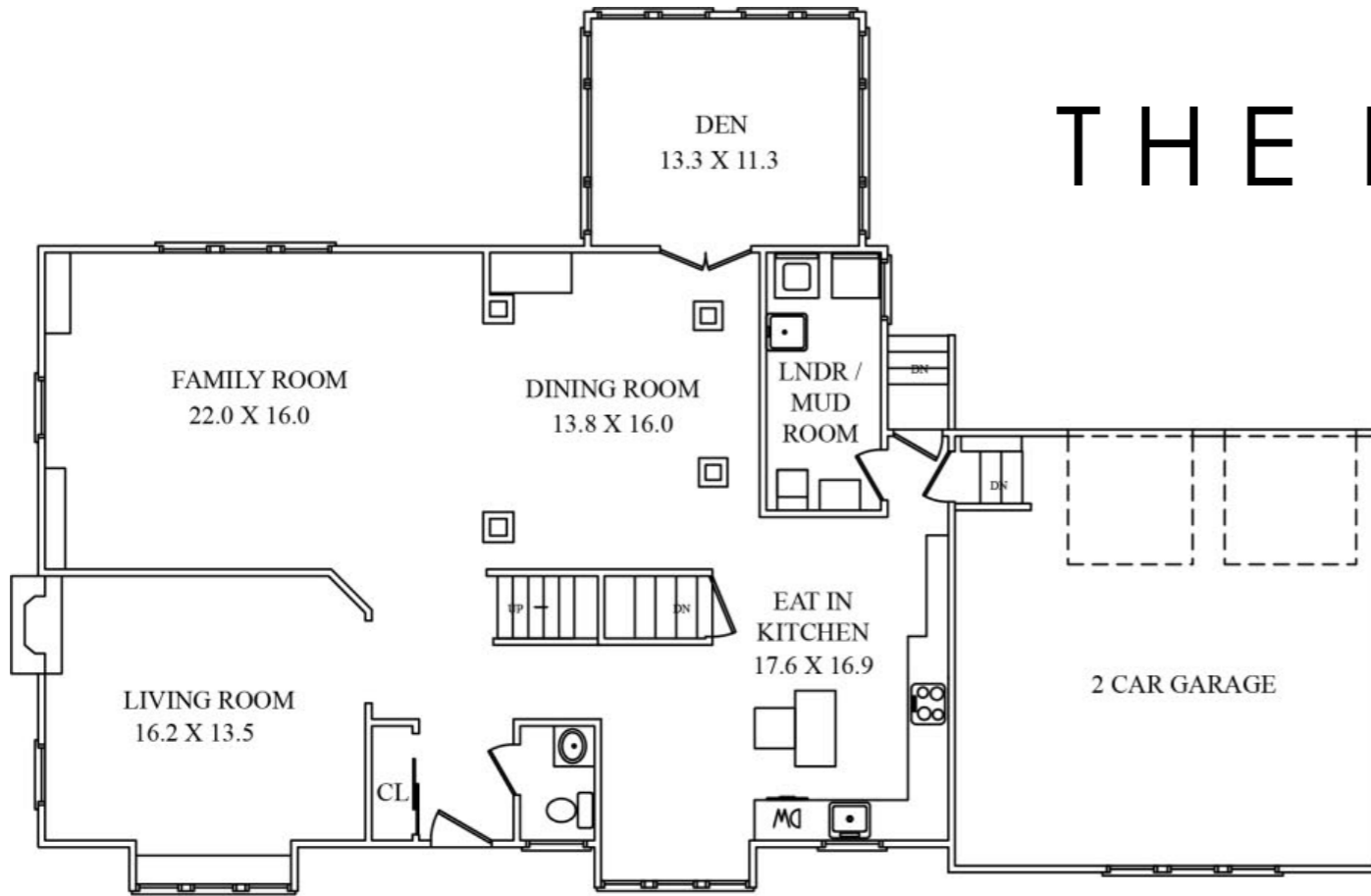
- 2-car garage with electric doors
- Whole house ADT security system
- 3 sump pumps in lower level (one with battery back-up)
- 20K Generac whole house generator installed (2013)
- New 75-gallon hot water heater installed (2018)
- All bathrooms fully renovated (2011-15)
- Sun Room renovation completed (2013)
- Full Kitchen Renovation (2010)
- First level hardwood floors refinished (2018)
- Driveway repaved (2018)



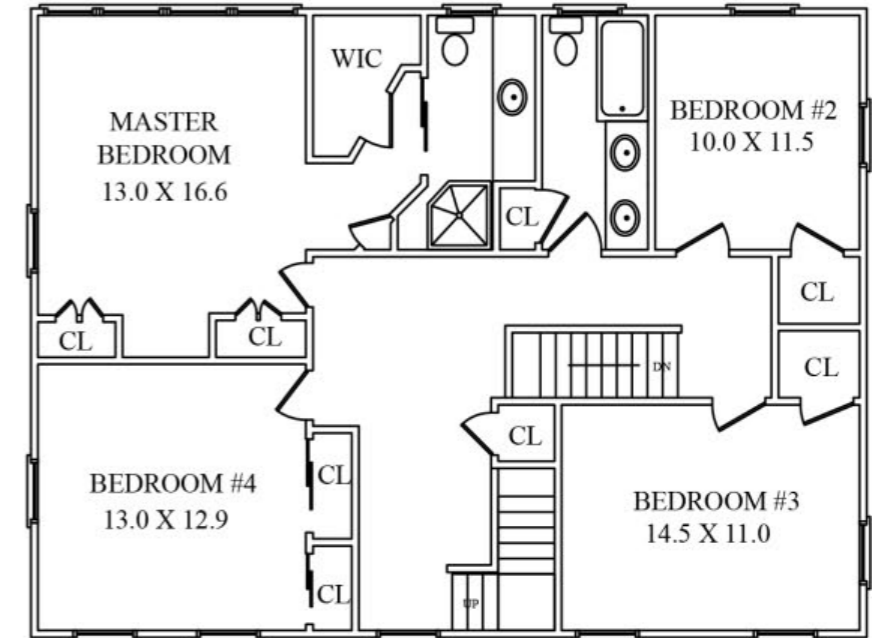


Upon viewing, you will undoubtedly see how much the handsome home at 88 May Drive has to offer. Its generous interior spaces combined with its spectacular outdoor oasis and sought after location with easy access to top ranked schools, fine shopping and NYC transportation make it the perfect place to call home!

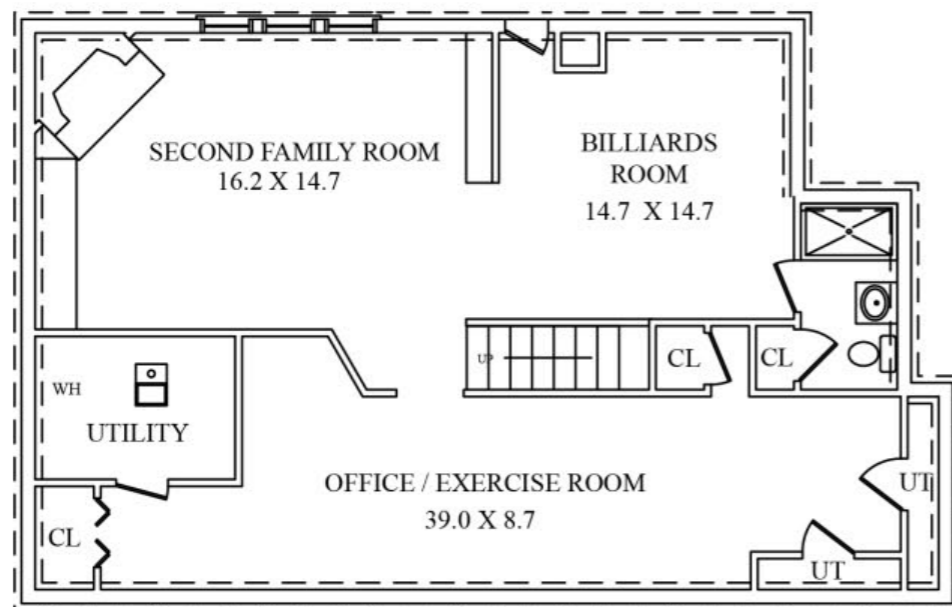
THE FLOORPLAN



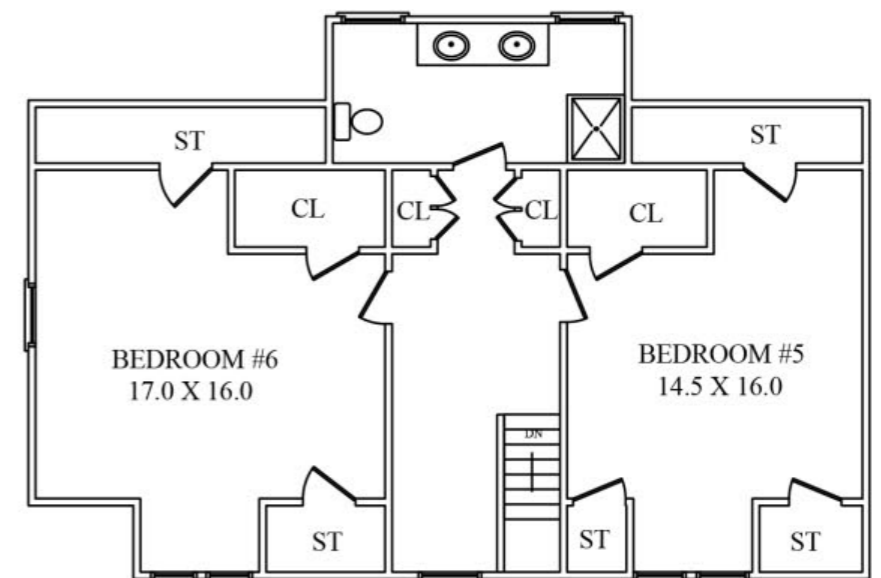
FIRST LEVEL



SECOND LEVEL



LOWER LEVEL



THIRD LEVEL



sueadler 
THE #1 KELLER WILLIAMS TEAM IN NEW JERSEY **team**

CELL: 973.936.9129
OFFICE: 973.376.0033 x101

EMAIL: info@sueadler.com
sueadler.com/88may

kw PREMIER
PROPERTIES
KELLERWILLIAMS.