

10 EUCLID AVENUE | APT 502 | SUMMIT, NJ



**sueadler**   
THE #1 KELLER WILLIAMS TEAM IN NEW JERSEY **team**

**kw** PREMIER  
PROPERTIES  
KELLERWILLIAMS.

Each Keller Williams office is individually owned and operated.



Welcome to 10 Euclid Avenue, Unit #502! This move-in ready 3 Bedroom, 2 Bath Co-op is in the heart of Summit and conveniently located only steps from restaurants, shopping and the Summit train station.

Step through the front doorway into the Entry Foyer complete with gorgeous architectural details such as deep crown molding, and an abundant coat closet. The spacious and airy Living Room is perfect for a lazy afternoon with a book or entertaining friends and family. Family gatherings and holiday celebrations are a dream in the Dining Room, with its open layout to the Gourmet Chef's Kitchen and Living Room.



The fully renovated Gourmet Chef's Kitchen features custom cabinetry, granite countertops and a chic glass tile backsplash, making the Kitchen extraordinary in function and style. An Office, accessible from the Kitchen, provides privacy and convenience making working from home a dream.



Ready to retire for the evening? Proceed through the arched entry where you will find a Hallway with dual walk-in closets and an additional double door linen closet to insure that nothing is out of place. The Master Suite radiates style with plenty of natural light and an abundant Walk-In closet. An additional Walk-In Closet/Dressing Area featuring custom cabinetry with granite countertops, and an abundance of hanging and shelving, is spectacular. You won't want to leave the fully renovated spa-like Master Bathroom complete with stone floors, stone wainscoting and walk-in shower. Down the hall, you will find sunlit and roomy Bedrooms 2 and 3 with abundant closet space, as well as a deluxe renovated Full Hallway Bath.

This incredible home has covered parking, on-site maintenance and is walking distance to Summit train station, top-notch schools, parks, fabulous shopping and restaurants. 10 Euclid Avenue, #502 is a must see and will not last!



# INSIDE & OUT

## MAIN LEVEL

- Entry Foyer/Hallway featuring baseboard molding, deep crown molding with decorative detail, flush mount light fixture, walk-in closet featuring floor to ceiling shelving
- Living Room featuring baseboard molding, deep crown molding with decorative detail, track lighting, picture window flanked by casement windows, open layout to Kitchen and Dining Room
- Dining Room featuring baseboard molding, deep crown molding with decorative detail, pendant light fixture, open layout to Kitchen and Living Room, picture window flanked by casement windows
- Gourmet Chef's Kitchen featuring baseboard molding, recessed lighting, pendant light fixture, custom cabinetry (some with glass doors) with quartz countertops, glass tile backsplash, Electrolux cook top, Kitchen Aid Refrigerator/Freezer, sink with Commercial style faucet, Electrolux oven, Kitchen Aid dishwasher, picture window flanked by casement windows, access to Office
- Office featuring carpet, baseboard molding, pendant light fixture, casement windows
- Hallway leading to Bedroom Area featuring arched entry with decorative pillar detail, baseboard molding, recessed lighting with eyeball trim, flush mount light fixture, dual walk-in closets with hanging and shelving, double door linen closet featuring floor to ceiling shelving, full length door mirror
- Ensuite Master Bedroom featuring baseboard molding, crown molding, recessed lighting, ceiling fan, decorative picture window flanked by casement windows, additional casement window, walk-in closet with built-in hanging and shelving
- Separate Walk-In Closet/Dressing Area featuring baseboard molding, crown molding, recessed lighting, casement windows, custom built-in cabinetry with granite countertops, drawers, hanging and shelving
- Master Bathroom featuring stone tile floors, stone wainscoting, recessed lighting, custom vanity with granite countertop and storage, mirrored wall, sconce, walk-in shower with penny tile flooring and stone surround, hand held rain showerhead
- Bedroom 2 featuring baseboard molding, recessed lighting, ceiling fan, casement windows with blinds, walk-in closet with hanging and shelving
- Bedroom 3 featuring baseboard molding, 3 side by side casement windows with blinds, double door walk-in closet with hanging and shelving
- Full Hallway Bathroom featuring tile flooring, baseboard molding, flush mount light fixture, pedestal sink, mirror, sconce, shower/tub with frameless glass doors, hand held rain shower head

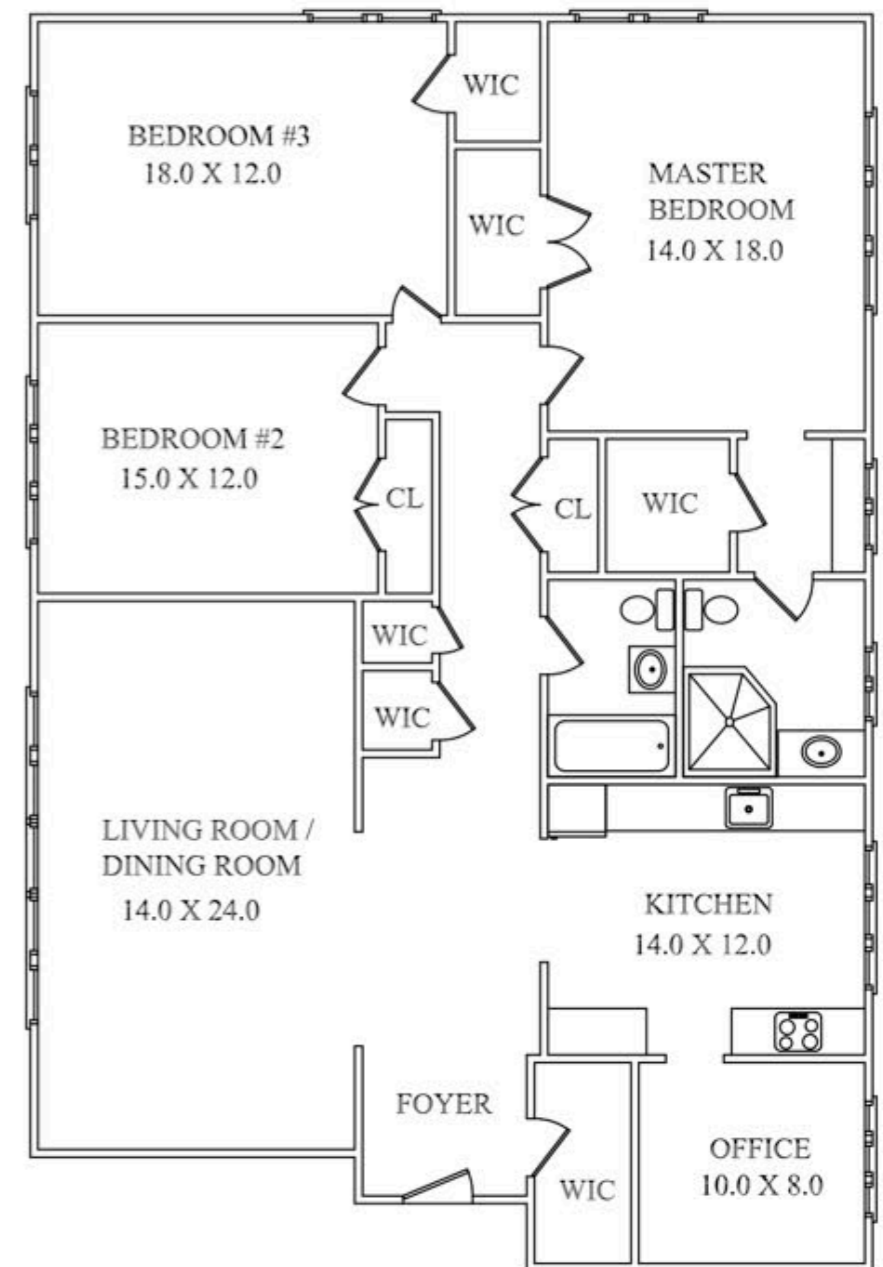
## ADDITIONAL FEATURES & UPGRADES

- Laundry Center in building
- Kitchen fully renovated in 2011
- Bathrooms renovated in 2011
- Buzz in system for entry
- On site superintendant/management company
- Monthly maintenance fee of \$2106 includes all tax, utilities and grounds maintenance
- Garage parking



CELL: 973.936.9129  
OFFICE: 973.376.0033 x101  
EMAIL: [info@sueadler.com](mailto:info@sueadler.com)  
[sueadler.com/10euclid](http://sueadler.com/10euclid)

## THE FLOORPLAN



All information deemed reliable but not guaranteed