

Turn-Key Glenwood Home

54 Elmwood Place, Short Hills

Specifications

MLS # 2942592
 Year Built: 1987
 Lot Size: 50 x 110
 Bedrooms: 3
 Bathrooms: 2

Features: Recently renovated, professional grade appliances, remodeled bathrooms, new Anderson windows, hardwoods throughout.



This fully renovated bi-level offers a fabulous opportunity to enjoy all Short Hills has to offer in style and luxury. Inside, the open and free flowing floor plan allows for comfortable living and great entertaining with ultimate ease. Freshly painted walls and decorative molding accents define these spaces, while polished hardwood floors continue from one inviting area to the next. What more could you ask for from this totally updated Glenwood Section home.

The First Level

- An entry foyer with palladium window, hardwood floors and stairs to the ground and first levels.
- Living room with hardwood floors, large picture window, recessed lighting and crown molding
- Dining room with wood floors, and crown molding
- The updated eat-in kitchen has been renovated with mosaic tile backsplash, granite counters, wood floors, professional stainless steel appliances and crown molding. Recessed lighting and large skylight effectively illuminate the work areas.

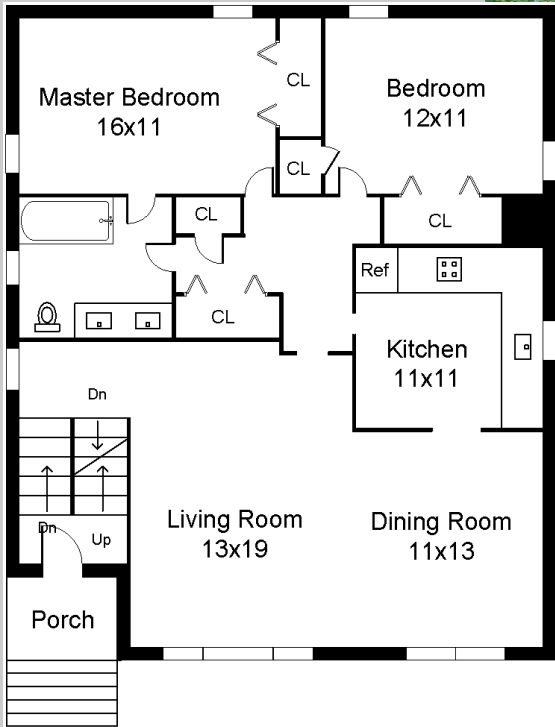
The Ground Level

- Spacious recreation room with engineered wood floors, gas fireplace with brick surround and glass sliders out to rear yard.
- Bedroom with engineered wood floors and large walk-in closet.
- Full bath with tile floor, and shower over tub.
- Laundry room with tile floor.
- Access to over-sized 2-car garage

sueadler 
 THE #1 KELLER WILLIAMS TEAM IN NEW JERSEY team

Cell: (973) 975-0197 Office: (973) 376-0033 x101
 Email: Sue@SueAdler.com ww.SueAdler.com/54Elmwood

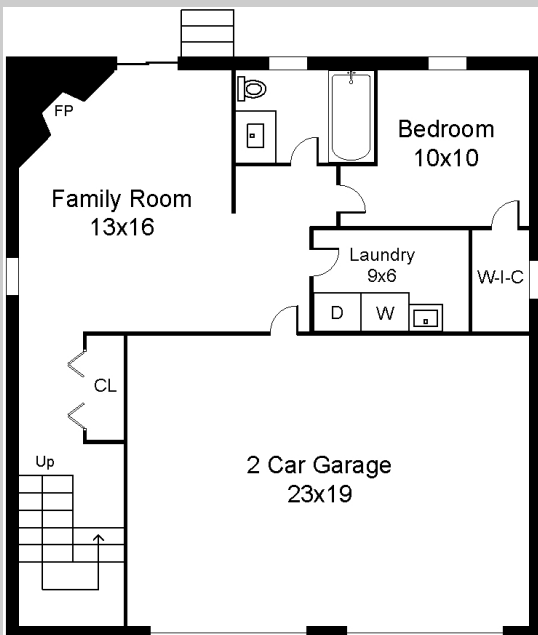
FIRST FLOOR



ADDITIONAL FEATURES AND UPDATES

- Whole house hardwood floors
- New ground level bathroom
- Remodeled kitchen with stainless steel professional grade appliances.
- Crown molding throughout home
- Newer Furnace
- Anderson double hung windows
- Newer Roof

SECOND FLOOR



The inspiration of Stephen Hartshorn in the late 1800s, Short Hills is a collection of quiet tree lined streets designed to complement the landscape. Distinctive homes, some of historic value, populate these streets. The result is a planned community that honors its environment while enjoying easy access to major highways, business centers and NYC commuter trains.

54 Elmwood is a perfect example of what Hartshorn had in mind. This freshly updated home features top of the line finishes throughout including a Viking range, Anderson Windows and solid wood cabinetry. This stunning home is located in one of the most desirable sections of town.

When you combine this caliber of home with such an extraordinary location you can not go wrong. 54 Elmwood is located just blocks from the Train station, Schools and down town shopping.

Sue Adler
KELLER WILLIAMS
PREMIER PROPERTIES



sueadler 
THE #1 KELLER WILLIAMS TEAM IN NEW JERSEY team

Cell: (973) 975-0197 Office: (973) 376-0033 x101
Email: Sue@SueAdler.com ww.SueAdler.com/54Elmwood