



*Sue Adler*  
**KELLER WILLIAMS**  
**PREMIER PROPERTIES**



Cell: (973) 975-0197  
Office: (973) 376-0033 x 101  
VIP@SueAdler.com  
[www.SueAdler.com/178GreatHills](http://www.SueAdler.com/178GreatHills)

**178 Great Hills Drive**

**SOUTH ORANGE | NEW JERSEY**

**sueadler**   
**THE #1 KELLER WILLIAMS TEAM IN NEW JERSEY team**

Each Keller Williams office is independently owned and operated.



Located in the desirable Newstead section, this classic Colonial is loaded with curb appeal. Inside, spacious rooms are arranged in an open flow, where the neutral decor welcomes a wide array of tastes and furnishings. Picture windows bathe rooms in natural light, while gleaming hardwood floors add texture and warmth. This is a home that you will be proud to showcase at every opportunity.

## THE FIRST LEVEL

- ◆ An entry foyer greets you and includes a ceramic tile floor and convenient guest closet.
- ◆ The center hall foyer features a ceramic tile floor, elegant turned staircase with wrought iron railing.
- ◆ The front-to-back living room features hardwood floors, crown molding and recessed lights. The wood-burning fireplace includes a marble surround, while front and back picture windows usher the sunlight into nearly every corner.
- ◆ Adjoining the living room is the formal dining room. Hardwood floors, chair rail and crown molding are featured. French doors open to a flagstone patio and backyard beyond.
- ◆ The chef's kitchen has hardwood floors, custom cabinets, granite counters and a slate tiled backsplash. Stainless steel appliances includes, dishwasher, gas cook top and double wall ovens. The walk-in pantry closet stores whatever you need to feed a hungry crowd. Completing the kitchen is the center island breakfast bar seating six.
- ◆ The family room is open to the kitchen and features a front bay window, custom built-ins, hardwood floors and recessed lights.
- ◆ Located off the living room is a four-season sun room with laminate wood floors and windows on three walls.
- ◆ The powder room has a tile floor and pedestal sink.
- ◆ The mud room connects the kitchen to the adjoining 2-car garage.
- ◆ Located off the kitchen is a back staircase to the second level and door to the backyard.



## THE SECOND LEVEL

- ◆ Warm and inviting the master bedroom features wall-to-wall carpet, recessed lights and spacious walk-in closet.
- ◆ The master study/office has custom built-in bookcases, wall-to-wall carpet and recessed lights
- ◆ The luxurious master bath has tile floor, vanity with double sink, walk-in tile shower, and mirrored dressing room
- ◆ Bedroom 2 has a wall-to-wall carpet, crown molding, double-width closet and ceiling fan
- ◆ Bedroom 3 includes a wall-to-wall carpet, ceiling fan, crown molding, a walk-in closet with built-ins and access to the service stairs
- ◆ The guest suite features wall-to-wall carpet, two closets, an en suite full bath with tile floor, vanity with sink and tile shower/tub, access to storage area and service stairs to the first level
- ◆ The hall bath aptly serves the bedrooms with a tile floor, tile shower/tub and pedestal sink
- ◆ The main hallway has a double wide linen closet, laundry chute and access to attic storage

## THE LOWER LEVEL

- ◆ The recreation room has wall-to-wall carpet, storage under the stairs and built-ins for storage.
- ◆ The second powder room has a tile floor and vanity with sink
- ◆ Laundry room features dual laundry sinks and outside access
- ◆ Utility / Storage rooms

## ADDITIONAL FEATURES

- ◆ Renovated kitchen and baths
- ◆ Newer windows
- ◆ Newer French doors in the dining room and back door in the service hallway
- ◆ Converted the porch to a four-seasons sun room with laminate wood floors and newer windows
- ◆ Newer first floor powder room
- ◆ Newer hardwood floors in kitchen, formal living room and main staircase
- ◆ Newer hall carpets and main staircase runner
- ◆ Completely renovated lower level with newer wall-to-wall carpet, French drains and sump pumps
- ◆ Upgraded electric
- ◆ Newer air conditioning unit
- ◆ Newer hot water heater

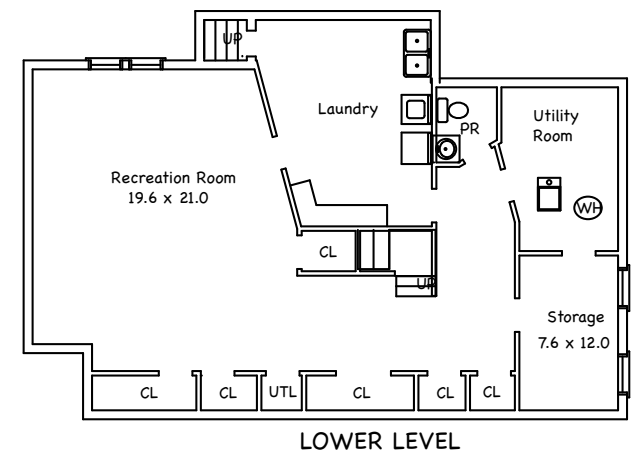
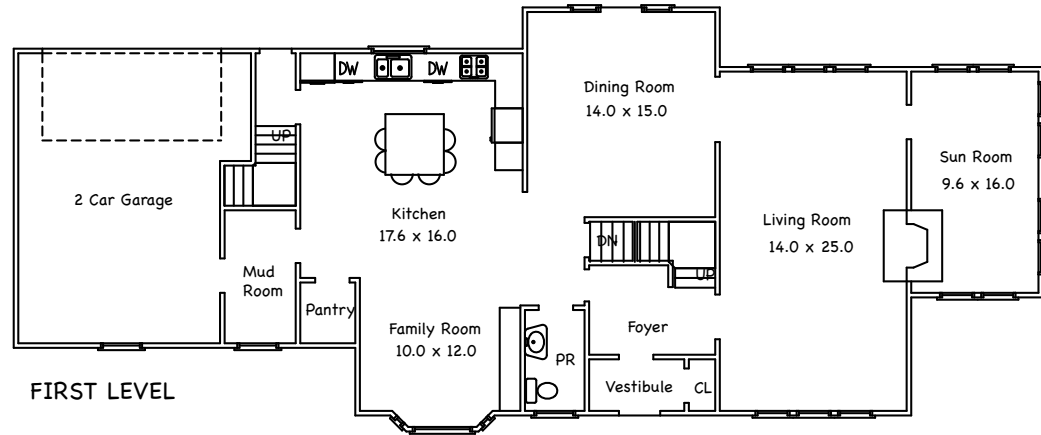
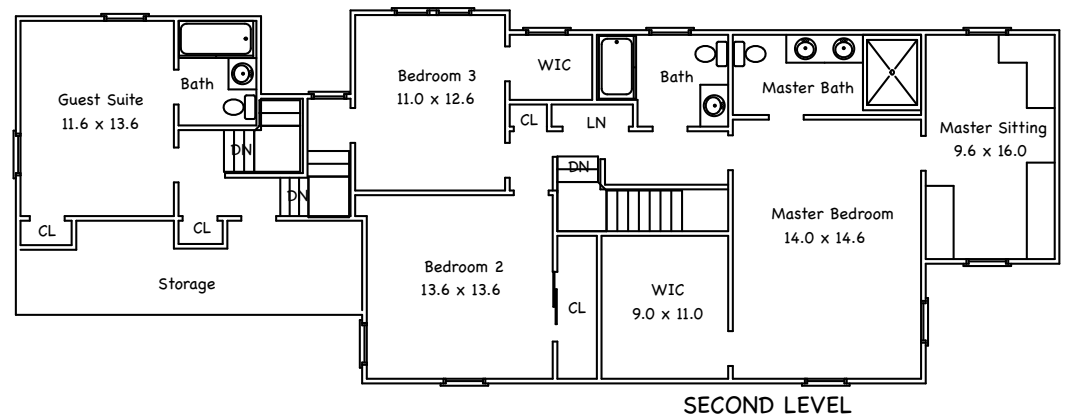
## EXTERIOR FEATURES

- ◆ Flagstone front walkway leading to front steps with wrought-iron railings
- ◆ Partial brick exterior
- ◆ Paved turn-around driveway with extra parking
- ◆ Attached rear-entry two-car garage
- ◆ Newer flagstone rear patio
- ◆ Shed and level backyard
- ◆ Landscaped property with mature trees and manicured shrubbery

## PROPERTY PARTICULARS

- ◆ Built: 1949
- ◆ Lot Size: 100 x 150

South Orange Village is a community with a rich history and thriving downtown. Gas lamps line charming neighborhood streets populated with a variety of homes. The Newstead section sits at the base of South Mountain Reservation, offering residents a tranquil setting. From this prestigious neighborhood, there is ready access to major highways and business centers, while a nearby Jitney stop provides service to Village shopping and NYC commuter trains. The South Orange Performing Arts Center is nearby, along with hiking trails and recreation. This spacious home offers a unique opportunity to take advantage of all South Orange Village has to offer in complete comfort and style.



**Disclaimer:** Information contained in this brochure is deemed reliable but not guaranteed and should be independently verified by the buyer(s). Keller Williams Realtors and agents acting on their behalf for the purpose of creating this brochure are not responsible for typographical errors, misprints or misrepresentations and are therefore held totally harmless. This listing is subject to price changes and/or withdrawal without prior notice.