



Sue Adler
KELLER WILLIAMS
PREMIER PROPERTIES

Cell: (973) 975-0197
Office: (973) 376-0033 x101
Sue@sueadler.com
www.sueadler.com/100westview

100 Westview Road

sueadler 
THE #1 KELLER WILLIAMS TEAM IN NEW JERSEY team



Located in the Deerfield section of Short Hills and tucked away in a beautiful private wooded setting, with views of greenery from every window, this mid-century modern ranch features one floor living with spacious rooms, arranged in an open flow, where neutral decor welcomes a wide array of tastes and furnishings. Large windows and skylights bathe rooms in natural light, and the inviting floor plan welcomes entertaining both inside and out. This is a home that you will be proud to showcase at every opportunity.

As you enter into the foyer you are immediately drawn to the sunken living room with double sided fireplace with stone surround and four large sliding doors out to a wrap-around deck. The adjacent dining room features a built-in credenza or serving table with additional shelving and a sliding glass door out to the bluestone patio with pergola. Flowing right in from the dining room, the updated eat-in kitchen is at the heart of this home with granite counters, mosaic tile backsplash, pantry and large picture windows. The family room is a perfect place to kick back and relax with wood fireplace, custom built-ins and wood ceiling.





When it's time to relax everyone will find their own personal retreat in one of three bedrooms. The left wing of the house features two large bedrooms (one with office or walk-in closet) with double closets and shares a full bathroom with stall shower and vanity with double sinks. The Master bedroom with vaulted ceiling, skylight and custom built-in armoires give the space clean lines and the Master bathroom with stall shower, tub and skylight allows you to easily unwind after a long day.

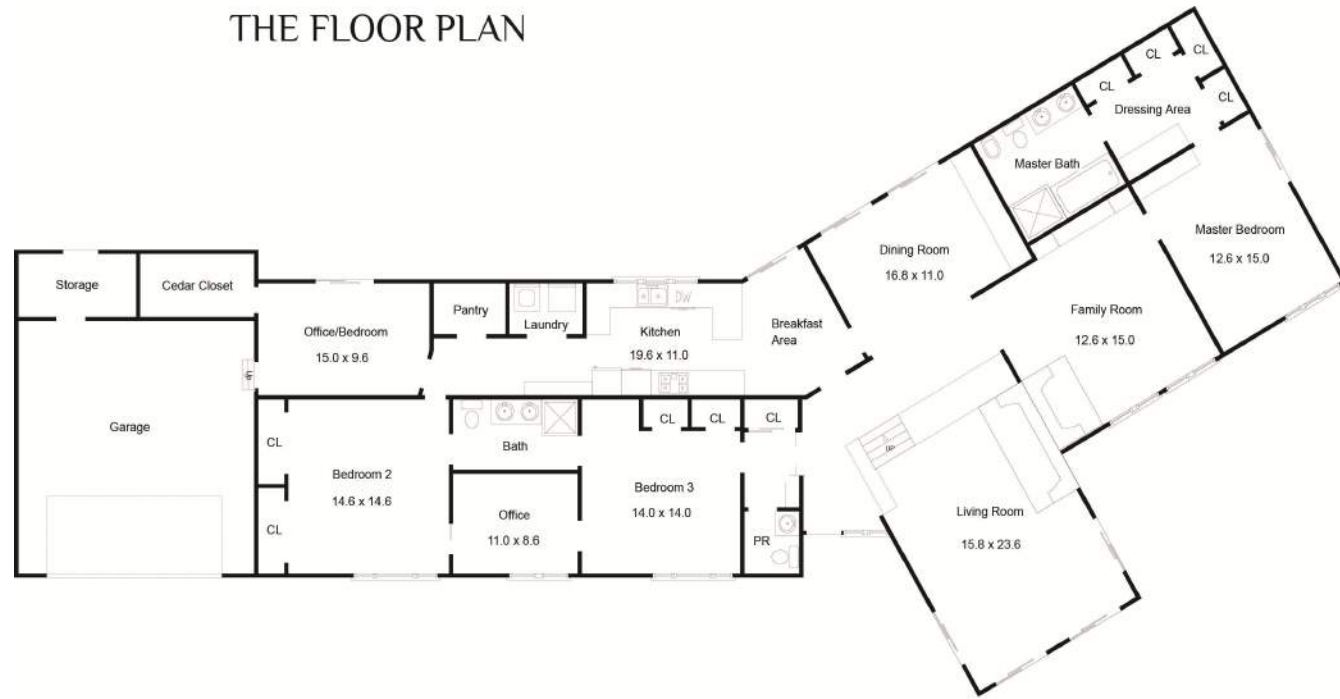
The laundry room is conveniently located next to the kitchen and just steps away is an office or 4th bedroom with walk-in cedar closet and sliding glass doors out the patio.

Enjoy all Short Hills has to offer in complete comfort and style-in a community with a blue ribbon school district, access to NYC, superb restaurants and first class shopping.

Inside and Out...

- Entry foyer with tile floor
- Living room with tile floor, wood fireplace with stone surround and 4 sliding doors out to deck
- Dining room with tile floor, built-in credenza/serving table, sliding door to bluestone patio
- Family room with tile floor, wood fireplace, custom built-ins and wood ceiling
- Eat-in kitchen with tile floor, granite counters, mosaic tile backsplash, picture windows and pantry
- Powder room with tile floor and pedestal sink
- Bedroom with carpet, skylight and two closets
- Bedroom with carpet, two closets and office or walk-in closet
- Bathroom with tile floor, vanity with double sinks and stall shower
- Master bedroom with carpet, vaulted ceiling, built-in clothing armoires, skylight and sliding door out to side patio
- Master bathroom with tile floor, vanity with two sinks, tub and stall shower, skylight and linen closet
- Laundry area
- Office or 4th bedroom with carpet, walk-in cedar closet and sliding doors out to rear patio
- Rear patio features bluestone patio and pergola

THE FLOOR PLAN



NOT TO SCALE - This floor plan is provided for illustration purposes only.
Room positions and dimensions are approximate and should be independently measured for accuracy.

Additional Features and Updates

- Bluestone Patio with Pergola
- New Roof (2012)
- Kitchen (2010)
- 2-car attached garage with storage room

