

100 Grover Lane West

West Caldwell, New Jersey



Cell: (973) 975-0197
Office: (973) 376-0033 x101
Sue@sueadler.com
www.sueadler.com/100groverlanewest

Sue Adler
KELLER WILLIAMS
PREMIER PROPERTIES



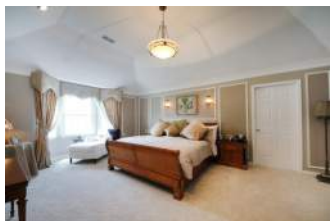
Each Keller Williams office is independently owned and operated.



Charm and elegance are the hallmarks of this fabulous Colonial, located on a very private setting of two cul-de-sac streets and within blocks to schools, parks and Hilltop Reservation. From the moment you pull up to this special home you will be awed by the attention to detail and the high end finishes both inside and out.

The spacious double-story entry foyer with tile floor and high ceilings is both warm and welcoming. The formal Living room features chair rail and wood trim detailing and beautiful wood floors. The formal dining room is the perfect place for a large or intimate gathering with the soft colored walls coupled with chair rail and wood trim detailing and dental molding.





The spacious kitchen features granite counter-tops, double ovens, stainless steel appliances and pantry; opening to a breakfast area with magnificent 300 gallon fish tank and sliding Pella French doors out to deck overlooking the sprawling private backyard-ready for all your outdoor hobbies! The adjoining family room is a great place to kick back and relax with carpeting, dental molding and gas fireplace with slate hearth and wood mantle. The first level powder room features soft textured wallpaper, marble tile floors, marble vanity and marble tile shower stall, and the adjacent bedroom welcomes overnight guests or makes a perfect in-law suite.

The Second level is home to four bedrooms and two full bathrooms. Featuring a tray ceiling, large sitting room, spacious walk in closet and luxurious master bath, the Master Suite is an oasis anyone would love to come home to each day. At the other end of this level are three generous-sized bedrooms and hall bathroom, aptly servicing family and guests through the morning rush.

And there's more.... the finished lower level includes recreation area, full bathroom and bonus room or potential 6th bedroom. This house has so many options to grow with your changing family, coupled with its great location makes 100 Grover Lane West a perfect place to call home.

Inside and Out...

First Level

- Double story entry foyer with tile floor and two coat closets
- Dining Room with hardwood floors, bay window, crown molding, chair rail and wood detailing
- Living Room with hardwood floors, chair rail and wood detailing, crown molding and recessed lighting
- Kitchen with tile floor, granite countertops with center island and breakfast bar and Grunning-type bar stools, pantry, stainless steel high end appliances, double ovens and warming oven, 300 gallon fish tank and Pella French sliding doors to deck
- Family Room with carpet, gas fireplace with slate hearth and wood mantle, crown molding and recessed lighting
- Bedroom with carpet, closet and recessed lighting
- Bathroom with marble vanity countertop, marble tile floor and marble stall shower
- Laundry room with tile floor

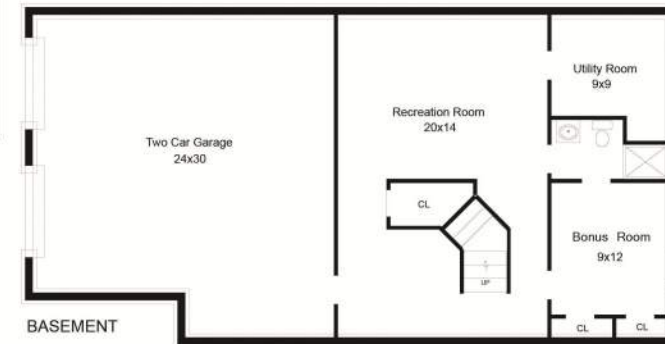
Second Level

- Master Bedroom with sitting room, walk-in closet with custom shelving, tray ceiling, wood detailing, crown molding and recessed lighting
- Master Bathroom with marble tile floor, jetted soaking tub, stall shower, vanity with two sinks and linen closet
- Bedroom with carpet, closet and recessed lighting
- Bedroom with carpet, closet and recessed lighting
- Bathroom with tile floor, marble vanity countertop with double sinks, tub shower and skylight
- Bedroom with carpet, closet and recessed lighting

Lower Level

- Recreation room with carpet
- Bedroom with carpet and en-suite bathroom
- Bathroom with marble tile floor and marble tile stall shower
- 2 car garage

The Floor Plan



NOT TO SCALE - This floor plan is provided for illustration purposes only. Room positions and dimensions are approximate and should be independently measured for accuracy.

Additional Features and Updates

- House interior painted
- Cedar deck refinished
- Front lawn sodded
- Gas line for BBQ
- Built-in 300 gallon fish tank (fresh or salt water equipment in place)
- Pella French door (rear door to deck)
- New carpeting in Master bedroom and lower level
- Crown molding and wall trim detailing throughout
- New gas fireplace insert
- Dining room floors refinished

