

8 Clearview Road

Springfield, New Jersey



Sue Adler
KELLER WILLIAMS
PREMIER PROPERTIES

sueadler 
THE #1 KELLER WILLIAMS TEAM IN NEW JERSEY team

Each Keller Williams office is independently owned and operated.



Situated on a cul-de-sac atop .55 private acres, this immaculate move-in ready Colonial has been renovated to perfection both inside and out.

As you enter the home through the inviting double story entry foyer your first glimpse of the homes' open and airy floor plan comes into view. Well planned living and entertaining spaces set this home apart, beginning with the eat-in kitchen. Open to the den and dining room, the kitchen is capable of handling those quick on the go meals or your next Thanksgiving dinner. With center island, pantry, and separate dining area, cooking in this kitchen is both gratifying and delightful. Extending from the kitchen, the den and family rooms offers a central gathering place to kick back and relax. The formal dining room, adjacent to the kitchen features a large picture window and is ready to host your next dinner party in complete comfort and style. Completing the first level is a powder room.





The second level is home to 4 generous-sized bedrooms and 2 full bathrooms. The Master Suite offers a romantic setting with two custom closets, one-walk-in. The spa-like master bathroom with tumbled stone tile floor, walk-in steam shower with river stone floor, vanity with double sinks and dressing/make-up area is any couple's dream. Three additional bedrooms and hall bathroom provide private and comfortable accommodations for guests and family alike.

The finished lower level has access to the attached two car garage and features a recreation room and full bathroom with stall shower.

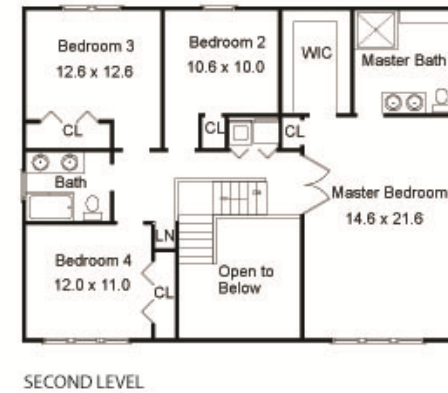
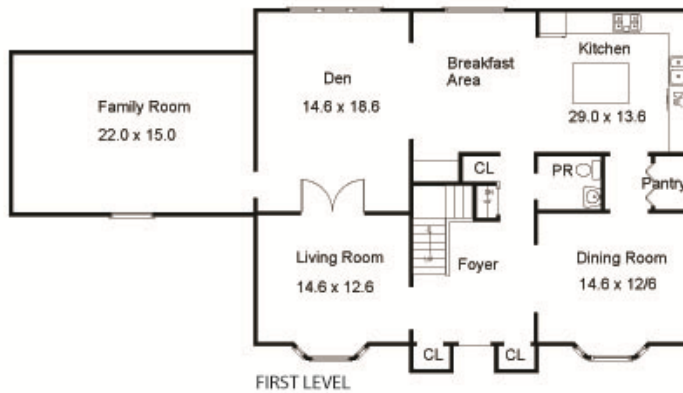
This house has so many options to grow with your changing family, coupled with its great location makes 8 Clearview Road a perfect place to call home.

Inside and Out...

THE FLOOR PLAN

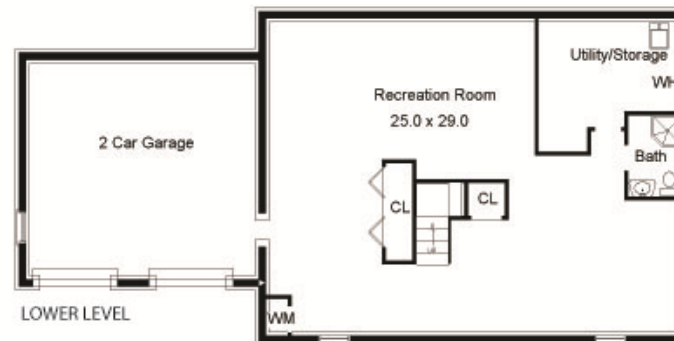
First Level

- Double story entry foyer with two coat closets
- Dining room with hardwood floors, tray ceiling and picture window
- Kitchen with hardwood floors, work area, breakfast area, pantry, recessed lighting and sliders out to patio
- Den with carpet (open to kitchen)
- Living room with carpet, picture window, ceiling fan, recessed lighting and French doors to den
- Family room with carpet, vaulted ceiling and recessed lighting
- Powder room with tile floor and pedestal sink
- Closet



Second Level

- Master bedroom with hardwood floors, vaulted ceilings, two closets with custom shelving (one walk-in) and recessed lighting
- Master bathroom with tumbled stone tile floor, walk-in steam shower with river stone floor, vanity with double sinks and dressing/make-up area
- Bedroom with carpet, closet and recessed lighting
- Bedroom with carpet, closet and recessed lighting
- Bedroom with carpet, ceiling fan, closet and recessed lighting
- Bathroom with tile floor, vanity with double sinks and shower over tub



NOT TO SCALE - This floor plan is provided for illustration purposes only. Room positions and dimensions are approximate and should be independently measured for accuracy.

Lower Level

- Recreation room with carpet and two closets
- Bathroom with tile floor, pedestal sink and stall shower
- Access to 2-car garage

Additional Features

- New A/C units (2011 and 2012)
- New master bathroom (2011)
- New stucco on basement level (2011)
- New driveway (2010)



Cell: (973) 464-9129
Office: (973) 376-0033 x101
Sue@sueadler.com
www.sueadler.com/8clearview

Sue Adler
KELLER WILLIAMS
PREMIER PROPERTIES