

20 Hardwell Road

Short Hills, New Jersey



Sue Adler
KELLER WILLIAMS
PREMIER PROPERTIES

sueadler 
THE #1 KELLER WILLIAMS TEAM IN NEW JERSEY team

Each Keller Williams office is independently owned and operated.







Pure perfection is evident at every turn in this classic all brick Georgian Colonial long admired as one of the most elegant estates in Old Short Hills. Nestled on quiet cul-de-sac with 1.7+ acres of park-like grounds abutting South Mountain Reservation, 20 Hardwell Road's traditional architecture has been further enhanced by recent renovations adding numerous updates that blend seamlessly with charming original details. Wide plank pegged wood floors, six wood burning fireplaces, intricate crown moldings and expertly crafted custom millwork all set the tone for the warmth and intimacy exuded throughout the home.

Upon arrival via the circular drive, you'll step into the welcoming Entry Foyer and your first glimpse of the finely appointed details that are evident throughout the home. The home's great flow for entertaining becomes evident as you step through a broad archway into the light filled Living Room featuring a grand wood burning fireplace with intricately detailed mantel and marble surround that will surely take center stage as friends and family gather for informal get-togethers and grand holiday celebrations alike. Large windows and French doors reveal one of several bluestone terraces with views of the spectacular landscape just outside. Continue through an archway to the right into a handsome wood paneled Library that is as impressive as it is inviting. Rich mahogany paneled walls, custom built-ins and a marble wrapped fireplace assure a warm environment for TV watching, reading or intimate conversation enjoyed with pre-dinner drinks prepared in the stylish Wet Bar tucked just around the corner. When it's time to dine, a banquet-sized Dining Room accessed via the Living Room boasts French door access to another terrace - and will surely provide an impressive setting for serving guests with meals prepared in the Kitchen that's just steps away. A conveniently located Butler's Pantry is sure to streamline the entertaining process.

At the core of the home are the spectacular chef's dream Kitchen and Breakfast Room. A show-stopping 2007 renovation includes neutral toned custom cabinetry, honed marble counter tops, top of the line appliances and an oversized center island with breakfast bar. The most discerning of chefs will surely revel in this top-notch facility - and will truly enjoy preparing all their favorite gourmet creations here. A nearby Family Room with wood-burning fireplace, a fully outfitted Home Office, a conveniently located Mud Room with built-in dog house, 2 Powder Rooms and a rear staircase complete the first level living space.





When it's time to retire at the end of the evening you'll proceed to the grand staircase leading up to the second level where a gallery hallway guides you to an abundance of spacious bedrooms. Luxury and serenity surround you in the Master Suite as the flickering flames from the fireplace welcome you. The suite is impeccably designed with a dressing area featuring a full wall built-in dresser, window seats overlooking the lush grounds, a walk-in closet with custom shelving and an en-suite, spa-like Master Bath with limestone tile floors, Corian topped double sink vanity, jetted tub and glass enclosed shower with multiple shower heads. Continue down the gallery hallway to find 5 additional bedrooms (each with plenty of closet space and an en suite bath) that assure privacy and comfort for family and guests. At the end of the hall you'll find a second handsomely outfitted home office with French door entry, built-in desk and custom cabinetry with plenty of storage space and file drawers. Take a walk up another staircase to the third level to find one more bedroom with en suite bath and easily accessible attic storage space.

And there's more...a finished lower level is home to a congenial Media Room warmed by the glow of a stone fireplace, a mirrored exercise room that makes it simple to fit in your morning workout, and a Bonus Room outfitted with storage and work spaces that make it ideal for use as a craft room, artist studio or study/work space... the choice is yours to use as you see fit! But that's not all...Step outside to enjoy the lush private setting where multiple bluestone terraces overlook an expansive space for enjoying your favorite outdoor hobbies, gardening, sports and even epic family cookouts!

Upon viewing, you'll undoubtedly see how much the distinguished home at 20 Hardwell Road has to offer. It's vast array of elegant luxury features, its flexible and spacious floor plan that's perfect for entertaining and its highly sought after location - just minutes from downtown shopping and restaurants, Blue Ribbon schools and NYC transportation - make it the ideal place to call your family home.





Inside and Out...

First Level

- Entry Foyer with wide plank pegged wood floors, mahogany door with sidelights and transom window above, crown moldings, 2 light fixtures, recessed lighting, 3 windows with window treatments; broad archway to Living Room, French doors to Library, access to center staircase and front hallway
- Living Room with wide plank pegged wood floors, crown moldings, recessed lighting, 2 large windows with bamboo shades, fireplace with wood mantel and marble surround, 2 sconces; French door access to backyard, French doors to Bar/Library, broad archway to Dining Room
- Bar featuring custom glass fronted cherry cabinetry with marble counter tops, under-cabinet lighting, recessed lighting, prep sink, Scotsman automatic ice machine, Sub Zero beverage refrigerator, large window with treatments; doorway to entry foyer hallway and broad archway to Library
- Library with French door entry, step down to wide plank pegged wood floors, mahogany paneled walls and custom built-in with cabinets and display shelving, fireplace with wood mantel and marble surround flanked by 2 sconces, recessed lighting, 4 windows plus large bay window with French doors to bluestone terrace; step up to wet bar
- Dining Room with wide plank pegged wood floors, crown molding, raised panel wainscoting, recessed lighting, pendant fixture, 2 large windows with bamboo shades plus bay window with French doors to terrace; swinging door to Butler's Pantry
- Butler's Pantry features custom cabinetry with storage drawer, glass fronted cabinets and display shelving, crown molding, recessed lighting; archway to front hallway to access Den, Powder Room and Kitchen
- Den with wide plank pegged wood floors, crown molding, recessed lighting, fireplace with wood mantel and brick surround flanked by built-in storage and display shelving, 4 windows with bamboo shades and window treatments, wall mounted speakers, mounted TV
- Powder Room with ceramic tile floor with decorative accents, custom wall paper, marble sink with chrome legs, mirror and 2 sconces above, crown molding, recessed lighting
- Kitchen with French door entry, wide plank pegged wood floors, grass cloth wallpaper, coffered ceiling with recessed lighting, custom cabinetry with honed marble counter tops and ceramic tile backsplash, top-of-the-line stainless steel appliances including Sub Zero refrigerator freezer with pullout drawers and glass front door, Marvel wine refrigerator, Wolf double wall oven with warming drawer, Wolf 6-burner gas cooktop with stainless hood, walk-in pantry closet with shelving, oversized center island with honed marble top, stainless steel sink, light fixture above, 6-seat breakfast bar, and wood topped baker's table, preparation alcove with sink, large bank of windows with window treatments, recessed lighting; open to Breakfast Room
- Breakfast Room featuring full windowed wall with French doors to bluestone patio, wood topped serving breakfront with dish storage and racks above, additional breakfront with glass fronted cabinets, storage drawers and wood serving surface, 2 sconces, window treatments, pendant light fixture; French doors to rear hallway, side door, Mud Room, Office and garage access
- Office with pocket door entry, carpet, custom cabinetry with built-in desk, crown molding, 2 windows with window treatments
- Mud Room with coat closet, 2 light fixtures, bead board ceiling and wainscoting, ceramic tile floor, built-in cubbies and hanging space, built-in dog house, broom closet; French door entry to Kitchen, access to garage, rear staircase and Powder Room #2
- Powder Room #2 with ceramic tile floor, vanity with marble top and storage below, mirror and light fixture above, crown molding, recessed lighting

Second Level

- Gallery landing with carpet, 4 windows with treatments, crown molding; leads to all bedrooms, office and third level
- Master Bedroom Suite featuring light-filled bedroom with 3 exposures, carpet, volume ceiling with decorative trim, recessed lighting and 2 chandeliers, picture frame moldings, 2 window seats, a dressing area with full wall built-in dresser unit, walk-in closet with shelving, built-in dressers with mirror above, 4 additional closets with auto-on lights, fireplace with wood mantel and marble surround and hearth flanked by 2 custom built-ins with storage cabinets and display shelving, 2 sconces, en suite spa-like bath with 2-sink vanity with Corian counter and tile backsplash, glass fronted storage cabinets and 2 framed mirrors above, recessed lighting, crown moldings, limestone tile floor, glass enclosed tiled shower with 2 rain shower heads and built-in corner bench, Jason spa tub set in limestone tile surround with tile backsplash and window above

Second Level continued

- Bedroom #2 with carpet, crown molding, recessed lighting, 3 windows with treatments, 2 large closets with auto-on lights, sitting room with carpet, 2 windows with treatments, built-in desk with drawers below and display shelving above, decorative fireplace with carved wood mantel and ceramic tile surround, linen closet, recessed lighting, en suite bath with vanity with Corian top, ceramic tile floor, full mirrored walls above vanity, shower over tub with tiled walls
- Bedroom #3 with carpet, recessed lighting, crown molding, 3 windows with wood blinds, built-in desk flanked by bookshelves, double door closet with shelving, en suite bath with Corian topped vanity with mirror above and storage below, window with bamboo shades, shower over tub with tiled walls, recessed lighting
- Bedroom #4 with carpet, 4 windows with treatments, built-in desk with shelving units, 2 double door closets, additional storage closet with shelving, recessed lighting, crown molding, en suite bath with Corian topped vanity, full wall framed mirror above, storage below, hand painted tile wall and floor, shower over tub with hand painted tile wall, recessed lighting
- Bedroom #5 with carpet, crown molding, recessed lighting, 2 large windows with bamboo shades, double door closet with shelving, en suite bath with Corian topped vanity with large tile framed mirror above, shower over tub with tiled walls, recessed lighting
- Bedroom #6 with carpet, angled volume ceiling, built-in desk with book shelves, built-in dresser, large picture window and 3 additional windows, bedside wall mounted reading lights, crown molding, 2 skylights with retractable shades, chandelier, walk-in cedar closet with shelving, double door closet, under-eave storage closet, en suite bath with ceramic tile floor, vanity with Corian top, cabinets below and full mirrored wall and 2 sconces above, glass enclosed shower, recessed lighting, large window with shade
- Office with French door entry, carpet, custom built-ins include desk, shelving and file drawers, tray ceiling, recessed lighting, 2 banks of windows, additional office storage just outside French doors

Third Level

- Bedroom #7 with carpet, built-in desk with book shelves above, additional built-in with drawers and shelving, crown molding, recessed lighting, angled wall, 3 windows with Roman shades, large closet with shelving, en suite bath with linen closet, ceramic tile floor, recessed lighting, double door closet, access to attic storage, vanity with Corian top, storage cabinets below, large mirror and window above, stall shower with glass door and tiled walls, separate commode are with storage
- Storage Room with shelving and access to utilities

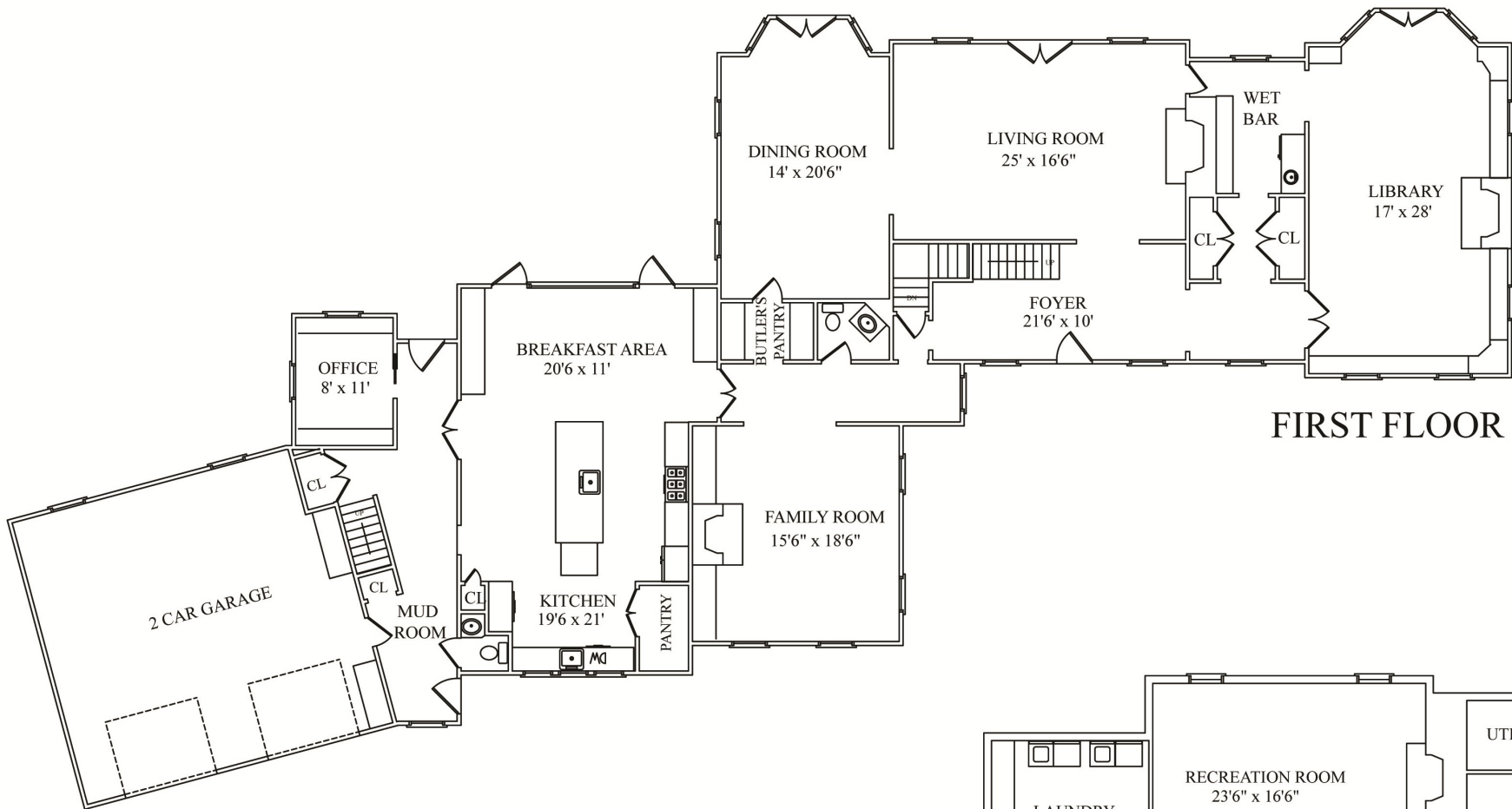
Lower Level

- Recreation/Media Room with carpet, coffered ceiling, recessed lighting, built-in ceiling speakers, fireplace with stone surround and wood beam mantel, raised panel wainscoting, 2 grade level windows
- Exercise Room with carpet, full mirrored wall, recessed lighting, window, walk-in closet, wall mounted TV, access to utilities
- Bonus Room/Craft Studio with French door entry, ceramic tile floor, grade level window, recessed lighting, full wall built-in with cabinets and Corian counter
- Laundry Room with ceramic tile floor, 2 Tromm front load washers, 2 Tromm front load dryers, storage cabinets, folding counter with cabinets below, drying rack, storage closet, stainless steel utility sink, recessed lighting
- Utility Room with storage and supplemental refrigerator/freezer
- Powder Room #3 with ceramic tile floor, vanity with marble top, mirror above and storage below, wainscoting, 2 sconces
- Wet Bar with custom built-in with tile backsplash, prep sink, cabinets with under-cabinet lighting, recessed lighting, carpet

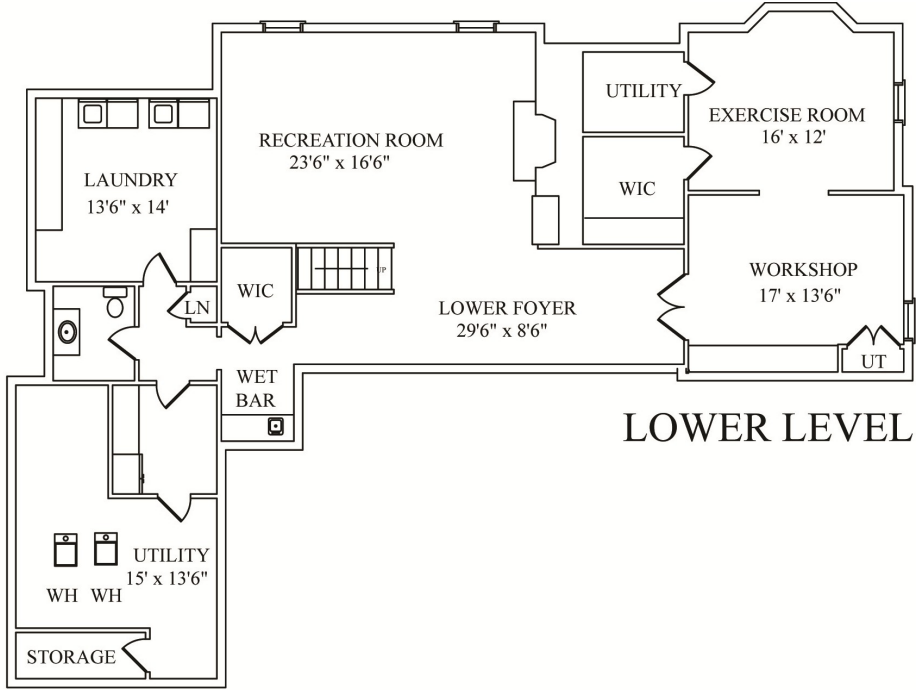
Additional Features/Upgrades

- 1.7+ acre park-like professionally landscaped property featuring several entertainment-friendly bluestone terraces overlooking landscaped grounds featuring boxwoods, mature hedgerows, colorful perennials, sweeping green lawns and mature trees, underground sprinkler system, circular driveway, direct gas line for barbeque
- Originally built in 1935, a 1992 major renovation added dual wings and numerous updates
- Full Kitchen renovation (2007)
- Security system
- 6-Zone forced air HVAC system
- Water softener
- 2 Hot water heaters



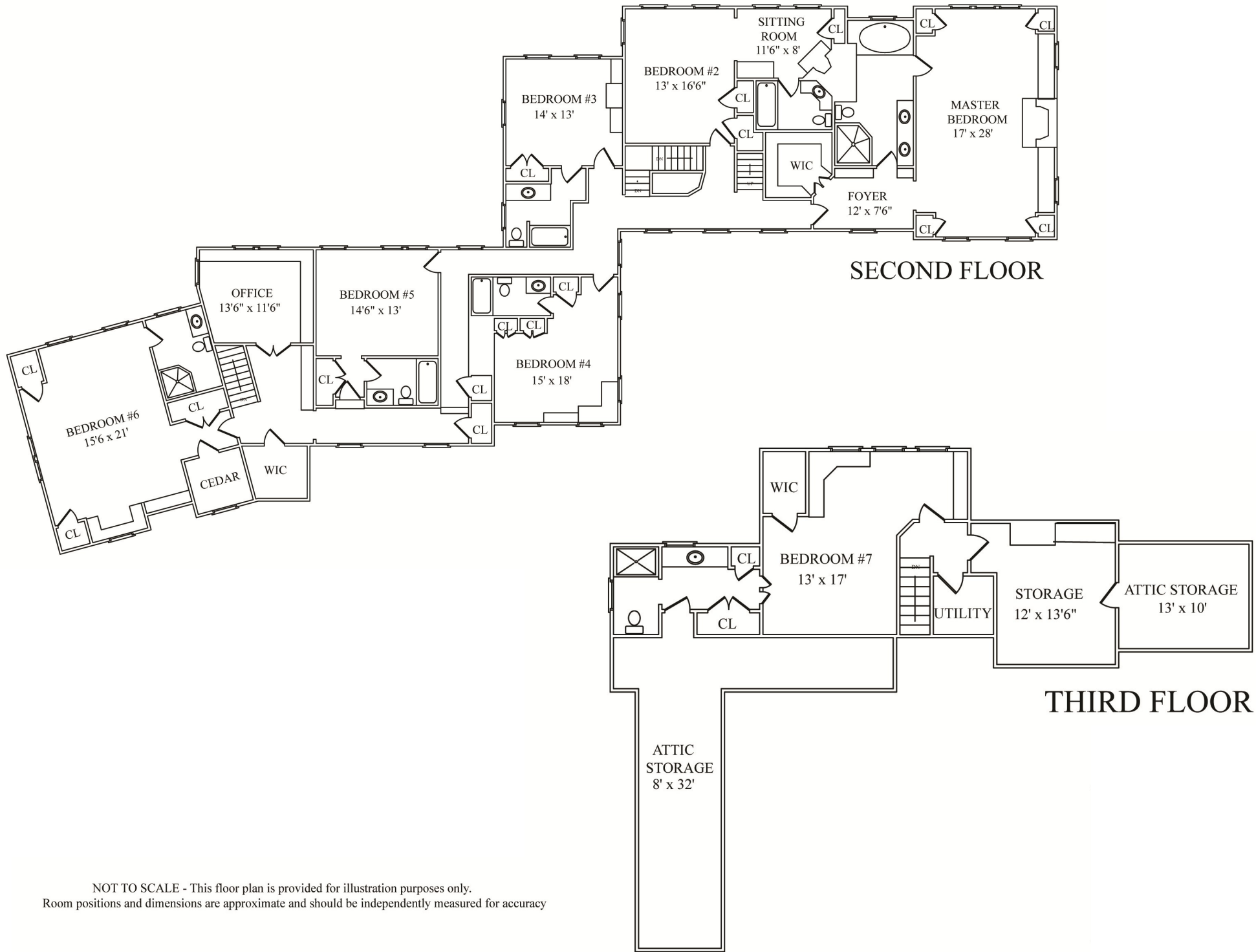


FIRST FLOOR



LOWER LEVEL

NOT TO SCALE - This floor plan is provided for illustration purposes only. Room positions and dimensions are approximate and should be independently measured for accuracy



NOT TO SCALE - This floor plan is provided for illustration purposes only.
 Room positions and dimensions are approximate and should be independently measured for accuracy



Sue Adler
KELLER WILLIAMS
PREMIER PROPERTIES



Cell: (973) 975-0197
Office: (973) 376-0033 x101
Sue@sueadler.com
www.sueadler.com/20Hardwell

sueadler 
THE #1 KELLER WILLIAMS TEAM IN NEW JERSEY **team**