

16 Claremont Drive

Short Hills, New Jersey



Sue Adler
KELLER WILLIAMS
PREMIER PROPERTIES

sueadler 
THE #1 KELLER WILLIAMS TEAM IN NEW JERSEY team

Each Keller Williams office is independently owned and operated.



Perfect is the best way to describe this gorgeously maintained, fully updated colonial located at 16 Claremont Drive in the sought-after Glenwood section of Short Hills. From the moment you walk through the stately columned front portico and into the inviting Entry Foyer, the appeal of this special home is sure to be appreciated.

Step through the elegant front door and instantly feel the warmth of this move-in ready home. Newly stained dark hardwood floors stretch from front to back and lead to each of the well-planned living and dining spaces found on the first level. Through a broad archway to the right is the spacious Living Room, with a Family Room set up, highlighted by chic custom window treatments and a striking fireplace featuring an intricately carved wood mantel, brick surround and stone hearth – it's sure to take center stage as friends and family gather in this newly decorated room. The room flows easily into the neighboring Home Office/Homework Area. Here, custom cabinetry complete with three separate work stations assures the perfect place to get work done.

The hardwood floors continue from the office through to the Kitchen, where preparing meals is a delight thanks to the newly refinished custom cabinetry, high-end stainless steel appliances, Caesarstone countertops, a striking slate tile backsplash and a large center island with breakfast bar and built-in wine cooler. Sit down to a casual meal in the adjacent Breakfast Area complete with sliding doors leading to the deck with gas hookup for the perfect BBQ evenings. For more formal occasions, the island can double as a buffet just step through the swinging door to the Dining Room highlighted by custom wainscoting, new modern wallpaper and window treatments. It's a truly elegant space that's perfect for intimate dinner parties and grand holiday celebrations alike. A conveniently located Powder Room and a Breezeway leading to the attached garage complete the first level living space.



When it's time to retire for the night, proceed up the center staircase to the second level that's home to 4 generous sized bedrooms and 2 full bathrooms accessed via a spacious gallery landing. The light filled Master Bedroom Suite awaits and is sure to provide a relaxing retreat. Here you'll find richly hued hardwood floors, plenty of closet space including a large professionally outfitted walk-in closet, 2 reach in closets and a dedicated shoe closet. There is a conveniently located en suite bath featuring custom cabinetry with granite topped vanity and make-up counter, marble subway tiled shower and separate commode. Three additional light filled bedrooms, each with carpet and plenty of closet space, and an easily accessed full hall bath adjacent to a fully equipped Laundry Room round out the second level. In the center of the hallway you'll find the pull down stairs to attic storage and a whole house fan for those breezy nights.

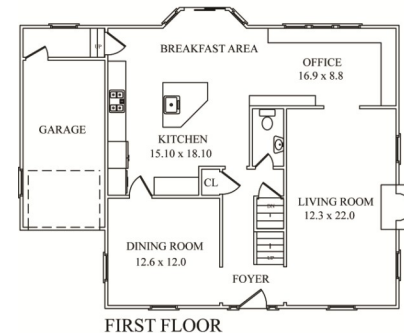
And there's more! Do not miss the finished lower level, boasting a Recreation Room with storage and a built-in entertainment center, as well as a utility room complete with additional storage space and a utility sink. Back outside, find a private rear yard with plenty of space for outdoor games and hobbies. Step up to the freshly stained raised wood deck with direct gas line - just bring your grill for perfect summer nights dining al fresco with friends and family.

With its sought-after location just a half mile to the Short Hills Train Station, a short walk to Glenwood School, Blue Ribbon Millburn High School, annual block party, world class shopping and restaurants, 16 Claremont Drive is the perfect place to call your new home.

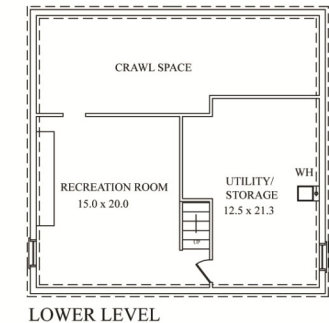
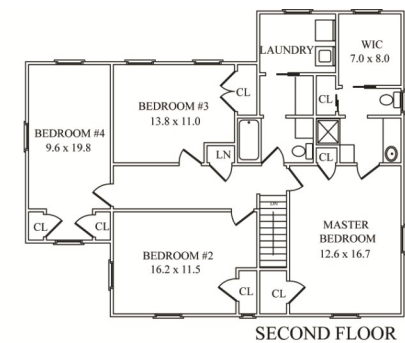
Inside and Out...

First Level

- Front to back entry Foyer with hardwood floors, dentil molding, chair rail, coat closet, JELD-WEN front door with glass sidelights, 2 ceiling fixtures
- Living Room with hardwood floors, dentil molding, recessed lighting, fireplace with detailed wood mantel, brick surround and bluestone hearth, built-in surround sound speakers, wired for TV over fireplace, 3 large windows with custom window treatments; broad archway to Home Office/Homework Area
- Dining Room with broad entry, hardwood floors, chandelier, dentil molding, chair rail/wainscoting, 2 windows with custom window treatments; modern neutral wall paper, swinging door to Kitchen
- Large Island Kitchen with hardwood floors, tons of custom cabinetry, Caesarstone counter tops, slate stone backsplash, high end stainless steel appliances including Thermador double wall electric/convection oven, Sub-Zero refrigerator/freezer, Thermador 5-burner cooktop, built-in Bosch microwave oven, Thermador dishwasher and Marvel wine cooler, large center island with breakfast bar and stainless steel sink with disposal, recessed lighting; open to spacious Breakfast Area, chandelier and sliding doors to deck with gas line for grill, 2 additional Pella windows with inset mini-blinds; open to Home Office/Homework Area, access to breezeway with hardwood floors and recessed lighting leading to attached garage
- Home Office/Homework Area with hardwood floors, custom built-in cabinetry including 3 work stations with electrical and wiring for computers, file drawers, cork board, overhead cabinetry, decorative transom window, recessed lighting, wall of built in shelving, roll out Pella windows with inset privacy blinds, overlooking backyard; open to Living Room
- Modern renovated Powder Room with tile floor, wall mounted Lacava sink with mirror and light fixture above, Toto toilet



NOT TO SCALE - This floor plan is provided for illustration purposes only.
Room positions and dimensions are approximate and should be independently measured for accuracy.



Second Level

- Gallery Landing with hardwood floors, carpet runner, 2 light fixtures, pull-down stairs to attic storage, linen closet with shelving
- Master Bedroom Suite with hardwood floors, recessed lighting with bedside reading spotlights, shoe closet, additional storage closet, access to renovated and expanded en suite bath/dressing area featuring ceramic tile floor, custom vanity with soft-close drawers, granite counter and make-up table with framed mirror and transom window above, recessed lighting, floor to ceiling medicine cabinet, glass door shower with marble tiled walls and decorative tile border, built-in corner shelf; step-up to separate commode with access to large Professionally Outfitted Reach in Closet and pocket doors to walk-in closet with custom shelving, Pella window with inset blinds, ceramic tile floor
- Bedroom #2 with carpet, closet with custom shelving, 2 Pella windows with wood blinds, ceiling fan with light
- Bedroom #3 with carpet, ceiling fan with light, 2 large Pella windows with wood blinds, double-door closet with California Closets
- Bedroom #4 with carpet, 3 Pella windows with wood blinds, 2 large closets with custom shelving, ceiling fan with light
- Renovated and expanded Hall Bath with tile floor, vanity with Corian top, glass shelf, mirror and light fixture above, storage cabinets below, shower over tub with tiled walls, recessed lighting; step up access to Make-up/Blow Dry station with ceramic tile floor, tri-fold mirror, Corian counter and light fixture above; pocket door to Laundry Room
- Laundry Room with ceramic tile floor and walls, GE Profile dryer, Whirlpool Duet front load washing machine, shelving with hanging racks, Pella window with inset mini-blinds
- Pull down stairs to attic storage

Lower Level

- Recreation Room with ceramic tile floor, recessed lighting, custom entertainment center, newer grade level windows, 3 wall mounted surround speakers
- Utility/Storage Room with double slop sink

Additional Features and Upgrades

- 1-car garage with electric door, Garage Tek shelving and storage cabinets
- Driveway repaved and expanded to double width (2010)
- 2-Zone gas forced air heat/AC
- Professional landscaping redesign in 2012 included new shrubbery, walkways
- Underground sprinkler system and raised wood deck (refinished and stained in 2017) with natural gas line for barbeque
- Full exterior painting completed (2017)
- Most interior repainted between 2012 and 2017
- Refinished hardwood floors throughout home (2012)
- Pella windows with inset mini blinds installed throughout most of home over the years (excluding Living Room and Dining Room which are original)
- New JELD-WEN Aurora front door with side lights and keyed & keyless entry (2012)
- New Garage door (2012)
- Portico installed (2012) with newly rebuilt stoop and flagstone walkway
- Kitchen update (2012) including cabinetry refinishing, new stainless steel appliances, Caesarstone countertops, brushed nickel knobs, new lighting fixture, and new slate stone backsplash
- Full Home Office/Homework Area (2006)
- Powder Room remodel (2012)
- Dining Room updated (2012) with new wainscoting and custom window treatments
- Living Room Surround Sound speakers & wired for TV over fireplace (2014)
- First floor addition includes kitchen expansion/office/breezeway to garage
- Second floor addition (2004) includes Laundry Room, Master Bedroom walk in closet, Master Bedroom and Hall Bathroom expansion and renovation
- Renovated Master shower (2013)
- Bedroom #2 new carpet installed (2012)
- Roof replacement (2011)
- Hot water Heater (approx. 2014)

Cell: (973) 936-9129
Office: (973) 376-0033 x101
admin@sueadler.com
www.sueadler.com/16Claremont