

28 Whitney Road

Short Hills, New Jersey



Sue Adler
KELLER WILLIAMS
PREMIER PROPERTIES

sueadler 
THE #1 KELLER WILLIAMS TEAM IN NEW JERSEY team

Each Keller Williams office is independently owned and operated.



Welcome to 28 Whitney Road! Move right in or renovate this 3 Bedroom, 3 Bathroom 1920s Colonial, located on a level lot on a quiet, family-friendly street in Short Hill's sought after Knollwood neighborhood. With an exceptional location just steps from downtown Millburn restaurants and shopping, Direct Train to NYC and top-rated schools, this house cannot be missed!

Curb appeal abounds as you drive up to this picture perfect colonial with charming black shutters, regal pillars, delightful front porch and professionally landscaped front yard. Enter through the welcoming front door into the sun-drenched Living Room with gleaming hardwood floors, warm and inviting fireplace with detailed millwork and elegant French doors leading out to a large deck. Right off the Living Room find the conveniently located Family Room featuring 3 sets of sliding doors and a great view of the lush, flat property. Doors from the Back Hallway, Living Room and Family Room flow easily to the enormous outdoor deck and lush, flat lawn perfect for relaxing or hosting barbeques al fresco.



Ready to retire for the evening? Sunlight abounds in the Second Floor Landing with 2 spacious closets for storage. 3 bright and cheery Bedrooms (one being en suite) provide plenty of living space, ample room for storage and will meet all your personal needs. A spacious and nicely renovated Full Bathroom serves the other 2 bedrooms.

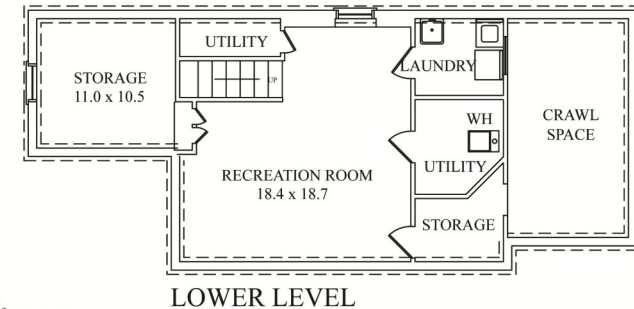
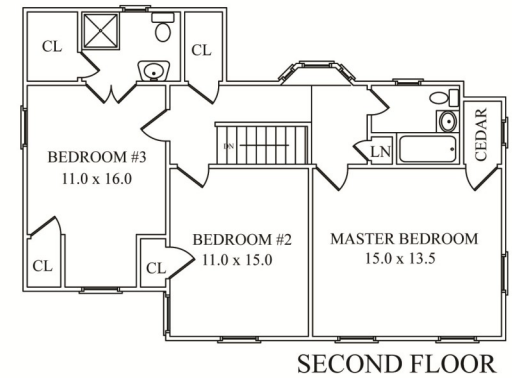
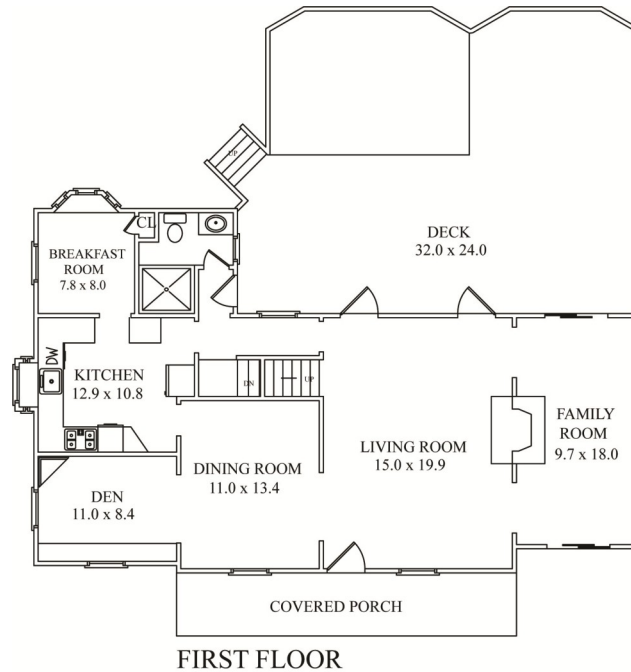
And there's more! The partially finished basement has a large Recreation Room perfect for children's play or movie watching, utility rooms, plenty of room for storage and a spacious Laundry Room.

28 Whitney Road is an incredible value and a great opportunity to become part of a community just minutes from Blue Ribbon schools, NYC transportation, luxury shopping and downtown Millburn.

Inside and Out...

First Level

- Wood Front Door with divided lites
- Living Room featuring hardwood floors, crown and dentil molding, baseboard molding, 2 French doors, wood burning fireplace with brick surround and detailed millwork, sconces flanking fireplace, freshly painted off white
- Family Room featuring 3 sets of sliding doors, baseboard molding, recessed lighting, carpeting
- Dining Room featuring hardwood floors, dentil and crown molding, ceiling medallion and new chandelier, wainscoting, baseboard molding, freshly painted off white
- Library/Office featuring built-in bookshelves and lower cabinets, built-in corner storage cabinet, new modern ceiling fixtures, carpeting, wood paneling
- Kitchen featuring deep bay window, wood cabinetry, Formica countertops, recessed lighting, stainless steel GE wall oven, GE cooktop, GE dishwasher, Broan stainless steel exhaust fan, stainless steel Kitchen Aid refrigerator, new flooring
- Breakfast Room featuring deep bay window, new flooring, chandelier
- Pantry/Coat closet
- Hallway featuring new flooring, recessed lighting, Rear Doorway
- Updated Full Bathroom featuring bead board wainscoting, shower with chrome fixtures and glass door, glass shelf over toilet, vanity with storage, wood framed mirror with 2 light sconce above, laminate flooring



NOT TO SCALE - This floor plan is provided for illustration purposes only.
Room positions and dimensions are approximate and should be independently measured for accuracy.

Second Level

- 2nd Floor Landing featuring large bay window, newly refinished hardwood floor, recessed lighting, linen closet, deep storage closet, baseboard molding
- Updated Full Bathroom featuring bead board wainscoting, shower/tub combination with chrome fixtures, glass shelf over toilet, vanity with storage, wood framed mirror with 2 light sconce above, laminate flooring
- Master Bedroom featuring newly refinished hardwood floor, recessed lighting, 3 windows, cedar closet, baseboard molding
- Bedroom #2 featuring newly refinished hardwood floor, baseboard molding, closet, 2 windows
- Bedroom #3 featuring newly refinished hardwood floor, baseboard molding, 2 windows, 2 closets
- Ensuite Bathroom for Bedroom #3 featuring pedestal sink, stall shower (not working) and laminate flooring

Lower Level

- Carpeted stairway to basement
- Recreation Room featuring carpeting, recessed lighting, paneling
- Storage Room
- Utility rooms for furnace, electric and water heater
- Laundry Room with utility sink

Additional Features and Upgrades

- Detached 1 Car Garage with Carport
- Decorative weathervane over garage
- New Water Heater (2016)
- Driveway repaved (2013)
- Air Conditioning replaced (2012)
- Alarm System updated (2015)
- Deck Awning replaced (2016)
- Updated sump pump, sump pump back up pump and French drains

Backyard/Landscaping

- Huge deck with wood railings
- Fenced in Yard
- Manicured Landscaping

Sue Adler
KELLER WILLIAMS
PREMIER PROPERTIES



Cell: (973) 936-9129
Office: (973) 376-0033 x101
admin@sueadler.com
www.sueadler.com/28Whitney