

10 NOE AVENUE
MADISON, NJ

Cell: (973) 936-9129
Office: (973) 376-0033 x101
admin@sueadler.com
www.sueadler.com/10Noe



Sue Adler
KELLER WILLIAMS
PREMIER PROPERTIES

Each Keller Williams office is individually owned and operated.

sueadler 
THE #1 KELLER WILLIAMS TEAM IN NEW JERSEY **team**

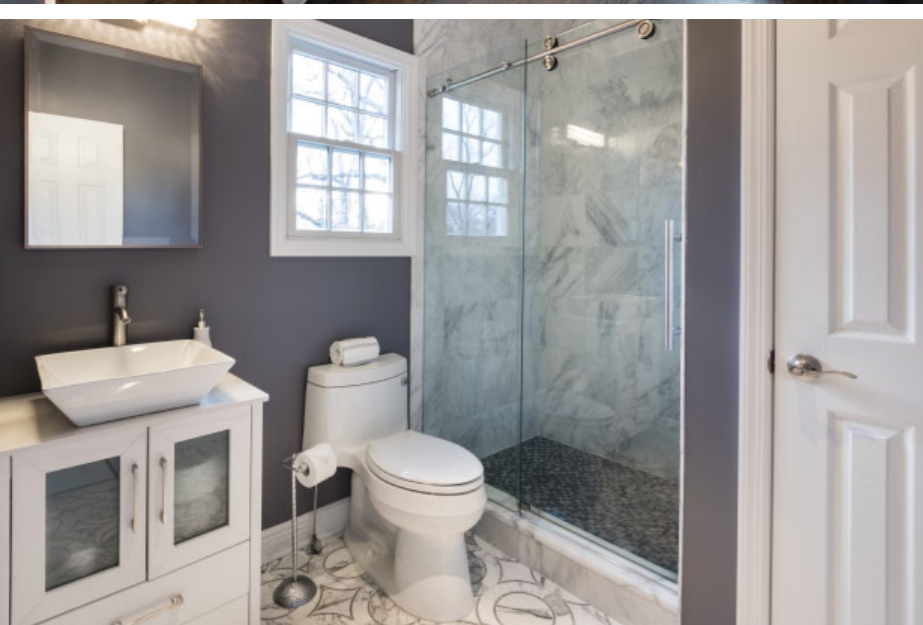
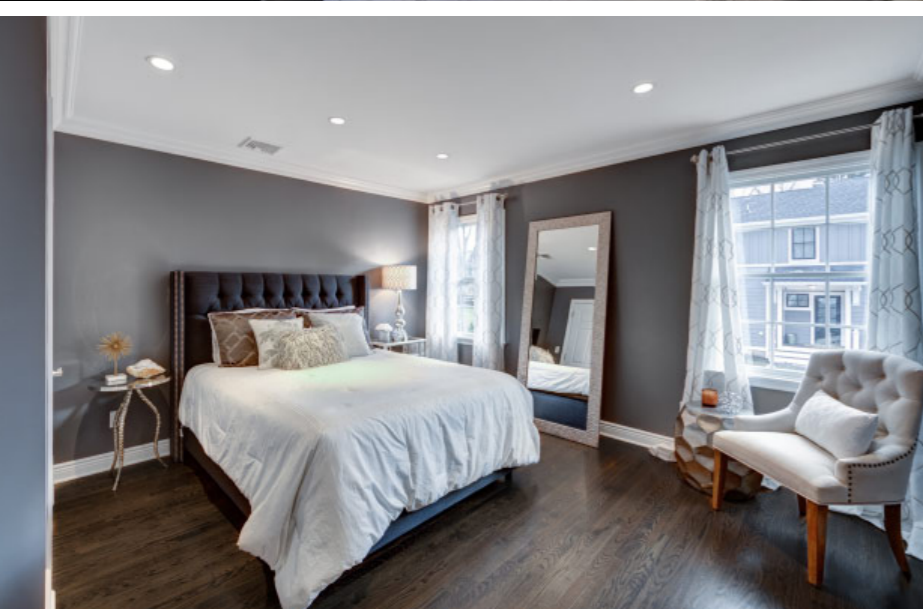




Situated on a huge lot in the sought after Hills section of Madison sits this spectacular Like New 5 Bedroom, 4 and ½ Bath Nantucket Style home, a vision of perfect proportion and detail. Stroll up the front walkway to the stunning front porch perfect for rocking chairs and lemonade. Enter the spacious Entry Foyer and prepare to be overwhelmed by the sheer elegance of this home. With luscious hardwood floors, an open floor plan and designer touches at every turn, the First Level is the consummate example of high design and function.

Beauty abounds in the gracious Living Room featuring soothing grey hues, custom moldings and easy access to the impressive Dining Room. Flow easily through the large archway into the Dining Room featuring chic wallpaper and stunning chandelier. Don't miss the stunning Office/Library built in 2016. Custom built-ins, designer light fixtures, elongated windows and access to the outdoor entertaining space all make this room exceptional and the perfect home office. The Dining Room also connects easily to the impressive Gourmet Chef's Kitchen that will satisfy any cook's desire. Crisp white Shaker style custom wood cabinetry with gorgeous custom island with seating for 3, Bar Area with custom cabinetry, Calcutta marble countertops and top of the line appliances make the Kitchen extraordinary. A Laundry Room and Pantry, hidden by a pocket door, is conveniently located just off the Kitchen. The real show stopper of the First Level is the amazing Family Room/Sun Room with two distinct entertaining spaces. Enjoy movie night or cuddling up in the spacious upper area featuring a coffered ceiling and cozy fireplace with stone surround. The lower part of the Family Room dazzles with a vaulted bead board ceiling, elongated windows and double French doors leading out to the substantial Patio. The Patio, with both a dining and conversational area, is perfect for al fresco dining or just spending time with friends. Rounding out the 1st Floor is an ultra-chic Powder Room with custom vanity and wallpaper.





When it's time to retire for the evening, the stately staircase, beaming with natural light, leads you to the second floor with 5 spacious bedrooms and 4 full baths. Luxury abounds in the enormous Master Bedroom Suite (built in 2016) drenched in sunlight with vaulted ceilings and a Sitting Room. The Master Suite is functionally designed with generous Dual Walk-In Closets with custom storage and a spa-like Master Bathroom that will knock your socks off. A huge shower for 2 with dual rain showerheads, custom dual vanity and amazing tile are just a few of the Master Bath's hallmarks. 4 additional large-sized bedrooms (1 ensuite, 1 Jack and Jill and 1 Hallway) are steeped in sunlight and include roomy closets. All the baths impress with brilliant tile and gorgeous showers.

And there's more...The Lower Level, with its fabulous Recreation Room/Children's Arts and Crafts Room is an entertainer's paradise. A partially finished Utility Room offers tons of possibility for adding an Exercise Room and/or Wine Cellar.

10 Noe Avenue is a dream home in every way. Just minutes from Blue Ribbon schools, NYC transportation, luxury shopping and downtown Madison and Chatham, this home simply will not last!

INSIDE AND OUT...

First Level

- Entry Foyer featuring hardwood floors, wainscoting, coat closet, crown molding, baseboard molding, chandelier with crystal detail, wood staircase to second level
- Living Room featuring hardwood floors, baseboard molding, crown molding, picture window with true divided lights, custom window treatments
- Dining Room featuring hardwood floors, wall paper, baseboard molding, crown molding, windows with true divided lights, custom window treatments, designer glass chandelier, double French doors to Office/Library
- Office/Library (new 2016) featuring double French doors at entry, hardwood floors, elongated windows with true divided lights, sliding French door to outdoor entertaining area, crown molding, baseboard molding, custom built ins with open and concealed storage, orb light fixture, sconces, recessed lighting
- Gourmet Chef's Kitchen featuring hardwood floors, custom wood shaker style cabinetry, Calcutta marble countertops and backsplash, island with storage, quartz countertop, stainless sink and seating for 3, casement windows, recessed lighting, pendant lighting over island, stainless sink under window, commercial style faucet, Viking stainless 6 burner oven/range, Viking stainless hood, Bosch stainless dishwasher, Panasonic built-in stainless microwave, GE stainless refrigerator/freezer, dry bar area with Calcutta marble countertops and backsplash, bead board backsplash, wine storage, custom cabinetry including glass door cabinetry
- Breakfast Area featuring hardwood floors, windows with true divided lights, overlooking Family Room
- Oversized Family Room with 2 distinct entertaining areas, Upper Area featuring hardwood floors, coffered ceiling, recessed lighting, wood burning fireplace with floor to ceiling stone surround, crown molding, baseboard molding, door to garage, door to basement, custom railing overlooking Lower Area, step down Lower/Sun Room Area featuring hardwood floors, 15 foot vaulted ceiling with bead board detail, French doors to outdoor entertaining area, ceiling fan, elongated windows with true divided lights, crown molding, baseboard molding, sconces, double French doors to outdoor entertaining space
- Laundry Room/Walk In Pantry featuring pocket door at entry, hardwood floors, floor to ceiling shelving, LG stainless front loader washer and dryer, flush mount light fixture
- Powder Room featuring marble tile with marble inlay, wallpaper, flush mount light fixture with crystal detail, 3

- light crystal sconce, designer custom vanity with marble countertop, custom mirror with beveled glass, Kohler toilet, crown molding
- 3 car garage with electric doors and storage

Second Level

- Wood staircase to second level with beaded pendant light fixture
- Second Floor landing featuring hardwood floors, baseboard molding, crown molding, recessed lighting, pull down attic access
- Master Bedroom Suite (new 2016) featuring hardwood floors, vaulted ceiling with custom millwork, chandelier with crystal detail and drum shade, windows with true divided lights, crown molding, baseboard molding, Sitting Area featuring hardwood floors, recessed lighting, baseboard molding, crown molding, Dual Walk In Closets with custom adjustable shelving, drawers and hanging storage, "Her" closet with vanity area
- Master Bathroom featuring marble floor tile, oversized shower for 2 with frameless glass door, dual rain showerheads, marble tile with tile accent feature, mosaic floor tile, recessed lighting, pendant light fixture with drum shade, custom wood vanity with storage and tile accent drawers, marble countertop, custom mirrors, 3 sconces with crystal detail, crown molding, separate room for toilet, Kohler toilet
- Ensuite Bedroom #2 featuring hardwood floors, recessed lighting, baseboard molding, crown molding, closet, windows with true divided lights, custom window treatments, ensuite bathroom featuring marble floor tile, wall mounted vanity with storage and ceramic countertop, Kohler toilet, shower with marble tile and glass door, recessed lighting, sconce over mirror, window with true divided lights, Kohler toilet
- Bedroom #3 featuring hardwood floors, recessed lighting, baseboard molding, crown molding, Walk In Closet with custom adjustable shelving and hanging storage, windows with true divided lights, designer window treatments, accent wall
- Jack and Jill Full Bath for Bedrooms 4 and 5 featuring designer marble floor tile, glass door shower featuring marble tile surround and mosaic floor tile, custom vanity with vessel sink, recessed lighting, sconce over sink, Kohler toilet
- Bedroom #4 featuring hardwood floors, recessed lighting, baseboard molding, crown molding, Walk In Closet with custom adjustable shelving, drawers and hanging storage, windows with true divided lights, designer window treatments

- Bedroom #5 featuring hardwood floors, recessed lighting, crown molding, baseboard molding, closet with shelving
- Full Hall Bathroom featuring marble floor tile, tub/shower combination with marble tile surround, custom wood vanity with storage and marble countertop, flush mount light fixture with bead detail, 2 sconces with bead detail, Kohler toilet, linen closet with floor to ceiling shelving

Backyard/Landscaping

- Approximately ¾ Acre
- Paver patio with stone retaining walls with both dining and conversational areas
- Fire Pit
- Meticulously landscaped
- Fenced in yard
- Storage shed

Lower Level

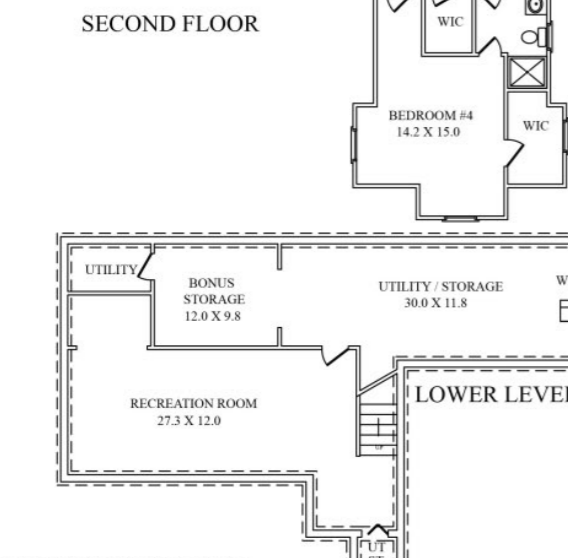
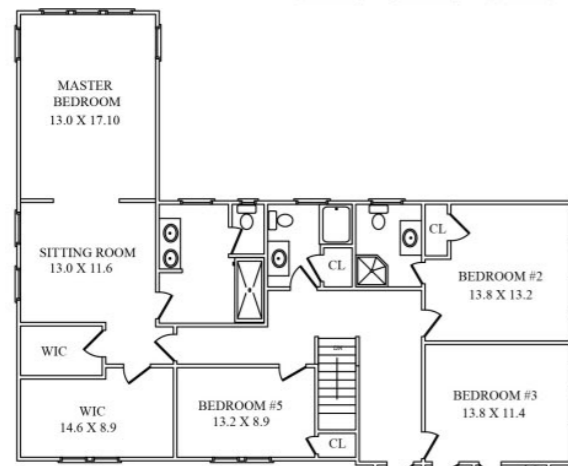
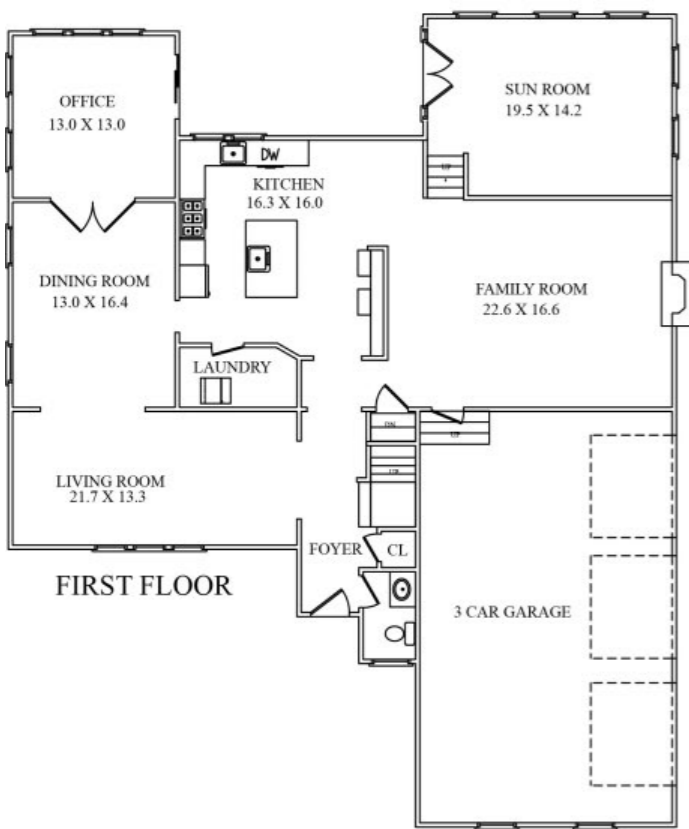
- Carpeted staircase to Lower Level
- Recreation Room featuring wood look tile flooring, recessed lighting, crown molding, baseboard molding, utility closet, office/homework nook
- Utility Room with partially finished area (easily converted to wine cellar, art studio or exercise area)

Additional Features/Upgrades

- Alarm System
- Irrigation
- Sump pumps and French drains







NOT TO SCALE - This floor plan is provided for illustration purposes only. Room positions and dimensions are approximate and should be independently measured for accuracy.

