

18 EXETER ROAD | SHORT HILLS, NJ



kw PREMIER
PROPERTIES
KELLERWILLIAMS

Each Keller Williams office is individually owned and operated.

sueadler 
THE #1 KELLER WILLIAMS TEAM IN NEW JERSEY team



Welcome to 18 Exeter Road, a stately brick fronted colonial in the sought after Short Hills community. Originally built in 1953, this fabulous family home boasts numerous updates along with its original charm and character. Proceed up the meandering stone pathway, through the front door into the welcoming Entry Foyer and your first taste of all this home has to offer. The beautifully maintained original wood floors lead you to all the inviting living and entertaining spaces. Through an archway to the right is the light filled Living Room – a spacious entertaining space where an impressive wood burning fireplace with wood mantel and marble surround takes center stage. Family and friends are sure to enjoy gathering here for intimate conversation or grand holiday celebrations alike. Take a step down to the heart of the home where you'll find a fully updated eat-in Kitchen outfitted with custom cabinetry, high end appliances, a spacious granite topped center island/breakfast bar as well as conveniently located laundry facilities found behind a set of bi-fold doors. Sit down for a casual meal in the dining nook, or for a more formal occasion, step into the neighboring Dining Room highlighted by gleaming hardwood floors, crown molding and a contemporary chandelier. After the meal, pass through the doorway to the right to the welcoming Family Room that also has access to the entry foyer. It's the perfect place for you to relax with your favorite book or settle in for a family movie night. A fully updated marble Powder Room is just around the corner.





When it's time to retire for the night, proceed up the center staircase to the second level that's home to 5 generous sized bedrooms and 3 full bathrooms accessed via a gallery landing. The Master Bedroom Suite awaits and is sure to provide a relaxing retreat. Here you'll find richly hued hardwood floors, plenty of closet space in the cedar lined walk-in closet and a conveniently located en suite bath featuring marble topped dual vanities, a glass enclosed marble tiled shower and a spa-like jettted tub with marble surround. Bedroom #5 can be used as an alternate Master Suite and is highlighted by rich hardwood floors, an attractive bead board ceiling and another fully updated en suite bath. Three additional light filled bedrooms, each with wood floors and ample closet space, and an easily accessed fully updated hall bath round out the second level. And there's more! Do not miss the finished lower level, boasting a Recreation Room with plenty of storage, as well as another open space that provides the perfect location for a home gym, office or artist studio. The choice is yours to use as you see fit! Outside, you'll find lush greenery surrounding a flat rear yard with plenty of space for outdoor games and hobbies. Step up to the spacious two-tiered brick paver patio that has plenty of room for outdoor relaxation and al fresco dining on warm summer nights – truly your own private oasis! 18 Exeter Road boasts a sought-after location in an ideal family neighborhood with easy access to downtown Millburn shopping and restaurants. Access to Blue Ribbon schools and NYC transportation are icing on the cake! It's the perfect place to make your next home!



INSIDE & OUT

FIRST LEVEL

- Entry Foyer with wood floors, recessed lighting, crown molding, wood door with glass pane accents; archway to Living Room, Family Room, rear hallway leading to Dining Room and Powder Room, center staircase to second level
- Family Room with wood floors, crown molding, recessed lighting, 2 window banks with wood blinds, ceiling fixture, display shelving; doorway to Dining Room
- Dining Room with hardwood floors, crown molding, large window, recessed lighting, chandelier; access to lower level, Kitchen and Powder Room
- Kitchen featuring porcelain tile floor, custom cabinetry with granite counters and travertine backsplash, high end appliances including 2 GE Profile stainless steel ovens, DCS 5-burner stainless steel cooktop with exhaust hood above, Bosch dishwasher with integrated cabinetry panel, Sub Zero refrigerator/freezer with integrated cabinetry panel, stainless steel double sink, Kenmore built-in microwave, pantry closet with large pullout drawers, appliance "garage", granite topped center island with breakfast bar, storage cabinets, dining nook with outdoor access, fully windowed wall above with backyard views, additional window bank facing side yard, bi-fold doors to laundry nook with Kenmore front loading washer and dryer; archway to Living Room
- Living Room with wood floors, large wood burning fireplace with wood mantel, marble surround and hearth, recessed lighting, 3 windows with wood blinds, 2 built-in book case/display units flanking doorway; archway to entry foyer
- Updated Powder Room with marble tile floor and walls, pedestal sink with mirror and light fixture above

SECOND LEVEL

- Gallery landing with hardwood floors, track lighting, pull-down staircase to attic storage
- Master Bedroom Suite featuring hardwood floors, crown molding, ceiling fan, large windowed wall with bamboo shades, recessed lighting, baseboard heating, large walk-in cedar closet with shelving and drawers, en suite bath with marble tile floor and walls, MTI self-cleaning jetted tub with marble surround and chandelier above, glass enclosed marble shower with hand held and stationary shower heads, His & Hers vanities with marble tops, mirrors and light fixtures above, storage cabinets below, built-in shelving, baseboard heat, window with Roman shade
- Bedroom #2 with wood floors, crown molding, ceiling fan, recessed lighting 2 windows with wood blinds, walk-in closet
- Bedroom #3 with wood floors, ceiling fan, wardrobe, 2 windows with shades, large closet
- Bedroom #4 (Office) with wood floors, closet, window with shade, fluorescent light ceiling fixture
- Bedroom #5 (alternate Master Suite) featuring wood floors, angled bead board ceiling, recessed lighting, ceiling fixture, 2 large window banks with wood blinds, double door closet with custom shelving, en suite bath with porcelain tile floor, vanity with storage below, mirrored medicine chest and 2 sconces above, glass tile backsplash, glass enclosed shower with decorative tile accents and 2 shower heads, built-in shelving, window and recessed lighting
- Full Hallway Bathroom with porcelain tile floor, custom built-in with 2 sink vanity with granite top, rounded storage cabinets below, mirror and built-in lighting above, window with bamboo shade, glass door shower with decorative tile accents and 2 shower heads, recessed lighting, baseboard heating

LOWER LEVEL

- Carpeted staircase leads to finished lower level with flexible open space currently used as a Recreation Room and Home Gym with tile floor, grade level window and recessed lighting in dropped ceiling
- 3 Sump pumps
- Under-stair storage, storage closets, supplemental refrigerator/freezer and access to all utilities

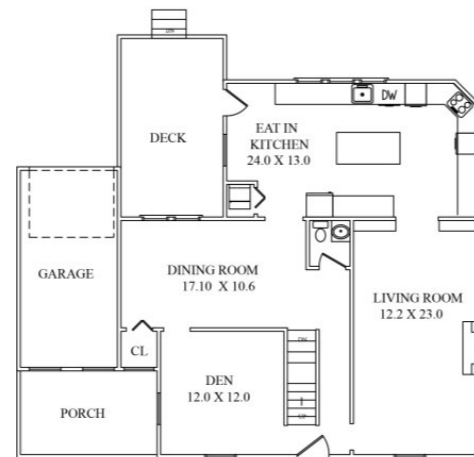
ADDITIONAL FEATURES

- Lushly landscaped property with a private, flat backyard featuring a 2-level brick paver patio
- 1-car garage with electric door
- 4-zone steam heat with supplemental baseboard heating
- 1-zone central air conditioning
- Security system
- Master Bedroom Suite, Bedroom #2 and Powder Room update completed (2010)

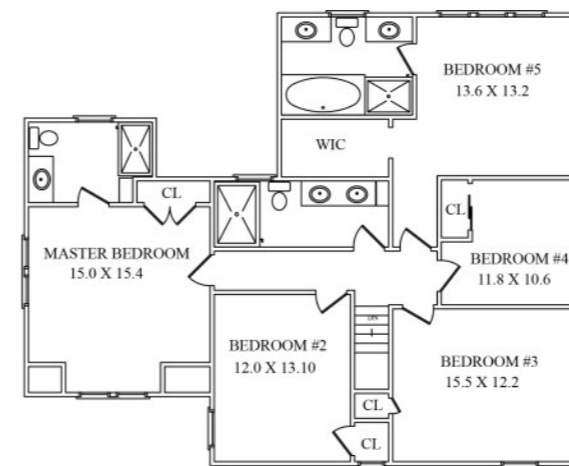


CELL: 973.936.9129
 OFFICE: 973.376.0033 x101
 info@sueadler.com
 sueadler.com/18exeter

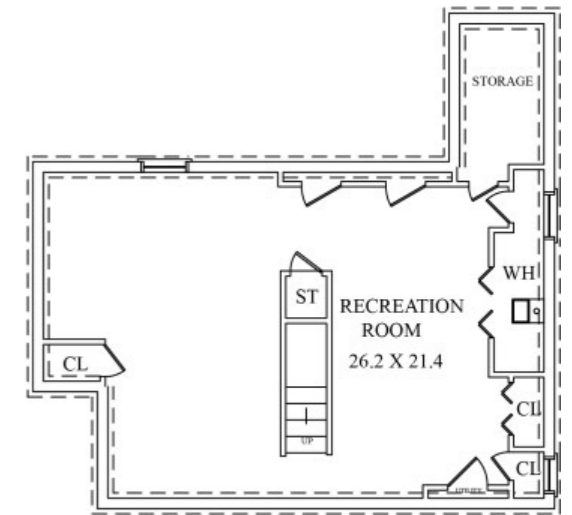
THE FLOORPLAN



FIRST FLOOR



SECOND FLOOR



LOWER LEVEL

The information contained herein has been obtained through sources deemed reliable by The Sue Adler Team, but cannot be guaranteed for its accuracy. We recommend to the buyer that any information, which is of special interest, should be obtained through independent verification. ALL MEASUREMENTS ARE APPROXIMATE.