

419 FAIRMOUNT AVENUE | CHATHAM, NJ

kw PREMIER
PROPERTIES
KELLERWILLIAMS

Each Keller Williams office is individually owned and operated.

sueadler 
THE #1 KELLER WILLIAMS TEAM IN NEW JERSEY **team**



Perched atop the hills of Chatham Township, 419 Fairmount offers a touch of country in the suburbs. Thoughtfully landscaped property with decorative trees and year-round blooms, this 1+ acre property is ideal for nature lovers and gardeners. This English style home offers 5 bedrooms and plenty of space with endless possibilities. Set back and private, two blue stone patios and a pool invite outdoor living and multiple entertaining areas. Large open rooms and abundant natural light permeate throughout the entire first level, accentuating pristine hardwood floors. A gourmet kitchen with custom cabinets, large center island and top of the line stainless steel appliances opens to a sun-drenched family room, living room and formal dining room, perfect for family dinners and entertaining guests alike.





The living quarters include a first and second level master suite with three additional bedrooms, numerous closets and built-in cabinets. The lower level offers a spacious recreation/game and exercise room complete with a perfect space for a wine cellar. A bonus, detached garage has ample space for a workshop area, artist studio or conversion to guest quarters. You will find it hard to believe that this diamond in the rough lies in one of the most desirable communities in New Jersey, with easy access to public transportation and highly rated schools.



INSIDE & OUT

FIRST LEVEL

- Bluestone front entryway with recessed outdoor light, aluminum railing leads to solid wood 1lite dual glass exterior door and frosted glass sidelites, Entry Foyer featuring hardwood floors, flush mount decorative light, baseboard and dental molding, coat closet with shelving, chair rail molding access to Living Room, Dining Room, door to Powder Room and Second Floor Stairway
- Living Room with hardwood floor, baseboard and dental molding, 2 large bow windows, wood burning fireplace with marble surround and built in cabinets and shelves
- Powder Room with ceramic tile, pedestal sink, one casement window, toilet, recessed light and mirrored medicine cabinet
- Dining Room with hardwood floors, decorative crystal chandelier, wall to wall built in china cabinet, large bay window overlooking the patio, one casement window and swing door to Kitchen
- Hallway with hardwood floors, two built in lighted cabinets with adjustable glass shelving, flush mount and track lighting, one window, baseboard and chair rail molding leading to exterior solid wood patio door with ¼ lite, Kitchen, stairway to Lower Level, 2 closets with shelving and Master Bedroom Suite
- Kitchen with hardwood floors, recessed lighting, lighted custom cabinetry with glass front access panel, stone countertop, center island (breakfast bar for four) with custom cabinets and pendant lighting, stainless steel appliances including Kobe hood, Blue Star 6 gas burner stove, double sink, Wolf microwave, Bosh dishwasher, Electrolux side by side refrigerator, double casement windows, ceramic tile backsplash, open to Family Room
- Family Room with hardwood floor, baseboard molding, built in book shelf, 3 side by side casement windows, pantry closet with shelving, sliding double doors to blue stone patio, open to Mudroom and doorway to carpeted back stairway
- Mudroom with custom shoe cabinet, hardwood floors, recessed lighting, coat closet with shelving, exterior steel door to driveway and garage
- Master Suite with hardwood floors, ceiling fan/light, two double sliding door closets with shelving, four casement windows, door to Master Bath with passport ensemble Jacuzzi tub, glass block window, recessed lighting, ceramic tile, double door closet, double sink with marble counter top and custom built in vanity, two vanity mirrors with lighting, Toto toilet, frameless glass shower with ceramic tile and surround marble, rain shower and surround shower spouts
- Bedroom #5 with hardwood floors, baseboard molding, track lighting, large side by side windows, closet with shelving

SECOND LEVEL

- Stairway with hardwood floor, double sconce, baseboard and chair rail molding and original aluminum railings leading to second floor Hallway with recessed lighting, hardwood floors, linen closet, 2 large walk in closets with shelving leading to two Bedrooms, Full Bathroom, En suite Bedroom and back second stairway to Family Room
- Bedroom #2 with hardwood floors, baseboard molding, ceiling fan/light, 2 double hung windows, two closets with shelving
- Bedroom #3 with hardwood floors, baseboard molding, 3 large double hung windows, 2 closets, walk in closet and attic
- Full Bath with ceramic tile, recessed lighting, window, vanity lights, built in cabinet with sink, tub with ceramic tile and Delta showerhead
- Bedroom #4 with carpeted floors, 2 closets with shelving, ceiling fan/light, baseboard molding, 3 double hung windows, Bathroom with ceramic tile, recessed lighting, mirror, built in cabinet with marble countertop, sink, window, tub with ceramic tile and Delta showerhead

LOWER LEVEL

- Stairway with carpeted risers to Lower Level featuring finished space for recreation/media/exercise room, recessed lighting, door to wine cellar, door to utility room with walk out stairway to side yard, laundry room with Kenmore front load washer/dryer, work room, 2 double door closets, 3 casement windows

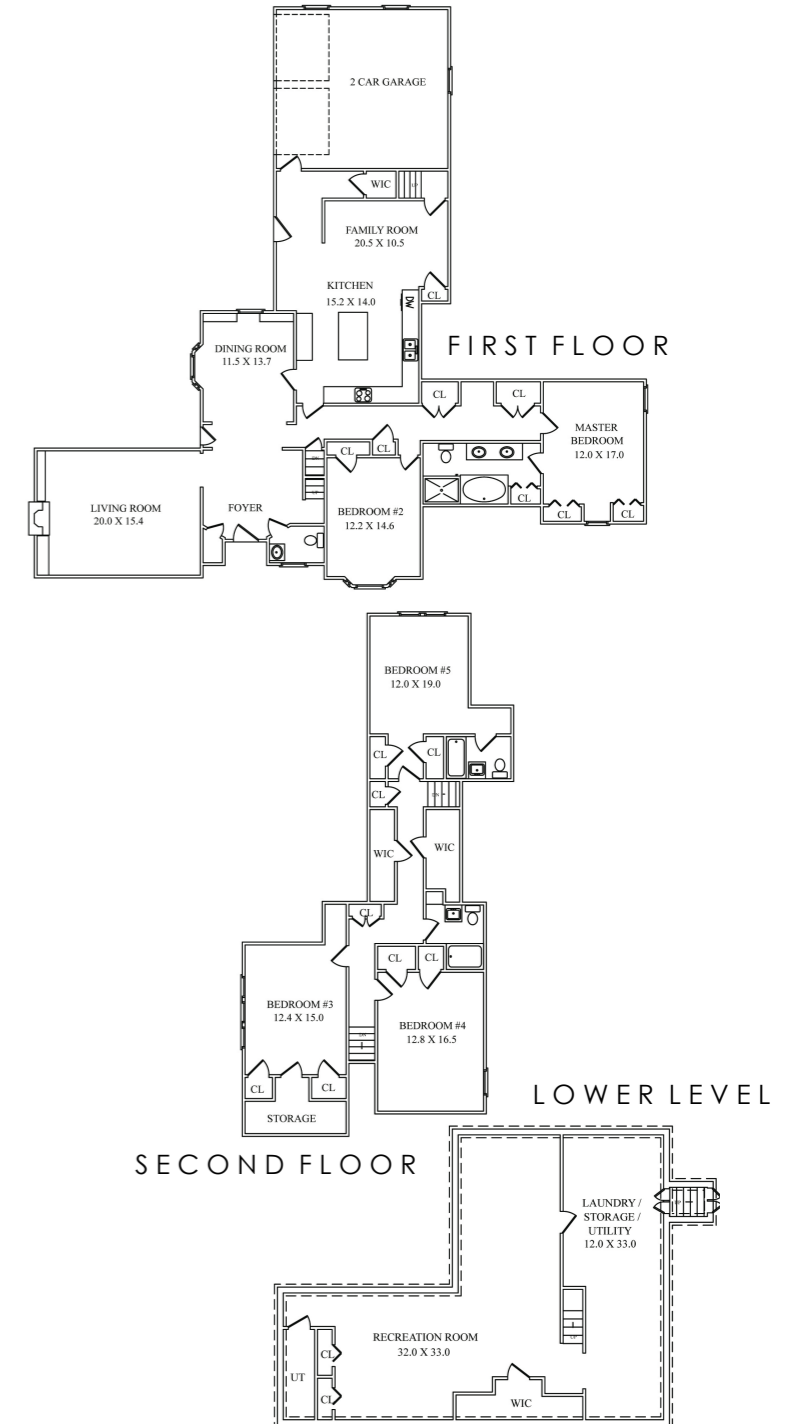
EXTERIOR FEATURES

- 2 car attached garage with new electric door openers with ¼ windows and 3 windows
- 2 car detached garage with pull down ladder to second level with 7 windows and electrical hook up
- 2 post lamps in front yard
- 2 separate blue stone patios with stone wall
- Private wood fenced in-ground pool with self-cleaning polaris and return, new pumps, new chlorinator and Hay filter
- Blue stone pathway to pool
- 4 newly built retaining walls
- Aluminum fenced in dog run or possible vegetable garden

ADDITIONAL FEATURES / UPGRADES

- Renovated Kitchen 2012 and bathrooms 2013
- 2018 hardwood floors on second level
- Newer Pella windows throughout second floor
- Climate control digital thermostat; high velocity cooling system
- Vermont Slate Roof

FLOORPLAN



CELL: 973.936.9129
 OFFICE: 973.376.0033 x101
 info@sueadler.com
 sueadler.com/419fairmount



The information contained herein has been obtained through sources deemed reliable by The Sue Adler Team, but cannot be guaranteed for its accuracy. We recommend to the buyer that any information, which is of special interest, should be obtained through independent verification. ALL MEASUREMENTS ARE APPROXIMATE.