

11 FENTON DRIVE
SHORT HILLS, NJ





Welcome to 11 Fenton Drive! This picture perfect 4 Bedroom, 4 ½ Bath Custom home, located in the sought after Deerfield section of Short Hills, hits all the right notes. Enjoy all this home has to offer with top-notch schools only steps away, proximity to New York City, Midtown Direct train and easy access to downtown shopping and restaurants.

Drive up the quiet, tree-lined street to find this park-like, and meticulously maintained, property. Walk up the gorgeous paver drive and walkway to the welcoming double entry door. The bright and sunny Foyer features gleaming hardwood floors and an open layout making the flow of this home perfect for your family. From the Foyer, flow easily into the sundrenched Living Room with gleaming hardwood floors, crown molding and gorgeous fireplace with quartz surround. Dinner parties are divine in the elegant formal Dining Room complete with hardwood floors, gorgeous moldings and easy access to the Kitchen. Sliding French doors overlooking the picturesque property beyond add an abundance of elegance and charm.



Storage abounds in the bright and airy European Chef's Kitchen with custom cabinetry, quartz countertops and top of the line stainless steel appliances. The island, with an abundance of seating, adds plenty of storage and counter space. The double French doors provide easy access to the exquisite outdoor deck and park-like property making this home perfect for year round entertaining. The open layout to the Family Room exudes relaxation, making movie night or game night a joy. A graceful Powder Room is conveniently located off of the Entry Foyer and rounds out the First Level.





Ready to retire for the evening? Wander up the elegant staircase to find the roomy second floor landing complete with dual Linen Closet with an abundance of room for hanging and storage. Prepare to relax in the private, roomy and sunlit Master Suite. The Walk-In Closet/Dressing Area with custom built-in cabinetry ensures that everything will be neatly tucked away. The spa-like Master Bathroom is perfection with luxurious stone floors, dual vanities with granite countertops, Jacuzzi soaking tub and spacious walk-in shower.

Bedrooms 2, 3 and 4 feature gorgeous architectural details, including vaulted ceilings, plenty of windows and generous closets for plenty of natural light and ample storage. Bedroom 2 is an incredible Junior Master Suite and features a spa-like ensuite bathroom complete with Jacuzzi tub, walk-in shower, and bidet. Bedrooms 3 and 4 share the abundant Full Hallway Bathroom. The open Office with beautifully vaulted ceilings and transom window round out the Second Level.

Expecting guests or hiring an au pair? The Lower Level features Bonus Room/Bedroom with plenty of closet storage perfect for a nanny suite or guest room. The Lower Level also features a Full Bathroom to make any guest happy!

And that's not all! The Lower Levels boasts a Recreation Area perfect for endless hours of family entertainment or arts and crafts. Whether it's watching your favorite sports team, playing board games, or simply hanging out with friends this space is the perfect setting for friends and family. Additionally, with dual walk-in closets, a Workshop Room and an additional unfinished storage area, nothing will ever be out of place. A Laundry Room featuring plenty of built-in cabinetry and countertops, ensures that laundry will be a breeze.

With its serene setting, spacious floor plan, proximity to New York City, easy access to Midtown Direct train service, exceptional school district and convenience to fantastic shopping and restaurants, 11 Fenton Drive is a unique buying opportunity and the perfect place to call home!



INSIDE & OUT

FIRST LEVEL

- Front Entry Foyer featuring hardwood floors, baseboard molding, crown molding, flush mount light fixture, recessed lighting, walk-in coat closet, Staircase to Second Level, Staircase to Lower Level
- Living Room featuring hardwood floors, baseboard molding, crown molding, wood burning fireplace with white quartz surround and mantle, recessed lighting, casement windows
- Dining Room featuring hardwood floors, baseboard molding, crown molding, designer pendant light fixture, recessed lighting, casement windows, sliding French doors to outdoor deck
- European Eat-In Chef's Kitchen featuring tile flooring, baseboard molding, crown molding, recessed lighting, custom cabinetry (some glass paneled), wine shelving, quartz countertops, glass tile backsplash, double sliding French doors to outdoor deck, double stainless steel sink with Gooseneck touchless (add brand) faucet, Electrolux stainless steel Refrigerator/Freezer, Dacor stainless steel cooktop, Miele stainless steel oven, Miele stainless steel dishwasher, Sharp stainless steel convection microwave, island with seating and storage, designer light fixtures, separate work station with storage, open layout to Breakfast Room and Family Room
- Breakfast Room featuring tile flooring, baseboard molding, crown molding, recessed lighting, designer light fixture, casement windows, open layout to Kitchen and Family Room
- Family Room featuring tile flooring, baseboard molding, crown molding, recessed lighting, casement windows, French door to front hallway, entry to back mudroom hallway
- Back Hallway Mudroom featuring tile flooring, baseboard molding, crown molding, recessed lighting, double door closets with organizational system, Door to side yard, Door to garage (plumbed for water line)
- Powder Room featuring tile flooring, baseboard molding, crown molding, recessed lighting, vessel sink with glass countertop, double hung window

SECOND LEVEL

- Staircase to Second Level featuring multi-story ceilings, baseboard moldings, crown moldings, recessed lighting
- Second Level Landing/Hallway featuring hardwood floors, baseboard moldings, crown molding, recessed lighting, dual linen closets, pull down stairs to attic, arched entry to Office
- Master Bedroom featuring carpet, baseboard molding, crown molding, recessed lighting, decorative tray ceiling, casement windows
- Walk-in Closet/Dressing Area featuring carpet, baseboard molding, crown molding, recessed lighting, flush mount light fixture, custom built-in cabinetry with hanging, shelving, drawers and mirror
- Master Bathroom featuring stone floors and surround, crown molding, recessed lighting, dual custom vanities with designer vessel sinks, storage and granite countertops, dual wall mirrors, step up Jacuzzi soaking tub with stone surround, casement windows, walk-in shower with stone floor, surround and built-in shelving, rain showerhead, separate toilet area featuring toilet and bidet
- Junior Master Suite/Bedroom #2 featuring carpet, baseboard molding, crown molding, vaulted ceiling, recessed lighting, dual sliding door closets featuring custom organizational system, casement windows, Full Bathroom featuring stone flooring, stone wainscoting with decorative glass tile border, crown molding, recessed lighting, double hung windows, Jacuzzi bathtub, separate shower with stone floor and surround, rain showerhead, toilet and bidet
- Bedroom #3 featuring carpet, baseboard molding, crown molding, recessed lighting, double door closet with organizational system, casement windows
- Bedroom #4 featuring carpet, baseboard molding, crown molding, recessed lighting, vaulted ceiling, dual double door closets with custom organizational system, casement windows
- Hallway Full Bathroom featuring tile flooring, tile and wood wainscoting, crown molding, recessed lighting, vanity with storage and vessel sink, designer sconce, shower with wood-look tile surround and built-in shelving, double hung window
- Open Office featuring hardwood floors, baseboard molding, crown molding, vaulted ceilings, recessed lighting, pendant light fixture, transom window, double door closet with organizational system

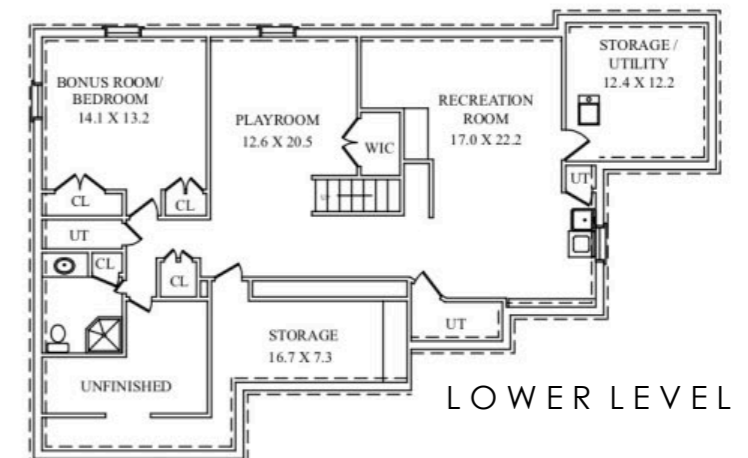
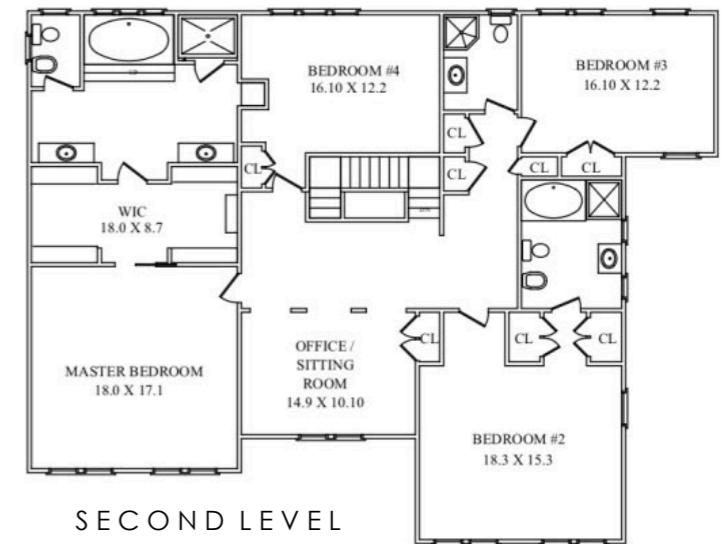
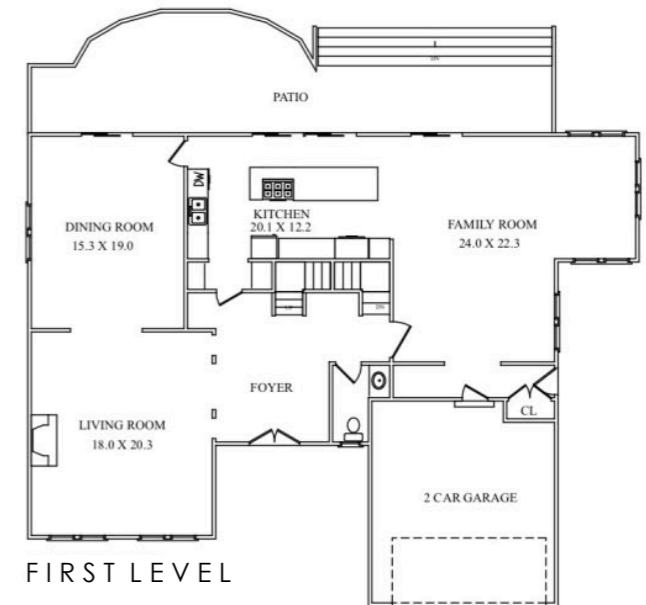
LOWER LEVEL

- Traditional Staircase with carpet to Lower Level
- Recreation Room featuring carpet, baseboard molding, recessed lighting, dual double door walk-in closets
- Laundry Room featuring baseboard molding, recessed lighting, Siemens front load dryer, built-in cabinetry (some glass paneled) with granite countertops, porcelain sink, closets, large unfinished storage area
- Workshop Room featuring rubber flooring, painted concrete walls, built in cabinetry with granite countertop, built in wall seat
- Bonus Room/Bedroom featuring carpet, baseboard molding, recessed lighting, dual double door closets with hanging and shelving, hopper windows
- Full Bathroom featuring tile flooring, tile wainscoting, recessed lighting, vanity with sink, mirror with lights, shower, linen closet
- Large unfinished storage area

ADDITIONAL FEATURES + UPGRADES

- Home completely renovated in 2005
- Alarm
- Irrigation
- 2 car garage with hanging and shelving for tools
- Sump pump
- Large, flat back yard with privacy landscaping
- Paver driveway and walkways
- Wood deck with grilling and seating area

THE FLOORPLAN



CELL: 973.936.9129
 OFFICE: 973.376.0033 x101
 info@sueadler.com
 sueadler.com/11fenton