

29 GREAT HILLS TERRACE | SHORT HILLS, NJ



sueadler 
THE #1 KELLER WILLIAMS TEAM IN NEW JERSEY team

kw PREMIER
PROPERTIES
KELLERWILLIAMS

Each Keller Williams office is individually owned and operated.



Look no further, you have found THE BEST value in Short Hills! Drive up to 29 Great Hills Terrace and prepare to fall in love with the charming picket fence, deep, lush property, clapboard siding and shutters - all contributing to this home's exceptional curb appeal. This pristine and stately 4 Bedroom, 3 ½ Bathroom home, just steps from Deerfield school, hits all the right notes!

Enter through the classic original wood door into the warm and welcoming Entry Foyer complete with hardwood floors, Coat Closet and an elegant staircase leading to the Second Level. The spacious and bright Living Room is an entertainer's dream with its exceptional statement fireplace with brick surround, custom millwork mantel and gorgeous bay window.



Flow easily into the stunning and airy Family Room with floor to ceiling French doors that provide an easy exit out to the fabulous Deck. Whether it's hanging with family, game night or movie watching, the Family Room is the perfect spot to decompress and entertain. Move into the Kitchen that is sure to satisfy any cook. Storage abounds in the bright and airy Kitchen with ample cabinetry, pantry closet, tons of counter space and a lovely window over the sink with incredible views of the park-like property. Dinner parties are divine in the expansive Formal Dining Room complete with a stunning chandelier, sunlit bay and French door opening up to the fantastic outdoor Deck. Easily accessed from either the Family Room or the Dining Room, relax on the fabulous Deck perfect for your next al fresco dinner party or simply spending time with friends. A tastefully renovated Powder Room rounds out the first level.

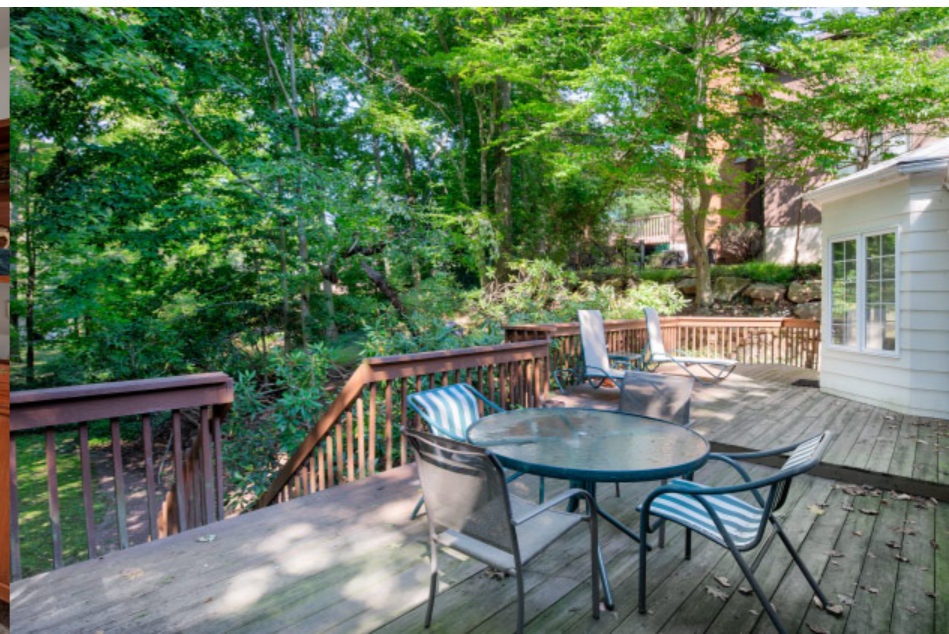


Ready to retire for the evening? Walk up the stairway to the roomy 2nd floor landing and prepare to enjoy immense privacy, hardwood floors, 2 roomy Closets and a tasteful bath in the serene Master Bedroom Suite. Cheerful and spacious Bedrooms 2 and 3 boast hardwood floors, 2 closets to each room and exquisite windows where light literally pours in. A luminous Full Hall Bathroom, with a large double vanity, rounds out the Second Level.

And that's not all! The Lower Level provides plenty of additional living space with a sizable, carpeted Recreation Room/Children's Playroom perfect for movie watching or arts and crafts. A large Storage/Laundry Room offers plenty of additional storage space. Off of the Recreation Room you'll find a Guest Bedroom and Full Bathroom perfect for use as a nanny suite, guest room or office.

Another jewel of 29 Great Hills is the scenic, deep park-like property featuring immense privacy, large specimen trees and plenty of room for play or roasting marshmallows at a fire pit.

With its prestigious neighborhood, close proximity to Midtown Direct train, Deerfield school and convenience to fantastic shopping and restaurants, 29 Great Hills is a fantastic value and cannot be missed!



INSIDE & OUT

THE FLOORPLAN

FIRST LEVEL

- Original decorative wood front door
- Entry Foyer featuring hardwood floors, wood staircase to Upper Level, Coat Closet, recessed lighting, baseboard molding, freshly painted
- Rear Foyer featuring hardwood floors, double door
- Pantry with floor to ceiling shelving, recessed lighting, freshly painted
- Living Room featuring hardwood floors, fireplace with custom millwork mantle and brick surround, bay window, baseboard molding, crown molding, freshly painted, custom shades
- Family Room featuring hardwood floors, ceiling fan/light fixture, French doors with floor to ceiling sidelite out to Deck, recessed lighting, baseboard molding, freshly painted
- Kitchen featuring tile flooring, laminate cabinetry with laminate countertops, electric cooktop, Kenmore refrigerator/freezer, Jenn-Air wall double ovens, Maytag dishwasher, recessed lighting, tiled soffit, picture window over sink overlooking Deck and backyard, freshly painted
- Dining Room featuring hardwood floors, designer chandelier, bay with casement windows and French doors out to Deck, recessed lighting, baseboard molding, freshly painted
- Powder Room featuring tile flooring, laminate vanity with laminate countertop, custom mirror, recessed lighting, baseboard molding
- Door to basement
- Door to Garage

SECOND LEVEL

- 2nd Floor Landing featuring hardwood floors, designer lantern light fixture, attic access
- Master Bedroom Suite featuring hardwood floors, arched ceiling, recessed lighting, baseboard molding, 2 oversized Closets, blinds, freshly painted, Master Bathroom featuring marble floor tile, wall tile, shower/tub combination with tile surround, pedestal sink, medicine cabinet, vanity lighting, heat lamp, fan, built in shelving niche
- Bedroom #2 featuring hardwood floors, 2 Closets, recessed lighting, shades, freshly painted
- Full Hall Bathroom featuring tile flooring, double vanity with laminate countertop, custom mirror, recessed lighting, shower/tub combination, fan
- Bedroom #3 featuring hardwood floors, arched ceiling with architectural window, 2 closets, recessed lighting, shades, freshly painted

LOWER LEVEL

- Carpeted staircase to Lower Level
- Recreation Room featuring carpeting, recessed lighting, freshly painted, 2 utility/storage closets
- Laundry Room featuring cement floor, original built in with glass door cabinetry, Kenmore washer and dryer
- Guest Room/Bedroom #4 featuring carpeting, baseboard molding, flush mount light fixture
- Full Bathroom featuring floor tile, tub/shower combination, Linen Closet, fan/light combination

FRONT & BACKYARD

- Deck
- Deep, 2-tiered Backyard with mature specimen trees and privacy
- Stone walls and bluestone paths
- 1 car garage

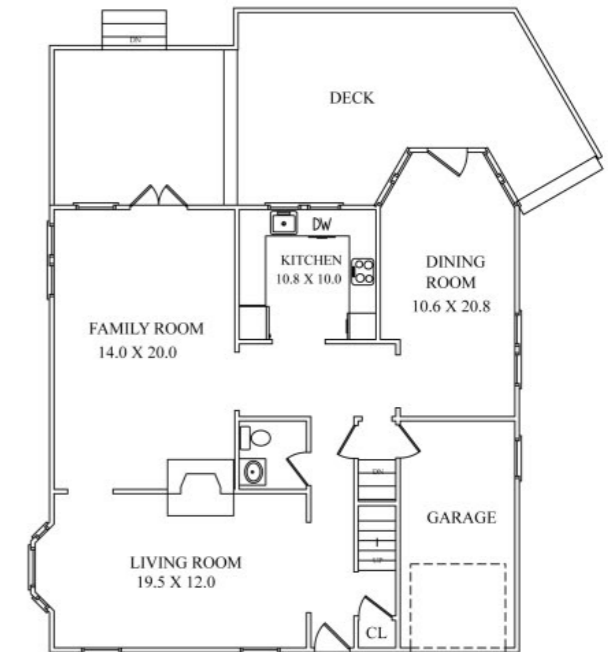
ADDITIONAL FEATURES & UPGRADES

- Freshly painted throughout
- New windows throughout

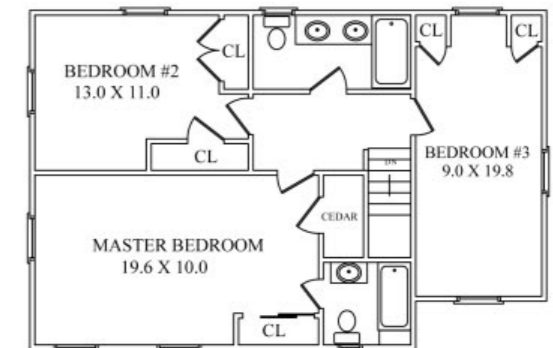


CELL: 973.936.9129
 OFFICE: 973.376.0033 x101
 EMAIL: info@sueadler.com
 sueadler.com/29greathills

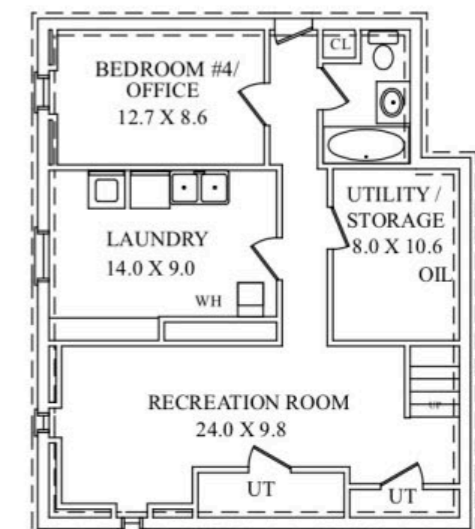
All information deemed reliable but not guaranteed



FIRST LEVEL



SECOND LEVEL



LOWER LEVEL