



40 ASHWOOD AVENUE | SUMMIT



Welcome to 40 Ashwood Avenue! This meticulously maintained 3 Bedroom, 1.5 Bath farmhouse style home exudes chic vintage charm in Summit's Jefferson Elementary School District, just steps from all downtown Summit has to offer.

Walk up and admire the beautiful windows adorned by quaint white shutters. Step up the front steps into the fabulous enclosed front porch perfect for summer evenings and rocking chairs. Enter into the Entry Foyer and you know you have arrived somewhere special. Flow easily into the Living Room and admire the classic entry moldings and soaring ceilings. Hardwood floors, oversized windows and crisp neutral walls make this room the perfect spot to entertain friends or simply to cozy up with a book. Get ready to host family gatherings and dinner parties in the adjoining Dining Room featuring hardwood floors, chandelier and window looking out on lush greenery. Off the Dining Room, you'll find a spacious Den with beautiful views of the Kitchen beyond.





Move into the updated Kitchen where you are sure to be impressed. The Kitchen is ideal with crisp white cabinetry, granite countertops, stainless backsplash and stainless steel appliances. A conveniently located door makes indoor/outdoor entertaining seamless and summer barbeques a breeze. A tasteful Powder Room with charming bead board vanity rounds out the First Level. Walk down a few steps to find the Lower Level with plenty of storage space and a spacious Laundry Area. When it's time to retire for the evening, walk upstairs to find 3 spacious Bedrooms steeped in sunlight and with plenty of closet space. A spacious updated Hallway Full Bath is the perfect complement to this level.

The real show stopper of 40 Ashwood is the deep, level enclosed yard featuring immense privacy, a children's play set and tons of room for entertaining. Whether it's al fresco dining or roasting marshmallows, the backyard has plenty of room for any entertaining pursuit.

40 Ashwood Avenue is the perfect starter home in one of New Jersey's most sought-after towns. With easy access to restaurants and shopping, proximity to Jefferson Elementary and Midtown Direct train, this home is a must see and won't last at this price!



INSIDE & OUT



FIRST LEVEL

- Enclosed Front Porch/Mudroom Area featuring wood flooring, windows/screens at 3 exposures, vaulted ceiling, flush mount light fixture, paneled wainscoting
- Entry Foyer featuring original wood door, new hardwood floors, high ceilings, flush mount light fixture, staircase with original railings to 2nd Level, baseboard molding, hooks for jacket storage, original decorative radiator
- Living Room featuring new hardwood floors, elongated new windows at 2 exposures, high ceilings, ceiling fan/light fixture, baseboard molding, crown molding, original millwork at openings, curtains, window shades, original decorative radiator
- Dining Room featuring new hardwood floors, elongated new windows at 2 exposures, high ceilings, modern designer light fixture, baseboard molding, crown molding, original millwork at openings, curtains, window shades, original decorative radiator
- Powder Room featuring tile flooring, vanity with bead board detail and storage, acrylic countertop, custom radiator cover, flush mount light fixture, baseboard molding, window shade
- Den featuring elongated new windows, high ceiling, ceiling fan/light fixture, baseboard molding, crown molding, original millwork at openings, curtains, window shades, custom radiator cover, door to Lower Level
- Chef's Kitchen featuring wood cabinetry, granite countertops, stainless sink with commercial style fixture, granite and stainless backsplash, stainless Whirlpool refrigerator/freezer, stainless gas six burner oven/range, stainless Frigidaire dishwasher, Breakfast Bar with seating for 2, new windows at 3 exposures, flush mount light fixture, baseboard molding, crown molding, arched entryway, curtains, window shades, door to side yard

SECOND LEVEL

- Carpeted staircase to Second Level, new floors at 2nd floor landing, sconce, drop down attic access
- Master Bedroom featuring elongated new windows at 2 exposures, high ceilings, ceiling fan/light fixture, baseboard molding, double door Closet, original millwork at openings, curtains, window shades, original radiator
- Bedroom 2 featuring elongated new windows at 2 exposures, high ceilings, ceiling fan/light fixture, baseboard molding, double door Closet, original millwork at openings, curtains, window shades, original decorative radiator
- Bedroom 3 featuring elongated new windows at 2 exposures, high ceilings, ceiling fan/light fixture, baseboard molding, Closet, original millwork at openings, window shades, radiator cover
- Full Hall Bath featuring tile flooring, shower/bath, vanity with storage, elongated window

LOWER LEVEL

- Unfinished Lower Level featuring epoxy flooring, Laundry Area, Utilities, Storage

BACKYARD

- Children's Playset
- Private fully fenced in flat, deep yard
- Entertaining area
- Storage Shed

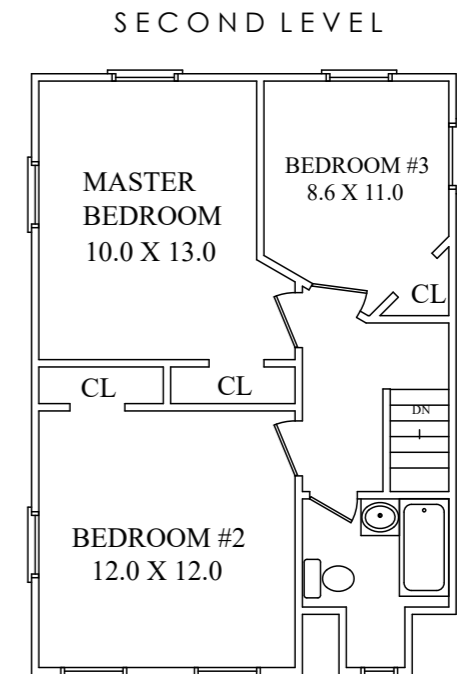
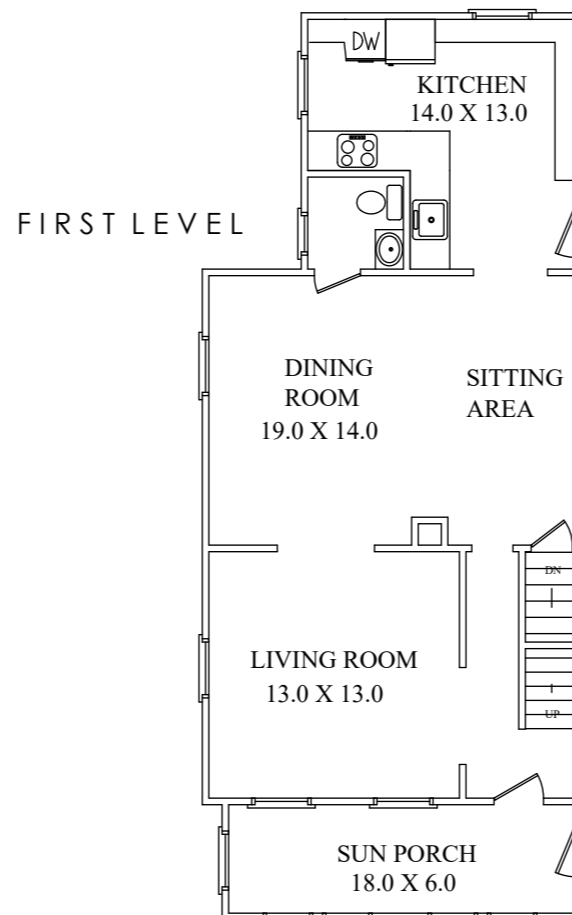
ADDITIONAL FEATURES & UPGRADES

- Alarm System
- Kitchen renovated 2014
- Newer roof (2015)
- Newer floors and windows
- New hot water heater (2016)
- French drains (2015)



CELL: 973.936.9129
OFFICE: 973.376.0033 x101
EMAIL: info@sueadler.com
sueadler.com/40ashwood

THE FLOORPLAN



All information deemed reliable but not guaranteed