

kw PREMIER
PROPERTIES

KELLER WILLIAMS

Each Keller Williams office is individually owned and operated.

PRESENTED BY

sueadler 
THE #1 KELLER WILLIAMS TEAM IN NEW JERSEY **Team**

10 Ramapo Trail
Chatham, New Jersey



Welcome to 10 Ramapo Trail! Beautifully situated on a park-like .46-acre lot in Chatham's prestigious Highlands neighborhood, this beautiful 4 Bedroom, 3.1 Bath Custom home includes spacious rooms, a flexible floor plan and plenty of space for entertaining. This home has been impeccably maintained by its current owners for 33 years and it shows! This is also an incredible, tight-knit neighborhood great for block parties, happy hours, and traffic-free play in the nearby cul de sac. Simply put, this home checks each and every box.



Entering the sought after Highlands neighborhood, 10 Ramapo Trail awaits. The charming cedar shingle exterior and facade is reminiscent of a Nantucket retreat. The grounds and entry have been thoughtfully designed with mature specimen plantings surrounded by a warm and welcoming custom paver walkway leading to a covered front entry with a sleek metal roof. Opening the Craftsman solid mahogany front door, one becomes transfixed by all this house has to offer. Step inside the spacious, sunlit Foyer and soak in the gleaming hardwood floors and beautiful craftsmanship that was thoughtfully planned by renowned local architect Brian Siegel. Move into the sun-drenched Living Room gracefully adorned with a beautiful picture window and a traditional statement fireplace. Dinner parties are divine in the nearby formal Dining Room with gorgeous vistas of the lush backyard.







Flow from the Dining Room into the Chef's Kitchen perfect for creating gourmet meals. Crisp white cabinetry, granite countertops, stainless appliances, killer backyard views and easy access to the outdoors make the kitchen both lovely and functional. Outdoor entertaining is effortless in the outdoor entertaining area that flows easily from the Kitchen. The exquisite, custom outdoor Deck, outfitted with drink rails and cascading down to an Entertaining and Grilling Patio, is perfect for fire pits, an al fresco dinner party or simply hanging out with friends. Just beyond the patio, enjoy complete privacy in the lovingly maintained, park-like level yard with mature specimen trees and meticulously planted blooming perennials.



Back inside, take the stairs down to the serene Family Room perfect for game night and movie watching. A charming Half Bath, Laundry Room, a 2 Car Garage (with tons of storage and Mud Room Area/separate entrance) and a lower Storage Room (easily converted to an Exercise Room and/or Wine Room) complete the lower level.

When it's time to retire for the evening, the lovely staircase with a designer runner leads you to the second floor. On this level, you will find 3 generously sized bedrooms, all with neutral paint and plenty of natural light. Ensuite Bedroom 2 is spacious and well-designed with a dazzling Full Bath with a sleek vanity and crisp white subway tile. Bedrooms 3 and 4 share the astounding Hall Full Bath featuring a stunning vanity with quartz countertop, subway tile, and decorative floor tile.

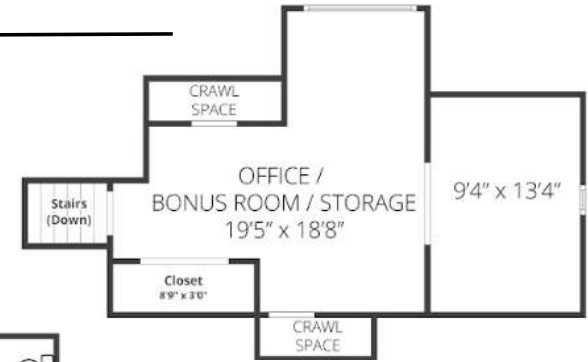


Just a few steps away, prepare to be WOWED by the Third Level Primary Bedroom Suite—your own uber-private and spacious oasis. This impressive suite, bathed in sunlight, exudes absolute serenity with its vaulted ceiling, Sitting Area, fully custom Walk In Cedar Closet and spa-like Bath. Need to work from home? No problem when you have your own private Home Office just up a few steps from the Primary Bedroom. This private and quiet space feels like you are floating in nature with stunning views outdoors. Tons of storage rounds out this level.

With an exceptional neighborhood, easy access to Midtown Direct train service, an extraordinary school district and convenience to fantastic shopping and restaurants, be the lucky new owner to call 10 Ramapo Trail home!



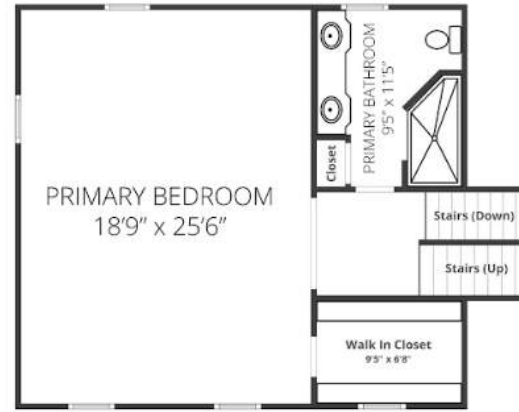
THE FLOORPLAN



FOURTH LEVEL



SECOND LEVEL



THIRD LEVEL



GROUND LEVEL



FIRST LEVEL



LOWER LEVEL

NOT TO SCALE - This floor plan is provided for illustration purposes only.
Room positions and dimensions are approximate and should be independently measured for accuracy

- INSIDE & OUT -

FIRST LEVEL

- Entry Foyer featuring mahogany door with sidelites, hardwood floors, flush mount light fixture, crown molding, baseboard molding, Coat Closet adjacent to entry and pantry closet adjacent to kitchen, staircases to Ground and Second Levels
- Living Room featuring graceful archway at entry, hardwood floors, wood-burning fireplace featuring custom millwork mantle with dentil detail and stone surround, large picture window, furniture style built-ins with library lights, crown molding, baseboard molding
- Dining Room featuring hardwood floors, chair rail, windows at 2 exposures including large picture window overlooking expansive deck and fenced-in backyard, chandelier, crown molding, baseboard molding, double doors to Kitchen
- Chef's Kitchen featuring tile flooring, crisp white custom cabinetry, granite countertops, tile backsplash, large picture window, recessed lighting, baseboard molding, French door to backyard, GE stainless dishwasher, GE stainless oven/range, GE built in stainless microwave, KitchenAid stainless refrigerator/freezer with water/ice dispenser.

GROUND LEVEL

- Family Room featuring carpeting, door to Lower Level staircase, staircase to First Level, recessed lighting, baseboard molding, Closet
- Half Bath featuring tile flooring, beadboard wainscoting, window, vanity with integrated sink/top, tilt mirror, sconces
- Laundry Room featuring tile flooring, washer, dryer, open shelving, counter for folding
- 2 Car Garage, freshly painted, new doors, new openers, incredible storage with shelving
- Separate entrance with Mud Room Area in Garage

LOWER LEVEL

- Unfinished/Storage (potential for Exercise Room, Wine Cellar)

SECOND LEVEL

- Staircase with designer runner
- Second Level Landing featuring hardwood floors, Linen Closet, baseboard molding, flush mount light
- Ensuite Bedroom 2 featuring hardwood floors, windows at 2 exposures, baseboard molding, large Closet, Full Bath featuring tile flooring, subway wall tile, modern vanity with quartz countertop, glass door shower with rain showerhead, recessed light, sconce, open shelving, window
- Bedroom 3 featuring hardwood floors, windows at 2 exposures, baseboard molding, Closet
- Bedroom 4 featuring hardwood floors, window, baseboard molding, Closet
- Full Hall Bath featuring tile flooring, custom vanity with quartz countertop, tile backsplash, subway tile wainscoting, tub/shower combination, window, recessed lighting, sconces

THIRD LEVEL

- Staircase with designer runner
- Primary Bedroom Suite featuring hardwood floors, vaulted ceiling, Sitting Area, 2 ceiling fans/lights, windows at 3 exposures, Walk In Cedar Closet with custom storage
- Primary Bath featuring French door at entry, tile flooring, large custom double vanity with granite countertop, vaulted ceiling with skylight, frameless glass shower with tile surround, multiple shower heads, recessed lighting, sconces, double-door Linen Closet

- INSIDE & OUT -

FOURTH LEVEL

- Office/Bonus Room featuring locking French door at entry, berber carpeting, recessed lighting, large double-door Closet
- Storage Room
- Eave storage
- Western-facing view over wildlife refuge

FRONT/BACKYARD

- Spacious corner lot
- Paver front walkways, front landing area with knee wall and seating
- Covered front entry portico
- Professionally landscaped, fenced-in backyard with mature specimen trees, foundation plantings and blooming perennials
- Custom Rear Deck
- Lower Paver Patio
- In-ground sprinkler and drip line system

ADDITIONAL FEATURES/UPGRADES

- Exterior and interior architectural changes by premier local architect Brian Siegel
- Freshly painted throughout
- Freshly updated kitchen and recently renovated two full bathrooms
- Replaced exterior with custom Maibec cedar shingles and added high quality natural stone
- Replaced flat driveway, garage doors and garage flooring
- Added TimberTech Deck and tiled Patio, direct natural gas line to Weber grill
- Multiple sump pumps with battery backup, French drains
- New HVAC in 2021
- New roof in 2015
- Andersen windows throughout
- All systems meticulously maintained by owner

Cell: 973.936.9129

Office: 973.376.0033 ext.101

E-mail: info@sueadler.com

sueadler.com/10Ramapo



kw PREMIER
PROPERTIES
KELLERWILLIAMS

Each Keller Williams office is individually owned and operated.



Amy Deuchler
Listing Specialist

PRESENTED BY
sueadler 
THE #1 KELLER WILLIAMS TEAM IN NEW JERSEY **team**