

14 UNION WAY
SHORT HILLS, NJ 07078

Cell: (973) 936-9129
Office: (973) 376-0033 x101
admin@sueadler.com
www.sueadler.com/14Union



Sue Adler
KELLER WILLIAMS
PREMIER PROPERTIES

sueadler 
THE #1 KELLER WILLIAMS TEAM IN NEW JERSEY **team**

Each Keller Williams office is individually owned and operated.





Welcome to 14 Union Way – a high design entertainer’s dream! This 5 bedroom, 5½ bath Custom Colonial is a vision of architectural and design perfection in every detail and is ready for you to move in!

Drive down a beautiful tree-lined private road to this Custom Colonial home with stone paver walkway and bluestone front porch. Enter through the dark mahogany Entry Door graced with glass panels and sidelights. The intricate moldings, dark hardwood floors and designer light fixtures are just a few of the magnificent details that grab your attention. The Entry Foyer has a contemporary feel with an abundance of natural light with a Walk-In Coat Closet and views of the Living Room, Dining Room and Office. The gracious Living Room features amazing architectural detail such as a two-sided fireplace with floor to ceiling custom millwork flanked by French doors leading to the Family Room. The Family Room is an entertainer’s dream with its stately fireplace, oversized windows and wall of French doors leading to the outdoor patio to make indoor and outdoor entertaining seamless. The Family Room opens to the Gourmet Chef’s Kitchen, which will delight even the most sophisticated culinary artist. Crisp white custom wood cabinetry, black and white quartz countertops, gorgeous custom island with seating for 4, top of the line stainless steel appliances, including a steam and convection oven, all lend to the Kitchen’s extraordinary style. The Walk-In Food Pantry ensures that everything is at your fingertips and the Breakfast Alcove with oversized bowed windows provides gorgeous views of the park-like setting making your morning coffee a treat. Flow through the warm Butler’s Pantry featuring custom cabinetry to the Dining Room where architectural details abound. The gorgeous grass cloth and designer light fixtures will be where your family and friends love to gather and dine. The Office featuring an abundance of light, wainscoting and custom cabinetry will make work seem like more play. The Powder Room with marble countertops and wallpapered ceiling round out this level.







When you're ready to retire for the evening, the grand staircase, beaming with natural light, leads you to the second level with 4 spacious bedrooms and 3 full baths. The immensely private and spacious Master Bedroom Suite exudes comfort and style with cathedral ceilings, architectural moldings and oversized bowed windows for an abundance of natural light. The Master Suite is also functionally designed with an enormous Walk-In Closet/Dressing Area with custom white cabinetry with adjustable hanging, shelving and drawers. You won't want to leave the spa-like Master Bathroom complete with marble floors and countertops, soaking tub and steam shower. Down the hall, two large bedrooms are a designer's dream, steeped in sunlight and include generous double door walk-in closets and a Juliette balcony. A stunning Jack and Jill bathroom featuring penny tile, subway tile wainscoting and an adorable window seat will make bath time easy. An additional ensuite Bedroom on this level features hardwood floors and a walk-in closet with a Bathroom featuring marble floors, countertops and subway tile wainscoting. Laundry is a snap in the Second Level Laundry Room with custom white cabinetry, black quartz countertops and huge storage closet.



Expecting guests or hiring an au pair? The Third Level features a gigantic Bedroom/Bonus Room with beautiful arched ceilings and plenty of closet storage perfect for a nanny suite or guest room. The Third Level also features a huge walk-in closet with custom cabinetry with hanging, shelving and drawers for storing out-of-season clothing for the entire family! There's also a Full Bath to make any guest happy. This spacious Third Level adds tons of living space and functionality to the home.

And that's not all! The Lower Level boasts an above ground Recreation Room perfect for endless hours of family entertainment, arts and crafts or exercise and spacious enough for multiple uses. There are gorgeous architectural details and closets galore to ensure that nothing will be out of place. Whether it's watching your favorite sports team, playing board games, or simply hanging out with friends you'll never want to leave this beautiful space. Additionally, the Lower Level boasts a Full Bathroom and large Mudroom with slate flooring, an abundance of storage and French doors to the outdoor patio. And there's more! The stunning private backyard with enormous maintenance free Azek deck, built-in stone fire pit area and play area with play set is the perfect place for parties, al fresco dining, or spending time with family and friends. This home is minutes away from transportation to New York City, fantastic shopping and restaurants and Blue Ribbon schools. This designer home won't last long!



INSIDE AND OUT...

First Level

- Outside Entry featuring bluestone landing mahogany wood with glass paneled front door with sidelites
- Entry Foyer/Front Hallway featuring dark hardwood floors, baseboard molding, crown molding, recessed lighting, walk-in coat closet
- Staircase with wood railings to Second Level, separate staircase with wood railings to Lower Level, pendant light with drum shade, entry to Kitchen and Family Room
- Powder Room featuring hardwood floors, wainscoting, crown molding, recessed lighting, marble top vanity with storage, 2 designer sconces, wallpapered ceiling
- Living Room featuring hardwood floors, baseboard molding, crown molding, recessed lighting, two-sided fireplace with stone surround, stone base with floor to ceiling custom wood millwork flanked by French doors to Family Room, 3 double hung windows
- Gourmet Chef's Kitchen featuring hardwood floors, custom white cabinetry, white quartz and black quartz countertops, subway tile backsplash, recessed lighting, island with seating for 4 with storage, pendant lighting over island, oversized stainless steel sink with commercial style faucet, oversized stainless steel side-by-side Sub Zero Refrigerator/Freezer, Thermador Professional stainless steel oven range, Thermador Professional stainless steel dishwasher, Thermador Professional stainless steel built-in microwave, Thermador Professional stainless steel steam and convection oven, Thermador Professional stainless steel food warmer, walk-in food storage pantry, pocket door to Butler's pantry, open floor plan to Family Room
- Breakfast Area featuring hardwood floors, baseboard molding, crown molding, recessed lighting, pendant lighting, double hung bowed windows, glass paneled door to outdoor deck
- Butler's Pantry featuring hardwood floors, baseboard molding, crown molding, white custom cabinetry with glass door fronts, black quartz countertops, subway tile backsplash, stainless steel bar sink with faucet, Marvel wine refrigerator, walk in closet with floor to

ceiling shelving, pocket door to Dining Room and Front Hallway, Back Staircase to Lower Level

- Family Room featuring hardwood floors, baseboard molding, crown molding, recessed lighting, two sided fireplace with stone surround, stone base with floor to ceiling custom wood millwork flanked by French doors to Living Room, 2 double hung windows, French doors to outdoor deck, open floor plan to Kitchen
- Dining Room featuring hardwood floors, baseboard molding, crown molding, recessed lighting, 2 pendant light fixtures with drum shades, dark khaki grass cloth, entrance to Front Hallway, pocket door to Butler's Pantry, 4 double hung windows
- Office featuring hardwood floors, wainscoting, crown molding, recessed lighting, custom white built-in cabinetry with storage, window seat with storage, 3 double hung windows, French door to Front Hallway

Second Level

- Staircase to Second Level featuring hardwood floors, baseboard molding, crown molding, recessed lighting, double hung window, large pendant light fixture
- Second Level Upper Foyer featuring hardwood floors, baseboard molding, crown molding, recessed lighting, entry to bedrooms
- Master Bedroom featuring hardwood floors, baseboard molding, crown molding, Cathedral ceilings, recessed lighting, chandelier, 5 bowed double hung windows, Dressing Area/Walk-In Closet with custom white cabinetry with custom adjustable shelving, hanging and drawers, hardwood floors, baseboard molding, crown molding, recessed lighting, double hung window
- Master Bathroom featuring marble floors, double vanities with marble countertops and custom cabinetry with storage, 2 sconce lights with drum shades, flush mount light fixture with crystal detail, marble baseboard molding, arched ceilings, recessed lighting, soaking tub, Steam shower with rain head and hand held shower, marble tile throughout, shower seat, frameless glass door, recessed light in shower,

two double hung windows, linen closet, toilet room with pocket door, marble floor, marble baseboards

- Ensuite Bedroom #2 featuring hardwood floors, baseboard molding, crown molding, recessed lighting, 4 double hung, walk-in closet, French doors to Juliette balcony
- Ensuite Bathroom #2 featuring marble floors, subway tile wainscoting, vanity with storage and marble countertop, recessed lighting, 2 light sconces with shades, shower over tub with subway tile surround
- Bedroom #3 featuring hardwood floors, baseboard molding, crown molding, recessed lighting, 2 double hung windows, recessed lighting, double door walk-in closet, French doors to Juliette balcony and shared access with Bedroom #4 to Jack and Jill Bathroom
- Jack and Jill Bathroom featuring Penny tile flooring with antique finish, subway tile wainscoting, double vanities with storage and white quartz countertops, window seat with storage, 2 light sconces, linen closet, shower over tub with subway tile surround, double hung window
- Bedroom #4 featuring hardwood floors, baseboard molding, crown molding, recessed lighting, 2 double hung windows, 2 designer glass sconces, double door walk-in closet and shared access with Bedroom #3 to Jack and Jill Bathroom
- Laundry Room featuring tile floors, baseboard molding, crown molding, recessed lighting, custom white cabinetry with black quartz countertop and utility sink, LG front load washer, LG front load dryer, double hung window, closet
- Back Staircase with wood railing to Third Level featuring hardwood floors, landing with oversized double hung window, additional stairs to Third Level



INSIDE AND OUT...

Third Level

- Third Level Landing featuring hardwood floors, baseboard molding, crown molding, storage closet, doorway to Bedroom #5 area
- Bedroom #5 featuring hardwood floors, baseboard molding, vaulted ceilings, recessed lighting, double hung window, walk-in closet for off-season storage featuring hardwood floors, recessed lighting, custom cabinetry with hanging, shelving and drawer space, vaulted ceiling, separate door to unfinished attic space
- Ensuite Bathroom featuring octagonal tile flooring, pedestal sink, recessed lighting, 2 light sconces, shower over tub with subway tile surround, linen closet, double hung window

Lower Level

- Staircase with wood railing to Lower Level with hardwood floors, custom wood decorative mantle, double hung window
- Recreation Room featuring carpeting, baseboard molding, recessed lighting, double door closet with hanging and shelving, utility closet, French doors to Mudroom
- Mudroom featuring slate floors, baseboard molding, recessed lighting, window seats under 2 bowed double hung windows, door to 3-car garage, double door coat closet, additional closet, entry to Bathroom, Back Staircase with wood railing to Butler's Pantry/Kitchen
- Hall Bathroom featuring stone floors, baseboard molding, recessed lighting, pedestal sink, shower with subway tile surround, stone floor with marble step, chair rail/wood ledge, window, built-in medicine cabinet/linen closet

Backyard

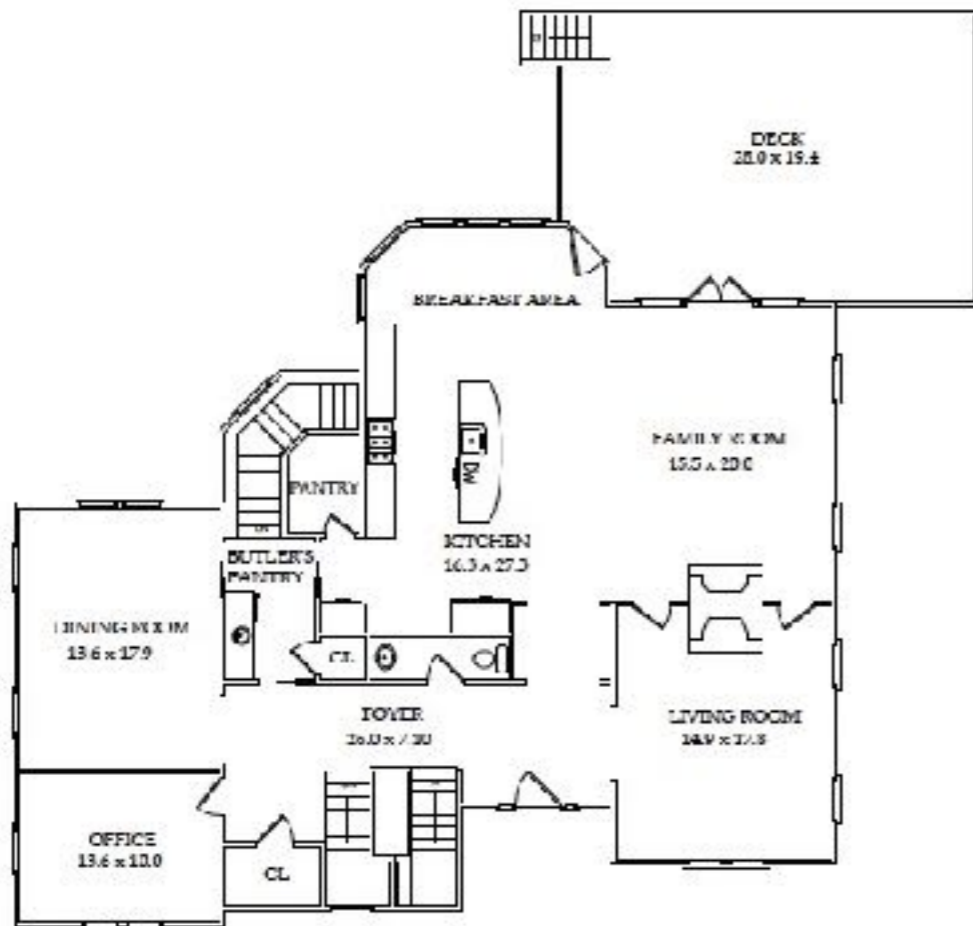
- Outdoor patio featuring stone pavers, built-in stone fire pit with seating area, play area with gravel and play set
- Covered outdoor area featuring stone pavers
- Private backyard with mature trees for added privacy
- Large outdoor deck featuring Azek waterproof decking with area for grilling and sitting, wood look railing overlooking yard, French doors to Family Room and Kitchen

Additional Features/Upgrades

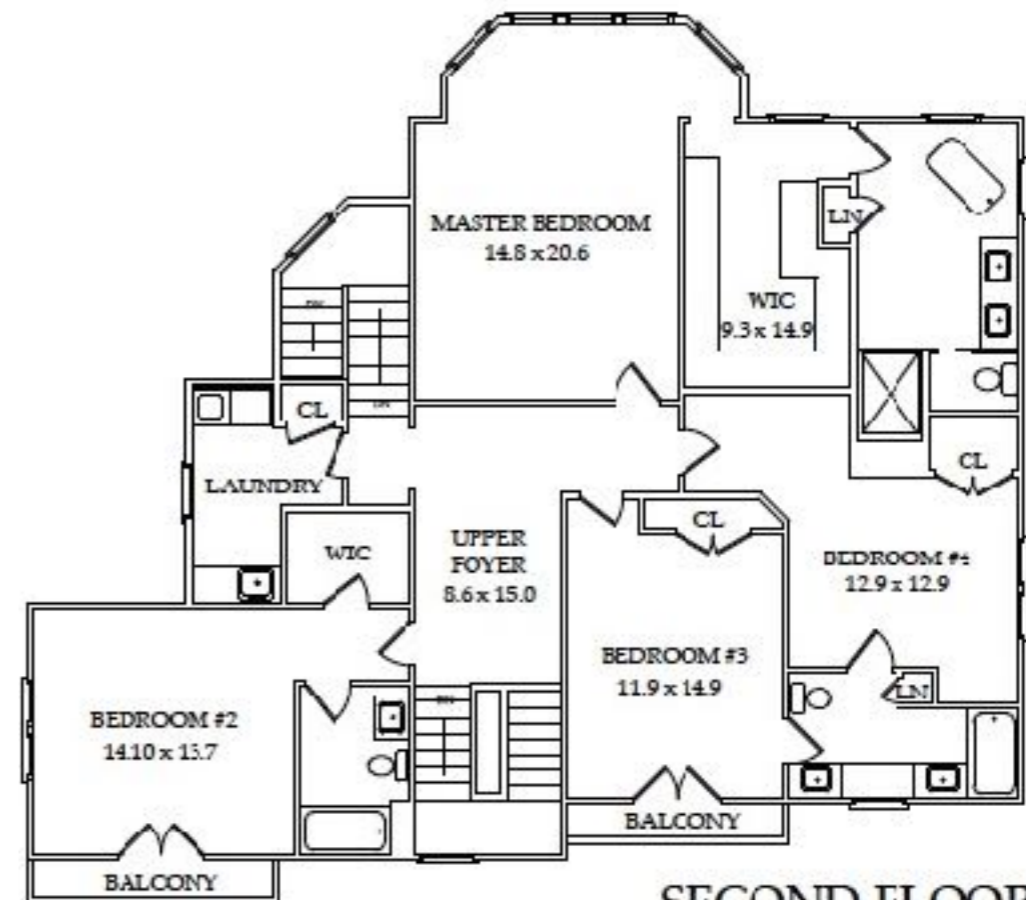
- Heated and electrified attached 3 car garage with shelving and storage
- Built in 2009 (When built, option of a 6th Bedroom in Lower Level was given and plumbed for Bathroom)
- Whole house generator
- 5 zone heating and A/C



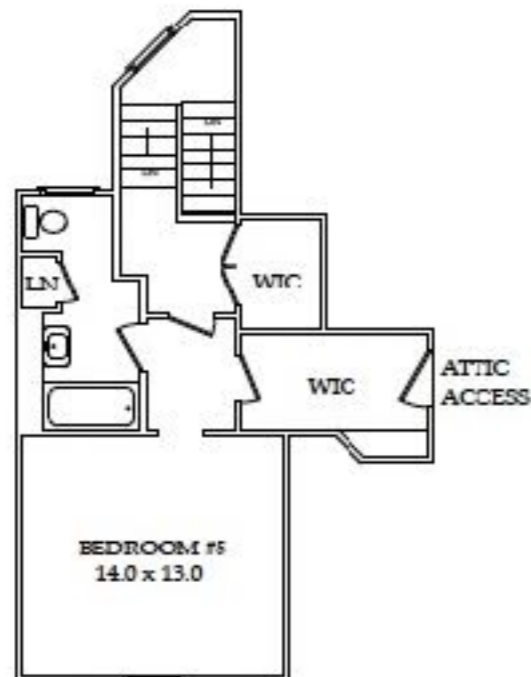




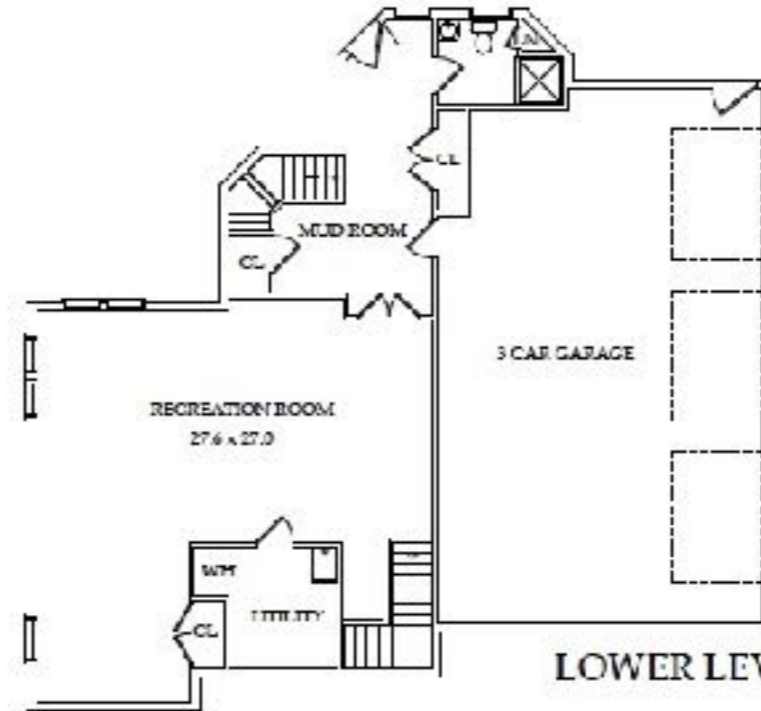
FIRST FLOOR



SECOND FLOOR



THIRD FLOOR



LOWER LEVEL

NOT TO SCALE - This floor plan is provided for illustration purposes only. Room positions and dimensions are approximate and should be independently measured for accuracy

