

28 STONERIDGE ROAD | NEW PROVIDENCE, NJ



kw PREMIER
PROPERTIES
KELLERWILLIAMS

Each Keller Williams office is individually owned and operated.

sueadler 
THE #1 KELLER WILLIAMS TEAM IN NEW JERSEY **team**



Welcome to 28 Stoneridge Road in sought after Tall Oaks! Move right in to this newly renovated 4 Bedroom, 2 and 1/2 Bathroom split level, located on .70 acre of sprawling property. With an exceptional location, a short distance from downtown Summit restaurants and shopping, Direct Train to NYC and top-rated schools, this house cannot be missed!

Drive up the tree-lined street where curb appeal abounds with a delightful bluestone walkway and meticulously maintained front yard. Enter through the welcoming front door into the Entry Foyer with an abundance of natural light and a convenient coat closet. The open layout allows easy flow into the sun-drenched Living Room/Family Room with oversized windows and a beautiful fireplace with stone surround perfect for relaxing evenings by the fire. Elegant dinner parties await in the spacious Dining Room featuring gleaming hardwood floors, and easy access to the Eat-In Kitchen making it perfect for entertaining. The newly renovated Gourmet Chef's Kitchen with granite countertops and tile backsplash is perfect for cooking nightly dinners or gourmet meals for friends. The spacious and bright Sun Room is an entertainer's dream with windows on 3 exposures and easy access to the park-like outdoors.

Ready to retire for the evening? Walk up the staircase to the elegant Second Level and wander into the well-appointed Master Bedroom featuring plenty of natural light, 2 generous walk-in closets and a spa-like Ensuite Master Bathroom. Two additional Bedrooms feature gleaming hardwood floors, an abundance of light and generous closets. A spacious Full Bathroom, newly renovated, serves the 2 bedrooms.





Expecting guests or hiring an au pair? The Lower Level features Bedroom 4/ Bonus Room with plenty of closet storage perfect for a guest room or Office. The Lower Level also features a huge Walk-In Cedar Closet with hanging and shelving for storing out-of-season clothing for the entire family! There's also a Powder Room and Laundry Area to make any guest happy. This spacious Lower Level adds tons of living space and functionality to the home.

And that's not all! The Lower Level also boasts an above ground Recreation/ Children's Playroom/Exercise Room making it perfect for endless hours of family entertainment, arts and crafts or exercise. There are closets galore to ensure that nothing will be out of place. Whether it's watching your favorite sports team, playing board games, or simply hanging out with friends you'll never want to leave this beautiful space. Additionally, the Lower Level boasts oversized sliding glass doors to the outdoor bluestone patio and stunning private backyard with spectacular circular bluestone patio with plenty of space for parties, al fresco dining, or spending time with family and friends.

Don't miss this great opportunity to own a home in one of New Providence's best neighborhoods. Minutes from shopping and restaurants, top-notch schools and NYC transportation, 28 Stoneridge Road is an absolute must see and simply won't last!

INSIDE & OUT

FIRST LEVEL

- Entry Glass Door featuring dark hardwood floors, pendant light fixture, double door coat closet
- Entry Foyer featuring tile flooring and dark hardwood floors, baseboard molding, pendant light fixture, double door coat closet, wood stairs to Living Room, traditional wood staircase to Second Level
- Living/Family Room Combination featuring baseboard molding, large picture window flanked by casement windows, fireplace with stone surround, freshly painted neutral white
- Dining Room featuring hardwood floors, baseboard molding, recessed lighting, large picture window flanked by casement windows, freshly painted neutral white
- Sunroom featuring tile flooring, exposed brick wall, oversized windows on 3 exposures, door to outdoor bluestone patio
- Gourmet Chef's Kitchen featuring tile flooring, baseboard molding, recessed lighting, bowed window, custom white cabinetry, granite countertops, tile backsplash, stainless steel sink with commercial faucet, Insinkerator garbage disposal, Subzero refrigerator/freezer, GE stainless steel dishwasher, GE stainless steel cooktop, Sharp built-in stainless steel microwave drawer, door to outside bluestone patio, door to Lower Level staircase

SECOND LEVEL

- Hallway Landing featuring hardwood floors, baseboard molding,
- Ensuite Master Bedroom featuring hardwood floors, baseboard molding, freshly painted neutral white, double hung windows on two exposures, dual walk-in closets
- Ensuite Master Bathroom featuring wood-look wide plank flooring, pedestal sink, medicine cabinet with 4 light sconce, shower with stone tile surround and frameless glass doors, built-in shower shelving, flush mount light fixture, double hung window, Kohler toilet
- Bedroom #2 featuring hardwood floors, baseboard molding, freshly painted neutral white, 3 double hung windows, double door closet
- Bedroom #3 featuring hardwood floors, baseboard molding, freshly painted neutral white, 2 double hung windows, double door closet
- Renovated Full Hallway Bathroom featuring wood-look wide plank flooring, baseboard molding, recessed lighting, custom built-in double vanity with granite countertops, wall mirror with recessed lighting, bathtub with stone surround with decorative inlay, shower niche with built-in stone shelving and frameless glass door, decorative oversized picture window, linen closet with floor to ceiling shelving, Kohler toilet

GROUND LEVEL

- Traditional Wood Staircase to Lower Level
- Fully finished Family Room featuring carpet, baseboard molding, flush mount light fixtures, built-in custom

cabinetry with granite-look countertop, freshly painted neutral white, oversized double sliding glass doors to outdoor bluestone patio, access to garage

- Powder Room/Laundry Area featuring wood-look wide plank flooring, baseboard molding, pedestal sink, medicine cabinet with 4 light sconce, double door linen closet, separate Laundry Area featuring LG front load washer, LG front load dryer, flush mount light fixture, picture window, double door closet

LOWER LEVEL

- Bonus Room/Office featuring tile flooring, baseboard molding, flush mount light fixtures, freshly painted neutral white, painted brick on one exposure, picture window
- Walk-in oversized Cedar Closet with hanging and shelving
- Office featuring tile flooring, baseboard molding, flush mount light fixture, freshly painted neutral white, custom built-in bookcases and cabinetry on one wall, white wide plank paneling with ledge on one wall, picture windows, unfinished closet
- Recreation Room featuring tile flooring, baseboard molding, flush mount light fixture, freshly painted neutral white, two double door closets

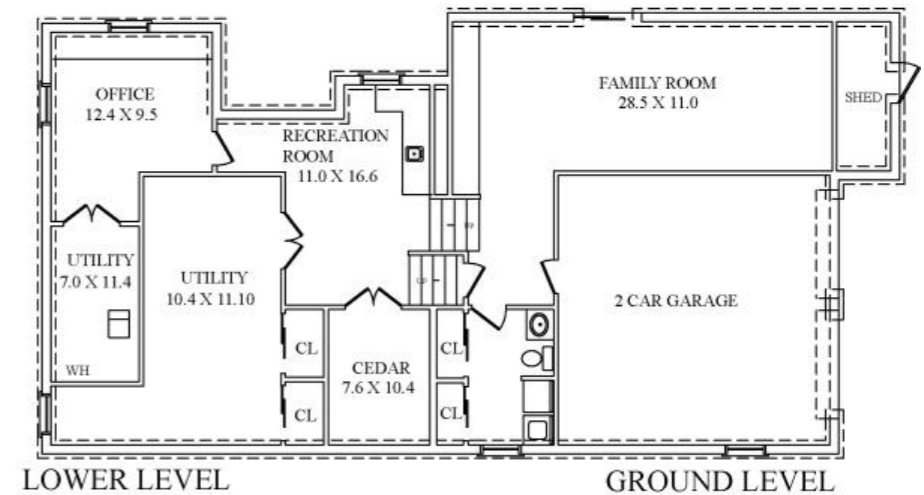
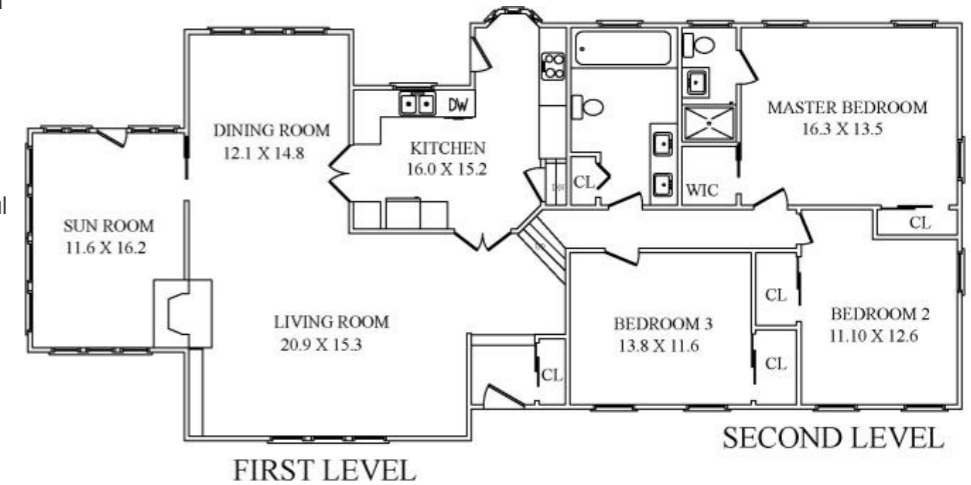
BACKYARD

- Fully fenced in flat backyard
- Private and Lush landscaping
- Circular Bluestone Patio with grilling and seating area

ADDITIONAL FEATURES & UPGRADES

- Attached two-car garage with hanging and room for storage, automatic garage door openers.
- Alarm
- Beautifully renovated (2017)
- Freshly painted throughout (2018)
- Hardwood floors stained (2018)

THE FLOORPLANS



sueadler 
 THE #1 KELLER WILLIAMS TEAM IN NEW JERSEY **team**

CELL: 973.936.9129
 OFFICE: 973.376.0033 x101
 admin@sueadler.com
 sueadler.com/28stoneridge