

# 3 Undercliff Terrace | West Orange



**sueadler**   
THE #1 KELLER WILLIAMS TEAM IN NEW JERSEY team

**kw** PREMIER  
PROPERTIES  
KELLERWILLIAMS.

Each Keller Williams office is individually owned and operated.





Designed for modern living, this meticulous 4 Bedroom, 3½ Bathroom home is perfect for entertaining and family gatherings. Offered in absolute move-in condition, this home features stunning upgrades, an open floor plan and large windows throughout that allow for natural light and a bright and airy feel. Evening views of the Manhattan skyline and the convenience of being located minutes from school and public transportation make 3 Undercliff Terrace a true find.

Blue stone steps lead you to the front door patio landing, where you'll enter through an Art Deco door into a Foyer illuminated by natural light. The main floor boasts spacious sun drenched rooms that are perfect for grand entertaining or intimate family gatherings. With its wood burning fireplace, the Living Room flows seamlessly to the Dining Room, adorned with custom design molding and wainscoting. To the right of the Foyer is a magnificent, more casual, Family Room with walls of windows that look out to the back, front and side yards. The Kitchen is ideally positioned to flow nicely into both the Family Room and Dining Room, featuring an eat-in area and lovely windows overlooking the back yard and patio. A renovated Powder Room with Carrera marble flooring completes the First Level.







Upstairs, you'll find the Master Suite, where from the comfort of your own bed you can gaze out at the Manhattan skyline. Replete with his and her walk-in closets and a spa-like Master Bathroom with Italian-designed detail, gorgeous area views provide the perfect backdrop. Bedrooms 2, 3 and 4 are incredibly generous in size and share a Hall Full Bathroom that is decorated with Italian tile and includes a jacuzzi tub. Gleaming hardwood floors throughout.

The Lower Level is spacious and includes a Recreation Room, Full Bathroom and Laundry Room in addition to offering ample storage and new flooring. A bonus Guest Bedroom/Office is just off the Recreation Room is ideal for an Au Pair or private study. From the Lower Level, you can access the Two-Car Garage where you will find extra storage area and shelving. New HVAC, Furnace, Windows, Doors and custom window treatments are just some of the many wonderful updates!

Just steps away from a NJ Transit bus line, Jitney service to the NJ Transit South Orange Train Station, West Orange's elementary and Middle Schools, 3 Undercliff Terrace checks all of the boxes.





# INSIDE & OUT



CELL: 973.936.9129  
 OFFICE: 973.376.0033 x101  
 EMAIL: info@sueadler.com  
 sueadler.com/3undercliff

## THE FLOORPLAN

### FIRST LEVEL

- Entry Foyer featuring stone tile flooring, art deco solid wood front door, baseboard molding, walk in Coat Closet with shelving, 2 designer flush mount lighting fixtures, leading into Living Room, Family Room, Powder Room and Hallway.
- Powder Room featuring marble floor, crown and baseboard molding, wood custom vanity with storage and onyx glass sink, designer flush mount light fixture and Kohler toilet.
- Living Room featuring hardwood flooring, wood-burning fireplace with custom millwork mantle with dental detail and brick, baseboard molding, large bay window with custom fabric valance and Hunter Douglas vertical fabric blinds.
- Family Room featuring new designer carpeting, baseboard and crown molding, recessed lighting, built in surround sound speakers, 4 large floor to ceiling picture windows at 3 exposures with custom fabric drapes, sliding double french doors overlooking patio, open to back Hallway.
- Hallway with stone tile, flush mounted light fixture, exterior door to patio, door to Lower Level and utility closet with shelving leading to Kitchen and Dining Room.
- Kitchen with breakfast area featuring stone floor, decorative flush mount light fixture, designer pendant light fixture, 2 large windows at 2 exposures, pantry with shelving, Corian countertop, LG stainless top/bottom refrigerator, stainless double sink with pull down faucet and filtered water spout, white GE Profile 4 gas burner stove with Samsung microwave range and Sears dishwasher.
- Dining Room featuring hardwood flooring, 3 side by side windows and large Bay window at 2 exposures with custom fabric Hunter Douglas blinds, baseboard and crown molding, custom solid wood wainscoting and large vintage glass chandelier.

### SECOND LEVEL

- Second Floor landing featuring hardwood flooring, 2 decorative light fixtures, large Linen Closet with shelving, baseboard molding and window with shade.
- Master Bedroom Suite featuring hardwood flooring, His and Her walk-in closets with custom shelving, baseboard molding, 6 windows at 2 exposures with custom fabric valance and blinds leading to En suite Bathroom featuring tile flooring, recessed lighting, custom wood vanity with storage and medicine cabinet, Kohler toilet and sink, custom Linen Closet, frameless glass door shower with decorative Italian tile surround, shower light, custom shower bench, rain shower head, & 4 surround water sprays.
- Bedroom #2 featuring hardwood flooring, 2 windows at 2 exposures with custom fabric shades, ceiling fan with light, closet with shelving and baseboard molding.

- Full Hall Bathroom featuring tile flooring, American Standard sink and toilet, large custom wood vanity with storage, recessed lighting, window with blinds, Jacuzzi tub with shower and Italian decorative tile surround, freshly painted.
- Bedroom # 3 featuring hardwood flooring, flush light fixture, 2 windows with blinds at 2 exposures, closet with shelving, freshly painted.
- Bedroom #4 featuring hardwood flooring, recessed lights, 3 windows at 2 exposures, baseboard molding and built in window seat.

### LOWER LEVEL

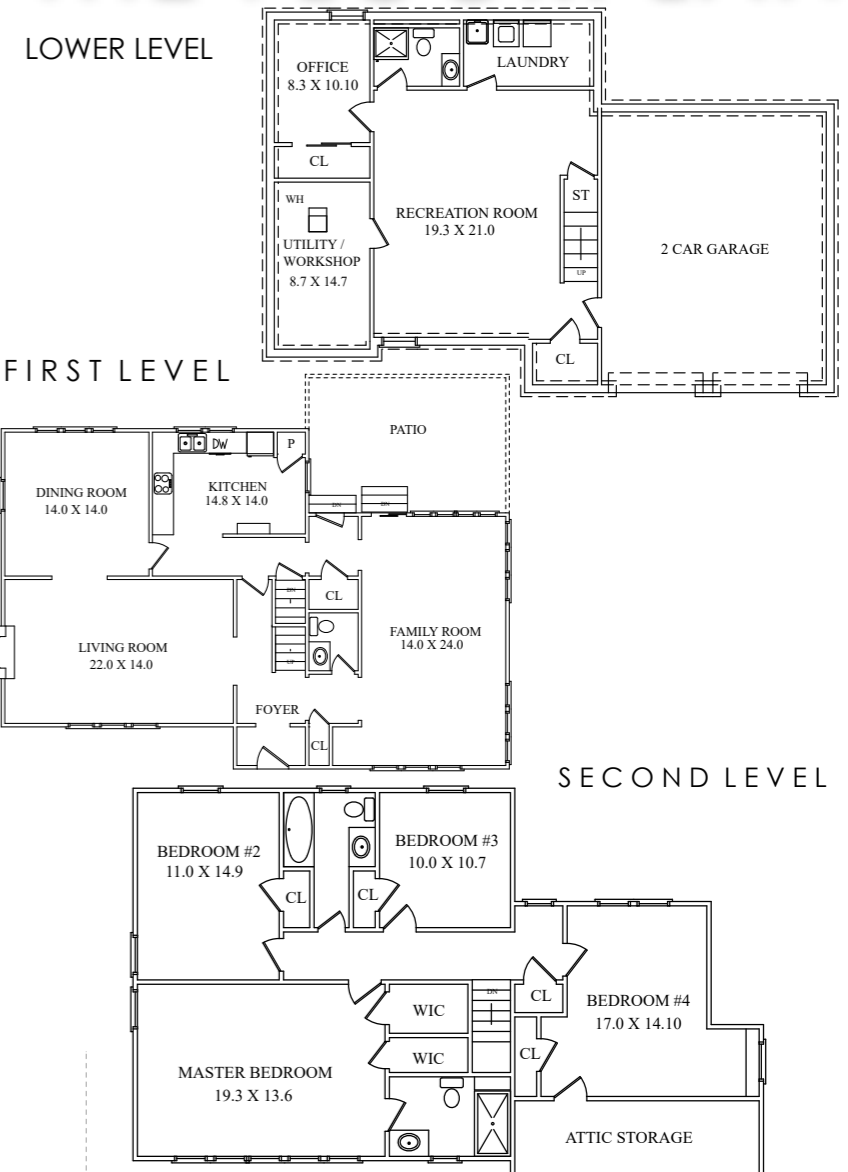
- Stairway with hardwood risers leading to Recreation/Play Room featuring vinyl plank flooring, commercial lighting, 2 closets with shelving, window with blinds leading to Laundry Room, Full Bathroom, Bedroom/Office, Utility Room and two-car Garage (freshly painted and sealed) with electric doors, & shelving.
- Laundry Room with Kenmore Front Load washer and top load dryer, vinyl floor, commercial lighting, utility sink and shelving.
- Full Bathroom featuring tile floor, recessed lighting, American Standard toilet and sink, wood vanity with storage and shower with lighting.
- Office/Bedroom #5 featuring faux wood vinyl flooring, double sliding door closet with shelving, 2 windows with blinds at 2 exposures and baseboard molding.
- Utility Room with shelving, pegboard wall, work bench, commercial lighting and vinyl plank flooring.

### BACKYARD

- Blue Stone pathway and front entryway with wrought-iron railing
- Brick terraced retaining walls (upgraded 2016)
- Professionally landscaped with blooming perennials
- Gas line to Patio
- Side Ramp to Back Yard

### ADDITIONAL FEATURES & UPGRADES

- Refinished hardwood flooring (2019)
- Garage painted and sealed (2018)
- Updated Lower Level and new insulation (2017)
- Attic storage insulation and freshly painted (2016)
- New Heating and Cooling System (2014)
- New Water Heater (2014)
- Renovated Family Room/Bathrooms – Use of architectural plans (2006)
- New Anderson Windows/Doors (2004)
- Family Room surround sound speakers
- House security system



All information deemed reliable but not guaranteed